



Three different shades of red.  
BLOOD CENTER

F A A 3

Name: **Regional Blood Center in Racibórz**

Category: **healthcare, blood center**

Subcategory: **new construction, refurbishment and extension**

address: **3 Sienkiewicza St, 47-400 Racibórz, Poland**

net area: **2,771.0 m<sup>2</sup>**

volume: **11,800.0 m<sup>3</sup>**

Design: **2007-2010**

Construction: **2008-2013**

Commission: **1 place in national competition**

Architecture and coordination: **FAAB Architektura Adam Biało-brzeski | Adam Figurski**  
**11/8 Stoczkowska St, Warsaw, Poland | [www.faab.pl](http://www.faab.pl)**

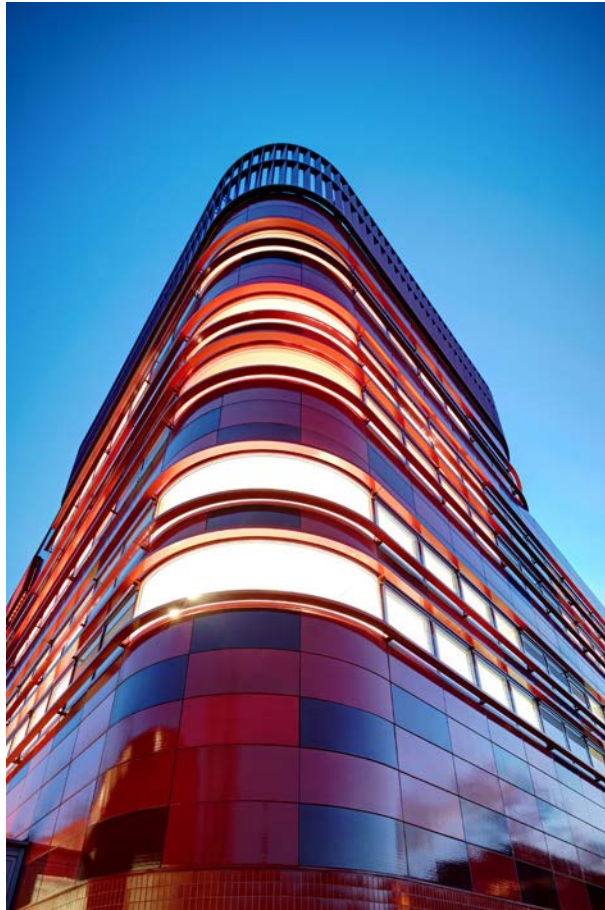
Architects: **Adam Biało-brzeski, Adam Figurski, Maria Messina** collaborators: **Weronika Libiszowska, Emilia Rusińska**

Structure: **Kappa-Projekt**

Contractor: **Skobud Sp. z o.o.**

Photography: **Bartłomiej Senkowski**





**FAAB** Architektura Białobrzegi | Figurski  
11/8 Stoczkowska St, Warsaw 04-147 Poland  
tel +48 22 740 2000 fax + 48 22 740 2001  
[faab@faab.pl](mailto:faab@faab.pl) [www.faab.pl](http://www.faab.pl) date: 07 2014

© all rights reserved 2014

### Location.

The building's location is supervised by the Provincial Heritage Monuments Protection Office.

### Investment.

Investment divided into three phases, including (1) construction of the new Regional Blood Center building, (2) shelter for the mobile blood center [bus] and (3) the first in Poland specialized Center for Blood Cancer Diagnostics to be located within the existing building. At the moment, the first phase has been completed.

The first phase building houses modern cool rooms and storages, blood collecting unit, a complex of advanced medical laboratories and blood radiation laboratory, offices and conference center. Within the building blood is being collected, tested, processed to divide into blood elements and purified with the technology based on radioactive materials.

### Elevation & Color.

The building elevation is finished with ceramics, including small ceramic tiles on the ground level and glazed ceramic panels on the upper floor levels. The upper levels consist of more than 2000 ceramic elements. Among them 50x100cm flat panels, vertical blinds and (for the first time in Poland) curved panels of 145cm and 195 cm radius. Three different shades of red were implemented to create irregularity on the surface of the all four elevations. These shades symbolize the variation of color in blood. The color of blood, oxygenated in the lungs and flowing in the arteries, is bright red, while blood flowing in the veins, containing carbon dioxide, is dark red.

Ceramic pipes (TERRART®-BAGUETTE), placed at the uppermost level, protect the conference room from overheating as well as hide complicated and massive technological systems located at the roof level. These ceramic pipes add detail and make the enclosure lighter in its appearance.

The color scheme, the irregularity of the elevation leitmotif and the panel's glossiness represent the richness of blood, often described as the gift of life. The geometry is inspired by the function of the blood center, the clash of biology with technology. Rounded elements represent biology, straight represent technology.

The intentional vivid color scheme of the elevation, making the building visually surprising to the public, calls attention to the idea of the blood donation. Application of the glazed panels is inspired by the local Silesian building tradition, which is present in the historical building facades with the glazed bricks.

### Interior.

The interior design is based on the colors used in the context of the facade. The stairwell placed in the building's center, lit with the aid of natural sunlight, is finished with red ceramic tiles along the corridor.

Red color is present on floors and walls as an accent.

Most rooms are lit by two belts of windows. The lower window belt illuminates laboratory worktops placed along the outer walls while the upper belt, just below the ceiling, allows the infiltration of natural light to the remotest parts of the rooms. Thanks to glazed internal walls, the corridors are also lit with natural sunlight.


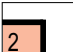


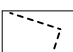





**FAAB** Architektura Białobrzegi | Figurski  
11/8 Stoczkowska St, Warsaw 04-147 Poland  
tel +48 22 740 2000 fax + 48 22 740 2001  
[faab@faab.pl](mailto:faab@faab.pl) [www.faab.pl](http://www.faab.pl) date: 07 2014

© all rights reserved 2014

SITE PLAN / MAPA SYTUACYJNA 1:3000

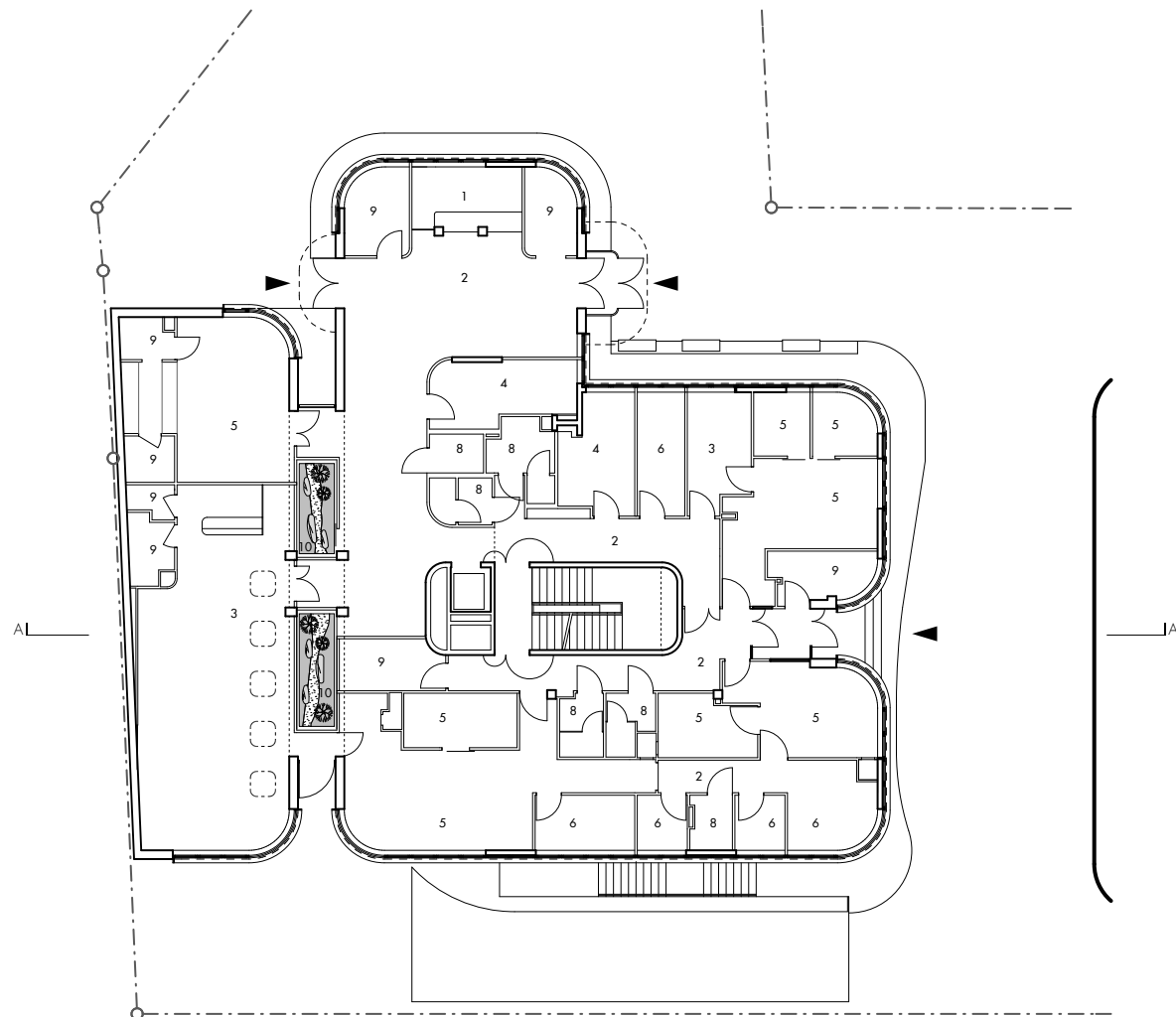
- 
new building  
nowy budynek
- 
shelter for mobile blood center (bus)  
garaż na ambulans do pobierania krwi (autobus)
- 
existing building to be remodeled  
budynek istniejący do przebudowy
- 
site boundary  
granice działki
- 
substructure outline  
obrys piwnicy
- 
existing surrounding buildings  
istniejące budynki





GROUND LEVEL / RZUT PARTERU 1:300

- 1 reception - rejestracja
- 2 hallway - hol wewnętrzny
- 3 blood donation - sala pobrań
- 4 medical office - gabinet medyczne
- 5 medical laboratory - laboratoria medyczne
- 6 office - pokój biurowy
- 7 conference - sala konferencyjna
- 8 toilet - toaleta
- 9 auxiliary room - pokój obsługi
- 10 winter garden - ogród zimowy
- 11 terrace - taras







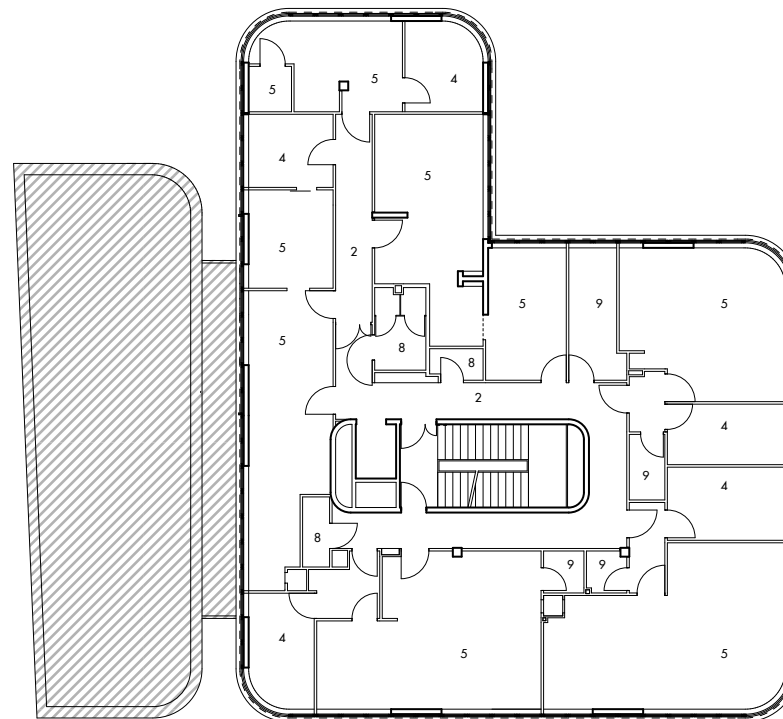
**FAAB** Architektura Białobrzegi | Figurski  
11/8 Stoczkowska St, Warsaw 04-147 Poland  
tel +48 22 740 2000 fax + 48 22 740 2001  
[faab@faab.pl](mailto:faab@faab.pl) [www.faab.pl](http://www.faab.pl) date: 07 2014

© all rights reserved 2014

LEVEL +1 / RZUT PIĘTRO +1 1:300

- 1 reception - rejestracja
- 2 hallway - hol wewnętrzny
- 3 blood donation - sala pobrań
- 4 medical office - gabinet medyczne
- 5 medical laboratory - laboratoria medyczne
- 6 office - pokój biurowy
- 7 conference - sala konferencyjna
- 8 toilet - toaleta
- 9 auxiliary room - pokój obsługi
- 10 winter garden - ogród zimowy
- 11 terrace - taras

AI



JA





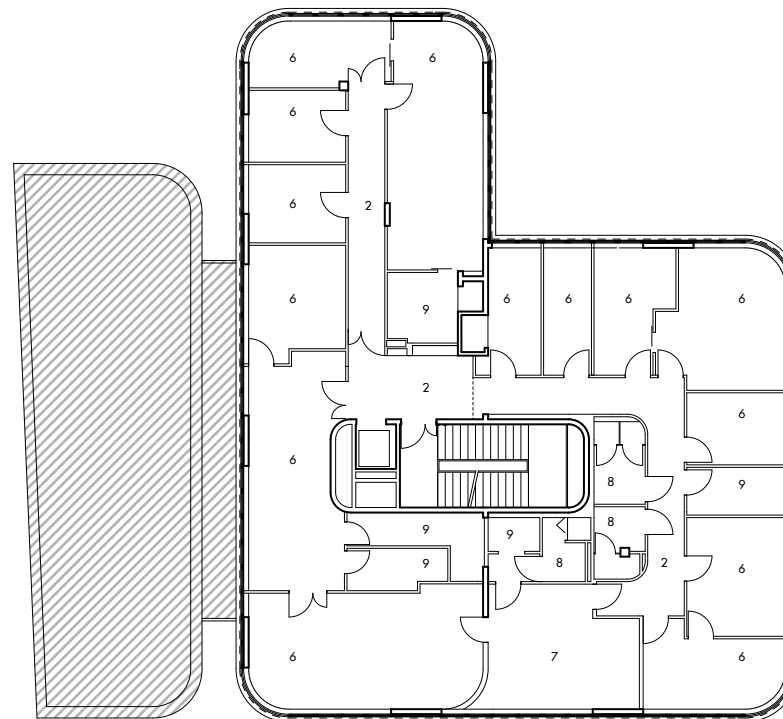
**FAAB** Architektura Białobrzegi | Figurski  
11/8 Stoczkowska St, Warsaw 04-147 Poland  
tel +48 22 740 2000 fax + 48 22 740 2001  
[faab@faab.pl](mailto:faab@faab.pl) [www.faab.pl](http://www.faab.pl) date: 07 2014

© all rights reserved 2014

LEVEL +2 / RZUT PIĘTRO +2 1:300

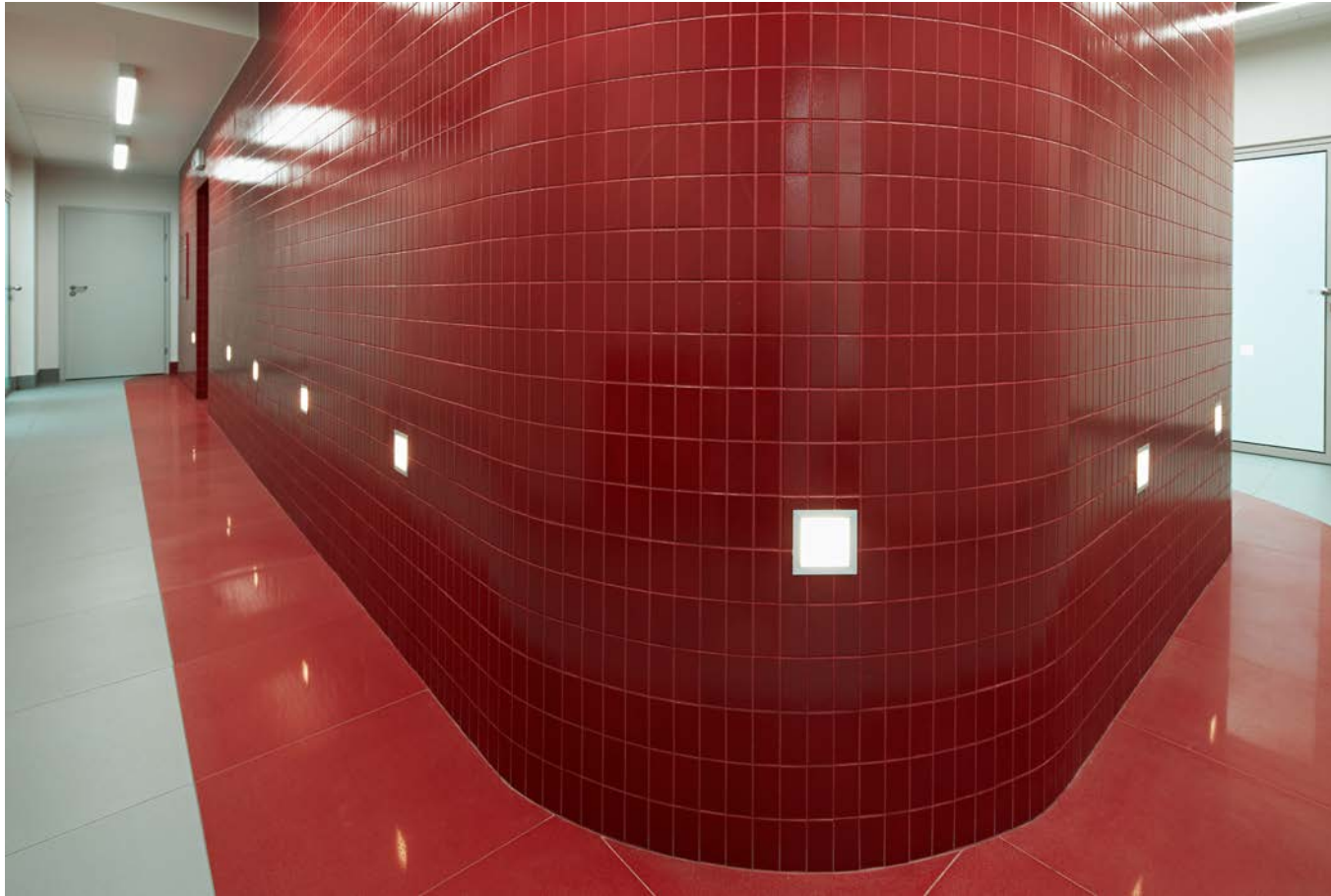
- 1 reception - rejestracja
- 2 hallway - hol wewnętrzny
- 3 blood donation - sala pobrań
- 4 medical office - gabinet medyczne
- 5 medical laboratory - laboratoria medyczne
- 6 office - pokój biurowy
- 7 conference - sala konferencyjna
- 8 toilet - toaleta
- 9 auxiliary room - pokój obsługi
- 10 winter garden - ogród zimowy
- 11 terrace - taras

AI



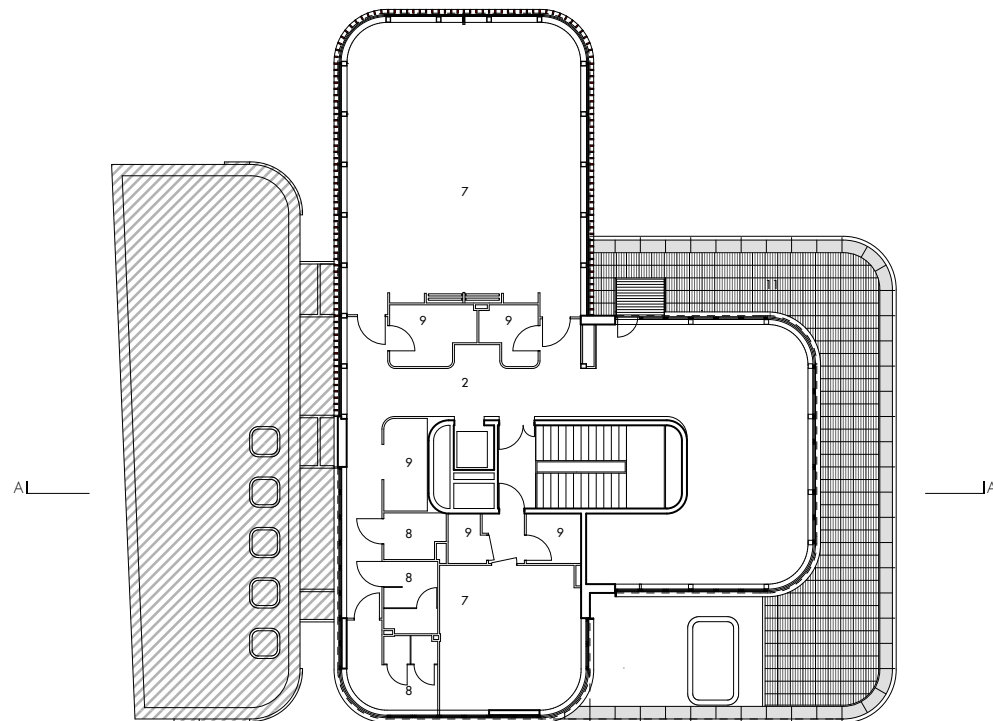
JA





LEVEL +3 / RZUT PIĘTRO +3 1:300

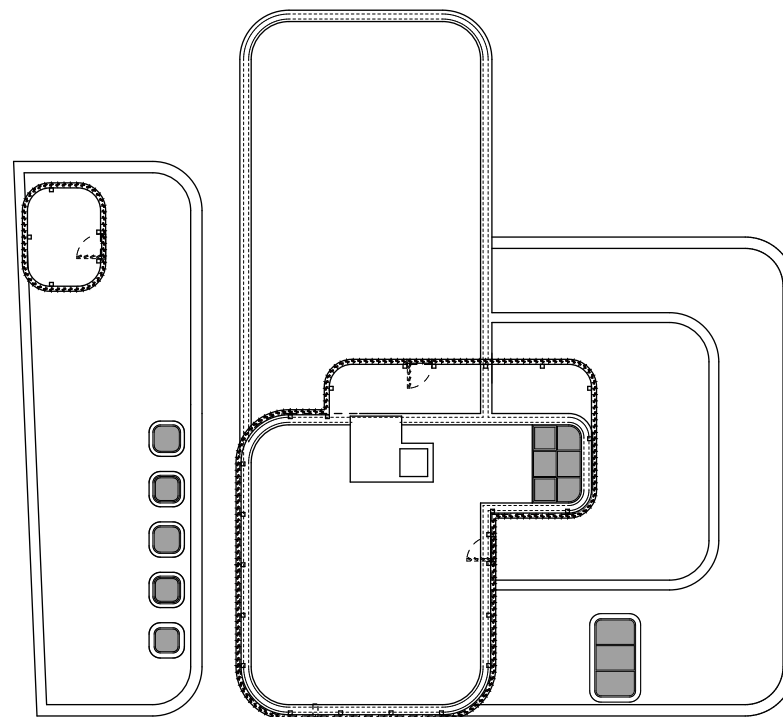
- 1 reception - rejestracja
- 2 hallway - hol wewnętrzny
- 3 blood donation - sala pobrań
- 4 medical office - gabinet medyczne
- 5 medical laboratory - laboratoria medyczne
- 6 office - pokój biurowy
- 7 conference - sala konferencyjna
- 8 toilet - toaleta
- 9 auxiliary room - pokój obsługi
- 10 winter garden - ogród zimowy
- 11 terrace - taras





LEVEL ROOF / RZUT DACHU 1:300

AI



JA

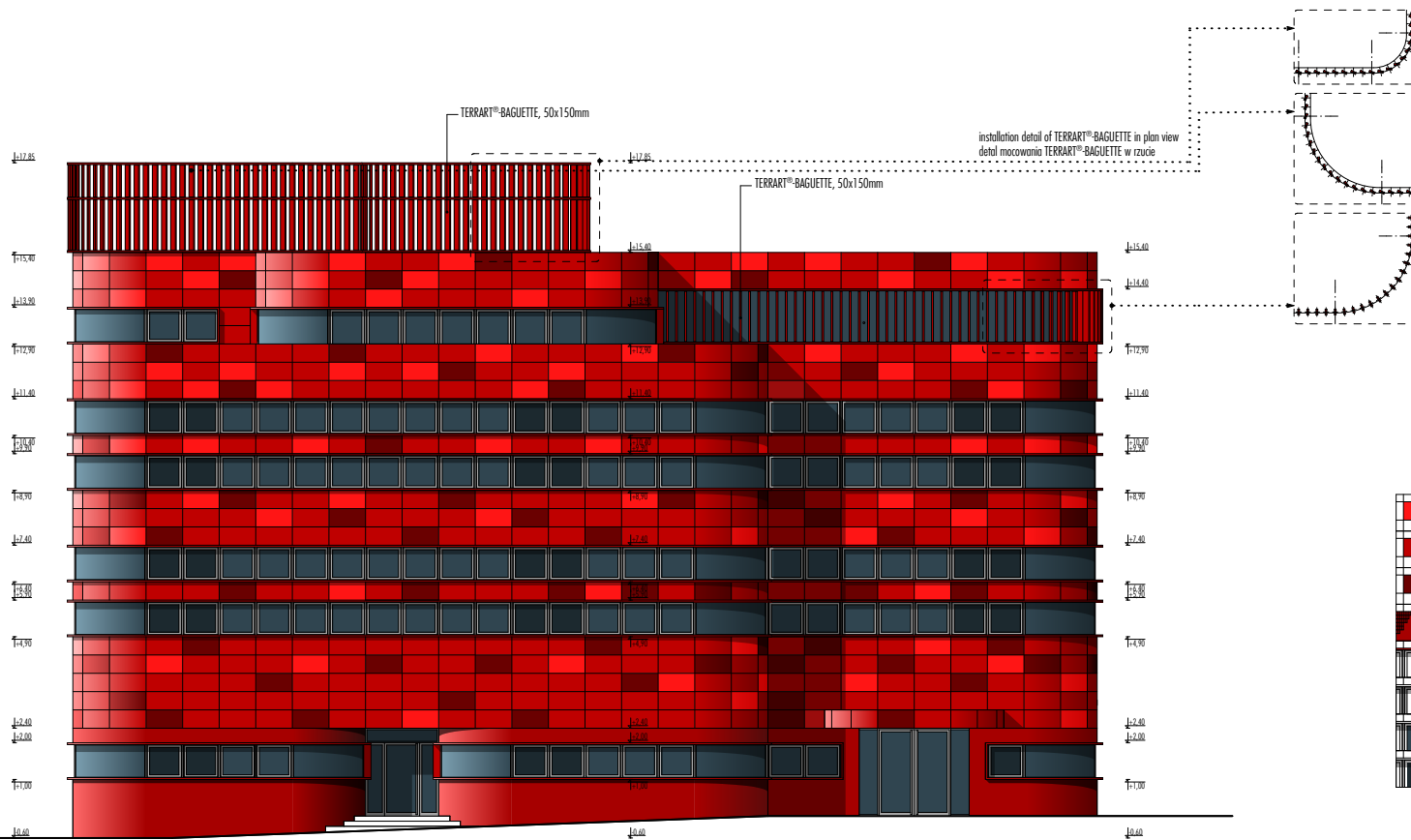




**FAAB** Architektura Białobrzegi | Figurski  
11/8 Stoczkowska St, Warsaw 04-147 Poland  
tel +48 22 740 2000 fax + 48 22 740 2001  
[faab@faab.pl](mailto:faab@faab.pl) [www.faab.pl](http://www.faab.pl) date: 07 2014

© all rights reserved 2014

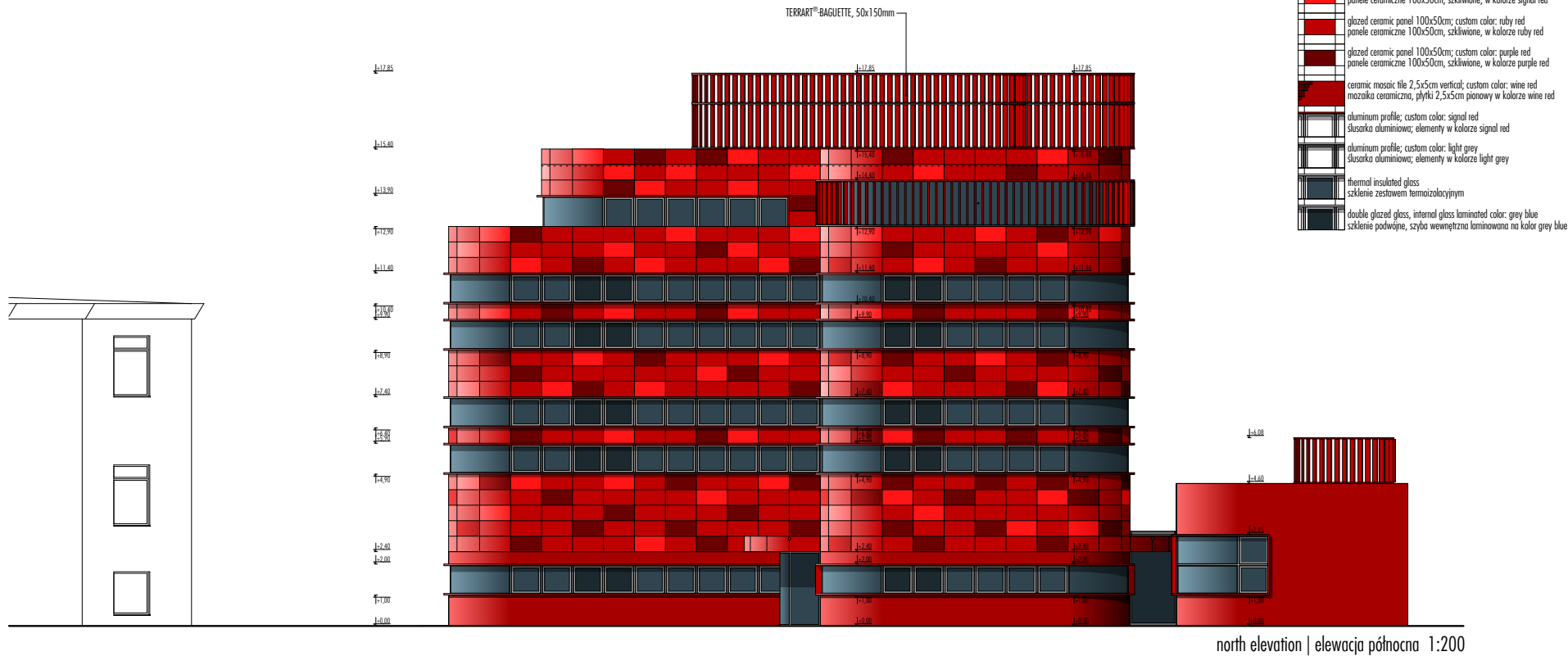


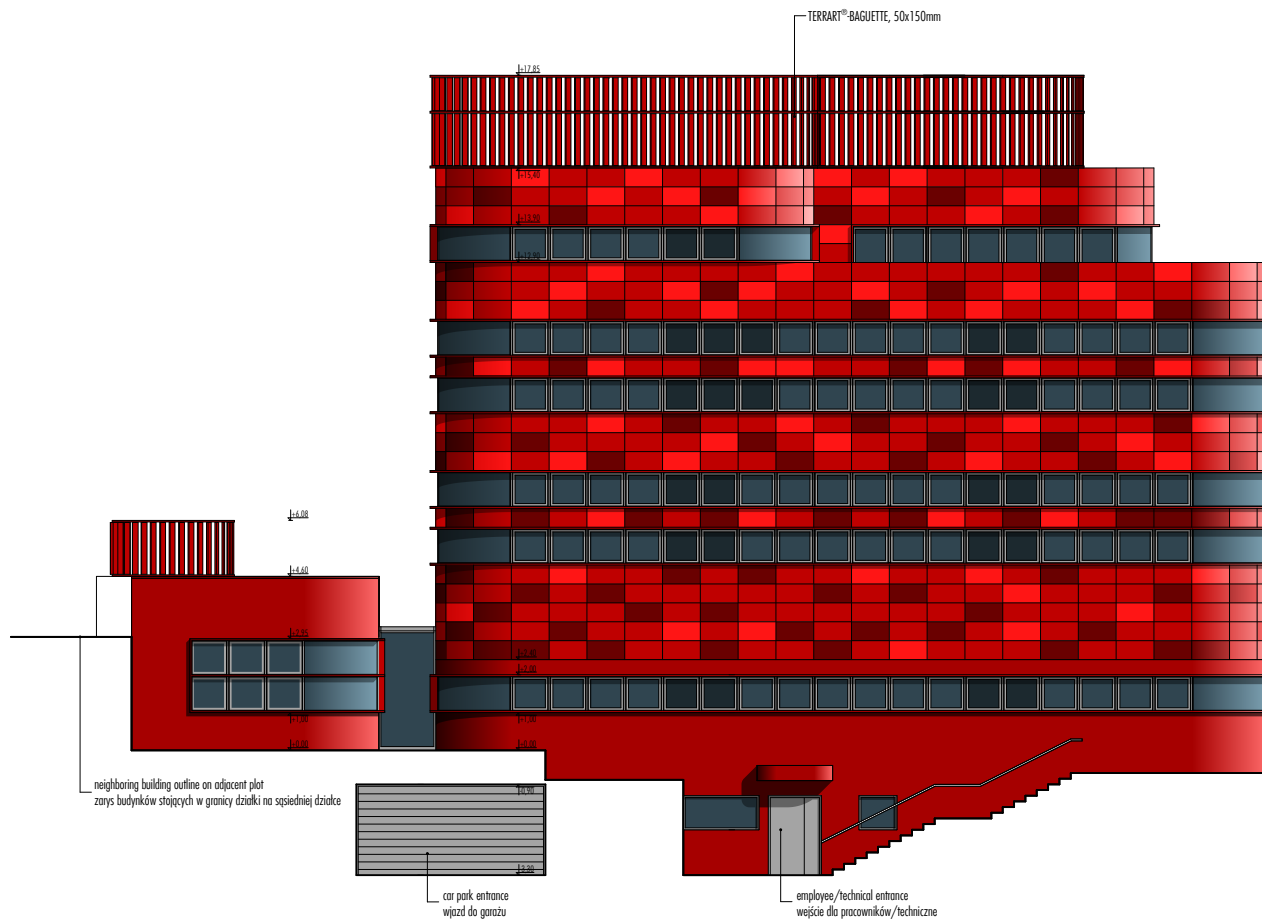




















-  glazed ceramic panel 100x50cm; custom color: signal red  
panele ceramiczne 100x50cm, szkliwone, w kolorze signal red
-  glazed ceramic panel 100x50cm; custom color: ruby red  
panele ceramiczne 100x50cm, szkliwone, w kolorze ruby red
-  glazed ceramic panel 100x50cm; custom color: purple red  
panele ceramiczne 100x50cm, szkliwone, w kolorze purple red
-  ceramic mosaic tile 2,5x5cm vertical; custom color: wine red  
mozaika ceramiczna, plytki 2,5x5cm pionowy w kolorze wine red
-  aluminum profile; custom color: signal red  
slusarka aluminiowa; elementy w kolorze signal red
-  aluminum profile; custom color: light grey  
slusarka aluminiowa; elementy w kolorze light grey
-  thermal insulated glass  
szklenie zestawem termoizolacyjnym
-  double glazed glass, internal glass laminated color: grey blue  
szklenie podwójne, szyba wewnętrzna laminowana na kolor grey blue

east elevation | elewacja wschodnia 1:200

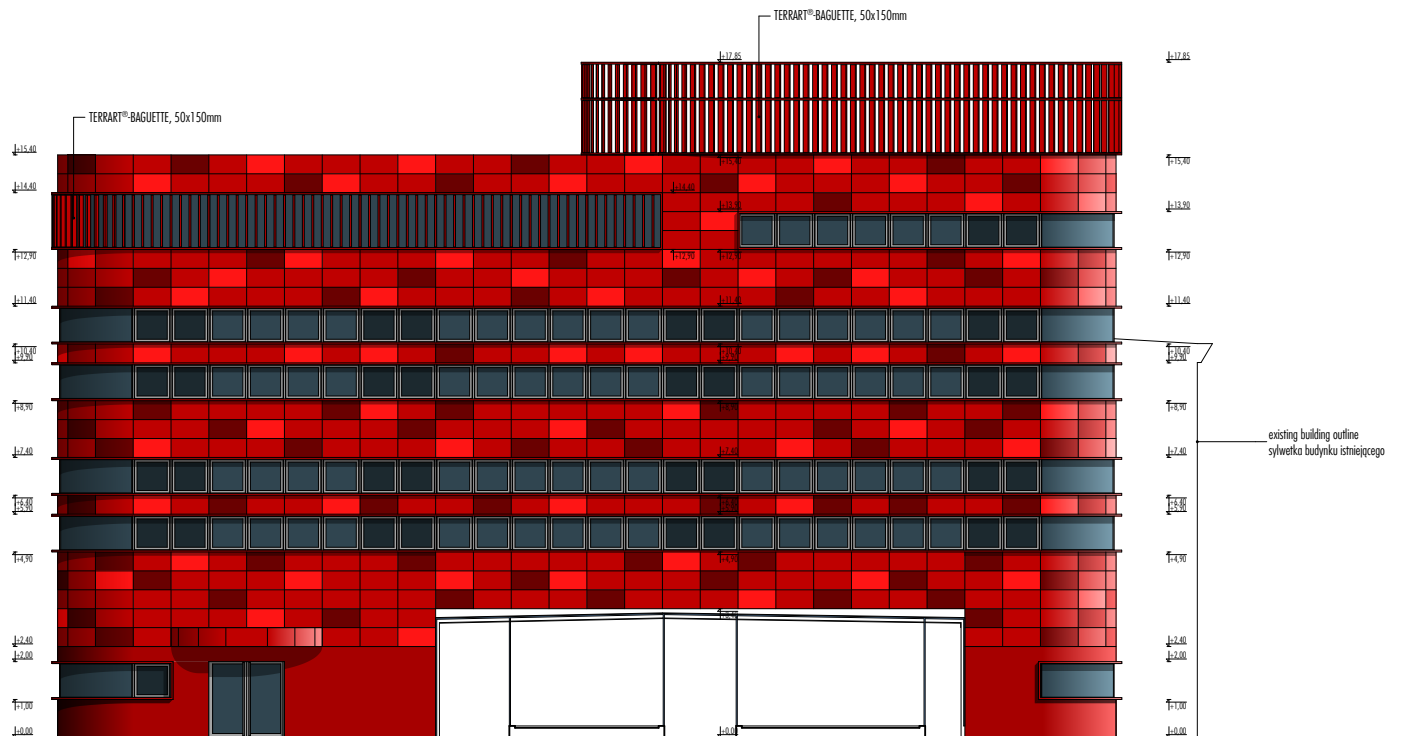


















-  glazed ceramic panel 100x50cm; custom color: signal red
-  panele ceramiczne 100x50cm, szkliwone, w kolorze signal red
-  glazed ceramic panel 100x50cm; custom color: ruby red
-  panele ceramiczne 100x50cm, szkliwone, w kolorze ruby red
-  glazed ceramic panel 100x50cm; custom color: purple red
-  panele ceramiczne 100x50cm, szkliwone, w kolorze purple red
-  ceramic mosaic tile 2,5x5cm vertical; custom color: wine red
-  mozaika ceramiczna, płytki 2,5x5cm pionowy w kolorze wine red
-  aluminum profile; custom color: signal red
-  słusarka aluminiowa; elementy w kolorze signal red
-  aluminum profile; custom color: light grey
-  słusarka aluminiowa; elementy w kolorze light grey
-  thermal insulated glass
-  szklenie zestawem termozalocynym
-  double glazed glass, internal glass laminated color: grey blue
-  szklenie podwójne, szyba wewnętrzna laminowana na kolor grey blue

south elevation | elewacja południowa 1:200

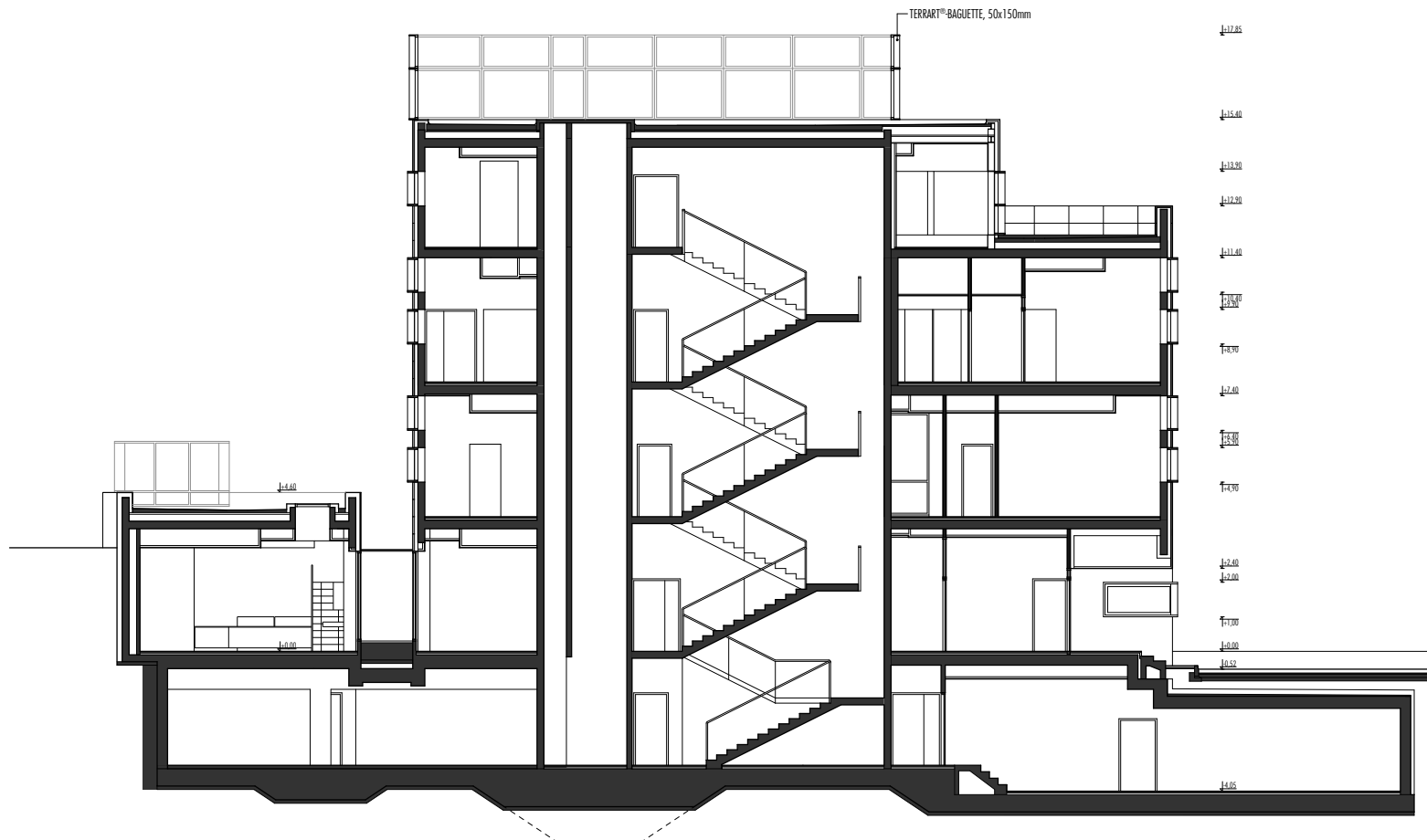




west elevation | elewacja zachodnia 1:200

-  glazed ceramic panel 100x50cm; custom color: signal red
-  panele ceramiczne 100x50cm, szkliwone, w kolorze signal red
-  panele ceramiczne 100x50cm, szkliwone, w kolorze ruby red
-  glazed ceramic panel 100x50cm; custom color: purple red
-  panele ceramiczne 100x50cm, szkliwone, w kolorze purple red
-  ceramic mosaic tile 2,5x5cm vertical; custom color: wine red
-  mozaika ceramiczna, płytki 2,5x5cm pionowy w kolorze wine red
-  aluminum profile; custom color: signal red
-  słusarka aluminiowa; elementy w kolorze signal red
-  aluminum profile; custom color: light grey
-  słusarka aluminiowa; elementy w kolorze light grey
-  thermal insulated glass
-  szklenie zestawem termoizolacyjnym
-  double glazed glass, internal glass laminated color: grey blue
-  szklenie podwójne, szyba wewnętrzna laminowana na kolor grey blue





section a-a | przekrój a-a 1:200



**FAAB** Architektura Białobrzegi | Figurski  
 11/8 Stoczkowska St, Warsaw 04-147 Poland  
 tel +48 22 740 2000 fax + 48 22 740 2001  
 faab@faab.pl www.faab.pl date: 07 2014

© all rights reserved 2014



