

NOVEMBER - 2023 DOSSIER DE PRESSE



School Group

Geneviève-de-Gaulle-Anthonioz

L'Haÿ-les-Roses


Atelier
Aconcept



NOVEMBER - 2023 DOSSIER DE PRESSE

School Group
Geneviève-de-Gaulle-Anthonioz
L'Haÿ-les-Roses



DATA SHEET

Client : Eiffage Aménagement

Type : New construction

Localisation : Zac Paul Hochart, Hay-les-Roses (Greater Paris)

Mission : Project management for design, execution and OPC, signage and furniture

Team : Atelier Aconcept (architects), Betem (structure, roofing), EPDC (fluids), IETI (HQE), Art Acoustique (acoustician), ON (lighting), Landact (landscaping)

Specification : Constrained site in the heart of the city, 2-storey courtyard, Design Build Operate Maintain (DBOM), car park design

- > 10 nursery classes
 - > 15 elementary classes
 - > 1 gymnasium, 1 dojo
 - > Basement parking 50 spaces
-

Value of works :
20,15€M

Delivered :
in September 2023

Environmental :
HQE objective Level E3C2 of the E C- label (RT2012-20% equivalent)



West façade

0 5 10







School Group

Geneviève-de-Gaulle-Anthonioz

In Haÿ-les-Roses (Greater Paris), a circular movement for a school complex designed by Atelier Aconcept

Atelier Aconcept delivered the Geneviève-de-Gaulle-Anthonioz School Group in Haÿ-les-Roses (Greater Paris) in September 2023. Groupe Scolaire Geneviève-de-Gaulle-Anthonioz, a programme comprising ten nursery classes, fifteen elementary classes, a dojo and a gymnasium, with a total floor area of 4,700 m².

The new Geneviève-de-Gaulle-Anthonioz school complex is an urban landmark and a landmark building with a sober, contemporary architectural style, providing the municipality of Haÿ-les-Roses with a dynamic gateway to the town.

At the heart of an urban redevelopment programme, the facility is developed in a circular pattern. The extension of the ground floor terrace, in harmony with the curves of the building, provides a high-level recreational area and a natural separation between the elementary and nursery schools.

The interplay of these rounded shapes has made it possible to create areas of roofing with light vegetation, offering local residents an attractive view of this fifth facade.

To create two contrasting atmospheres between inside and outside, two-tone matt and reflective metal cladding punctuates the streets bordering the project, while inside, a concrete finish gives privacy to the spaces.

The building has a green roof and a rainwater recovery system, low-energy lighting and communal heating, all of which are sustainable and perfectly controlled environmental solutions.

A 50-space underground car park completes the scheme.

L'HAÿ-LES-ROSES

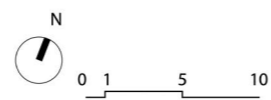
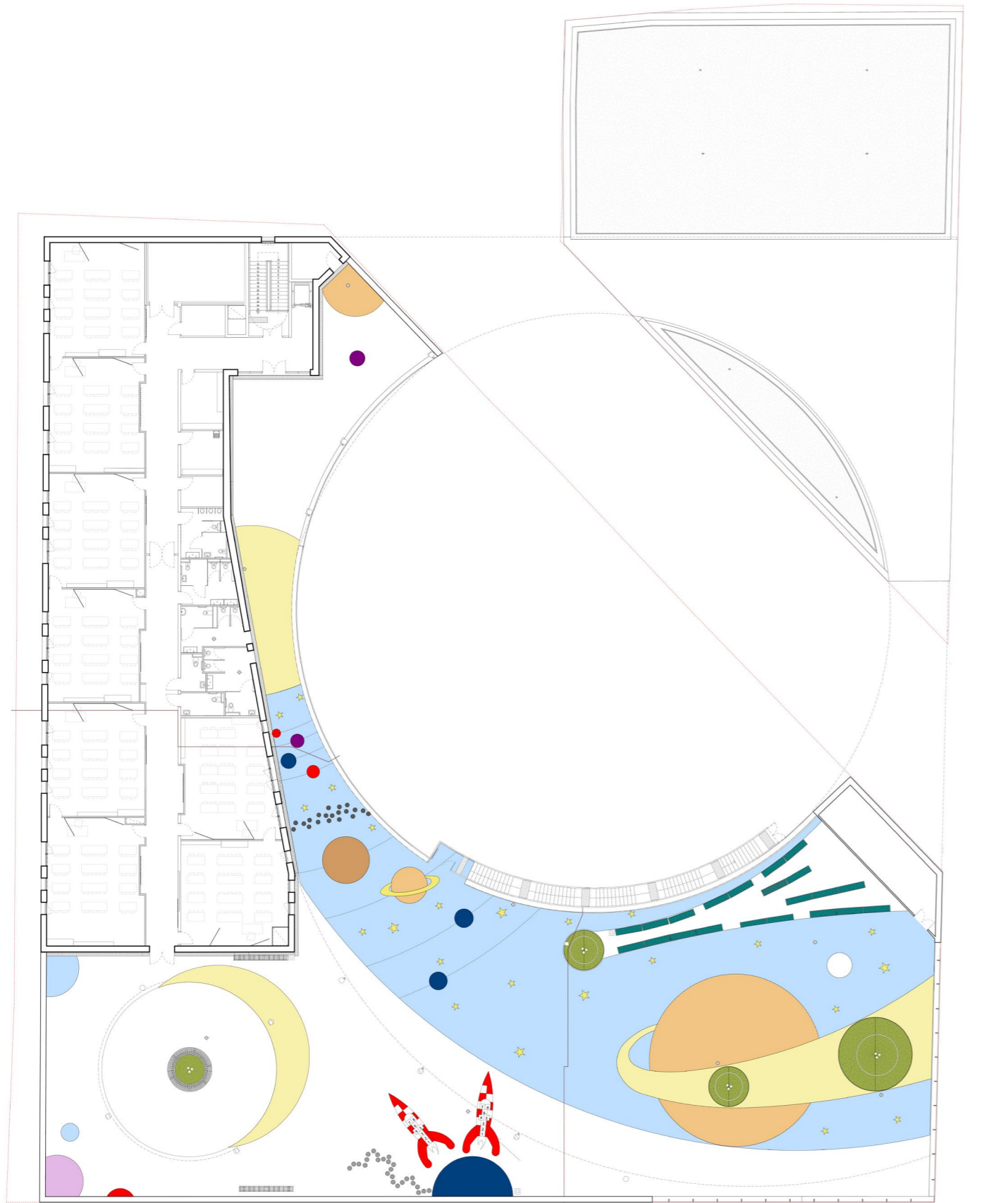


PLAYGROUNDS





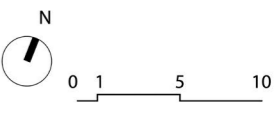
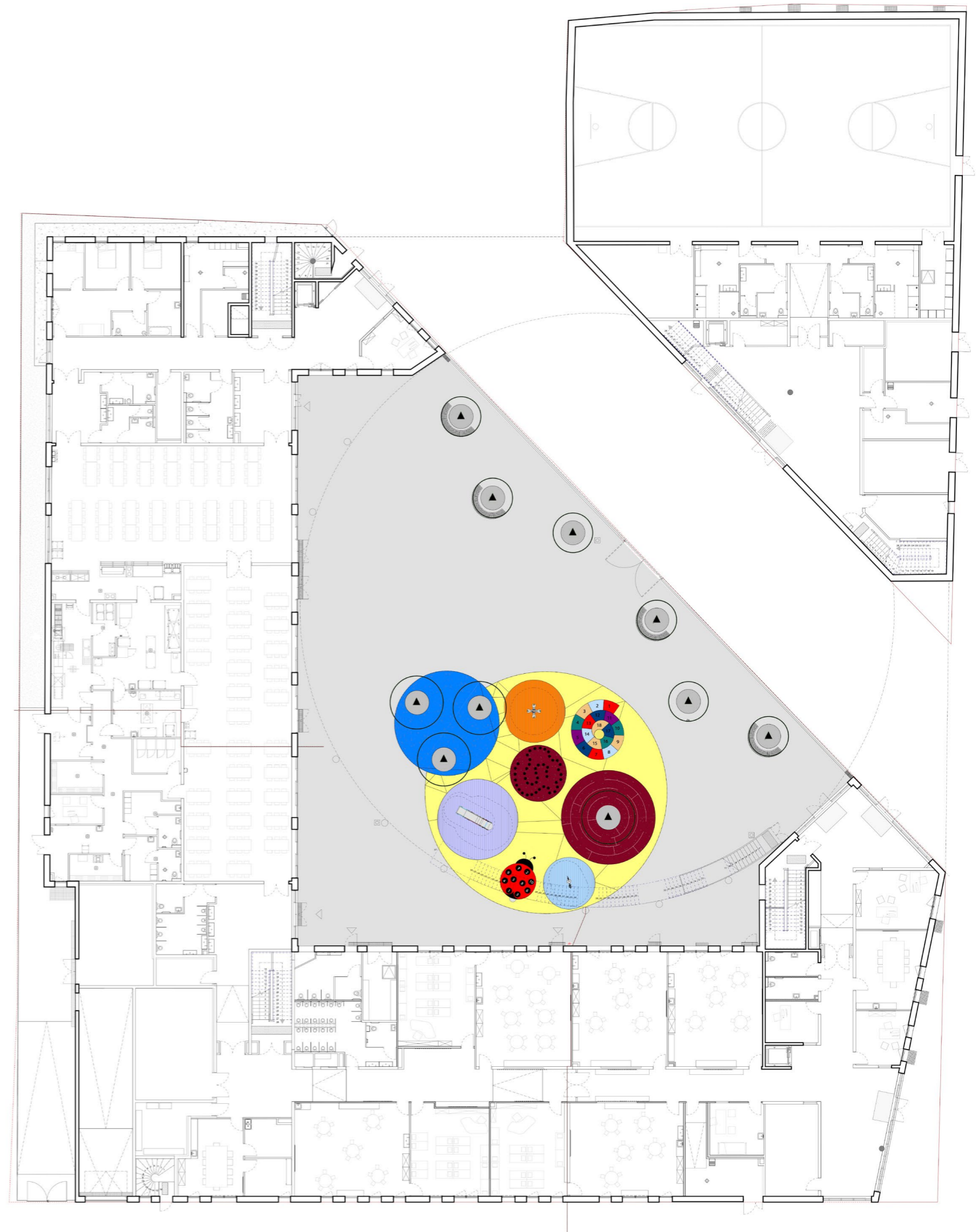
Ground floor plan



DISIRS



Floor plan R+1



INTERIORS









L'ATELIER ACONCEPT



Frédéric Quevillon and Aurélien Tessier, Atelier Aconcept associates

Founded in 2001, Atelier Aconcept is a contemporary architectural practice.

In our opinion, contemporary architectural research must respond to an economic and rational need. and rational. Although function takes precedence over form, this focus on efficiency would be meaningless if it were not followed by a rethinking of the design. if it were not followed by a constant questioning of the project from a formal point of view. After all, aesthetic contact is our primary relationship with the building. Naturally, the thinking that goes into the various design phases is part of a strong and responsible environmental approach.

The agency is a place for exchanging and sharing knowledge. It emphasises the importance of dialogue between the various players involved in a project, of course, but also between the staff within the agency, who are all specialists in a particular field (urban planning, architecture, design, economics, scenography, etc.), in order to open up the fields of creation.

Architecture aims to create a reciprocal relationship between the project, the user (man) and the context, so that these three elements are inseparable and communicative. Architecture is the relationship between Man and his context between the project, the user (Man) and the context, so that these three elements are inseparable and communicative.

To follow news from the office:





ARCHITECTS

Atelier Aconcept
14 rue Père André Jarlan
91000 Évry-Courcouronnes
T : +33 1 69 36 07 65
contact@atelieraconcept.fr
www.atelieraconcept.fr

PRESS CONTACT

FE CONSULTING
21 rue Vincent Compoint
75018 Paris
T : +33 9 78 80 69 35
contact@fatmaerhalac.com
www.fatmaerhalac.com