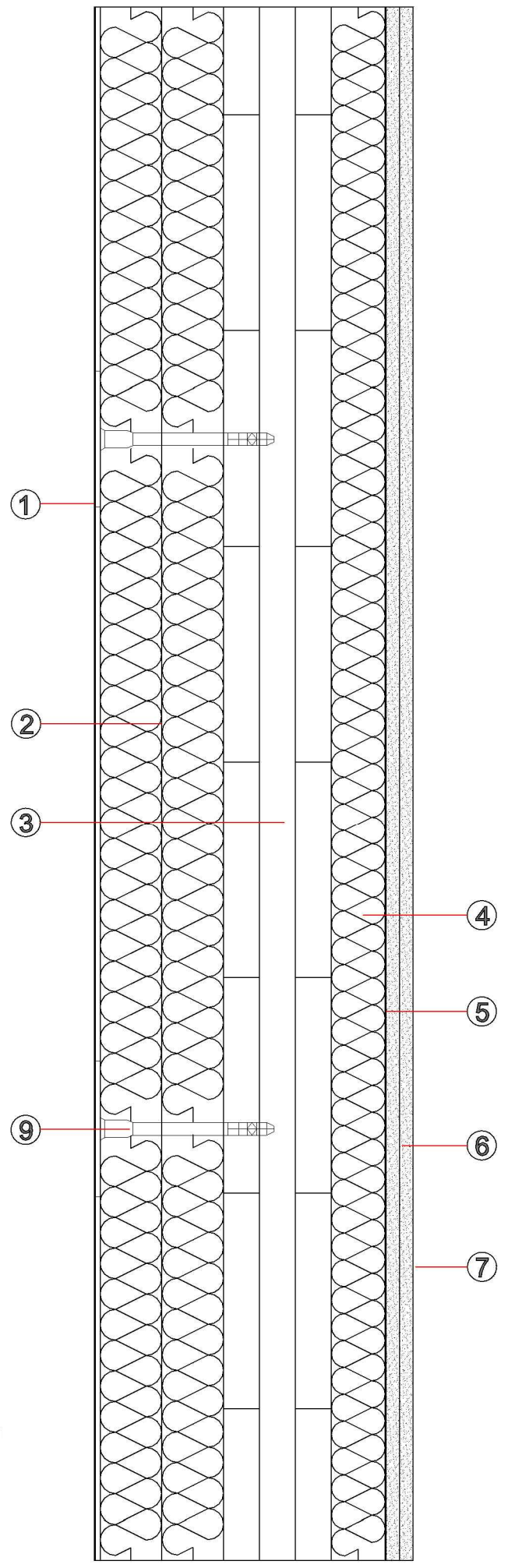


1



e

i

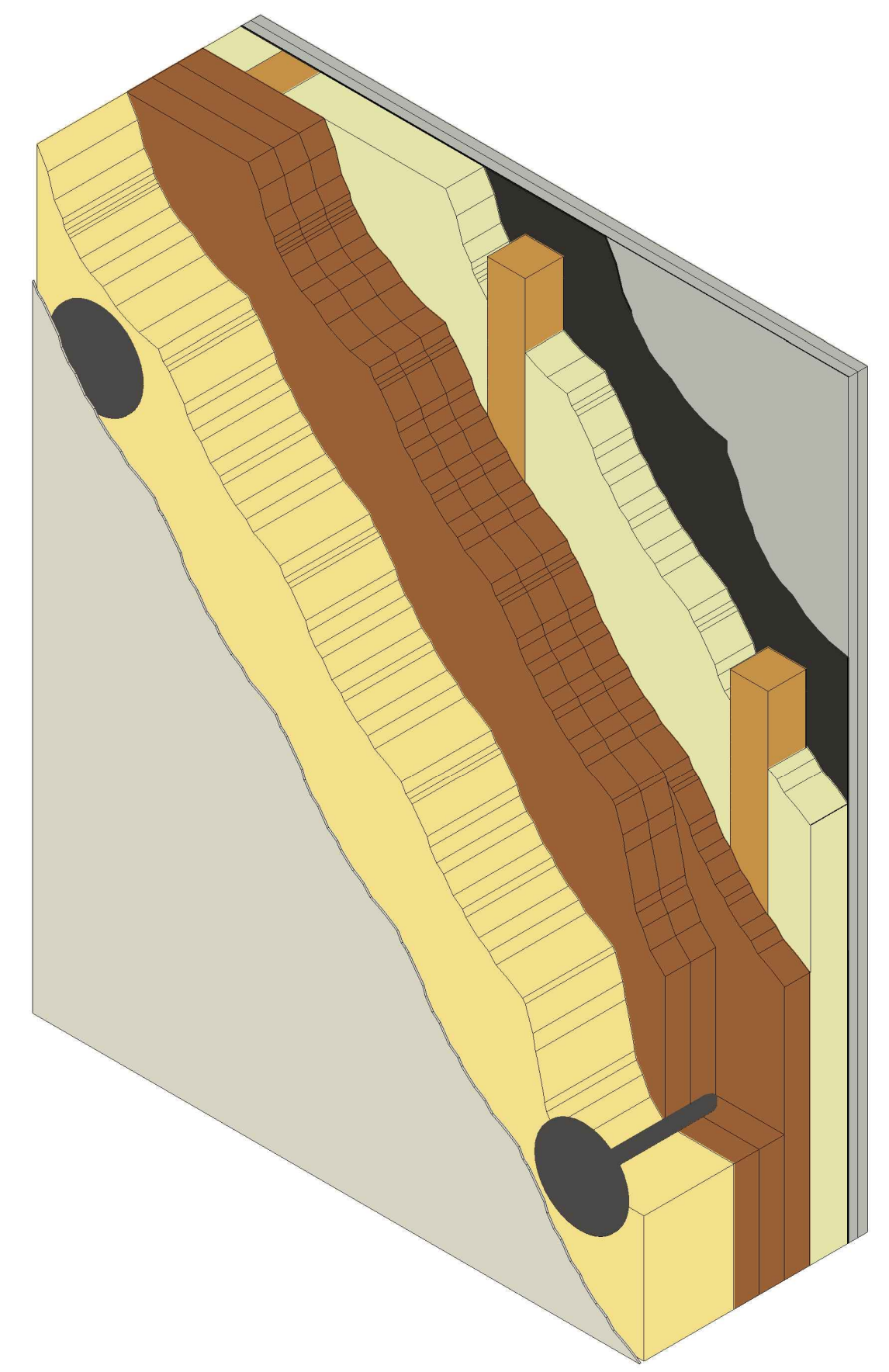
1. Sezione verticale

2. Sezione orizzontale

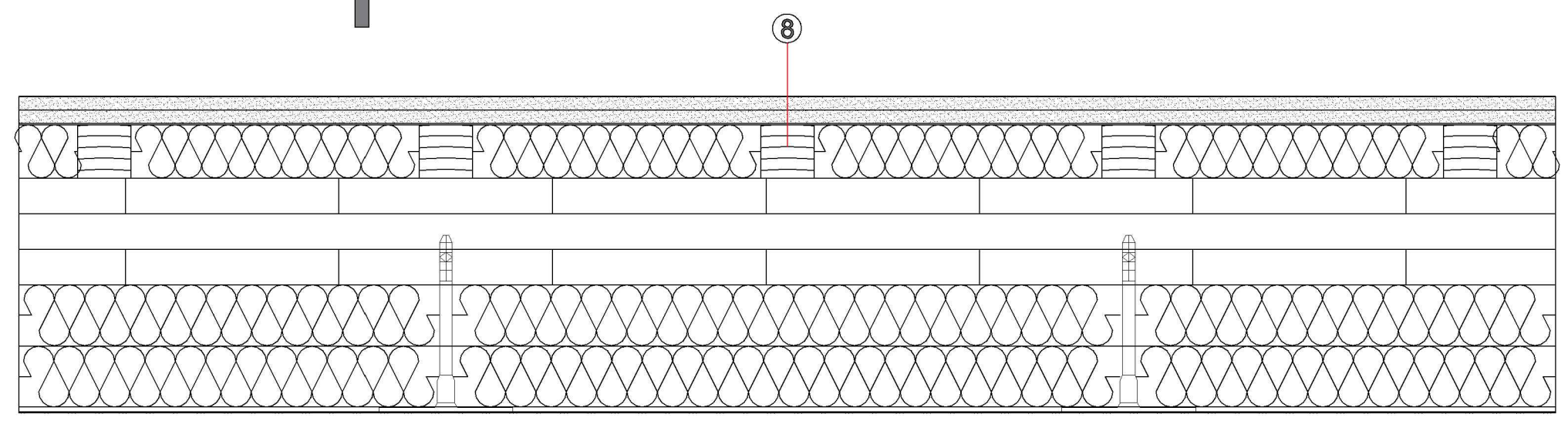
3. Spaccato assonometrico

- ① Finitura per cappotto, sp. 1 mm
- ② Isolante termico, sp. 115 mm
- ③ Struttura portante in x-lam, sp. 100 mm
- ④ Pannello lana di roccia, sp. 50 mm
- ⑤ Barriera al vapore, sp. 1 mm
- ⑥ Lastra in gessofibra, sp. 12,5 mm
- ⑦ Lastra in cartongesso, sp. 12,5 mm
- ⑧ Travetti di abete, sp. 50 mm
- ⑨ Tassello ad avvitamento con vite premontata

3



2



e