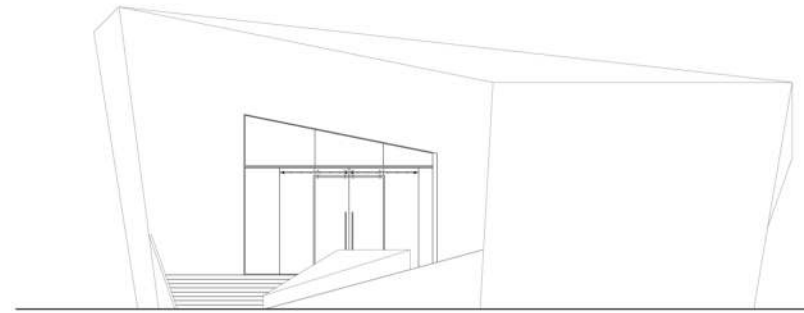
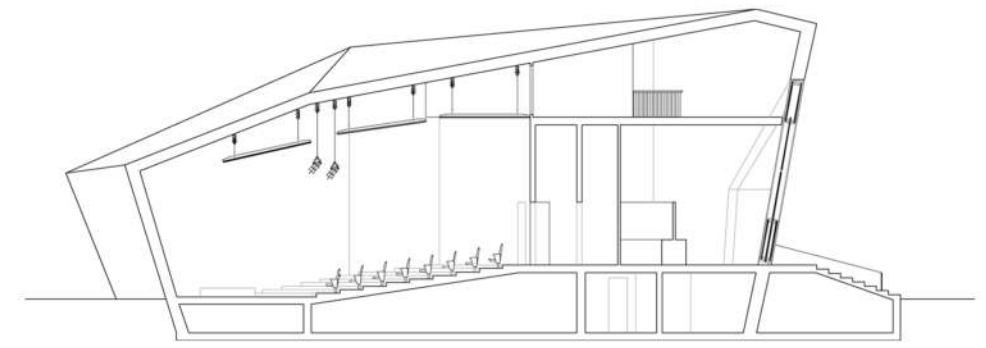


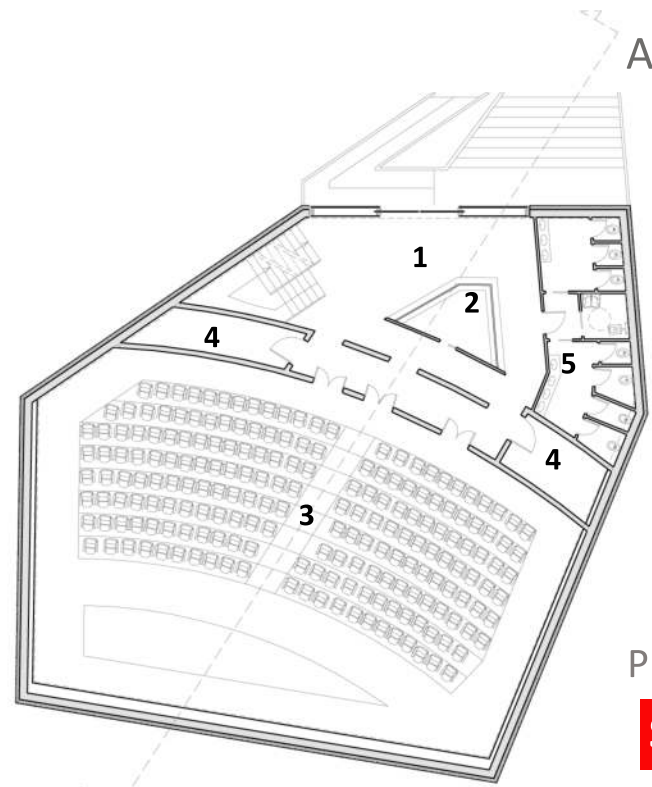
AUDITORIUM DA 200 POSTI



PROSPETTO NORD

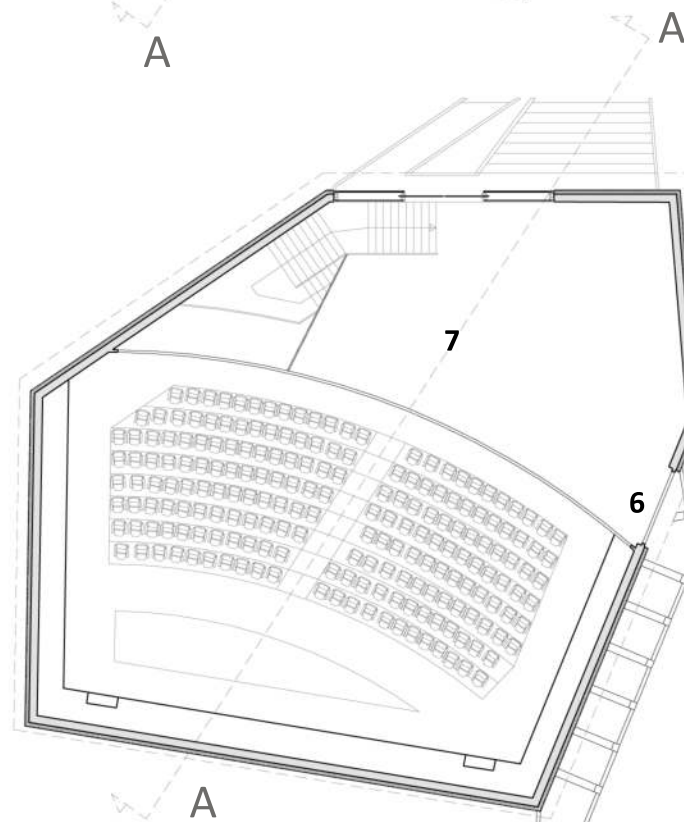


SEZIONE A-A



PIANO SOPRA ELEVATO + 1,35

SUL 440,36 mq



PIANO PRIMO +7,21

SUL 165,06 mq

- 1 HALL DI INGRESSO
- 2 BANCONE BIGLIETTERIA
- 3 SALA AUDITORIUM
- 4 GUARDAROBBA
- 5 SERVIZI IGIENICI
- 6 ACCESSO DAL BRICCHETTIFICIO
- 7 SALA DI ATTESA

