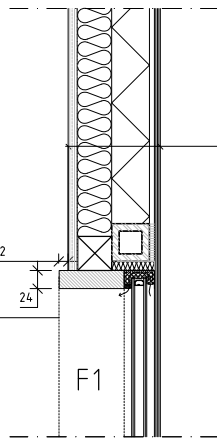
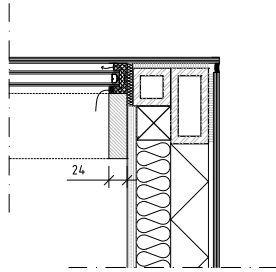
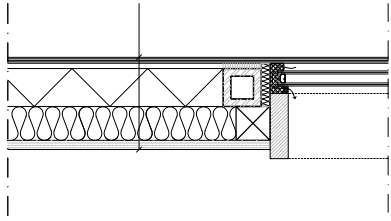
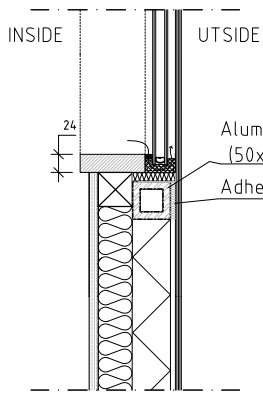


- 12 Plywood
- Vapour barrier-Windy 2000.
- 45mm Isulation-mineral wool
- 45x45 Battens
- 50mm Insulation-cellplast
- 50x50 Aluminium structure
- 6,4 Adhesive tape
- 8mm Spyglass

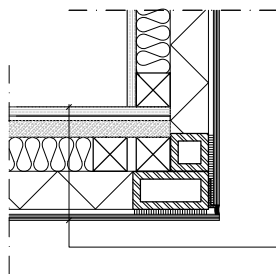
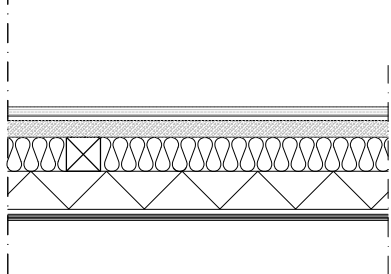


PLANED WOOD IN WINDOW BAYS

- 12 Plywood
- Vapour barrier-Windy 2000.
- 45mm Isulation-mineral wool
- 45x45 Battens
- 50mm Insulation-cellplast
- 50x50 Aluminium structure
- 6,4 Adhesive tape
- 8mm Spyglass



Aluminum structure (50x50)
Adhesive tape 6.4mm



- 12 Plywood
- 22mm particle board
- Vapour barrier-Windy 2000.
- Floor heating
- 45mm Insulation-mineral wool
- 45x45 Battens
- 50mm Insulation-cellplast
- Aluminium Profil enl. K.
- 6,4mm Adhesive tape
- 8mm Spyglass

Detail. Vertical section through facade/window.
All measurements in millimetres.

