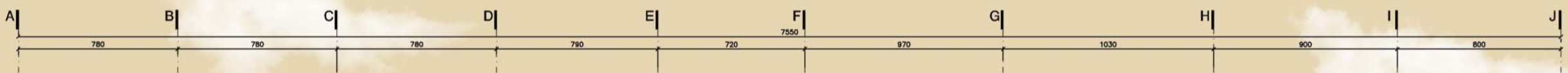




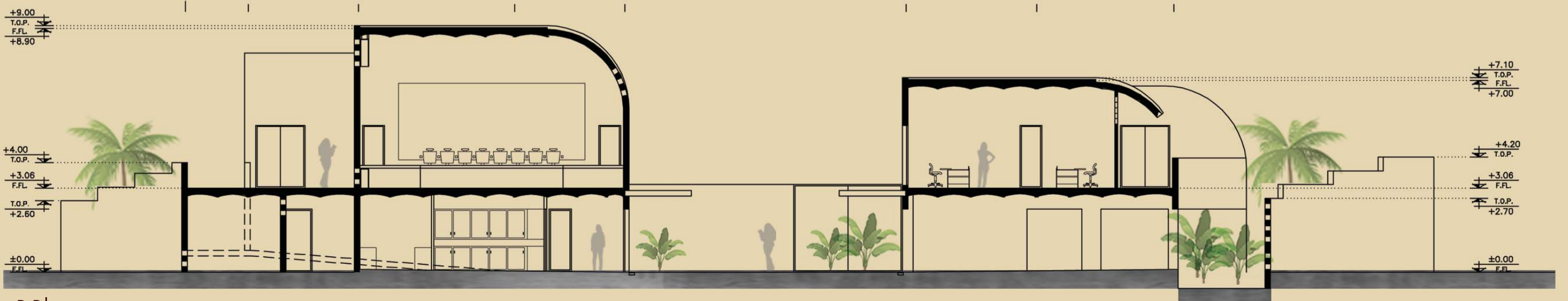
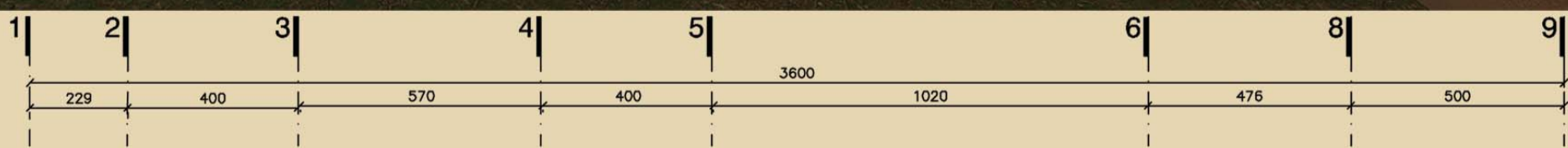
The central courtyard between the two buildings and the use of plants and the shading of the buildings have created a fun and cool atmosphere for the user. This causes privacy and introversion of the interior space, and girls can use this space with complete freedom during sports and recreation hours



Interior facade to north blocks | Scale 1:200



The most important factor in a hot and dry climate is the creation of shading spaces. this .The order has been created in the yard by installing a tent canopy Also in order increasing the flexibility of the space and expanding the open space of the prayer room, workshop, etc The restaurant on the ground floor is separated from the surroundings by bamboo partitions has been This space is like a roofed courtyard in very hot seasons of the year Pilot and Shadow- for gathering and group activities In addition to the secondary access to the first floor, the stairs of the west wall, in order to create A space for children to sit in the bells of fun and watch special events in the seasons Cool year and evenings, as well as the space below it with age for Group activities such as theater music and local dances have been created This terrace has also created a space for teachers to sit on the first floor In case of overcrowding, it can be used from the adjacent workshop space which is partitioned from this The separated part is also used



Section D-D | scale 1:200