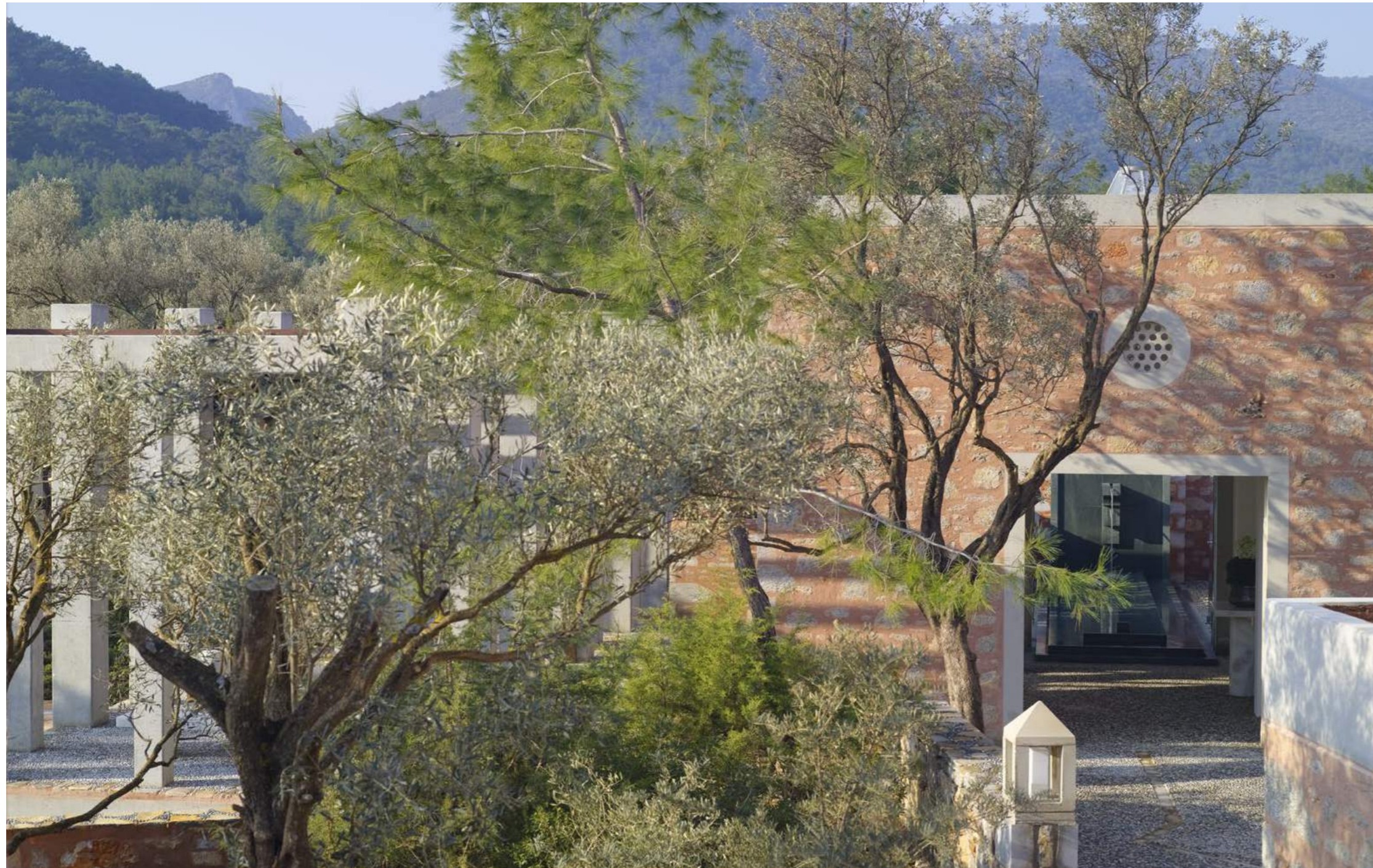


AMANRUYA





Amanruya is located on the southeastern Aegean coast of Turkey, on the northern coast of the Bodrum Peninsula in Mandalya Bay. Named after the Sanskrit-derived word for peace, 'aman', and the Turkish word for dream, 'ruya', the property is surrounded by ancient olive groves and the hills behind are cloaked in Mediterranean pine forest.



The resort combines Mediterranean and Ottoman architectural design elements, all the while complementing and respecting the property's pristine natural surrounds.

On arrival the tone is set for the cool, spare and elegant interior design found throughout Amanruya.





Amanruya's stone structures flow from and into each other ensuring a natural organic growth of spaces. The unique domed carpet gallery (*left*) leads into the art gallery (*above left and centre*) with its white marble floors and white walls, while the long, sleek boutique (*above right*) offers excellent examples of local textiles, jewellery and artifacts.



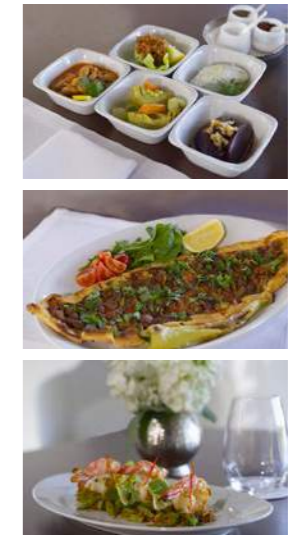


The striking, three-storey Library Tower houses a lounge on the top floor with large picture windows. Views are of the ocean on one side and pine forests on the other.



Lined with green marble from Antalya in southern Turkey, Amanruya's 50-metre infinity pool is surrounded by a number of dining and relaxation pavilions.





Turkey is blessed with a variety of microclimates resulting in an amazing array of produce. This produce, combined with the freshest of local seafood, allows the kitchen at Amanruya to deliver a seasonal menu featuring Turkish and Mediterranean cuisines.

The tranquil Pool Dining Pavilion (*pictured*) overlooks the main swimming pool.





The Wine Cellar (*left*) with its lofty vaulted ceiling and serene views is an atmospheric setting for special events, whether dinners or cocktail parties.

Located higher on the hillside, the Dining Pavilion (*below*) offers a slim, wraparound balcony and panoramic views.



The spacious Lounge with its divan-style seating, dark beamed ceiling and wraparound windows is the ideal venue in which to enjoy afternoon tea, an evening cocktail or simply to pass some time with a book.



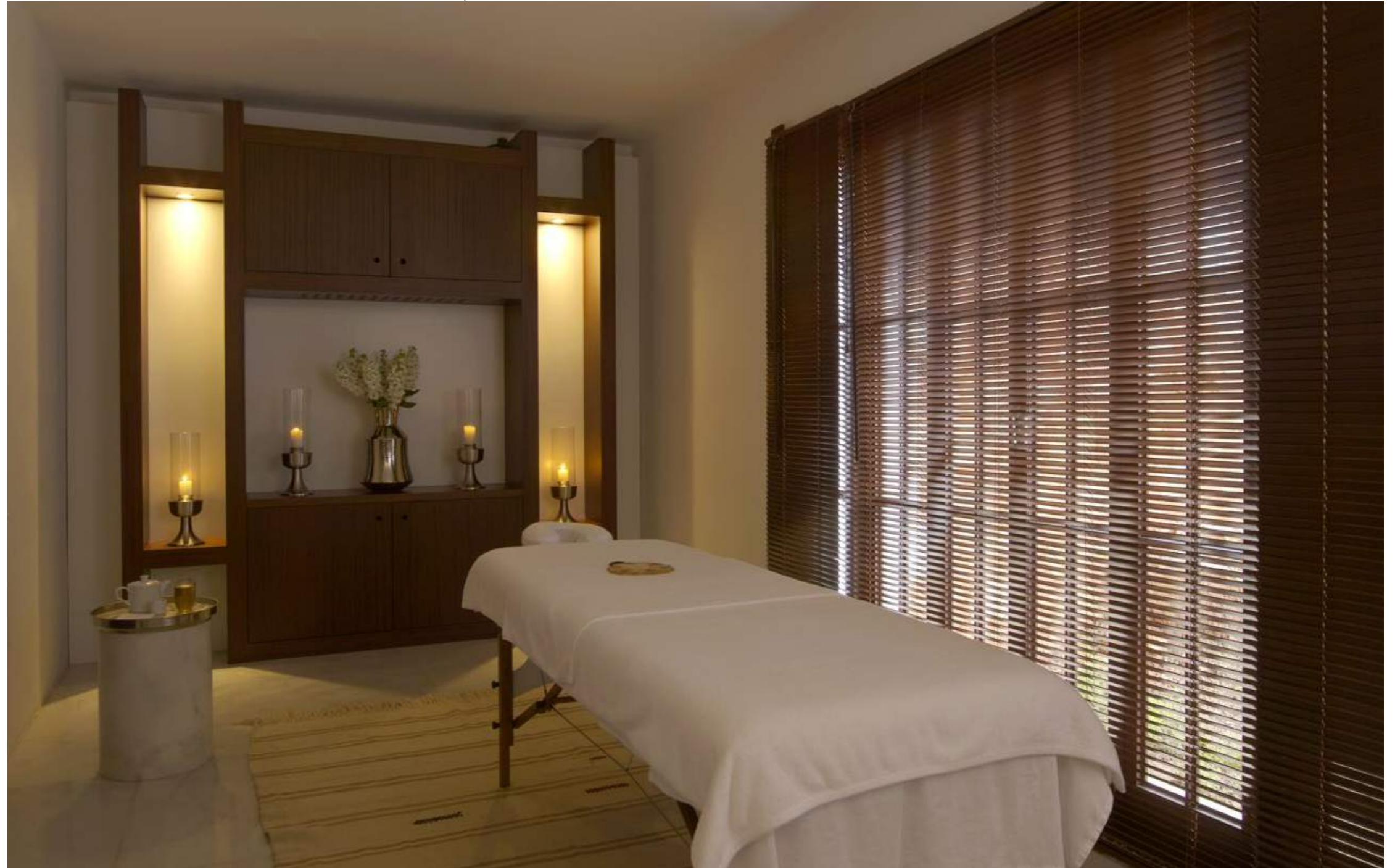


Guests can also take time out in the elegant Wine Lounge (*left*) or the more casual, open-air Pool Pavilion (*above*). The Meeting Room (*below*) allows business matters to be conducted in comfort and privacy.





Offering a spa menu of facials, massages and wellness therapies, the spa treatment rooms are situated close to the main swimming pool.





Amanruya has the intimate and organic ambience of a village in a picturesque natural setting. Pebbled pathways lead from the main buildings to the 36 Pool Terrace Cottages, each with its own private garden and swimming pool.



The contemporary stone cottages feature pane-glass windows and shutter screens, and are entered via a small porch which leads to a combined living and sleeping area.





Designed to welcome and soothe, the cottages are gracious homes away from home offering a four-poster bed, writing desk, dining table and chairs, couches and a Turkish *mangal* charcoal fireplace.



A separate vanity area (*below*) leads into a large, naturally-lit bathroom. This features a rain shower and a large bathtub from which one can enjoy private garden views. An outdoor shower can be found in the garden.



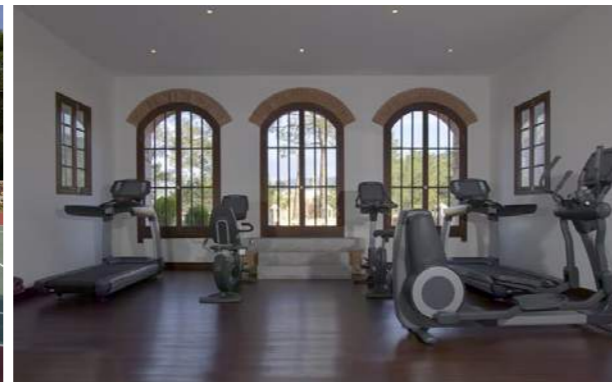


Each cottage enjoys its own private garden and grey-green marble swimming pool. The layout of the gardens and pools vary, but all feature pergolas with large cushioned daybeds. Twenty two of the pools are heated while 14 are kept at the ambient temperature.





In addition to the main swimming pool (*above*), recreational facilities include a tennis court, a gym and a yoga pavilion. The Beach Club offers lounging decks (*opposite top left*) and a refreshment terrace (*opposite top right*) overlooking the small pebble beach and wooden jetty. Ideal for relaxing and enjoying an alfresco lunch, the Beach Club also provides a variety of non-motorised water sports as well as a sailing boat.





Bodrum

Situated just south of Amanruya, the popular holiday town of Bodrum is known for its vibrant tavernas and the 15th-century Castle of St. Peter (*above*). Between Bodrum and Amanruya lies the seaside village of Torba. From here boats depart for Didyma and Miletus – two ancient cities located north of the resort. There are also numerous villages in the area, many focused on a specific craft ranging from carpet weaving to pottery.



Torba Bay





Library of Celsus, Ephesus



Odeon, Ephesus



Terrace houses, Ephesus



Head of Medusa, Didyma

The Aegean region of Turkey offers classical history and natural beauty in equal measure. This fabled coastline is where Homer's heroes were born, where the ancient Greeks consulted their oracles and the Romans built magnificent temples to honour their gods. Through its magnificent ruins, the region tells a story spanning 5,000 years of Greek and Roman history.



Lake Bafa



Temple of Zeus, Euromos



The moon over Mandalya Bay – home to Amanruya.

Ā M A N

AMANRUYA

Bülent Ecevit Cad., Demir Mevkii, Göltürbükü, TR-48483 Bodrum, Turkey
Tel: (90) 0252 311 1212 Fax: (90) 0252 311 1213 Email: amanruya@amanresorts.com

aman.com