



CORPORATE C

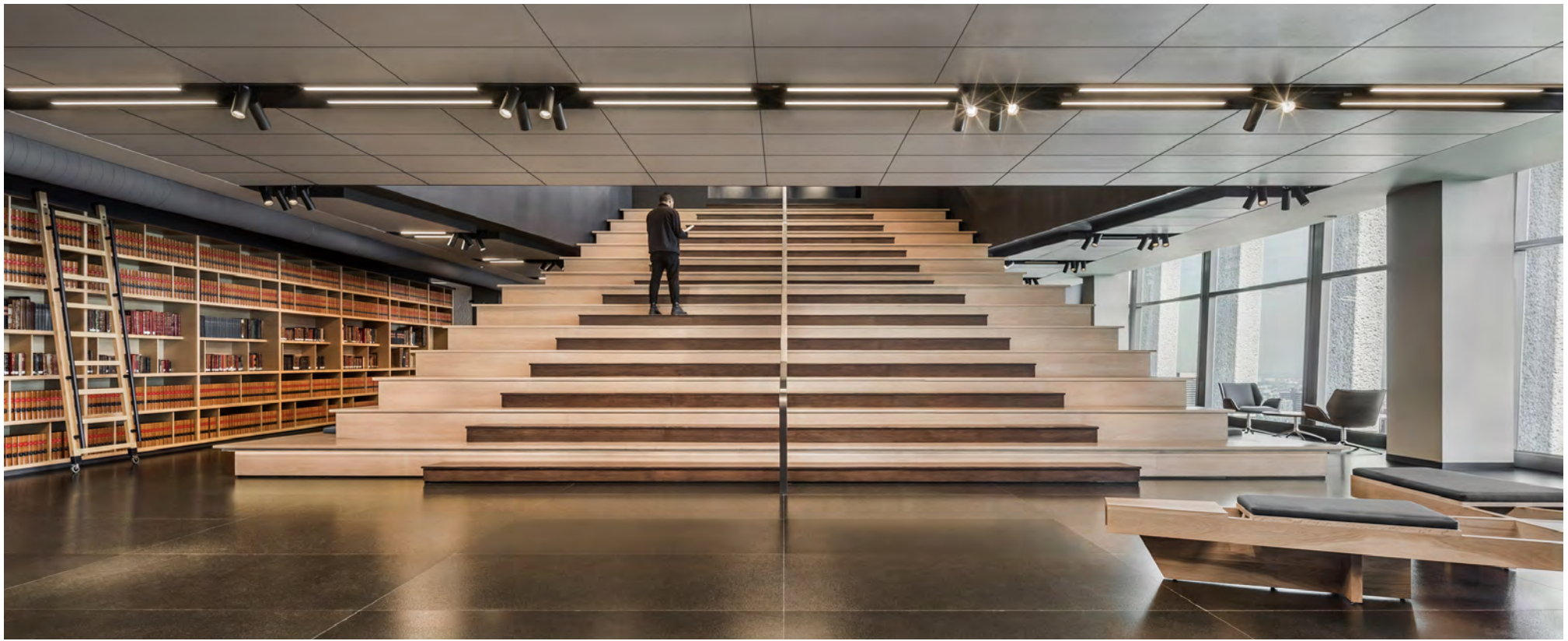
Mexico City / 2017

ESRAWE

INTERIORS & CUSTOM FURNITURE DESIGN BY ESRAWE STUDIO



Main access, agora



A LAW FIRM WITH 80 YEARS OF TRAJECTORY, THAT INVOLVES THE COLLABORATION OF THREE GENERATIONS OF LAWYERS AND IT IS CONSIDERED THE MOST RELEVANT LAW FIRM IN THE COUNTRY, IT HAS AN INTERNATIONAL PRESENCE AND A WORLDWIDE NETWORK.

The proposal aims to promote through design the sense of community, collaboration, cultural diversity and innovation. We have created a dynamic space that promotes human interactions, teamwork, all within solid ethics.

The LEED building was designed by the recognized Mexican architect Teodoro Gonzalez de León. It has one of the best views in the city to the major park, Chapultepec, and its volcanic skyline, in particular from the council hall.

The firm possesses with pride one of the most relevant law book collections in the country. One of their main requests was to display them for the use of the team and visitors, that created for us the perfect excuse to use the library not only as a container but most-

ly to represent metaphorically the spirit and tradition of the firm. This library holds the main staircase and integrates the two levels through the agora, becoming also the main distributor for meeting rooms, offices and workstations.

The program requested a central space that was able to gather all the team for events, announcements, lectures and conferences. The headquarters holds up to 300 employees and is set in two levels which sum up a total of 5000 square meters.

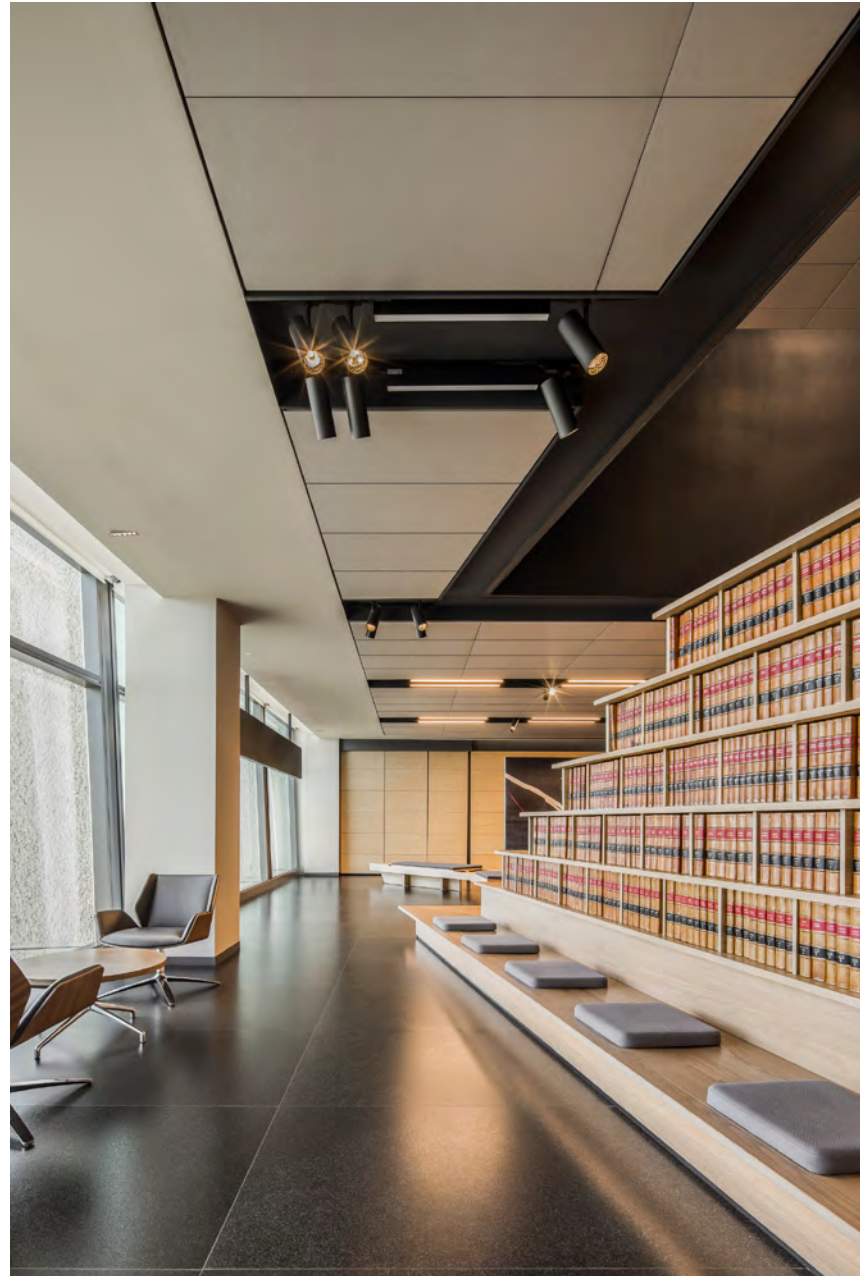
The project is solved through clusters or neighborhoods of different specialization teams that are composed by associates cubicles and working stations. Between the clus-

ters we have integrated different configurations of lounge areas for informal meetings, gathering points and breaks that promote interaction, community and a sense of belonging. Some of these lounge areas provide coffee and copy stations on both floors. There are also reconfigurable meeting rooms for the team, clients and visitors.

To ensure natural light and views to all the team, we proposed an arranged set of glass boxes in the associates' offices at the facade, that create transparency on one side and on the other, a couple of terraces that integrate a lush green landscape designed by Taller Entorno. The terrace includes a coffee shop and a lounge area accompanied by the garden.



The library contains one of Mexico's most relevant law book collections



Gathering point and reading area





Agora view from the upper level



Reading area surrounding the agora's opening on the upper level



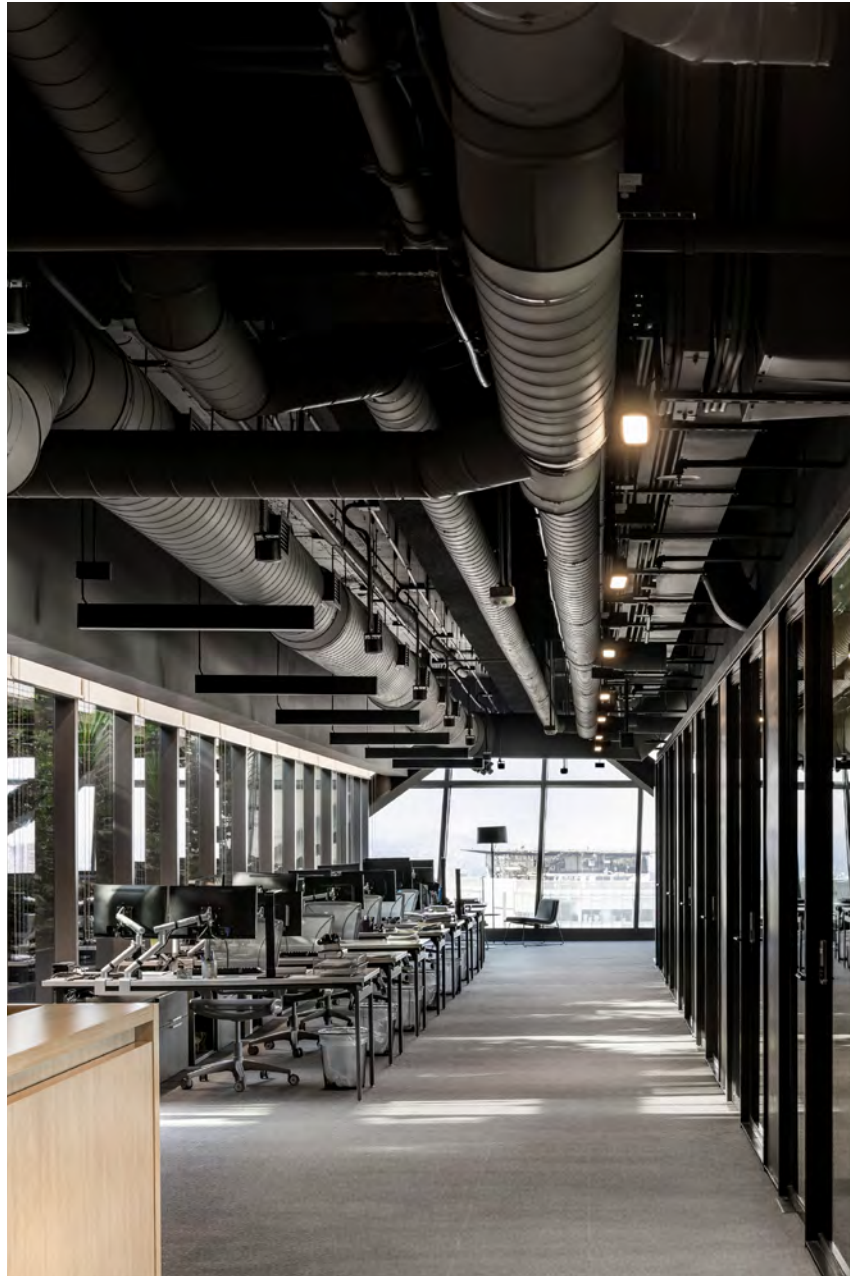
Hosteling table



Council hall



Council hall



Open space workstation

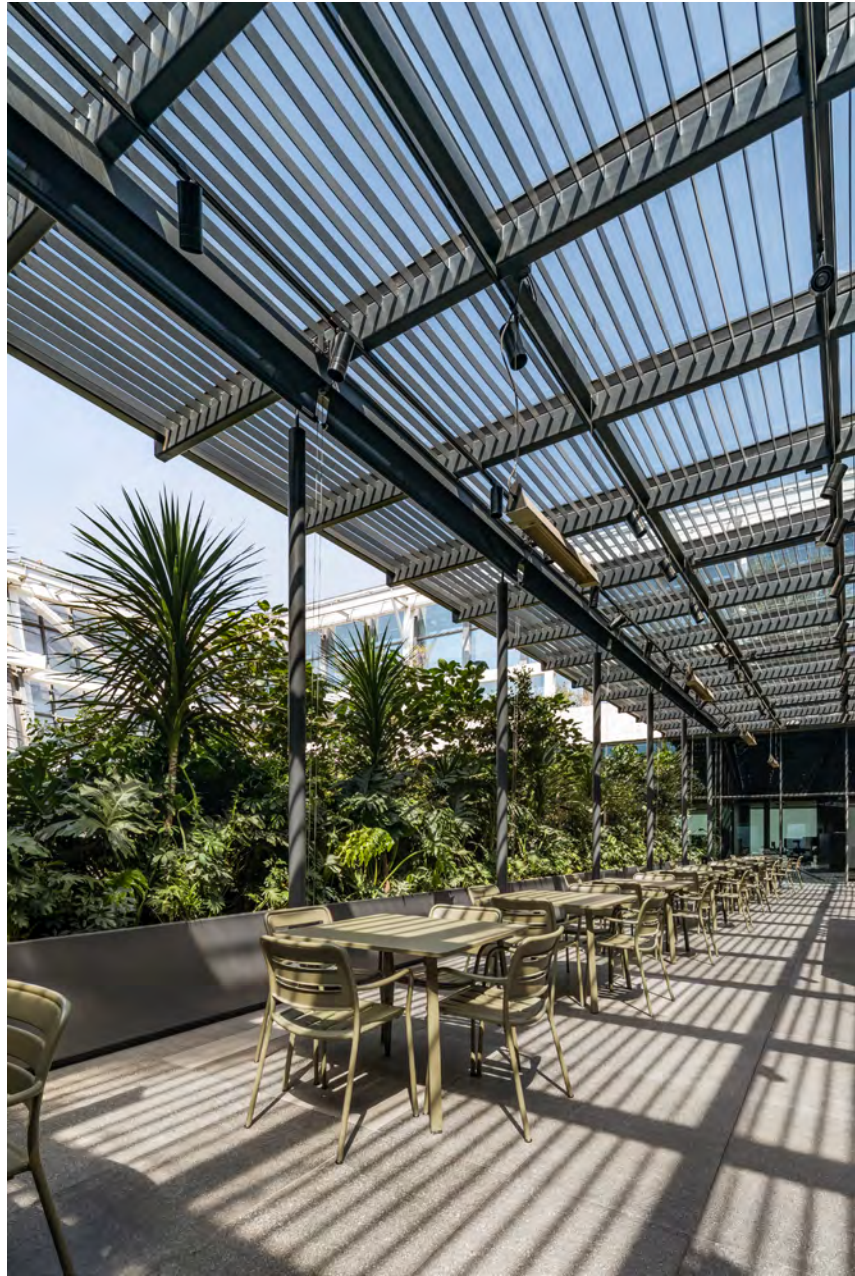


Meeting rooms

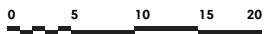
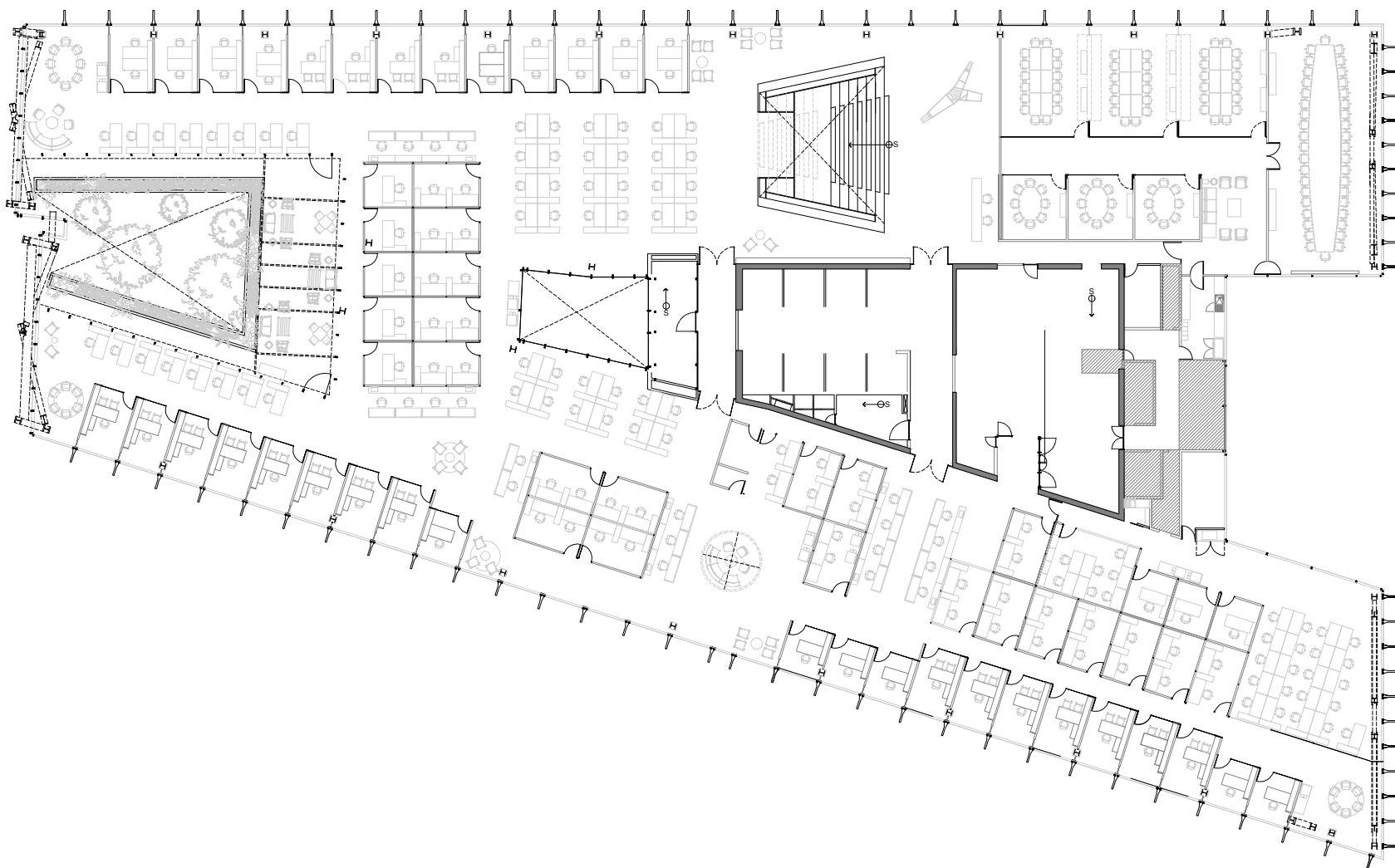




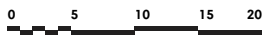
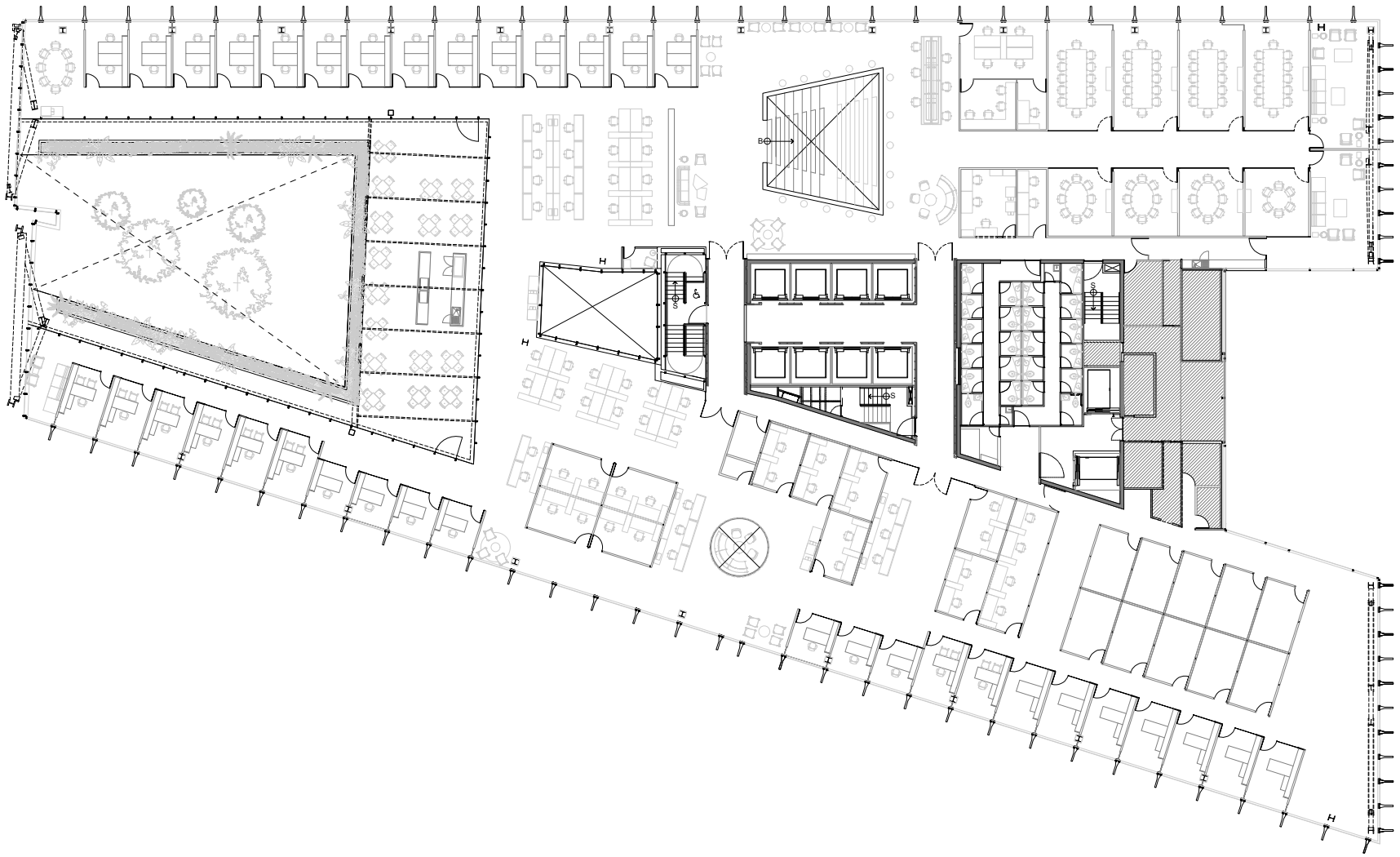
Gathering point and front desk



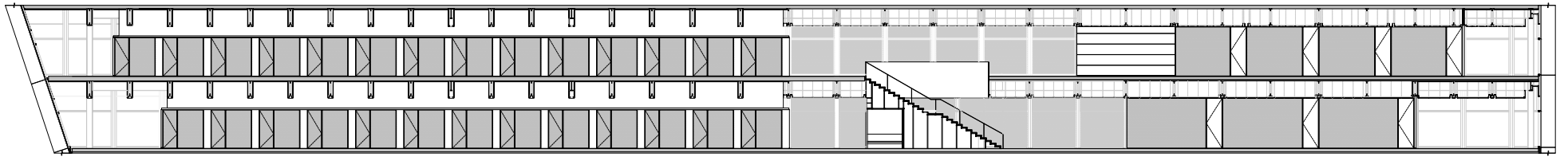
Terrace



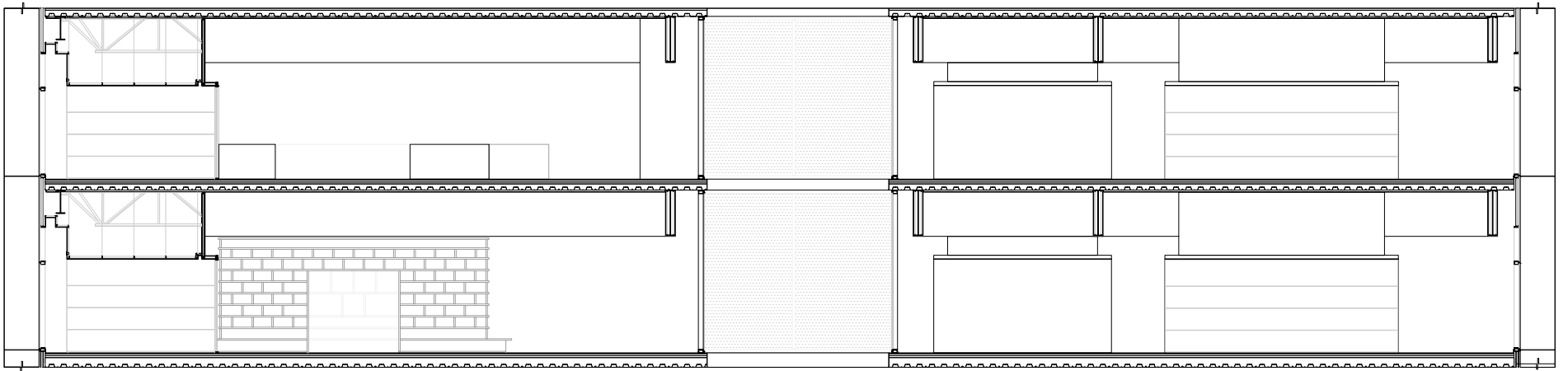
FLOOR PLAN



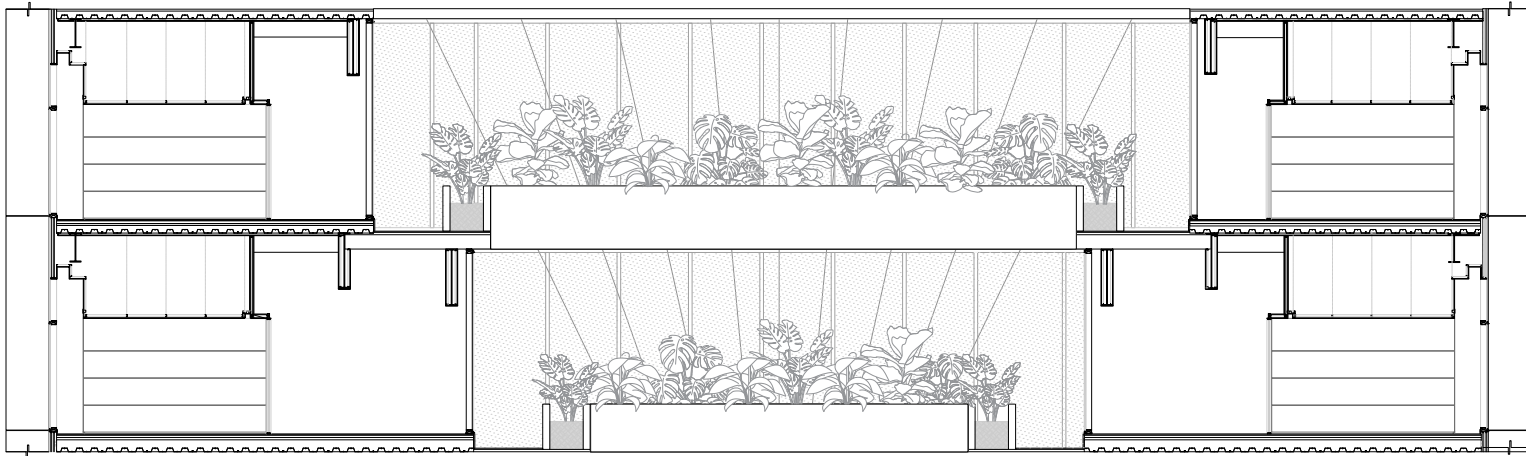
UPPER LEVEL



LONGITUDINAL SECTION



BUILDING SECTION 1



BUILDING SECTION 2

ESRAWE

CORPORATE C

Location / Mexico City

Total Surface Area / 7,330 m²

Year of completion / 2017

Creative Direction / Héctor Esrawe

Interior Design and Furniture / Esrawe Studio

Project Leader / Jan Müller

Interior Design Team / Javier García-Rivera, Manuel Rodríguez,
Antonio Chávez, Ricardo Ramírez

Furniture Design Team / Eduardo Álvarez, Roberto González,
Cristina Heredia

Technical Development / Gensler

Renders / Moisés González, Yair Ugarte

External Advisors

Landscaping / Entorno Taller de Paisaje

Lighting / Evoke Architectural Lighting Design

Photography / César Béjar

Media contact

Cristina Margain

medios@esrawe.com