



Tochal Shopping Center



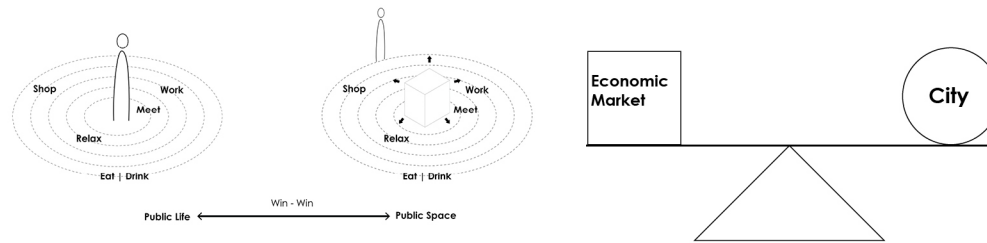
Hitra Office & Commercial Building



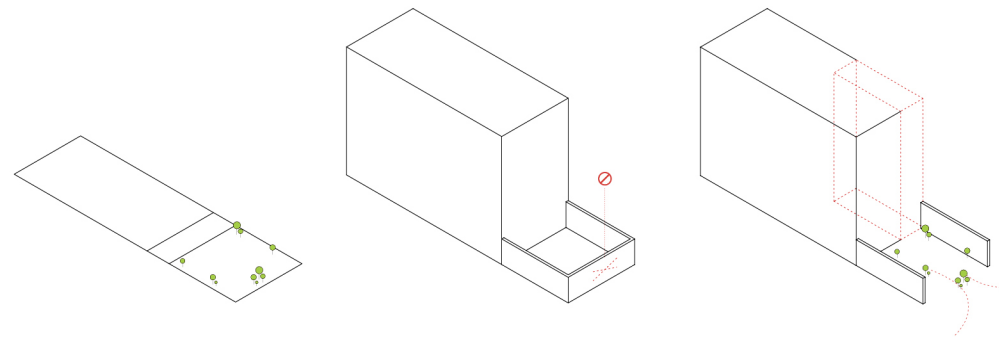
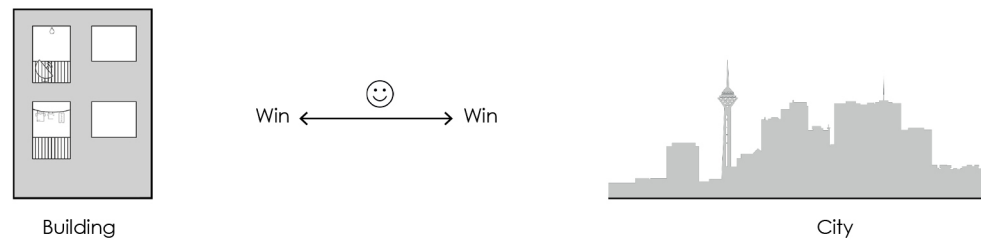
Galleria Shopping Center



material overload  
form overload  
visually disturbing elements  
color overload

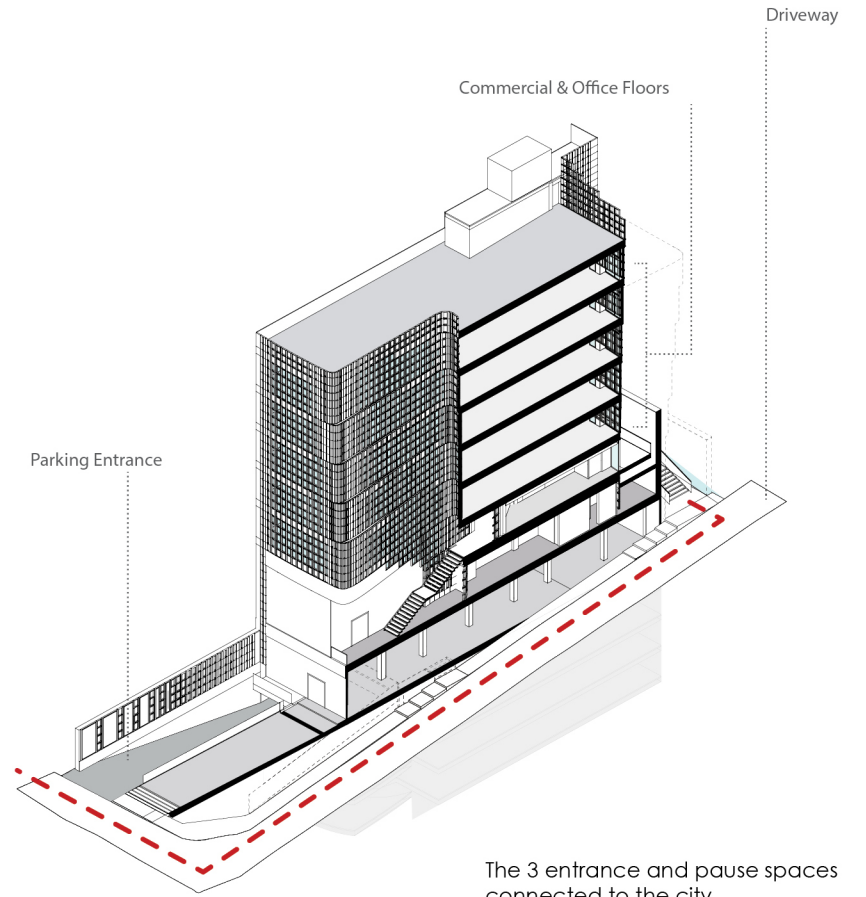


In cities like Tehran, the empty spaces in between buildings could be used as public platforms to make the city more dynamic. These spaces then form public spaces inside the buildings.

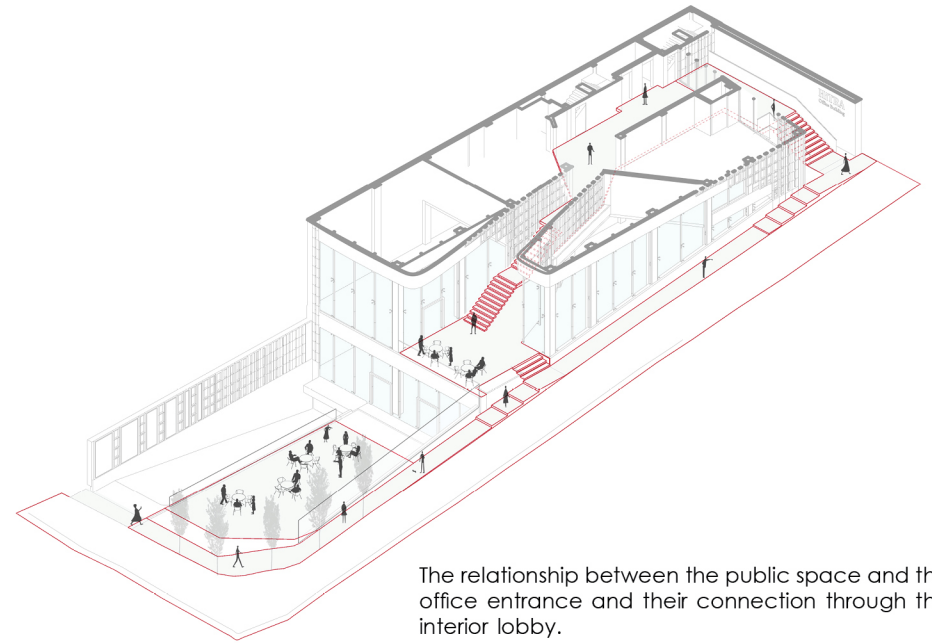
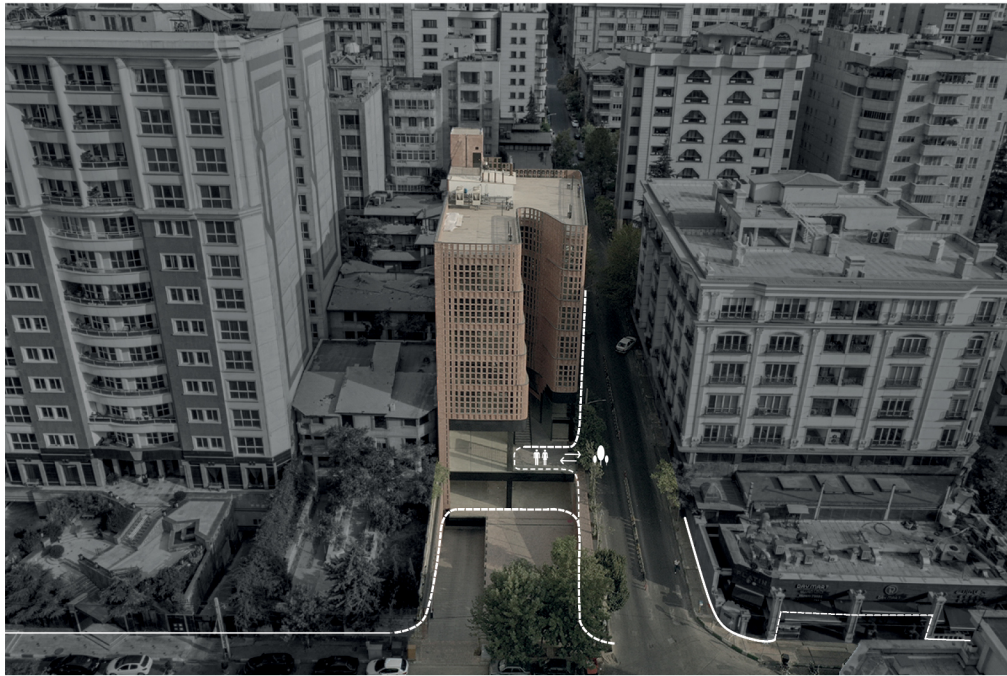


60% + 2 m  
regulation of building area  
according to  
Tehran municipality

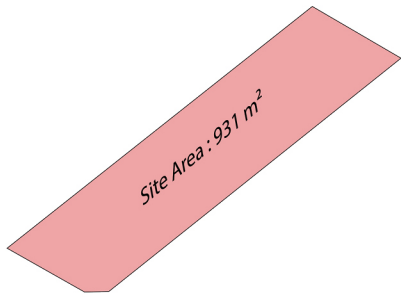
typical commercial  
& office building



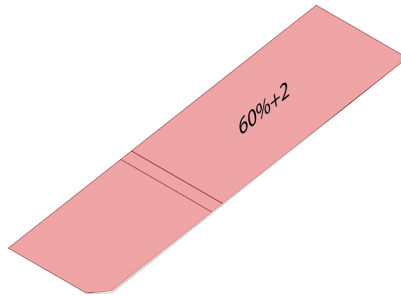
The 3 entrance and pause spaces connected to the city.



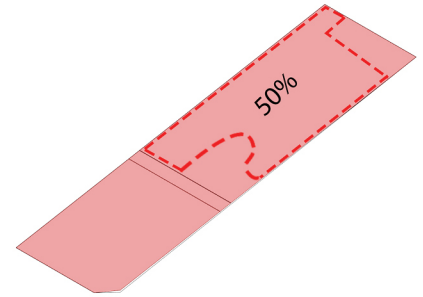
The relationship between the public space and the office entrance and their connection through the interior lobby.



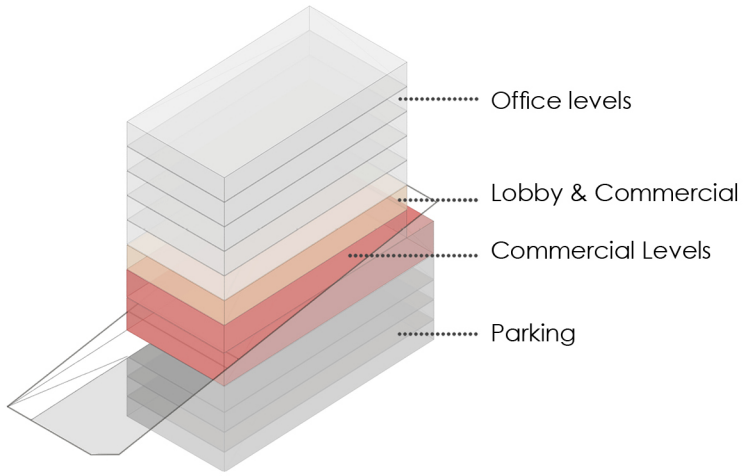
1



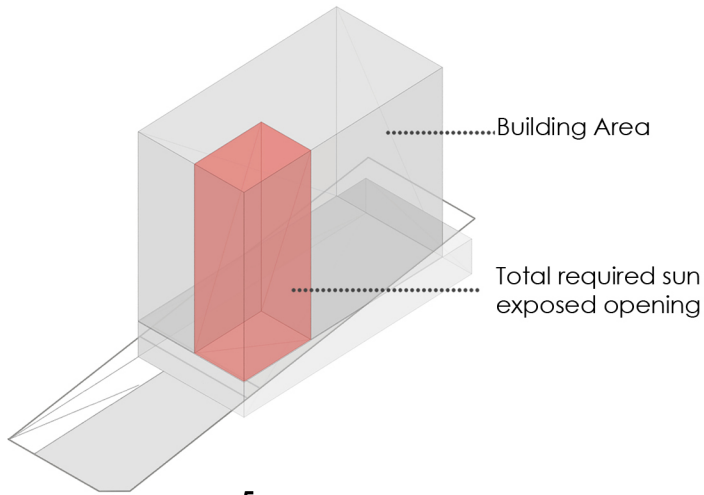
2



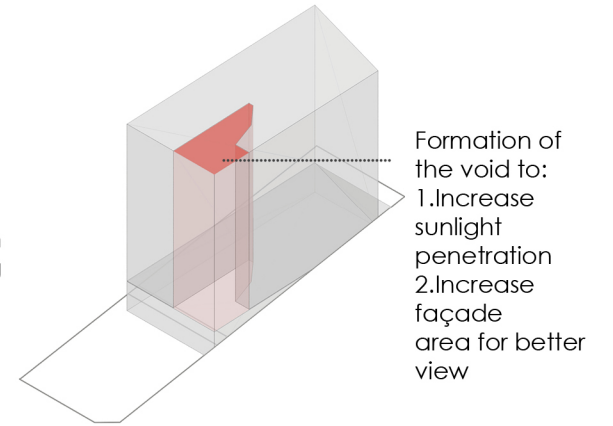
3



4

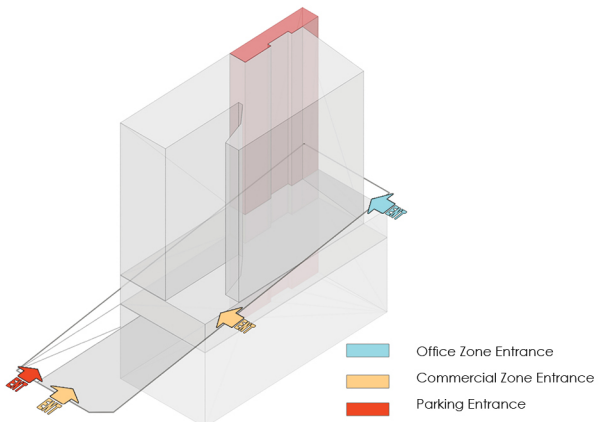


5

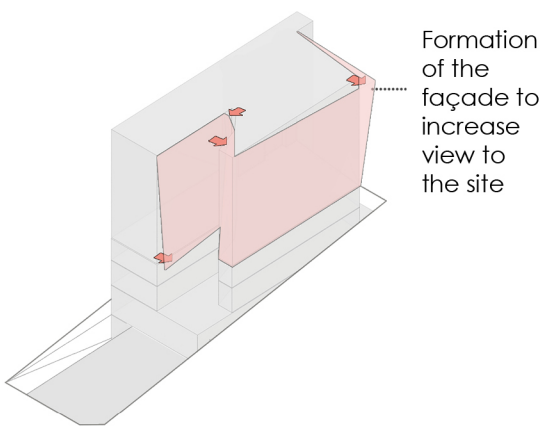


6

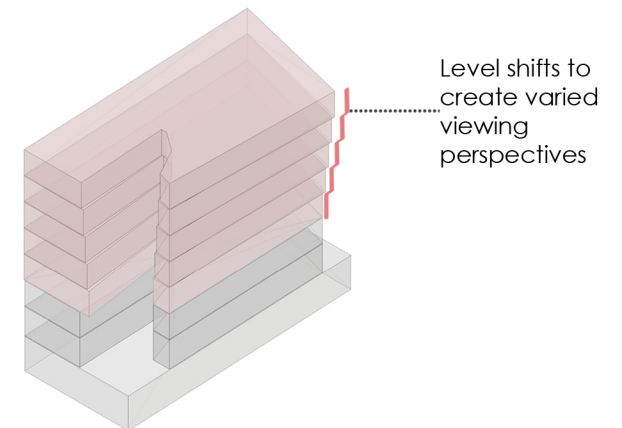
Vertical Circulation



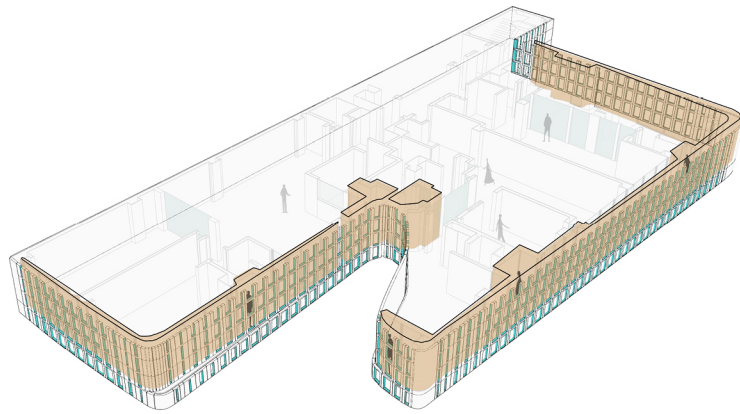
7



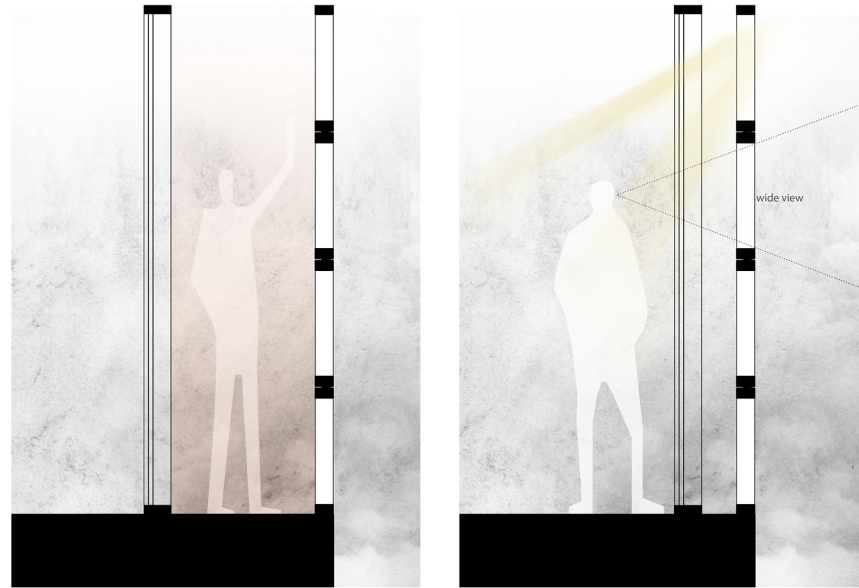
8

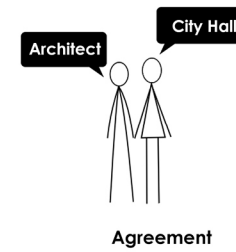
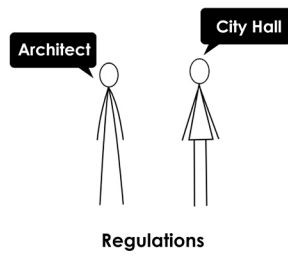
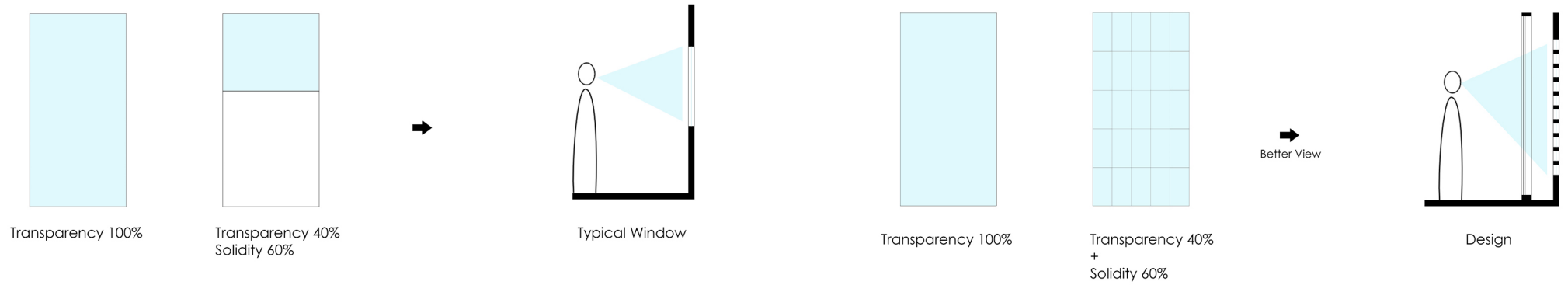


9



Elements such as balconies and windows where formed behind the façade shell to minimize variations on the façade.





The two layered façade allowed for maximizing transparency on the second layer while responding to the City regulations on the allowable glass-solid percentage of the façade.



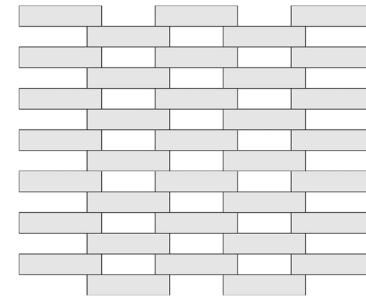
Solidity

+

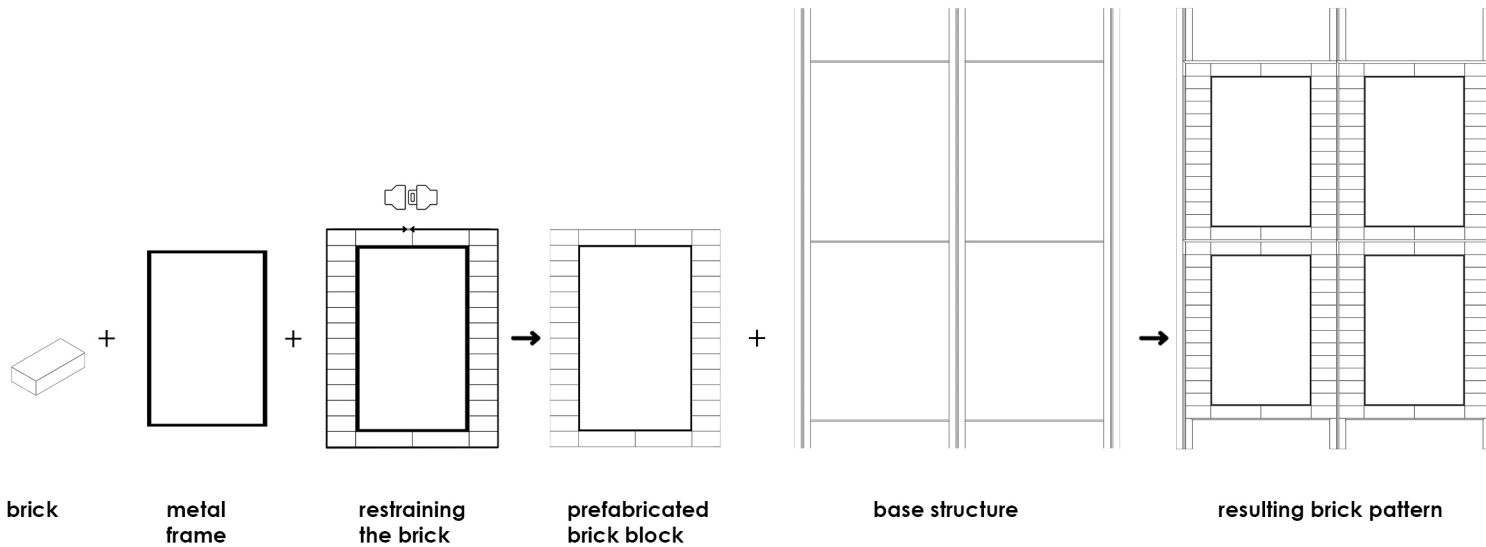


Transparency

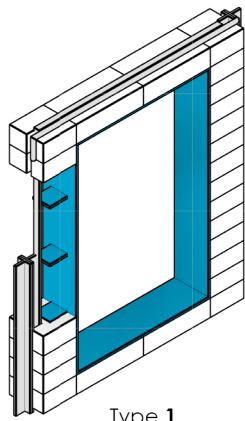
→



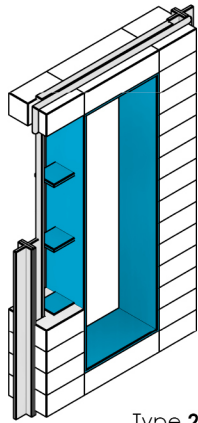
Traditional Brick Pattern  
(Fakhro-Madin)



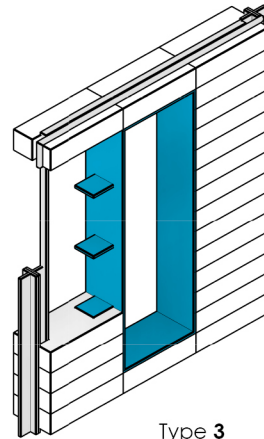




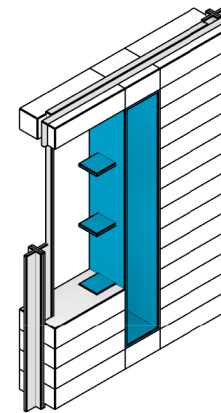
Type 1



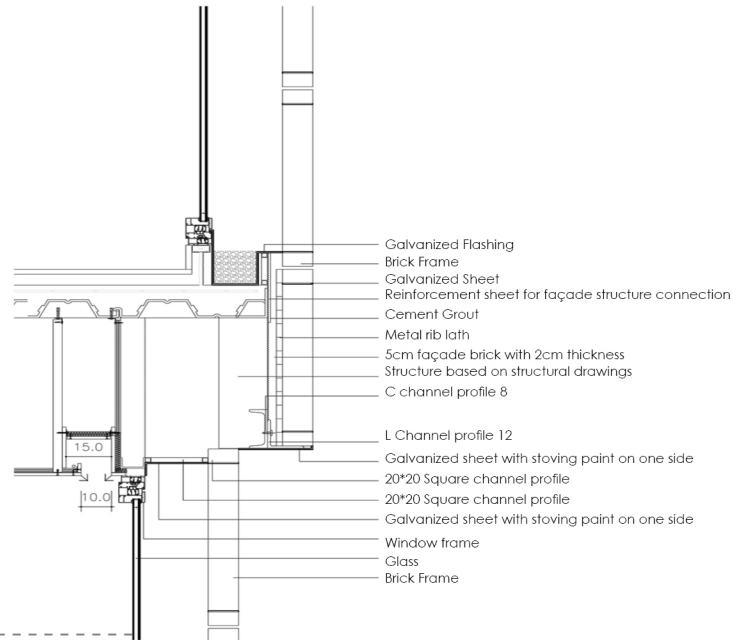
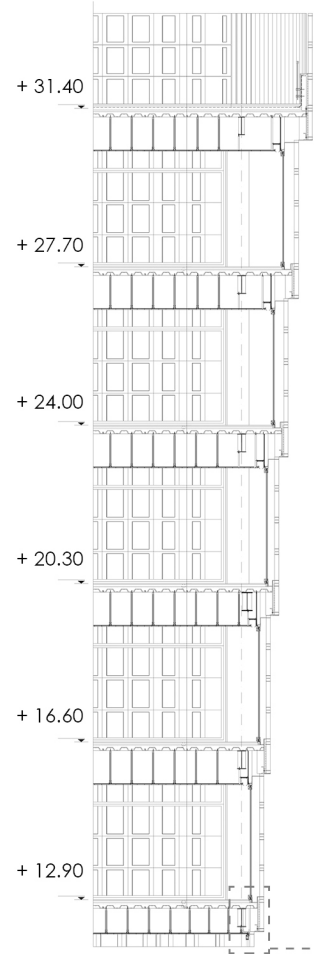
Type 2

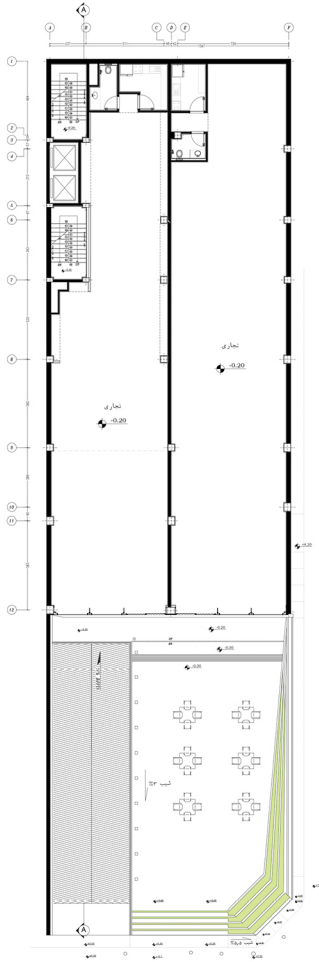


Type 3

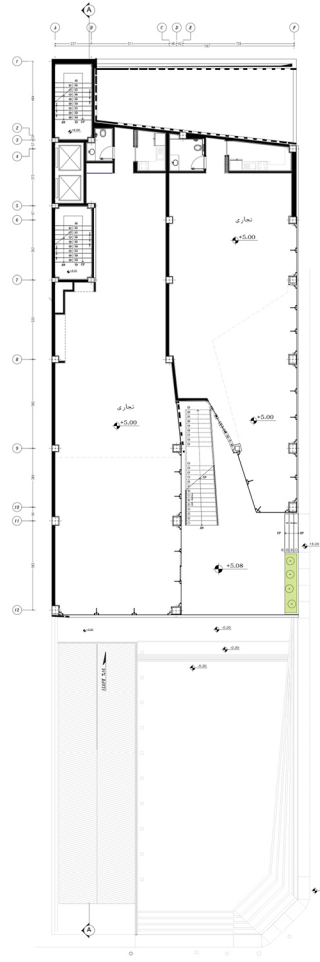


Type 4

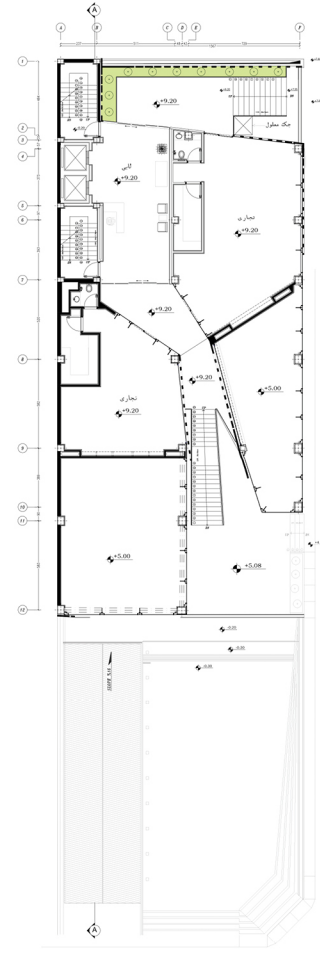




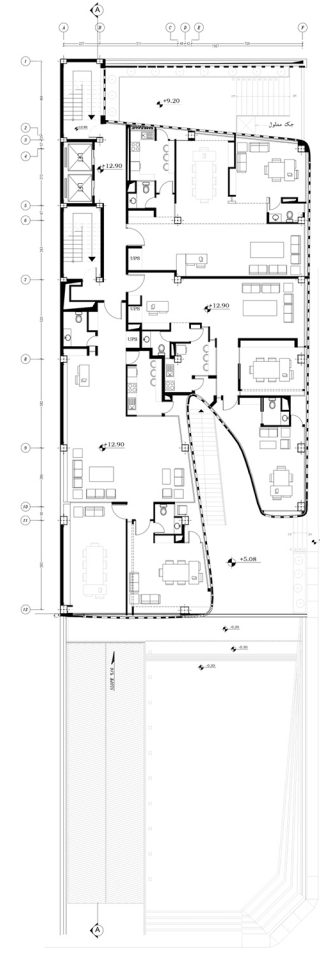
**Commercial Ground** Floor Plan



**Commercial First** Floor Plan



**Commercial Mezzanine** Floor Plan



**Office First** Floor Plan

