

**Josep
Ferrando
Architecture**

HOUSE IN SANT CUGAT, BARCELONA
a house between party walls is a project
sensitive to the inhabitant and the city

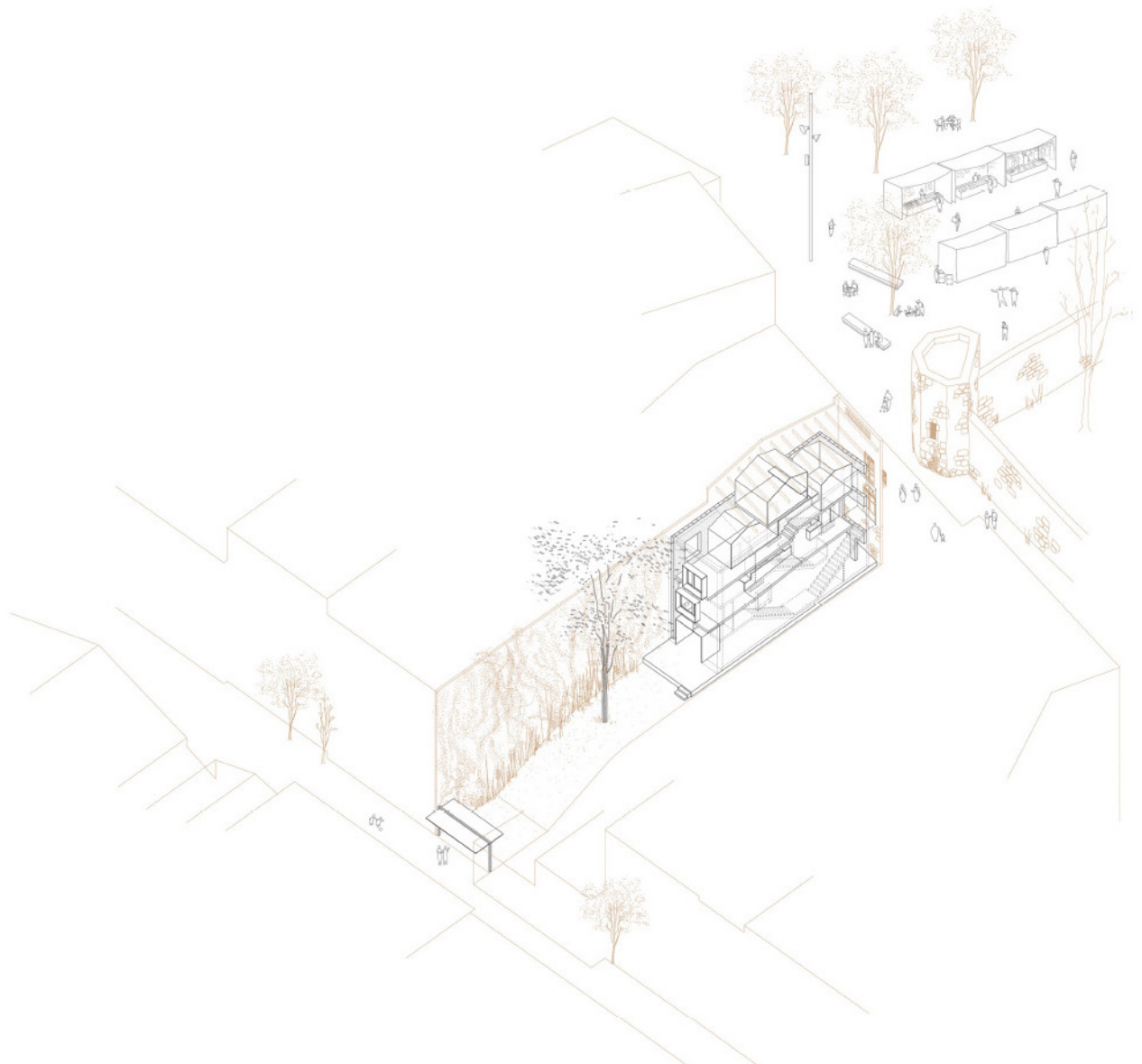


Josep Ferrando Architecture

The architect Josep Ferrando resolves the complex urban conditions of the context and the site in which the house is located – less than 5 meters wide and with a particular topography that constrains the parcel between two streets situated at different heights – starting the conception of the project from the shaping of the volume.

The solution developed consists of inserting a new house of concrete blocks inside of the pre-existing home positioned between two thick walls dividing it from neighbouring houses. In this way, three volumes are generated, one serves as a storage space, another is dedicated to circulation and a third one which articulates in habitable terms all the spaces that compose the building.

The interior of the concrete house is inhabited through the superposition of laminated wooden panels which adapt to the topography, organize the space and convey a warm atmosphere to the living spaces.



Josep Ferrando Architecture

The challenge of this new home lies in approaching the process leading to the architectural project with creative and constructive line guides able to resolve the decisive conditions inherent to the project. Concretely, for Josep Ferrando, one of the young Spanish architects with major International projection, the starting point was to recreate a completely new house between walls in the centre of Sant Cugat, which is considered a Cultural Patrimony, and therefore obliged the preservation of the house's main facade and roof. In addition, the building had to be less than 5 meters wide and deal with a complex topography which constrained the site between to streets with different heights.

Ferrando, far from limiting his action to a predictable and submissive design constrained by the restrictions of the context and plan, chose to resolve the complexity of the assignment constructing starting the conception of the project from the shaping of the volume. A new house made of concrete blocks has been inserted in the pre-existing building. The dividing walls adjacent to the neighbouring houses increase its thickness and function as a filter and service space generating on one side a place for storage while on the other a "promenade" or circulation space. The void resting between both service spaces becomes the living area. The thickness of the walls construct interior facades in longitude and increase the perception of the space from a transversal view.

In the interior of the concrete house, L-shaped metal profiles sustain wooden panels which adapt to the topography and the openings of the pre-existing facade, organizing the space and conveying a warm atmosphere to the living spaces. The height differences between the floors generate crossing views and bring light to every level of the house, including the lower ground floor, thanks to the void carved in the upper storeys. The program of the house is fragmented, breaking the continuity of the horizontal plan in a way that Adolf Loos denominated "Raumplan".

Overall, the sequence of a house within a house goes from more urban materials to more domestic ones, building an empty joint between them which allows light and views to circulate through all spaces. The internal void converts itself in the public area of the house. This is the space in which all the views cross and relations are built through the "railing-furniture" delimitating it.



Josep Ferrando Architecture

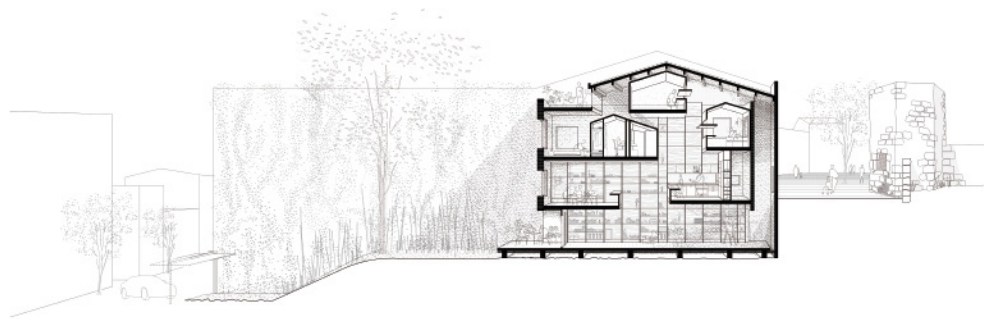


HOUSE IN SANT CUGAT. Architect's project description.

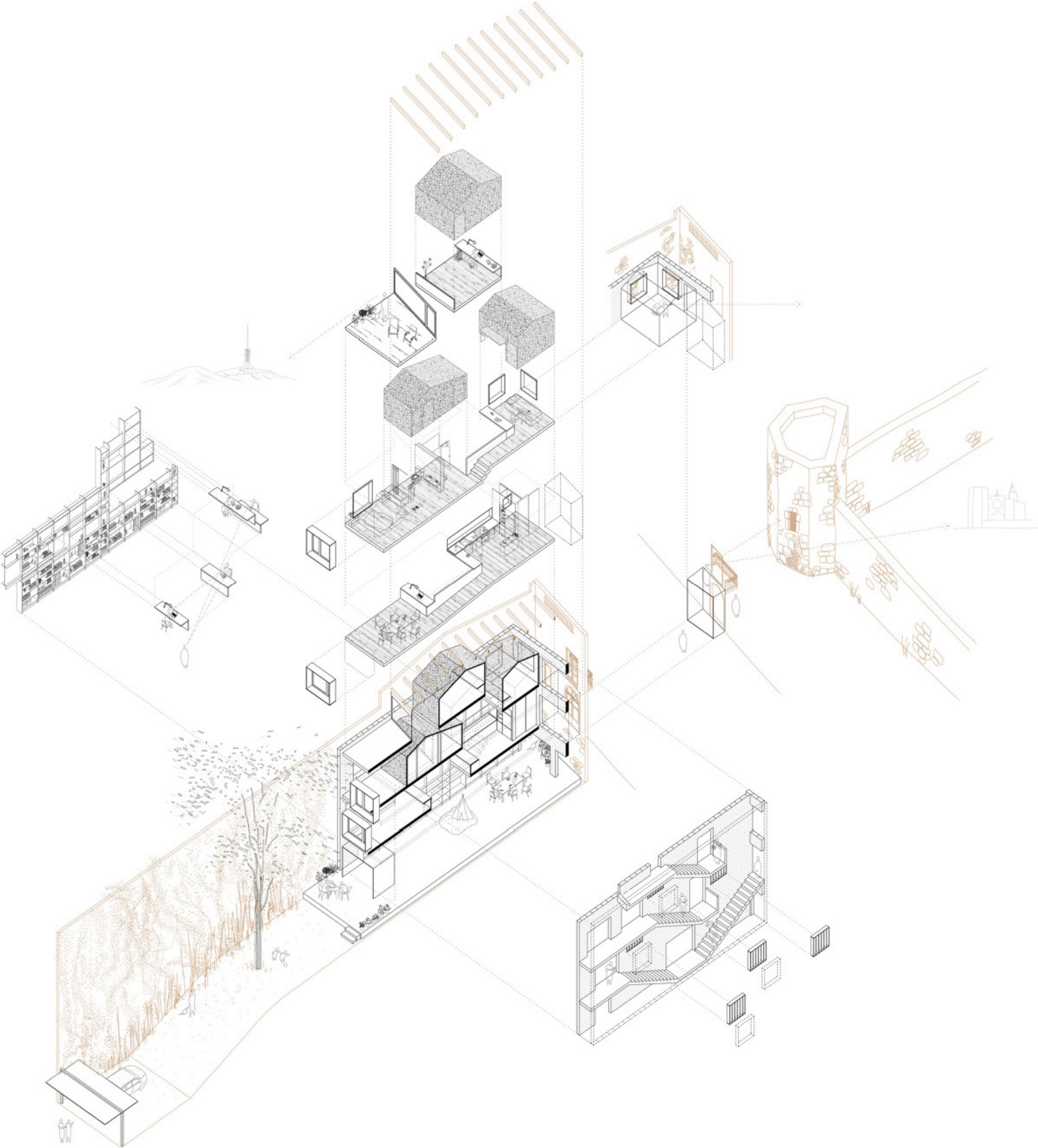
Located in the historical centre of Sant Cugat, a house between party walls is a project sensitive to the inhabitant and the city. A fragment that fits with the complex urban conditions: the Monastery, the cultural heritage of the street façade and the topography.

The party walls have an increased thickness to serve as storage and servant space, working as furniture and "promenade". The horizontal slabs are adapted to the topography and the program of the dwelling unit with a "raumplan" system. A unique construction gesture to build the entire home, as if it were a hollowed piece of wood, shaped through light, void and visuals to interior and exterior.

Josep Ferrando



**Josep
Ferrando
Architecture**



Josep Ferrando Architecture

CREDITS

Dates: 2011 - 2015

Site: C/ de la Torre 8, Sant Cugat (Barcelona)

Surface: 225 m²

Budget: 300.000 €

Client: Private. Miriam y Eduard

Arquitect

Josep Ferrando Bramona

jfb_arch@coac.net

Constructor

ROOM S.L.

www.roomsl.com

Quantity Surveyor: Toledo-Villarreal

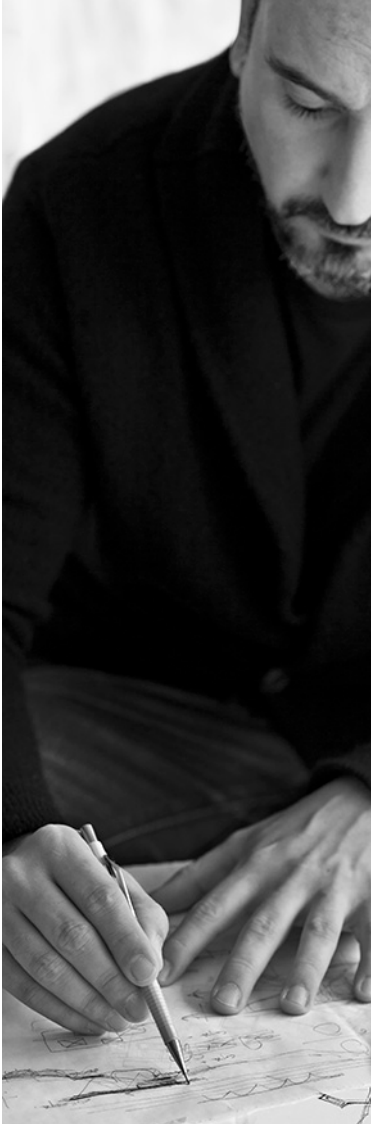
Structures: Josep Nel·lo

Collaborators: Marta Arias + Carol Castilla + Jordi Pérez + Félix Platero +
Goun Park + TaeGweon Kim + Adrià Orriols + Clara Vidal + Borja Rodríguez

Photos: Adrià Goula



Josep Ferrando Architecture



ABOUT JOSEP FERRANDO

Barcelona architect and director of Josep Ferrando Architecture combined design, construction and teaching since the beginning of his career as an architect. He is a design studio professor since 1998 in different schools such as ETSAB (Department of Architectural Design Course House and City), ETSALS Barcelona, University of Illinois Chicago (UIC), Instituto Europeo of Design (IED), the School of Design and Art (Eina). And he has been invited to international prestigious schools in which he has conducted workshops and semesters as Hochschule für Technik Zurich (HSZT), Escola da Cidade in Sao Paulo, Universidade Positivo (UNICENP) in Curitiba, and Universidad Torcuato di Tella in Buenos Aires.

Josep Ferrando. www.josepferrando.com



Copyright photos: Adrià Goula

Contact:

For more information, high resolution images, features and / or interviews contact:

Mària Suárez: maria@martapoch.com | 675 337 268
Marta Poch: info@martapoch.com | 656439653