

Marion Anderson Hall | UCLA Anderson School of Management Los Angeles



Status
opened January 2020

Use
academic building

Site
atop a parking structure due east of the existing Anderson School complex

Gross area
60,000 ft² / 5,600 m²

Client
University of California, Los Angeles

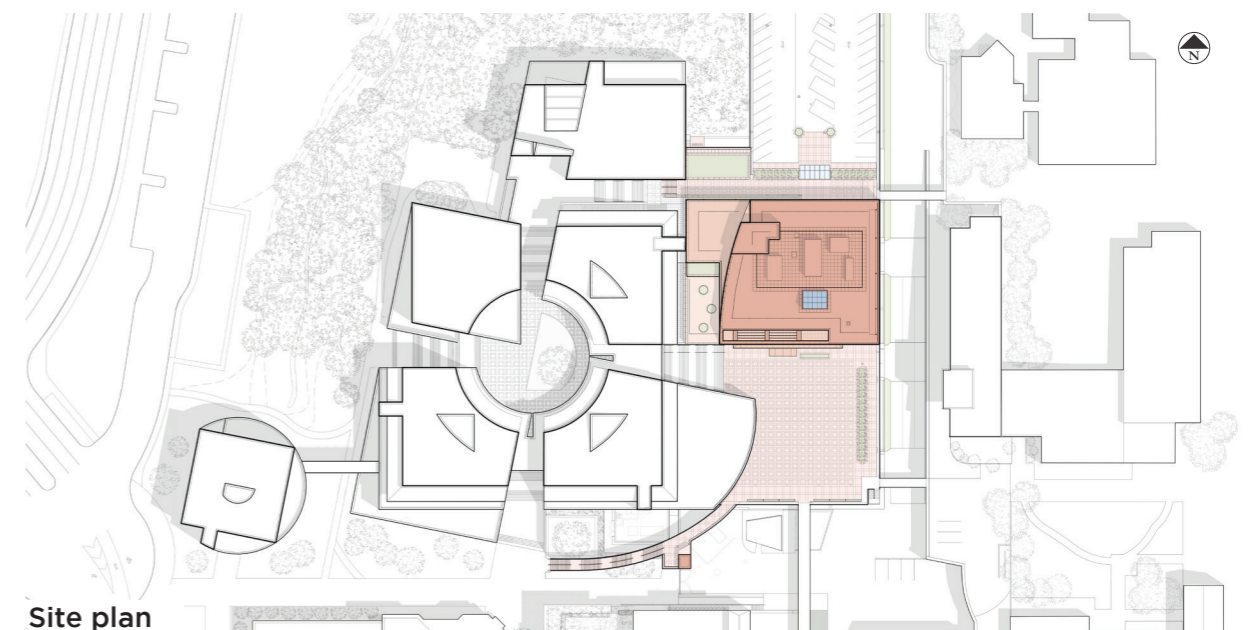
Services
campus planning, architecture, exterior envelope

Sustainability
LEED Platinum

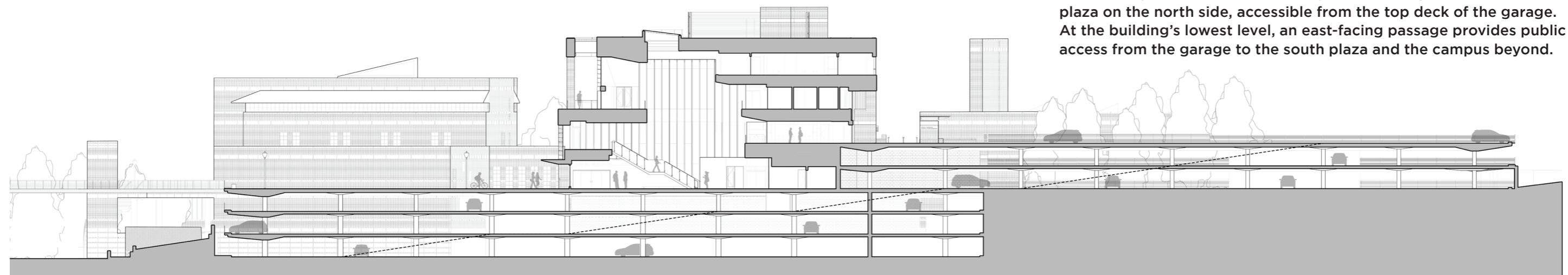
PEI COBB FREED & PARTNERS

This addition to the original Anderson School complex creates a bold campus presence that reimagines UCLA's traditional four-color blended brick and buff-colored cast-stone masonry banding. Transforming a condition long considered an unsightly barrier between the school and the core campus, the design sites the building atop an existing parking structure east of the original complex, framing a new pedestrian plaza and cascading grand stair to the south. The result is a new primary entrance to the school that also serves as a dramatic gateway to UCLA's North Campus.

Inside the building, state-of-the-art, acoustically optimized spaces are designed to support evolving models of business education. In addition to administrative offices, the dean's suite, and case-study and lecture classrooms, the facility includes a double-height event space and shaded terrace overlooking the plaza and a dynamic indoor-outdoor environment at the lowest public level.



Marion Anderson Hall | UCLA Anderson School of Management Los Angeles



Longitudinal section looking west

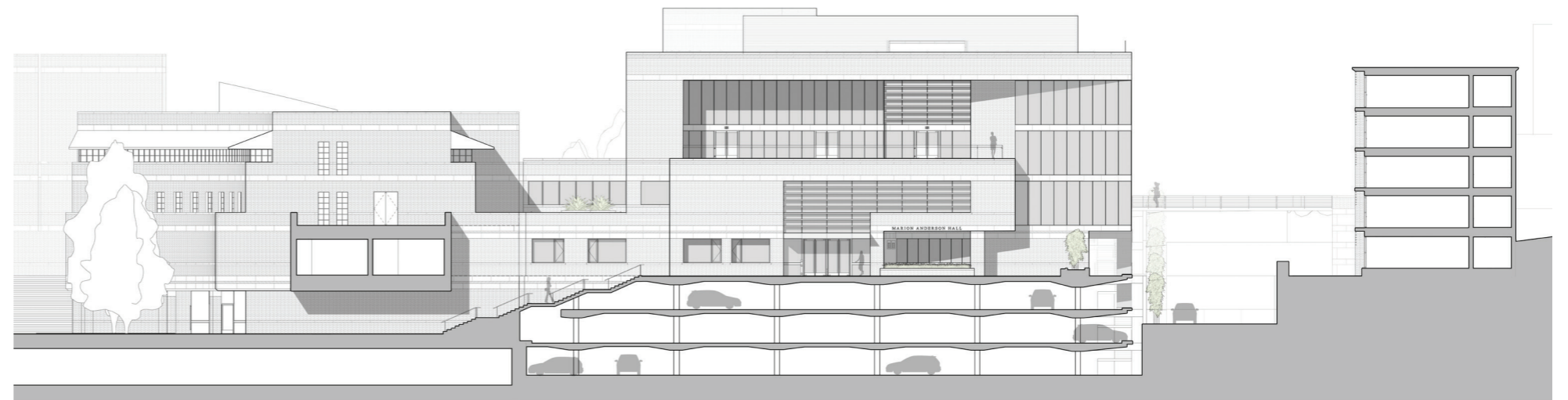
Constructed atop a parking structure edged by sloping Royce Drive, the building includes a second entry and landscaped vehicular arrival plaza on the north side, accessible from the top deck of the garage. At the building's lowest level, an east-facing passage provides public access from the garage to the south plaza and the campus beyond.

Marion Anderson Hall | UCLA Anderson School of Management Los Angeles



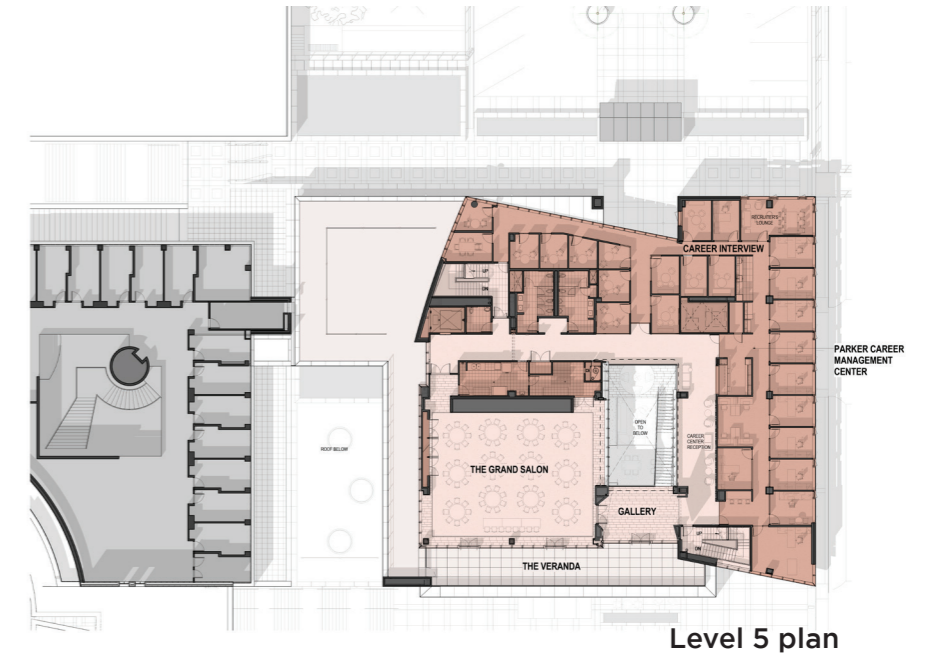
High-performance low-E glazing, operable windows in private offices, and green roofs that mediate between the new and existing structures are just a few of the many sustainable features that earned the building its LEED Platinum status. An array of shading devices animate the glazed facade, both veiling and framing the generous terrace and event space within while emphasizing the building's civic presence and welcoming demeanor.

Brick and buff masonry combine with painted aluminum and glass in a lively composition that connects fluidly with the existing Anderson School complex to the west.

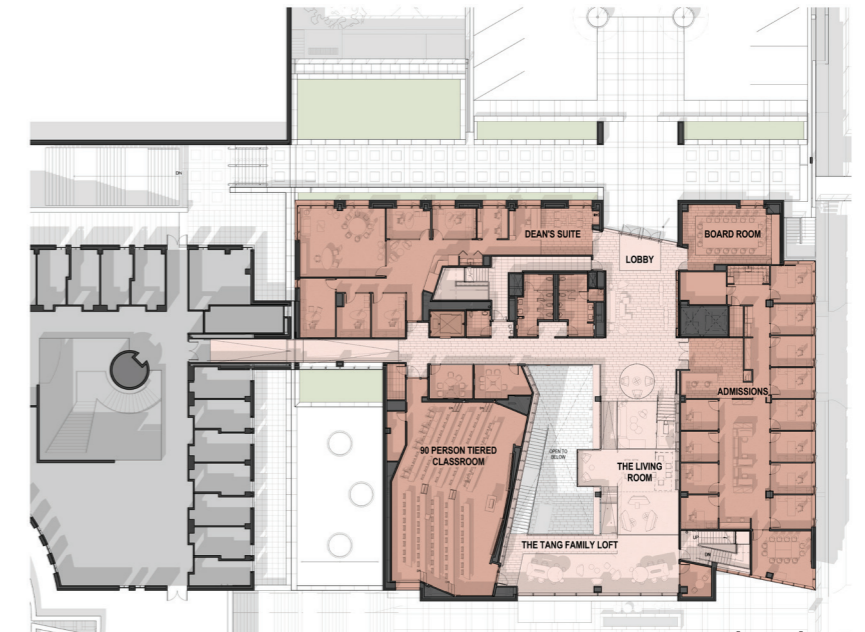


South elevation

Marion Anderson Hall | UCLA Anderson School of Management Los Angeles

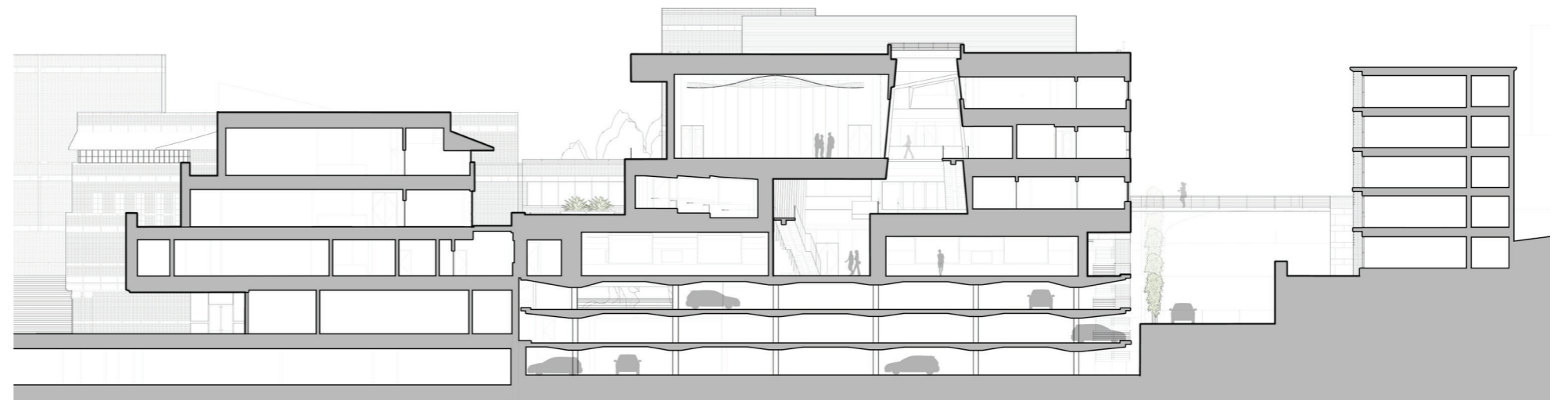


Level 5 plan



Level 4 plan

At the heart of the building, a five-story stepped atrium houses a rich array of interactive social and learning spaces. Bringing natural light to the interior while providing access to the event space and terrace overlooking the south plaza, the atrium's engaging stepped profile reflects the energy and forward-thinking spirit of the community the building serves.



Transverse section looking north