

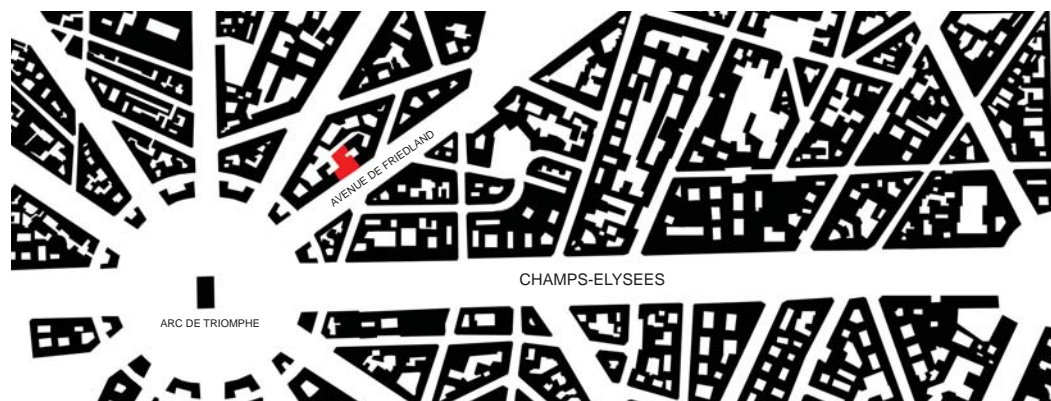
MANUELLE GAUTRAND ARCHITECTURE

NEWSLETTER N° 25 - **SPECIAL «ORIGAMI»**

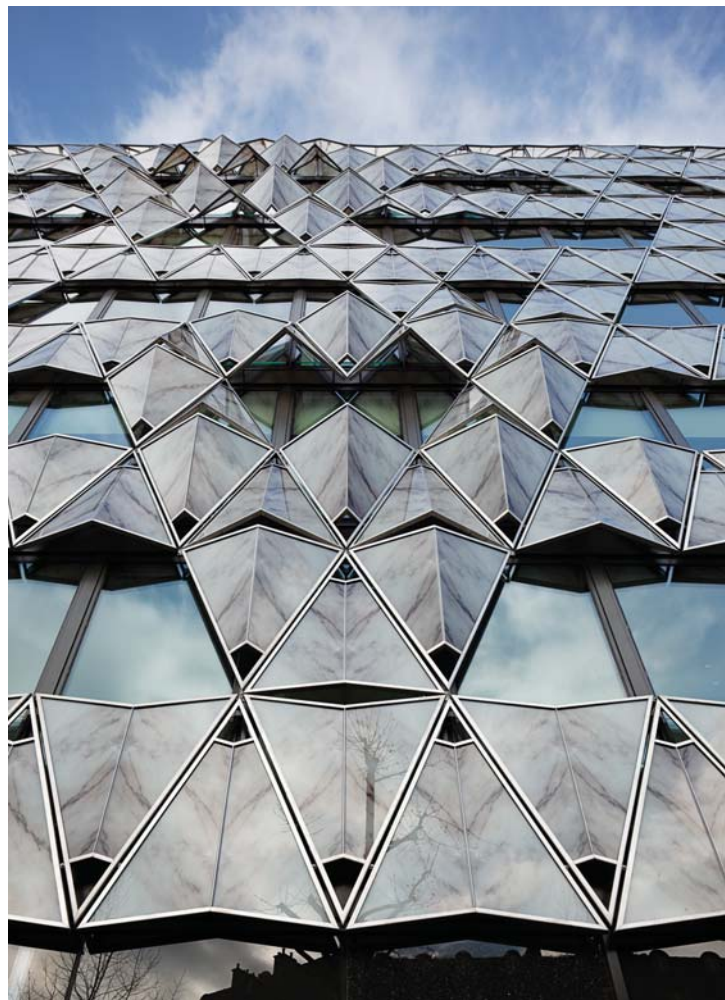
NOVEMBER 2011

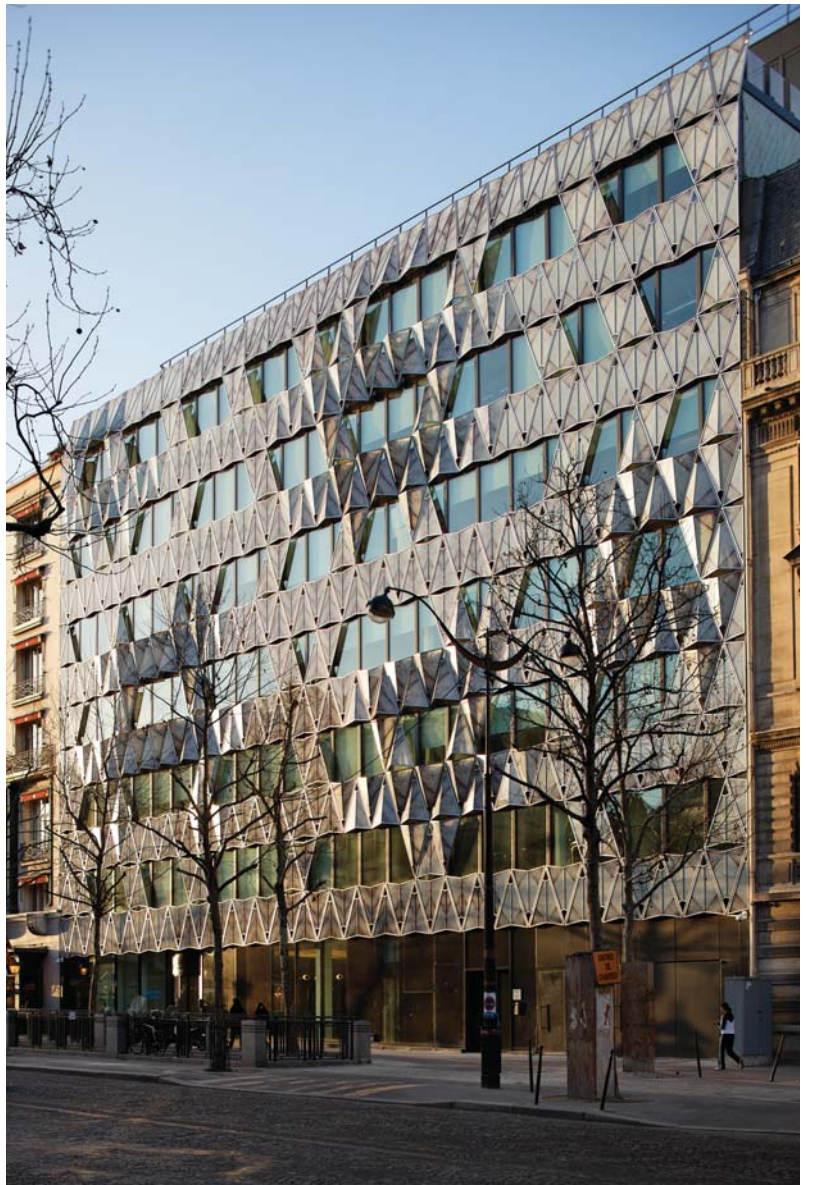
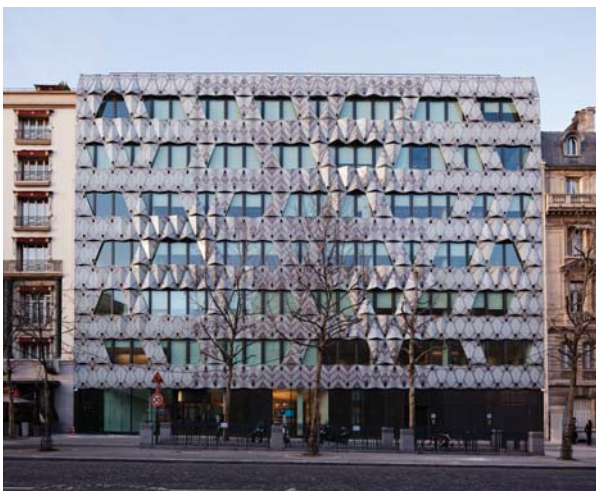
We are pleased to announce that the «Origami» building situated at the 36 Friedland avenue in Paris is now delivered and occupied.

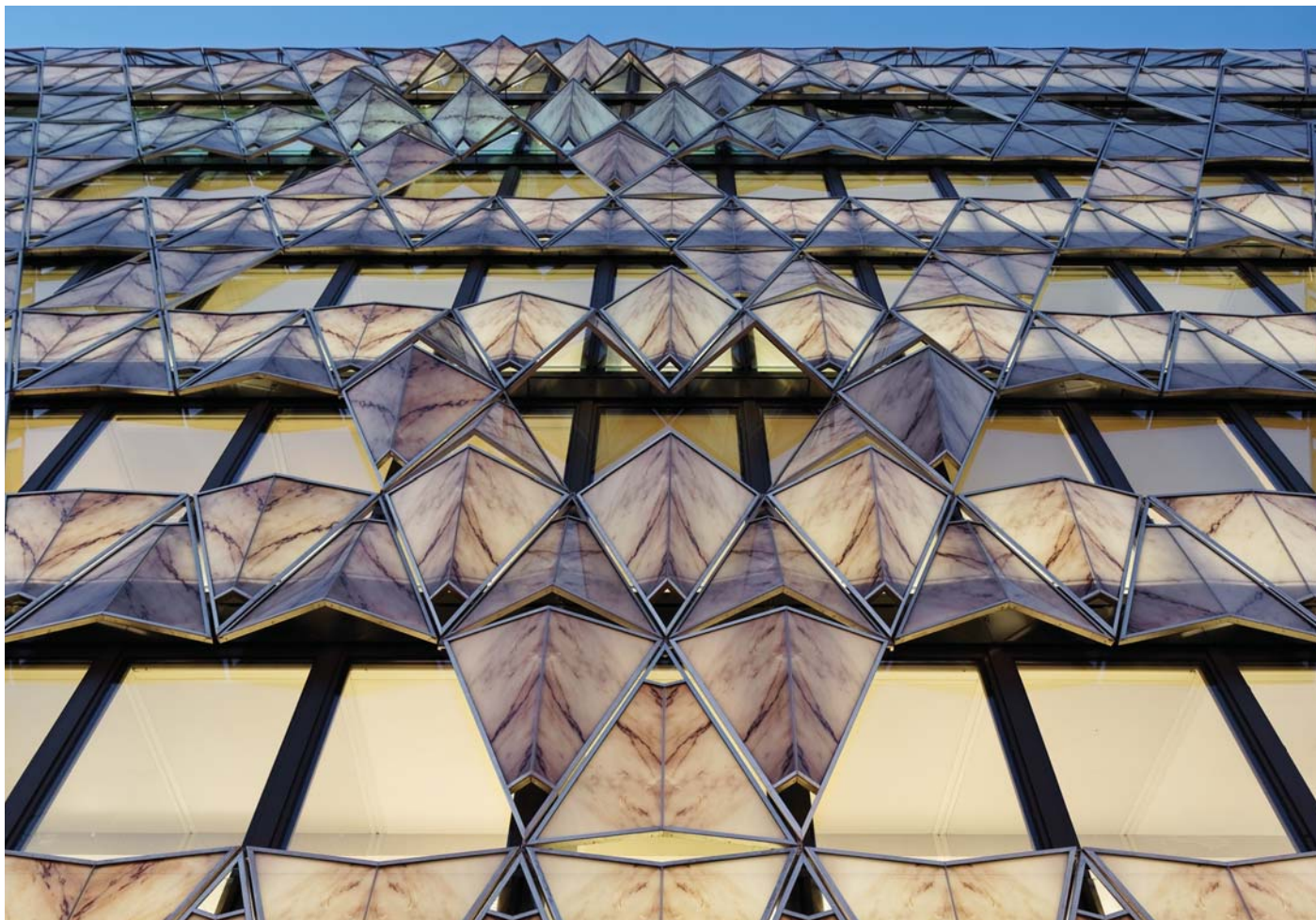
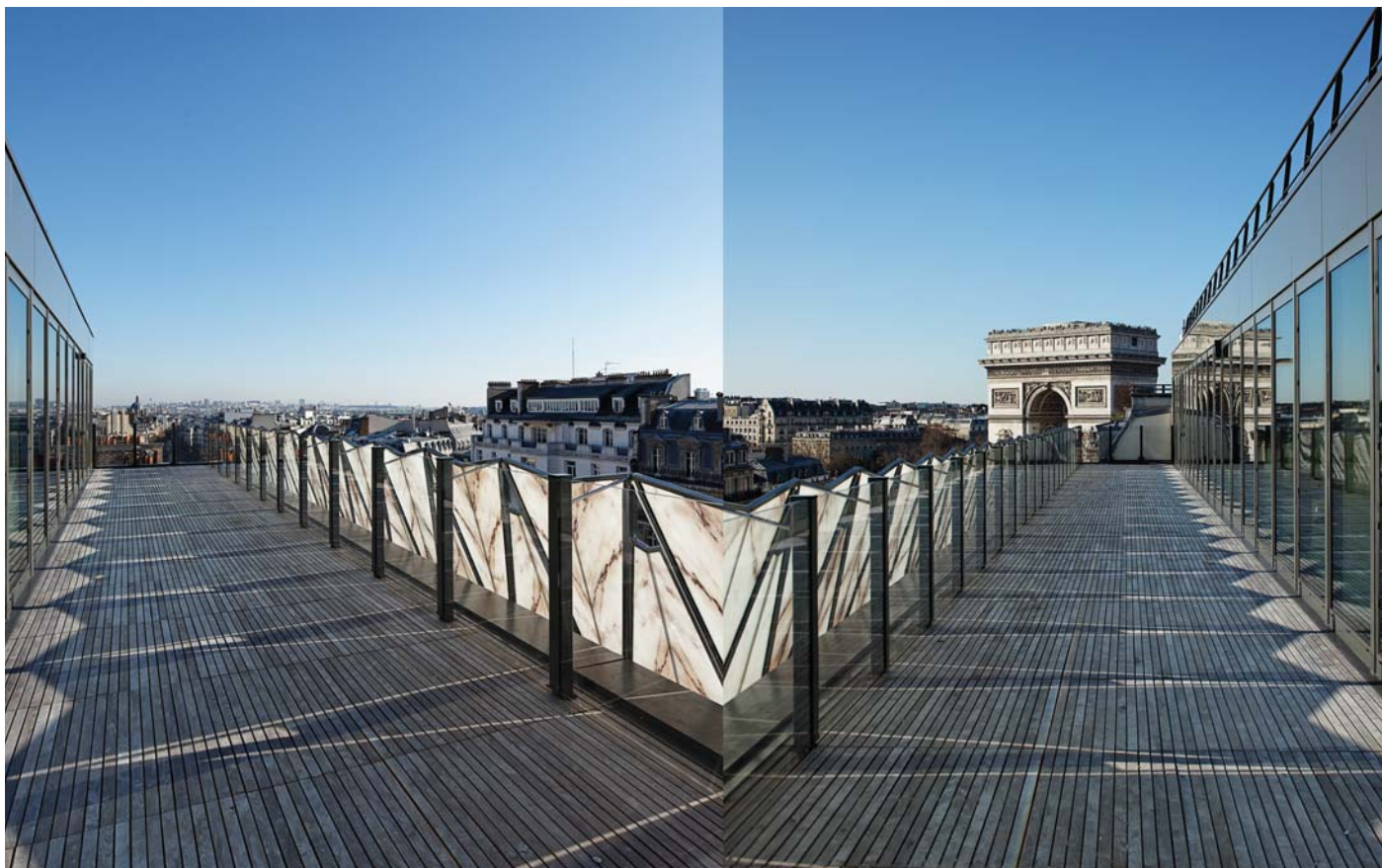
Developed for Gecina, this 6.000 sqm office building is situated within 200 metres from the Arc de Triomphe and now hosts the French headquarters of the Barclays Capital Bank. The building was designed and developed with a strong sustainability approach. The façade is dressed in a double skin of glass and, in an origami manner, with its pleated marble pattern it forms a sun-screen in front of a curtain wall. It gives a desired mineral touch which thus contributes to the building's integration into the neighborhood.



Client: GECINA
Photos: VINCENT FILLON







CONTACT MANUELLE GAUTRAND ARCHITECTURE
36, bd de la Bastille, F-75012 Paris
MAIL: contact-com@manuelle-gautrand.com
TEL: 00 33 156 950 646