



PROJECT SUBMISSION FORM

Main Information

Project Name

Office Name

Office Website

Social Media Accounts

Contact e-mail

Firm Location

Completion Year

Gross Built Area m² ft²

Project Location

Program

Lead Architects

Lead Architects e-mail

A House / REM'A



Photographer 1

Photo Credits

Photographer's website

Photographer's e-mail

Video link

HOUSES - GUIMARÃES, PORTUGAL

-  Architects: REM'A
-  Area: 450 m²
-  Year: 2019
-  Photographs: Ivo Tavares Studio
-  Manufacturers: Accoya, Lunawood, POLYREY, B&G Aluminium

[MORE SPECS](#)

Architects In Charge: Romeu Ribeiro, José Pedro Marques

Collaborator: André Novais

Engineering: Fortunato & Paulo, Engenharia

Construction: Construções Bairro do Sol LDA

Photographer 2

Photo Credits

Photographer's website

Photographer's e-mail

Video link

Materials

Please pick the 3 most representative materials of the project.

Construction System

Finishes



PROJECT SUBMISSION FORM

Products and materials

We'd like to know about:

Finishes, Wallcovering / Cladding Construction Materials, Equipment, MEP & HVAC, Lighting, Doors and Partitions, Bathrooms, Facade Systems, Windows, Architectural Software, and anything else you may think of!

Brand	Product Name / Code	Brand Website

By knowing which specific materials and products worked for you, we can recommend them to the architectural community!



MEDIA GUIDELINES

Photos

File format: JPG, RGB, minimum 2880 px width. At least 15 images.

Include interior and exterior photographs (mandatory except for interior or landscaping projects)

We require daylight professional architectural photographs, taken with specialized equipment and postproduction (perspective correction, white balance, etc) Select photos that show the best of the project's context, volume, different spaces and materials used.

Do's:



Remember to:



Make sure all photos have perspective correction

Include only daylight photos

Keep away from overcrowded photographs

Avoid excessive post production that might give an unreal look



MEDIA GUIDELINES

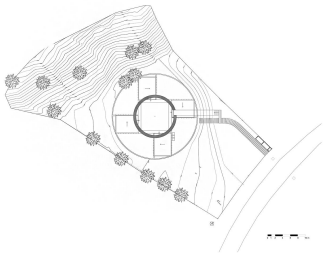
Drawings

File format: JPG, RGB, minimum 2880 px width

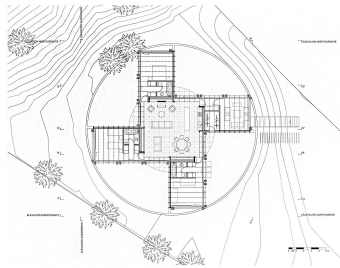
Include all the graphic material available to help understand the project: Site Plan, Floor Plans, Sections, Elevations, Axonometrics, Constructive Details, Diagrams

Plans must be grayscale. Do not include more than one plan in the same JPG file

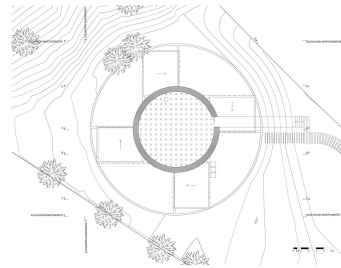
Do's:



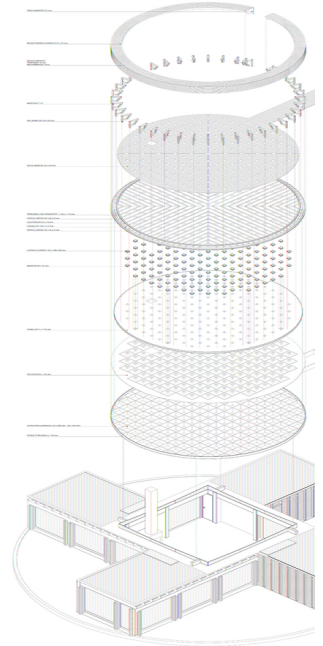
Site Plan



First Floor Plan



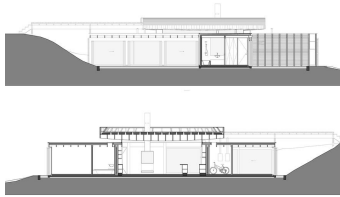
Roof Floor Plan



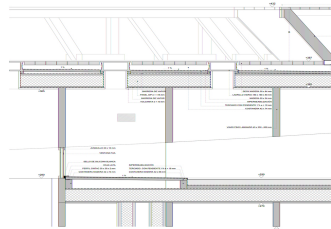
Axonometric



Elevations

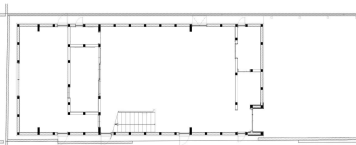
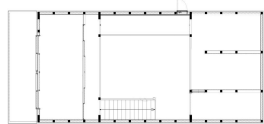


Sections

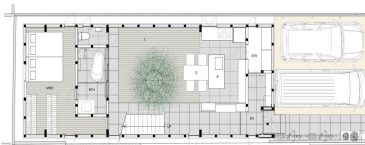
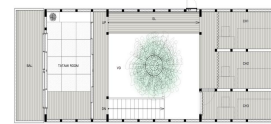


Constructive Detail

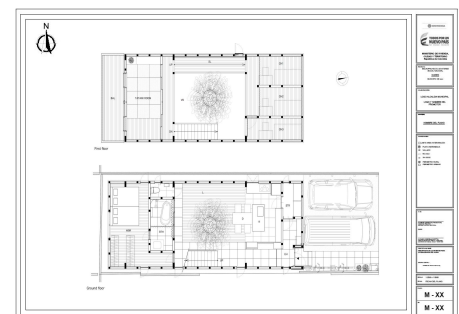
Remember to:



Include information on the spaces and their use



Avoid colored plans



Do not include labels or borders



FAQ

Thank you for your interest in being part of ArchDaily! Our curators strive to deliver the best content to the millions of architects who visit our site each month, further expanding our large database of projects, news, images, drawings, tools and products. With this information, you are contributing to an architectural culture that provides inspiration, knowledge and tools to those in charge of designing our built environment.

Do all projects get published?

Every project goes through a curatorial process first. We have a team of curators that select the most innovative and outstanding projects to be published on the site. Everything you find on ArchDaily has been specifically selected by a hardworking team that highlights the best projects out there, making our platform trustworthy and reliable for anyone searching for tools and inspiration.

What is ArchDaily looking for in each project?

Given the amount of projects that we receive, we have to select and feature those that provide knowledge, tools, and inspiration to our users. Therefore, we look for interesting and innovative solutions in terms of constructive processes, programmatic proposals, architectural context, materials or structure.

How do I submit my project?

In our [Submit a Project](#) page you will be able to download a [folder](#) containing our guidelines and documents. Please, add all the required files and complete the information. Upload the completed folder to Google Drive, Dropbox or similar server.

Once everything is ready, send us the link through [Submit a Project](#) or email us at projects@archdaily.com. Most importantly, make sure the link is public or that we have permission to view and download!

What do I have to submit?

In this Form you will find the whole set of requirements. In order for our curators to fully understand the publication and make a decision, it is important that you include all the information required. At least:

- Information and Project Description: Complete the PDF Form (pages 1 and 2)
- Photographs: at least 15 images, JPG files, 72 dpi, color, 2880px width. If you have more, feel free to send them. This will give us more options to choose from and showcase your project to its fullest potential.
- Drawings: JPG files, 72 dpi, grayscale, 2880px width. In order to have complete and exhaustive publications, this is a mandatory requirement.

What happens once I submit my project?

Once you complete the submission process, you will receive an automatic email with a case number. Projects are then reviewed by our curators, who discuss projects among each other. Then, our team will get back to you, in up to 72 working hours, with the decision. In case we don't, please feel free to follow-up at projects@archdaily.com.



FAQ

How long will it take until the project gets published?

If your submission is selected for publication, the project will be online within a maximum of 15 days, after you receive the confirmation email. As soon as it is online, we will send an email with the link so you can view your project.

Does publishing at ArchDaily have a cost?

No, ArchDaily is a free online platform that does its best to provide collaborative and democratic access to architectural knowledge. For this reason, we do not charge nor pay for the publication of built projects.

Do I need permission to submit my own work?

Before submitting, please let other authors, photographers and owners involved, know that the project will be published at ArchDaily, and make sure everyone is on the same page. From our end, we give credits accordingly, so please include all the information regarding the design team, collaborators, consultants, and photographers. At ArchDaily, we are not able to pay for photography but we always make sure credits, links and full copyright details are properly shown.

Do I get to decide the layout/order of the graphic material?

We have a specialized team with a vast knowledge of our users' and internet behavior. You can be sure that our curators will organize and present the information in the most appropriate way to get the most out of each and every project. As we do not make major edits to the text, please make sure to send a final and proofread version.

Is it possible to have a preview before publishing the project?

Unfortunately, we do not provide previews of the publication. Don't worry, the highly experienced ArchDaily team will show the project's best potential.

Can I make corrections once the project is published?

We all make mistakes. In case of any error, let us know at projects@archdaily.com and we'll get back to you once it's fixed. Due to the large amount of submissions we receive, we can only make one correction if necessary, so please double check the texts for spelling mistakes or missing credits before submitting the project.

Will my project be featured on ArchDaily's Social Media channels?

Unfortunately, not all projects are featured on Facebook nor Instagram. We have a Social Media Team in charge of selecting which projects and articles will be featured across our platforms. Therefore, we cannot ensure that they will choose your project. Finally, please remember that by submitting material to publish on ArchDaily you are authorizing its use on ArchDaily, Architonic, and their digital channels.