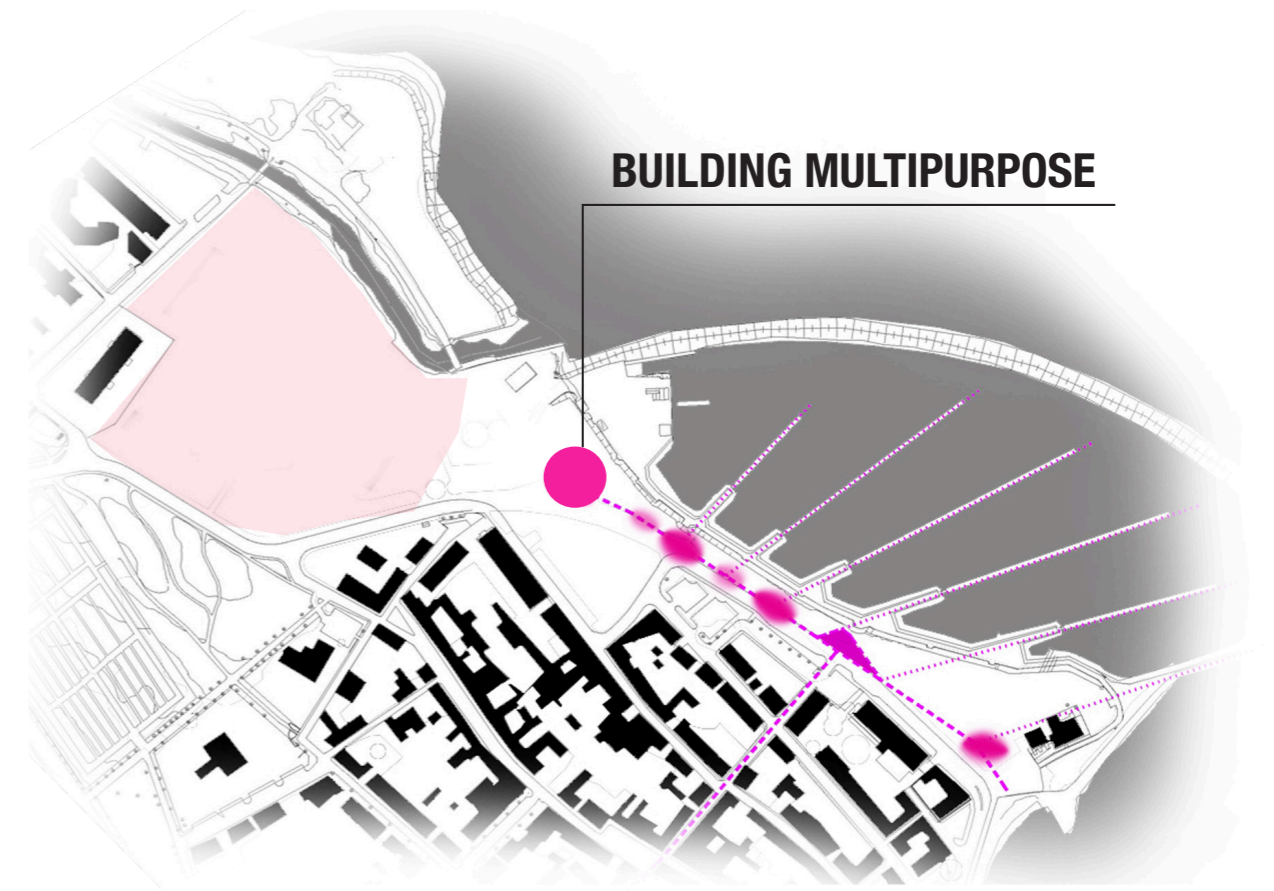
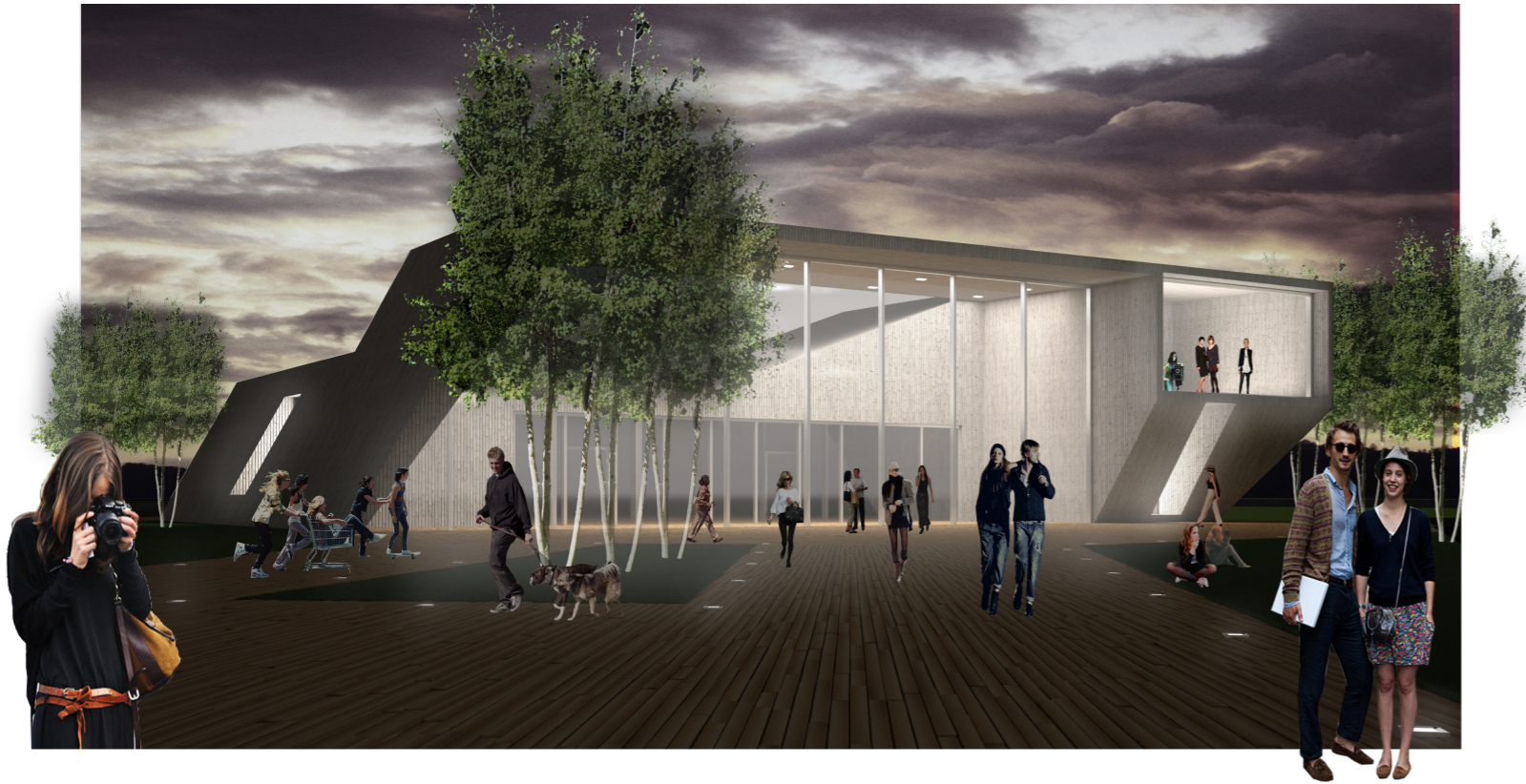


## space between people and architecture



The multipurpose building becomes a land mark for the project and a point of union between the residential area and the waterfront area. In fact arises in a barycentric point in respect to the planning system. It has limited dimension because of the goal to have architecture at human scale. It has a close-knit and monolithic shape with faces that frame attractive views. We have chosen wooden material for the outdoor facade like for th outdoor promenade tha is the main spine of the entire project. The big central ceiling space set up like as a covered square for people meeting and aggregation year round. The part on the sea has a glass ceiling facade that protect the interior space from the atmospheric agents and at the same time to store the heat of sunshine rays. Into the building the funcions are many: cafè, exibition hall, panoramic hall, square, winter covered square, restaurant and shops.

