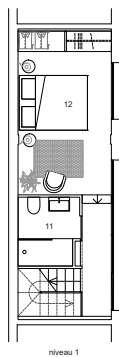
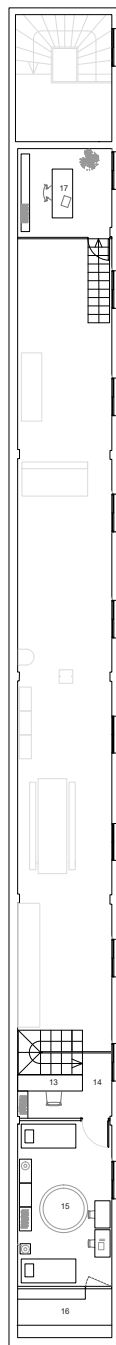
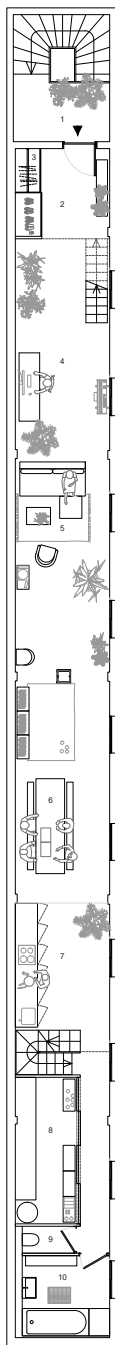


- 1.palier
- 2.entree principale
- 3.placard d'entree
- 4.bureaux
- 5.salon
- 6.salle à manger
- 7.cuisine
- 8.buanderie
- 9.sanitaire
- 10.salle de bain
- 11.douche et wc
- 12.chambre
- 13.petit bureau
- 14.dégagement
- 15.chambre
- 16.rangement
- 17.bureau ou chambre invité



0 1.25 2.5 5 m



Plan des trois niveaux / Plan of the three levels

Loft en triplex / Triplex loft