

MAYU architects+

# office profile

MAYU architects+, founded in 1999 as Malone Chang Architects and reorganized in 2010, is an interdisciplinary practice based in Kaohsiung, Taiwan. The scope of MAYU 's works spans from large-scale civic projects to small scale ones. The studio recognizes the importance of teamwork in the creation of architecture, while maintaining the individuality and artistry of each project. Therefore an architectural approach balancing the interdisciplinary cooperation and artistic inspiration is applied.

The studio's conception to a project avoids presumption of fixed style and dogmatism, in favor of a dynamic and organic process. The dialogue between site, context, programs, time, materials, users, and clients constantly contributes to the forming of architecture. Organizational logic of physical buildings, holistic experience of spaces, and the changing characteristics of materials are priorities of the studio.

Recently completed and on-going projects include: Da-Dong Arts Center, Kaohsiung American School, Tainan Main Library, Tainan Yuwen Library, ITRI Research Building, Tung-Men Holiness Church, and Taichung Flora Exposition Hall among others.

MAYU is made up of a highly multidisciplinary staff of over 60 creative professionals. The team includes architects, engineers, interior designers, urban planners, landscape architects and LEED Accredited Professionals.

# malone chang

## partner



### Membership

NAAROC (The National Architects Association, Taiwan)

Malone Chang graduated in 1979 at the Architectural Department of National Cheng-Kung University, and received his Master's degree from University of Illinois, Urbana-Champaign in 1983. While collaborating with various architects, he received Doctorate of Philosophy in Architecture from NCKU in 1999, and founded Malone Chang Architects in the same year. In 2010, together with Yu-lin Chen, he founded MAYU architects+, an interdisciplinary practice based in Kaohsiung, Taiwan.

Malone has been teaching in various institutions for more than 25 years and is currently visiting professor at National Cheng-Kung University and Shu-Te University. He has been invited to several international workshops, review panels and lectures.

Malone received the lifetime achievement award of the R.O.C. Outstanding Architect from the Ministry of the Interior in 2009 for his planning and design contribution.

**Education**

- 1993 - 1999 National Cheng-Kung University, Tainan; PhD in Architecture
- 1981 - 1983 University of Illinois Urbana-Champaign, Champaign, IL; Master of Architecture
- 1975 - 1979 National Cheng-Kung University, Tainan; Bachelor of Science in Architecture

**Professional Experience**

- Since 2010 Founding partner of MAYU architects+, Kaohsiung
- 1999 Founding partner of Malone Chang Architects, Kaohsiung

**Academic**

- 2016 - 2017 Architect-in-residence, National Chen-Kung Universtiy, Tainan
- since 2016 Adjunct Professor, National Cheng-Kung University, Tainan
- since 2010 Visiting Design Critic, Shu-Te University, Kaohsiung
- 1984 -2009 Assistant Professor, National Cheng-Kung University, Tainan

**Professional Activities**

- 2014 - 2015 Member of KUAS Campus Planning Committee
- 2014 - 2015 Head of Taitung County Environment and Landscape General Consultants
- 2013 Jury Member of Taiwan Architecture Award
- 2004 - 2005 Member of Kaohsiung City Urban Design Committee
- 2004 Deputy Chairman of Kaohsiung City Landscape General Consultants
- 2002 Member of Remodeling Review Committee, Tainan City Library
- 2002 Member of Remodeling Review Committee, Chiayi County Library
- 2001 - 2003 Member of Sustainability Advisory Committee, Taipei City Main Library
- 1986 - 1988 Member of NCKU Campus Planning Committee

**Personal Awards**

- 2009 The 10<sup>th</sup> R.O.C. Outstanding Architect Award

# yu-lin chen

## partner



### Membership

NAAROC (The National Architects Association, Taiwan)

NCARB (National Council of Architectural Registration Boards, USA)

Yu-lin Chen received his professional degree from Harvard University Graduate School of Design (Master of Architecture with distinction) in 2002, and founded Yu-lin Chen Architects in 2006. In 2010, together with Malone Chang, he founded MAYU architects+, an interdisciplinary practice based in Kaohsiung, Taiwan.

In Harvard, Yu-lin was awarded The Araldo Cossutta Annual Prize for Design Excellence in 2000. His graduate thesis project proposed a dialectic Urban-Architecture strategy for contemporary urban conditions and was nominated for the Harvard Thesis Prize. Yu-lin worked for Francisco Mangado Architects (Pamplona, Spain) on the competition team of Zaragoza Olympic Village and Pamplona San Fermins Museum; and for William Rawn Associate, Architects (Boston, USA) on the design team of Williams College '62 Center for Theatre and Dance, and Loomis Chaffee School Performing Arts Center.

Yu-lin is visiting design critic at National Cheng-Kung University since 2006 and is invited to several workshops, review panels and lectures. He is registered architect both in Taiwan and in Massachusetts, USA.

**Education**

- 1998 – 2002 Harvard University Graduate School of Design, Cambridge, MA; Master of Architecture with distinction
- 1991 – 1995 National Cheng-Kung University, Tainan; Bachelor of Science in Architecture

**Professional Experience**

- since 2010 Founding partner of MAYU architects+, Kaohsiung
- 2006 Founding partner of Yu-lin Chen Architects, Cambridge, MA
- 2002 – 2006 Designer, William Rawn Associates, Architects, Inc., Boston
- 2001 Intern, Francisco Mangado Architects, Pamplona

**Academic**

- since 2015 Thesis Instructor, National Cheng-Kung University, Tainan
- 2006 - 2015 Visiting Design Critic, National Cheng-Kung University, Tainan

**Professional Activities**

- 2015 Member of Remodeling Review Committee, Tainan City Library
- 2006 – 2008 Member of NCKU Campus Planning Committee

**Personal Awards**

- 2000 Core Prize: The Araldo Cossutta Annual Prize for Design Excellence, Harvard GSD

## -第十四屆公共工程金質獎特優

### The 14th Public Construction Commission Golden Quality Award (Outstanding Award) (2014)

Kaohsiung Main Public Library awarded the 14th Public Construction Commission Golden Quality Award (Outstanding Award). We served as PCM for this project.

## -台北設計獎-金獎

### Taipei International Design Award (2013) - Golden Award

FLOATING WALL-Henchun Footbridge received Golden Award at the Taipei International Design Award 2013 in the category of Public Space Design organized by Taipei City Government.

## -2013 第二屆高雄厝綠建築大獎: [高雄厝綠建築大獎] 及 [高雄厝創意綠建築大獎-雨水貯集設施及再利用組] Kaohsiung Dwelling Green Building Award (2013): [Public Building Category] and [Rain Water Retaining and Reuse Category]

NUK College of Humanities and Social Sciences awarded Kaohsiung Dwelling Green Building Award in two categories organized by Kaohsiung City Government.

## -台灣建築佳作獎

### Taiwan Architecture Merit Award (2012)

Dadong Art Center awarded Taiwan Architecture Merit Award organized by Taiwan Architect Magazine.

## -台灣混凝土工程優良獎

### Taiwan Concrete Award (2012)

Dadong Art Center awarded Taiwan Concrete Award organized by Taiwan Concrete Institute.

## -國際宜居城市大獎

### The LivCom Awards

(The International Awards for Liveable Communities organized by United Nations Environment Programme and non-profit UK The LivCom Management Company)

Silver Prize for Built Project (2013): Kaixuan Pedestrian Bridge

Bronze Prize for Built Project (2013): Hong-Mao-Gang Cultural Park

Silver Prize for built Project (2012): Dadong Art Center

Gold Prize for built Project (2011): Tsuei-Hua Pedestrian Bridge

## -第 10 屆中華民國傑出建築師獎 - 張瑪龍建築師

### The 10th R.O.C. Outstanding Architect Award (2009)

Malone Chang architect of MAYU architects+ awarded the 10th R.O.C. Outstanding Architect Award organized by the Construction and Planning Agency Ministry of the Interior, Taiwan in 2009.

## -建築園冶獎

### Architectural Landscape Awards

Kaohsiung City Hall Fongshan Office 2014

Dadong Art Center - 2012

Tsuei-Hua Pedestrian Bridge - 2011  
Happy River Waterfront Renovation - 2011  
Da-Ping-Ding Tropical Botanical Garden - 2011  
Love River Waterfront Renovation - 2010  
Second Canal Station Renovation -2008  
Heart of Love River - 2008  
Jhongyi Elementary School - 2008  
Madou Elementary School -2008  
Sewerage Systems Admin. Center - 2007  
Dagou British Consulate Residence - 2005  
Tainan Confucius Temple Historical Area - 2005  
Urban stage: Waterfront Community - 2004

**-國家卓越建設獎-最佳規畫設計類卓越獎**

**FIABCI-Taiwan Real Estate Excellence Award (2010)**

Tsuei-Hua Pedestrian Bridge awarded Excellence Award from FIABCI-Taiwan Real Estate Excellence Award authorized by FIABCI and sponsored by the Taiwan branch.

**-國家卓越建設獎-最佳規畫設計類卓越獎**

**FIABCI-Taiwan Real Estate Excellence Award (2009)**

Dadong Art Center awarded Excellence Award from FIABCI-Taiwan Real Estate Excellence Award.

**-國家卓越建設獎-優良環境文化類卓越獎**

**FIABCI-Taiwan Real Estate Excellence Award (2008)**

Heart of Love River awarded Excellence Award from FIABCI-Taiwan Real Estate Excellence Award.

**-全球卓越建設獎-環境類冠軍**

**FIABCI Prix d'Excellence Award - Environmental Category Winner (2008)**

Heart of Love River was the winner of FIABCI Prix d'Excellence Award Environmental Category. The award is organized by FIABCI.

**-綠建築貢獻獎**

**Sustainable Architecture Award (2005)**

Jhongyi Elementary School awarded Sustainable Architecture Award sponsored by Ministry of the Interior, Taiwan.

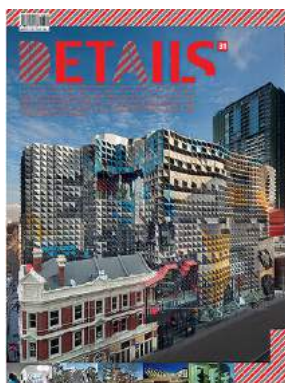
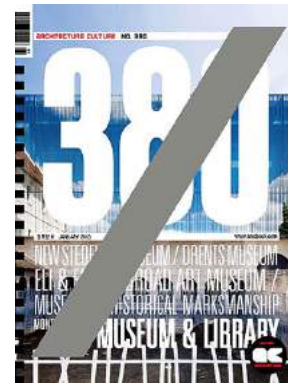
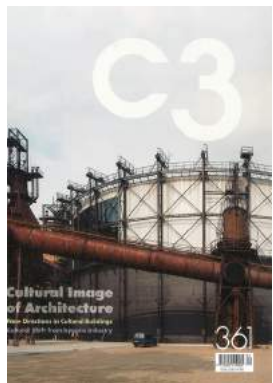


## exhibitions

- 2016** Tectonic Becoming, Da-dong Arts Center, Kaohsiung  
Letters to the Mayor, URS127 Gallery, Taipei  
Letters to the Mayor, MOT Lab, Taichung  
2016 Southern Architecture Triennial, Tainan Cultural Center, Tainan
- 2013** Kaohsiung Design Festival, Pier 2, Kaohsiung
- 2012** NCKU 6x10 Exhibition, NCKU Art Center, Tainan  
Tectonic Becoming, URS21 Chung Shan Creative Hub, Taipei  
2012 Southern Architecture Triennial, Tainan Cultural Center, Tainan
- 2010** Tectonic Becoming, CMP Block, Taichung

## selected publications

- 2016** Architectural Material & Detail Structure [UK]  
Taiwan Architecture 06/2016 [Taiwan]  
Taiwan Architect Magazine 04/2016, P. 44-49 and P. 110-115 [Taiwan]
- 2015** Archdaily.com 09/03/2015 [Chile]  
Taiwan Architecture 04/2015, P. 56-65 [Taiwan]  
C3 Issue 361, P. 88-99 [Korea]  
Green Architecture in China, P. 208-221 and P. 206-267 [China]  
A&C Detail Architectural Elements 9, P. 164-167 [Korea]  
Book Boom Magazine 03/2015, P. 48-51 [Taiwan]
- 2014** Alighting Magazine Issue 34 [China]
- 2013** China Airline Dynasty Magazine 11/2013 [Taiwan]  
China Airline Dynasty Magazine 01/2013 [Taiwan]  
Taiwan Architecture 04/2013, P. 66-75 [Taiwan]  
Monocle Issue 61, P. 79 [United Kingdom]  
Taiwan Architect Magazine 02/2013, P. 54-59 [Taiwan]  
Architecture Culture Issue 380 [Korea]  
Detail Issue 31 [Korea]
- 2012** Archdaily.com Selected Works 11/12/2012 [Chile]  
Archdaily.com Selected Works 11/29/2012 [Chile]  
Dezeen.com 10/26/2012 [United Kingdom]  
MARK Magazine Issue 40, P.50-51 [Netherlands]  
Tectonic Becoming 2012 Exhibition Catalog [Taiwan]  
Taiwan Architect Magazine 06/2012, P. 50-57 [Taiwan]
- 2011** Taiwan Architect Magazine 10/2011, P. 60-65 [Taiwan]
- 2010** Archdaily.com 12/24/2010 [Chile]  
Tectonic Becoming 2010 Exhibition Catalog [Taiwan]







## selected projects

2016



### National Cheng-Kung University Smart Campus 成大智慧校園計畫

**Brief:** Integrated, interdisciplinary network in campus

**Client:** National Cheng-Kung University

**Size:** N/A

**Status:** Ongoing



### Tainan Main Public Library 台南市立圖書館總館

**Brief:** Public library with special collections, multimedia rooms, children's area, event spaces, café, conference hall, 300-seat auditorium, and archive

**Client:** Cultural Affairs Bureau, Tainan City Government, Taiwan

**Size:** 35000 sq m

**Status:** Ongoing

2015



### Integrated Long-term Care Center 高齡整合長期照護中心

**Brief:** 142 nursing home units, 236 mental health home units, Chinese medicine clinic, lecture halls, and offices

**Client:** Kaohsiung Municipal Min-Sheng Hospital, Kaohsiung City Government

**Size:** 22514 sq m

**Status:** Ongoing



### Taichung World Flora Expo Main Exhibition Hall 臺中世界花卉博覽會花艷館

**Brief:** Main exhibition hall, sub-tropical greenhouse, restaurants, visitor's center, and amphitheater

**Client:** Taichung City Government

**Size:** 12000 sq m

**Status:** Ongoing



### ITRI Research Building

**Brief:** Open laboratories, offices, lecture hall, exhibition spaces, classrooms, lounges, and cleanroom

**Client:** Industrial Technology Research Institute

**Size:** 22178 sq m

**Status:** Ongoing



### Library and Auditorium Building, National Tainan Girls' Senior High School

**Brief:** Library, 400-seat auditorium, faculty offices, exhibition space

**Client:** ITRI Research Building

**Size:** 6462 sq m

**Status:** Ongoing

2014



**MIRDC Research Building** 金屬中心傳統產業創新研發中心

**Brief:** Laboratories, flexible research offices, 300-seat multi-functional hall, 60-seat meeting room, and exhibition space

**Client:** Metal Industries Research & Development Center

**Size:** 8532 sq m

**Status:** Ongoing



**National Chung Hsing University Student Dormitory** 中興大學學生宿舍

**Brief:** 1216-bed university student dormitory with commercial spaces, café, lounges and laundry

**Client:** National Chung Hsing University

**Size:** 26640 sq m

**Status:** Ongoing



**Tanzi Public Sports Center** 潭子運動中心

**Brief:** 7-lane/25m swimming pool, sauna, basketball court, volleyball court, badminton court, table tennis room, weight room, dance studio, and shops

**Client:** Taichung City Government

**Size:** 13670 sq m

**Status:** Ongoing



**ITRI Guanfu Campus Gate Renovation**

**Brief:** Existing gate renovation, adding a meeting room and a guard station

**Client:** Industrial Technology Research Institute

**Size:** 90 sq m

**Status:** Completed 2015

2013



**SZMC Gymnasium and Student Center** 樹人醫專學生活動中心

**Brief:** Multi-functional gymnasium, retractable seating, club offices, music rehearsal room, library, and cafe

**Client:** Shu-Zen Junior College of Medicine and Management

**Size:** 6753 sq m

**Status:** Completed 2016



**Chao Zhou Lake Control Center** 大潮州地下水補注湖監控中心

**Brief:** Water management control center with offices, visitor's facilities, and viewing tower

**Client:** Department of Water Resources, Pingtung County Government

**Size:** 1340 sq m

**Status:** ongoing

2012



**ITRI Dormitory** 工研院單身宿舍

**Brief:** 201-room single dormitory with facilities  
**Client:** Industrial Technology Research Institute  
**Size:** 11366 sq m  
**Status:** Ongoing



**Kaohsiung American School New Campus First Phase** 高雄美國學校

**Brief:** K-12 classrooms, laboratories, music classrooms, art studios, media center, library, exhibition hall, faculty lounge, offices, and 400-seat auditorium  
**Client:** Kaohsiung American School  
**Size:** 21000 sq m  
**Status:** Completed 2015



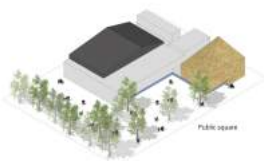
**Tainan Tung-Men Holiness Church** 台南東門聖教會

**Brief:** Protestant church with chapel, book store, classrooms, café, and prayer rooms  
**Client:** Tainan Tung-Men holiness Church  
**Size:** 1227 sq m  
**Status:** Ongoing



**Kaohsiung City Hall Fengshan Office** 高雄市鳳山行政中心

**Brief:** Municipal offices, meeting rooms in various sizes, post office, and restaurant  
**Client:** Kaohsiung City Government  
**Size:** 19000 sq m  
**Status:** Completed 2014



**Beigang cultural Center** 北港文化中心

**Brief:** 400-seat music hall and exhibition spaces of local history  
**Client:** Yunlin County Government  
**Size:** 2918 sq m  
**Status:** Completed 2015

2006-2011



**Dadong Art Center** 大東文化藝術中心

**Brief:** 900-seat multifunctional theater, black box theater, exhibition hall, art library, classrooms, and offices  
**Client:** Cultural Affairs Bureau, Kaohsiung City Government  
**Size:** 24470 sq m  
**Status:** Completed 2012



**NUK College of Humanities and Social Sciences** 高雄大學人文社會科學院

**Brief:** Classrooms, offices, 200-seat auditorium, workshops, and courtyards

**Client:** National University of Kaohsiung

**Size:** 12020 sq m

**Status:** Completed 2011



**Hong-Mao-Gang Cultural Park** 紅毛港文化園區

**Brief:** Reconstruction of cultural park by relocating relics from original village, combining installation arts, exhibition hall, and viewing platform

**Client:** Cultural Affairs Bureau, Kaohsiung City Government

**Size:** 34200 sq m

**Status:** Completed 2012



**Tainan Yuwen Library** 台南裕文圖書館

**Brief:** Public library with multimedia rooms, children's area, young adults' area, event spaces, and café

**Client:** Cultural Affairs Bureau, Tainan City Government

**Size:** 3145 sq m

**Status:** Completed 2011



# contact

## **MAYU architects+**

3F-1, 10, Siwei 4<sup>th</sup> Rd.,

Kaohsiung

TAIWAN

t: +886 7 3389098

e: [info@malone.com.tw](mailto:info@malone.com.tw)

w: [www.malonearch.com.tw](http://www.malonearch.com.tw)