

BATEK ARCHITEKTEN

# SPA98



BATEK ARCHITEKTEN  
HEINRICH-ROLLER-STRASSE 20 · 10405 BERLIN · GERMANY  
T +49 30 8680 375-0 · F +49 30 8680 375-30  
CONTACT@BATEKARCHITEKTEN.COM · BATEKARCHITEKTEN.COM

## PRESS RELEASE

SEPTEMBER 2023

BATEK ARCHITEKTEN completed the renovation of a single-family home on the outskirts of Berlin.

Located on the outskirts of Berlin, SPA98 emerges as a tranquil and harmonious sanctuary after extensive renovation efforts. With the design of the single-family home, the Berlin-based architecture studio, known for its functional, meticulously thought-through, and forward-looking spatial concepts in the private and public sectors, once again demonstrates its sensitive approach to existing spaces and their character. The outcome is a timeless house with an open-plan layout, offering a sophisticated design with high-quality materials and carefully curated color accents, making the space an unparalleled home for its inhabitants.

Originally built in the 1960s, the house now shines with simple and timeless elegance following the renovation. The decision to focus on the essentials, both aesthetically and functionally, creates a relaxed and balanced atmosphere. Through the use of soft color tones and high-quality materials, the house acquires a modern aesthetic that accentuates the unique features of the original building.

The ground floor has been designed with an open layout that seamlessly connects the kitchen, dining area, and living room. A central block featuring a fireplace and storage space provides a subtle division between the rooms while maintaining a spacious openness in the floor plan. The upper floor is dedicated to private spaces, including a studio, a guest room, a bedroom, and a master bathroom, all designed to ensure a smooth flow of space.

Clean lines, integrated cabinets, and shelves offer ample storage throughout the house, contributing to a sense of tranquility. The seamlessly laid white-oiled Douglas fir wooden floor underscores the harmonious atmosphere within the house, imbuing a natural dynamism through the wood's grain. Built-in furniture is crafted from light Douglas fir wood and complemented by subtle shades of gray or white. Carrara marble surfaces in the kitchen add stylish charm, while micro-cement plaster in the bathrooms creates a pleasing texture.

To add splashes of color, BATEK ARCHITEKTEN chose a bold shade of blue that highlights specific design elements and creates an appealing contrast to the otherwise restrained ambiance. The pre-existing brick walls and ceilings in the basement were intentionally painted white to create an intriguing contrast and emphasize the character of the original structure.

The meticulous attention to detail and nuanced understanding of materials by BATEK ARCHITEKTEN shape a harmonious and timeless refuge. SPA98 showcases the studio's ability to transform a residence into a place of serenity and tranquility.

/End.

BATEK ARCHITEKTEN

## NOTES TO EDITORS

### Facts

TEAM	Rocco Spena, Patrick Batek
COMPLETION	März 2022
AREA	240 qm
SCOPE OF WORK	LP 1-9
MATERIALS	Dougalsie, HPL, Marmor, MDF
PHOTOGRAPHER	Marcus Wend

BATEK ARCHITEKTEN

## OFFICE PROFILE

BATEK ARCHITEKTEN is an office for interior design and architecture, located in Berlin. The portfolio comprises public and private projects including apartments and private houses, retail shops and surgeries, restaurants, hotels and offices. Frequently, BATEK ARCHITEKTEN works with existing spaces, which they develop further with a sensitive approach to the space and its specific character. The office also stands for a keen sense for materials, colours and light. The projects are characterized by a clean architectural structure and a conducive atmosphere. BATEK ARCHITEKTEN regard themselves as service providers: they realize the specific wishes and requirements of their customers individually and in highest quality and adapt their design to the respective conditions and requirements.

[www.batekarchitekten.com](http://www.batekarchitekten.com)

## PRESS CONTACT

Brand. Kiosk  
Leila Suhrab / Susanne Günther  
[batek@brand-kiosk.com](mailto:batek@brand-kiosk.com)  
+49 (0)69 2649 1122

BATEK ARCHITEKTEN



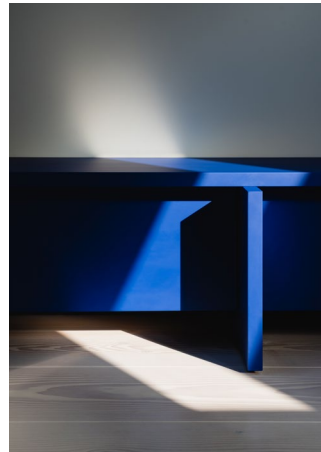
BATEK\_SPANISCHEALLEE\_MARCUSWEND\_DSC04701.JPG



BATEK\_SPANISCHEALLEE\_MARCUSWEND\_DSC04703.JPG



BATEK\_SPANISCHEALLEE\_MARCUSWEND\_DSC04759.JPG



BATEK\_SPANISCHEALLEE\_MARCUSWEND\_DSC04710.JPG



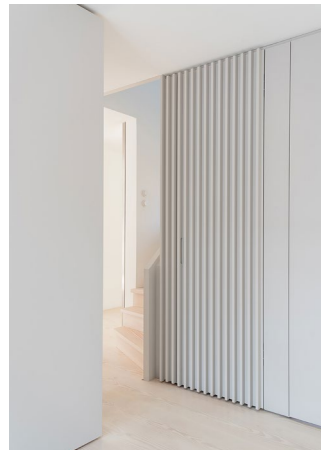
BATEK\_SPANISCHEALLEE\_MARCUSWEND\_DSC04704.JPG



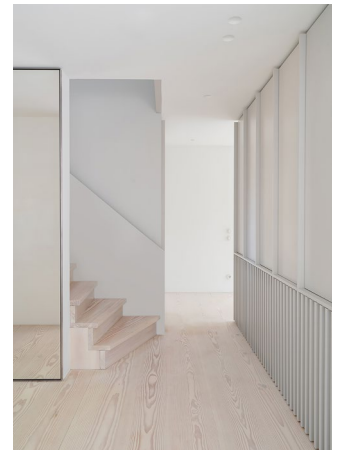
BATEK\_SPANISCHEALLEE\_MARCUSWEND\_DSC04750.JPG



BATEK\_SPANISCHEALLEE\_MARCUSWEND\_DSC04748.JPG



BATEK\_SPANISCHEALLEE\_MARCUSWEND\_DSC04746.JPG



BATEK\_SPANISCHEALLEE\_MARCUSWEND\_DSC04741.JPG

Available photographs, floorplans and other plan materials.  
To receive high-resolution images, please contact Brand. Kiosk on: [batek@brand-kiosk.com](mailto:batek@brand-kiosk.com)  
Please credit Marcus Wend in all publications.

BATEK ARCHITEKTEN



BATEK\_SPANISCHEALLEE\_MARCUSWEND\_DSC04794.JPG



BATEK\_SPANISCHEALLEE\_MARCUSWEND\_DSC04861.JPG



BATEK\_SPANISCHEALLEE\_MARCUSWEND\_DSC04780.JPG



BATEK\_SPANISCHEALLEE\_MARCUSWEND\_DSC04776.JPG



BATEK\_SPANISCHEALLEE\_MARCUSWEND\_DSC04766.JPG



BATEK\_SPANISCHEALLEE\_MARCUSWEND\_DSC04784.JPG



BATEK\_SPANISCHEALLEE\_MARCUSWEND\_DSC04804.JPG



BATEK\_SPANISCHEALLEE\_MARCUSWEND\_DSC04734.JPG



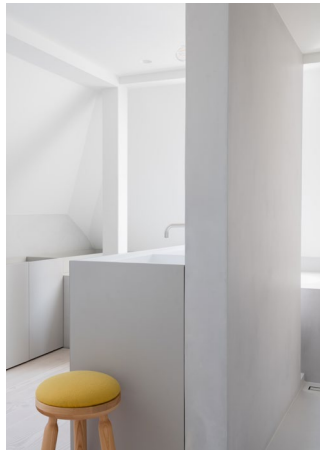
BATEK\_SPANISCHEALLEE\_MARCUSWEND\_DSC04772.JPG

Available photographs, floorplans and other plan materials.  
To receive high-resolution images, please contact Brand. Kiosk on: [batek@brand-kiosk.com](mailto:batek@brand-kiosk.com)  
Please credit Marcus Wend in all publications.

BATEK ARCHITEKTEN



BATEK\_SPANISCHEALLEE\_MARCUSWEND\_DSC04712.JPG



BATEK\_SPANISCHEALLEE\_MARCUSWEND\_DSC04740.JPG



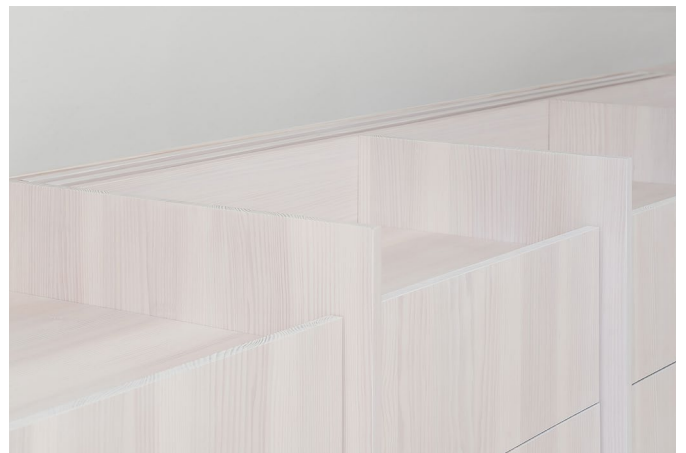
BATEK\_SPANISCHEALLEE\_MARCUSWEND\_DSC04812.JPG



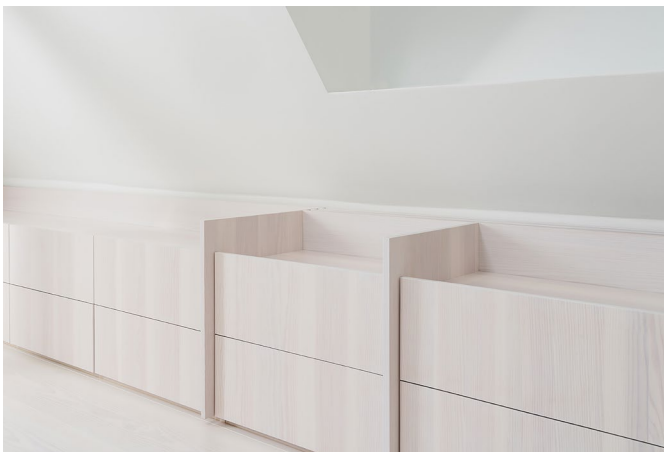
BATEK\_SPANISCHEALLEE\_MARCUSWEND\_DSC04813.JPG



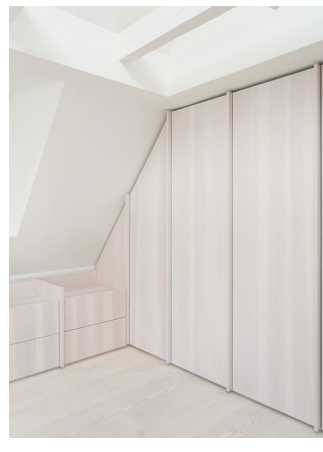
BATEK\_SPANISCHEALLEE\_MARCUSWEND\_DSC04733.JPG



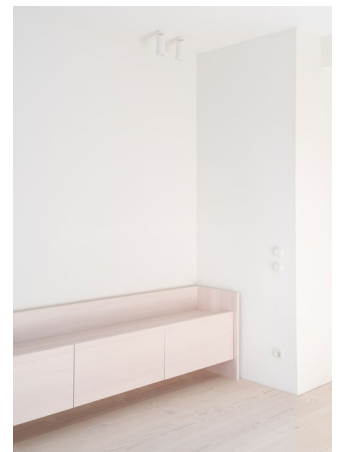
BATEK\_SPANISCHEALLEE\_MARCUSWEND\_DSC04721.JPG



BATEK\_SPANISCHEALLEE\_MARCUSWEND\_DSC04725.JPG



BATEK\_SPANISCHEALLEE\_MARCUSWEND\_DSC04716.JPG



BATEK\_SPANISCHEALLEE\_MARCUSWEND\_DSC04859.JPG

Available photographs, floorplans and other plan materials.  
To receive high-resolution images, please contact Brand. Kiosk on: [batek@brand-kiosk.com](mailto:batek@brand-kiosk.com)  
Please credit Marcus Wend in all publications.



BATEK\_SPANISCHEALLEE\_MARCUSWEND\_DSC04816.JPG



BATEK\_SPANISCHEALLEE\_MARCUSWEND\_DSC04815.JPG



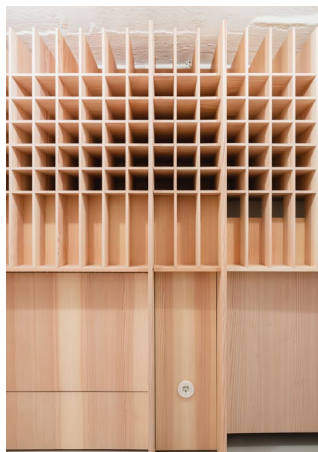
BATEK\_SPANISCHEALLEE\_MARCUSWEND\_DSC04808.JPG



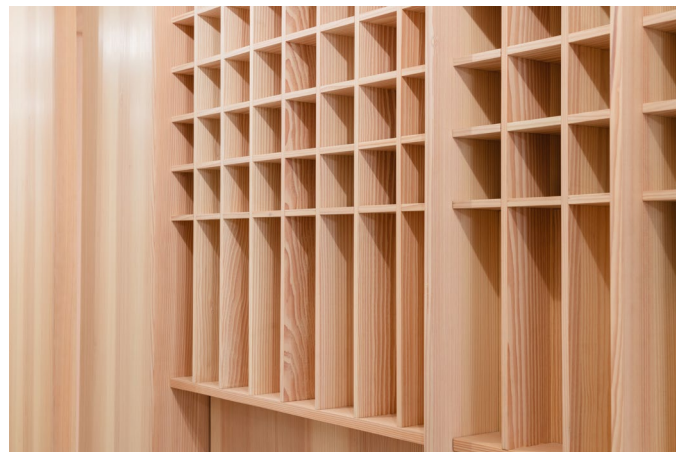
BATEK\_SPANISCHEALLEE\_MARCUSWEND\_DSC04837.JPG



BATEK\_SPANISCHEALLEE\_MARCUSWEND\_DSC04828.JPG



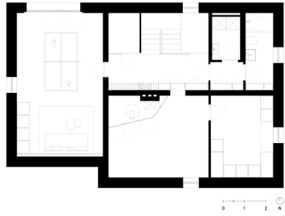
BATEK\_SPANISCHEALLEE\_MARCUSWEND\_DSC04824.JPG



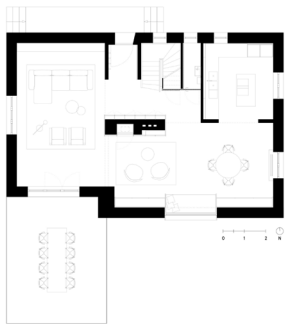
BATEK\_SPANISCHEALLEE\_MARCUSWEND\_DSC04825.JPG

Available photographs, floorplans and other plan materials.  
To receive high-resolution images, please contact Brand. Kiosk on: [batek@brand-kiosk.com](mailto:batek@brand-kiosk.com)  
Please credit Marcus Wend in all publications.

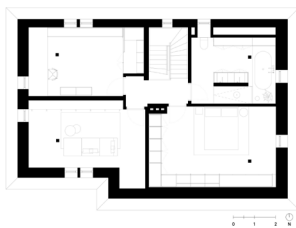




BA2010\_SPANISCHEALLEE98\_GRUNDRISS\_UG.JPG



BA2010\_SPANISCHEALLEE98\_GRUNDRISS\_EG.JPG



BA2010\_SPANISCHEALLEE98\_GRUNDRISS\_1.OG.JPG

Available photographs, floorplans and other plan materials.  
To receive high-resolution images, please contact Brand. Kiosk on: [batek@brand-kiosk.com](mailto:batek@brand-kiosk.com)  
Please credit Marcus Wend in all publications.