

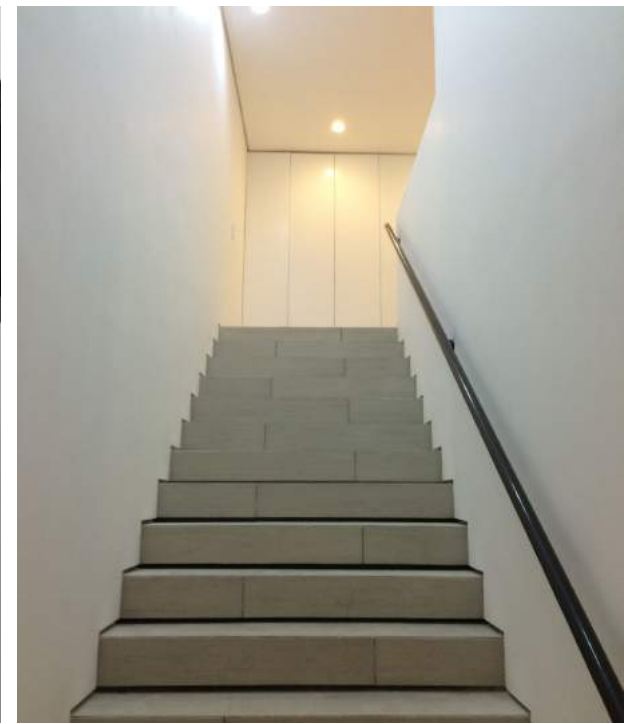
The Portal House is a 3-bedroom low-cost housing solution designed as a modular template for future replication.

Located in an old neighborhood of Metro Manila, the Portal House stands apart from the surrounding traditional structures with its white cubic volume and black concrete portals.

Designed using the simplest of materials: concrete, glass and steel, its distinct feature are the window portals, implemented to block the harsh rays of the sun and strong tropical monsoons.

The Portal House, 2014-2015





Details

Clockwise from Top Left: Guests are welcomed into the residence through the concrete walkway lined with bamboo, leading into a foyer concealing the main entry of the house, traditionally meant to ward off bad spirits. A wide stairwell leads to the upper floor. The stairs are finished in oak wood porcelain tiles. The window portals block the harsh rays of the sun, as well as conceal the window AC units on the side elevation.

Details

Clockwise from Left: The home's setbacks serve as landscaped walkways into the garden, where the portals hang from the walls like picture frames providing views into the interior spaces. The central walkways into the duplex acts as a spine, highlighting the two volumes setback from each other. A glimpse into the Portal House's streamlined interiors.



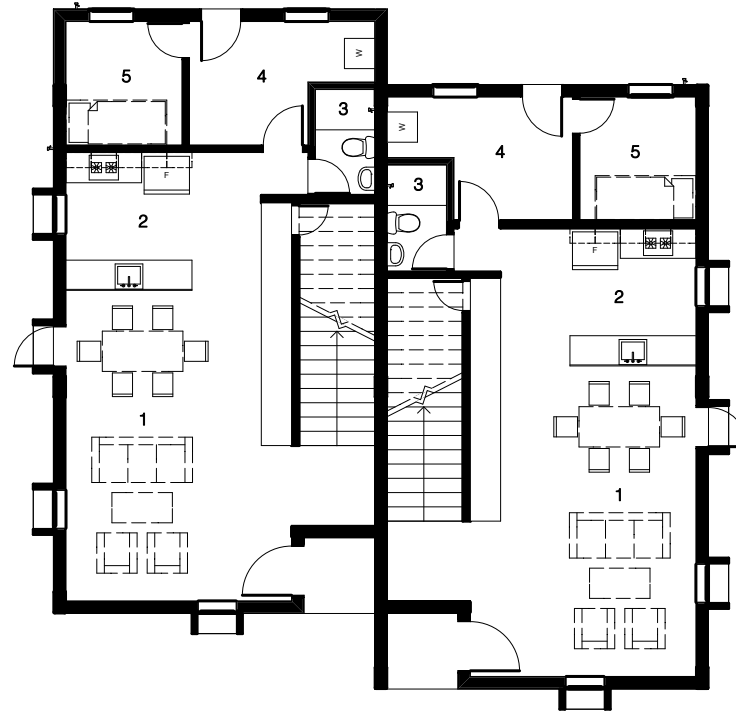
Ground Floor

1. Living and Dining Area
2. Kitchen
3. Powder Room
4. Service Area
5. Maids' Room

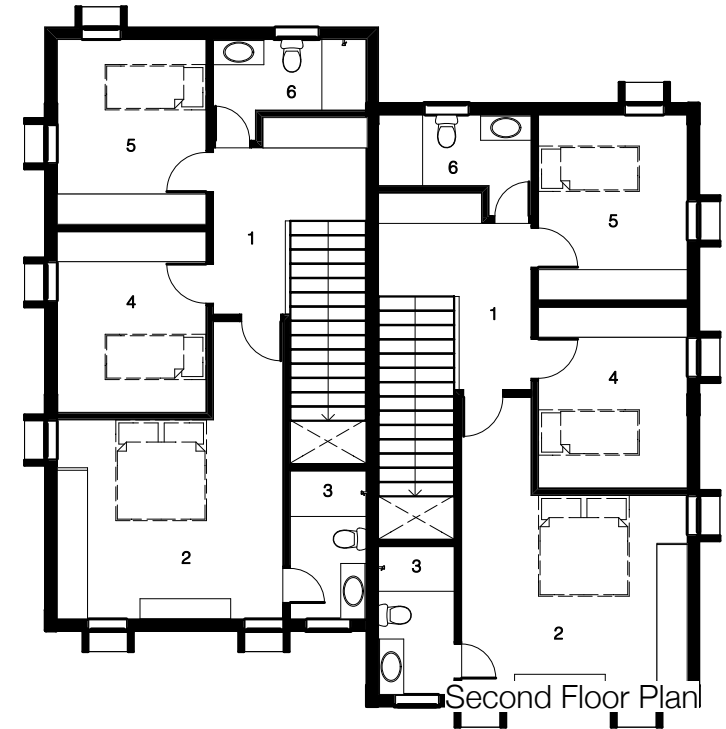
Second Floor

1. Hallway
2. Masters' Bedroom
3. Masters' Toilet & Bath
4. Bedroom 1
5. Bedroom 2
6. Common Toilet & Bath

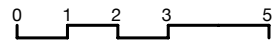
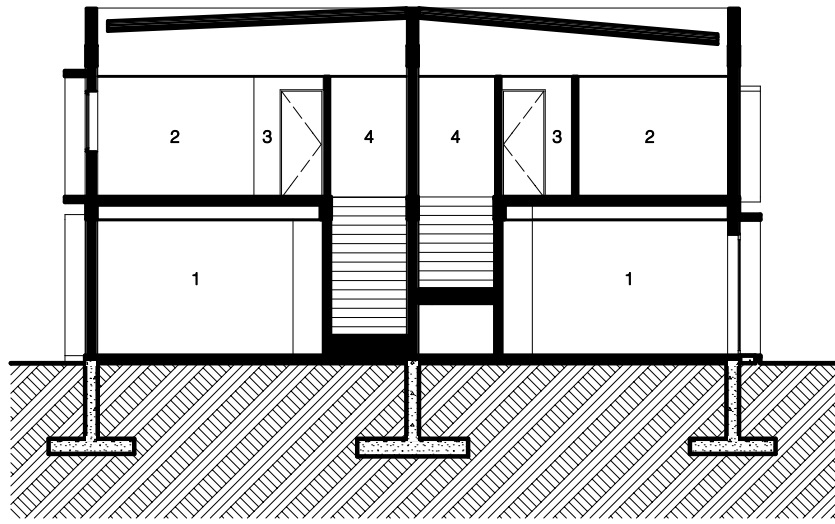
The ground floor boasts of an open plan that features a clean kitchen with an island in white solid surface. All basic services of tropical living were included in the residence: hot water, air-conditioning, cable tv access, and gas and electric cooking.



Ground Floor Plan

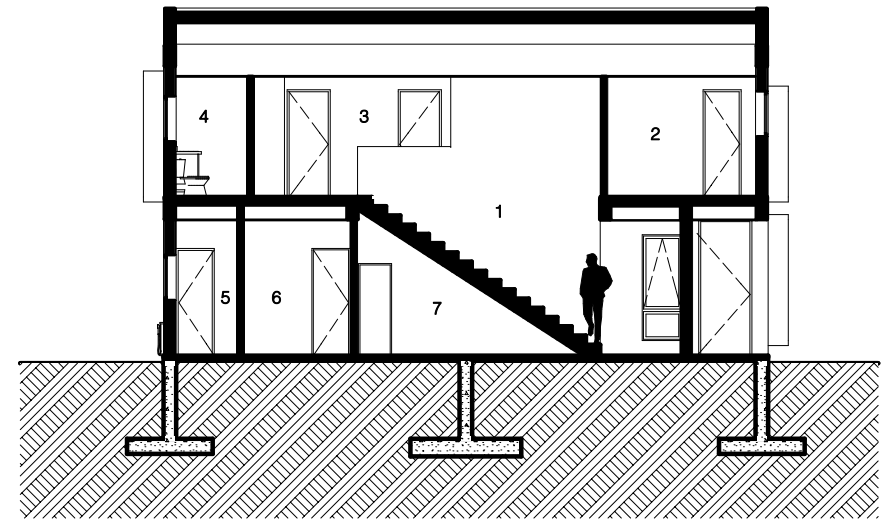


Second Floor Plan



Cross Section

- 1. Living and Dining Area
- 2. Bedroom 1
- 3. Hallway
- 4. Stairwell



Longitudinal Section

- 1. Stairwell
- 2. Masters' TB&B
- 3. Hallway
- 4. Common T&B
- 5. Service Area
- 6. Powder Room
- 7. Storage

Technical Drawings, Scale 1:150mm