

POLYTRON Glass

LED SCREEN GLASS 2015

LED SCREEN GLASS

80% TRANSPARENT LED DISPLAY

Brand stores • Stage design • Architecture media • Windows advertising • Car showroom

About us

LED SCREEN GLASS is a new technology designed for high-end market, with outstanding looking, high transparency and vivid performance!

This special innovation fits for wide application such as airport, luxury chain stores and modern architecture, for advertising and enhancing your brand imagine.

As the inventor of this special technology, we are also the unique manufacturer of this transparent LED display. POLYTRONGLASS is dedicating to update this product consequently to increase value added service for all our clients.

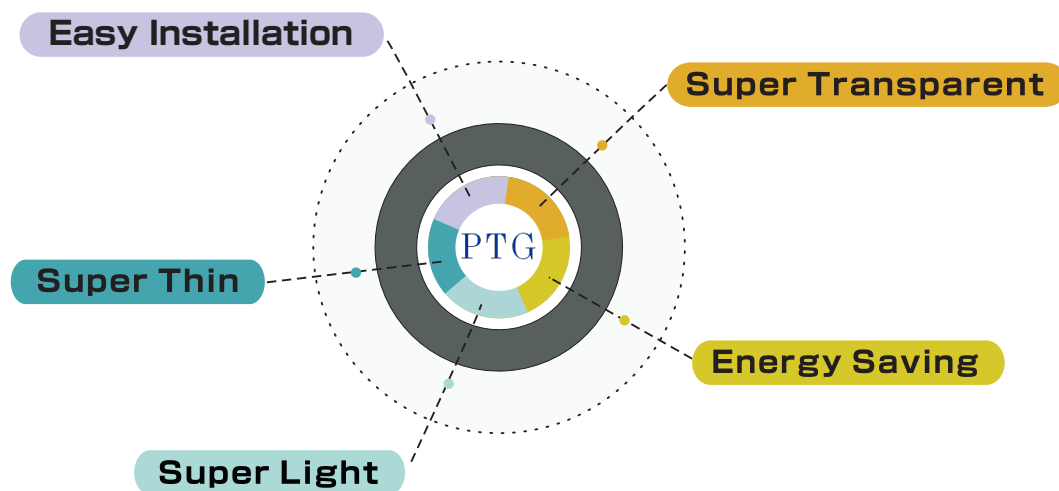
POLYTRONGLASS makes difference! You are most welcome to us.



Design Concept

Any product could be much simpler and more beautiful. POLYTRONGLASS just follows this natural sense and believes we can change LED display to be transparent. With effort, this dream becomes true and everything becomes different.

With this special transparent display, the architects and designers will have an excellent option for their works. Their special idea will become true and outstanding.



SUPER TRANSPARENT
(XW5A/XW5B/XW8/XW10)



More than 75% transparency, the display is invisible viewing from 5 meters away. It makes amazing image effect, and by this transparent LED display the artists and designers can realize their creative ideas.

The module size is maximum 960mm x 320mm. By so wide modules, there will be few vertical bars when make up a display with meters width.

EASY INSTALLATION
(XW5A/XW5B/XW8/XW10)



No any screwing during module installation. All the connection could be manipulated by hands.

EASY MAINTENANCE
(XW5A/XW5B/XW8/XW10)



Any single LED strip could be replaced immediately. Any problem happened in LED strip could be solved within 1 minute.

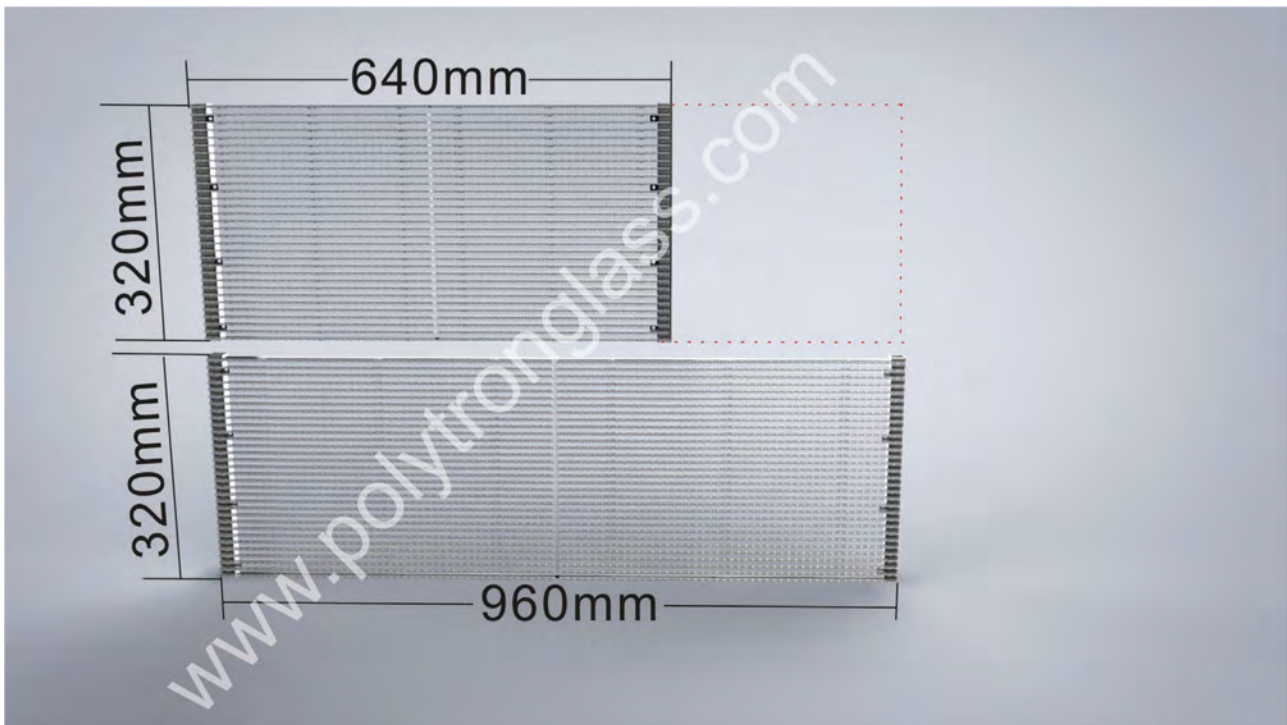
ALL IN ONE SIZE



Model	Pixel Pitch	Module size	Resolution
XW5A	5mm x 8mm	960mm x 320mm	192 X 40
XW5B	5mm x 10mm	960mm x 320mm	192 X 32
XW8	7.5mm x 8mm	960mm x 320mm	128 X 40
XW10	10mm x 10mm	960mm x 320mm	96 X 32

All the XW5A, XW5B, XW8 and XW10 are with same module dimension. For one size of display, it will be four options to make.

FLEXIBLE SIZE
(XW5A/XW5B/XW8/XW10)



The module width is flexible from 640mm to 960mm. By this range of width, the module can make up any width of display.

POWER SOLUTION
(XW5A/XW5B/XW8/XW10)



Option A
Aluminum power box
Input: AC100V~AC240V
Output: DC5V
Max. distance of DC cable: 3m



Option B
Noise-free and small power box
Input: AC100V~AC240V
Output: DC5V
Max. distance of DC cable: 3m



Option C
DC~DC power supply integrated inside the vertical bars
Input: DC48V
Output: DC5V.
Max. distance of DC cable: 30m

Connect to AC~DC power supply max 30m away.

OTHER FEATURES (XW5A/XW5B/XW8/XW10)

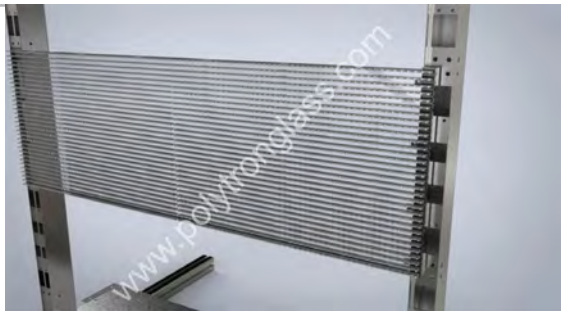
Remote DC-DC power supply (Optional)

The power supply could be placed 30m away and make the appearance simple and tidy.



Perfect alignment

The precise aluminum profile ensures perfect alignment between modules.



Outstanding appearance

Transparent module and simple structure design make the appearance attractive to people.



Compact

Light & thin design make all the equipment to be very compact. It saves cost in transportation and space occupation.



INSTALLATION
(XW5A/XW5B/XW8/XW10)



Installation A: Use an Aluminum base to make the display stand in somewhere.



Installation B: Hanging.



BIG AREA INSTALLATION (XW5A/XW5B/XW8/XW10)

For application of big architecture advertising project, the size of the glass LED display could be customized-designed to fit the Aluminium frame.



The LED display produced in modules and fixed to the glass frame one by one.



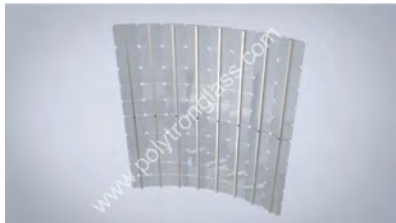
The power and signal cables placed along with the Aluminium fram. The power boxes placed up to the ceiling.



The LED display perfectly integrated with the glass and remained the transparence of the glass.



CUSTOMIZED DESIGN
(XD14.65/XD16/XN20/XN25/XN31.25)



Customized design according to the features of the glass curtain. All the LED modules, fixing parts, installation tools, and software could be specially designed and produced. It makes the whole project appearance to be outstanding and unrealistic.

Specification of LED SCREEN GLASS (V1405)

Model	XT5	XW5A	XW5B	XW8	XW10	XD14.65	XD16	XN20	XN25	XN31.25
Pixel Pitch(mm)	5 x 8	5 x 8	5 x 10	7.5 x 8	10	14.65	16	20	25	31.25
LED Model	SMD2121	SMD3528	SMD3528	SMD3528	SMD3528	SMD3535	SMD3535	SMD3535	SMD3535	SMD3535
Brightness(nit)	A:3000 / B:6500	A:2500 / B:6500	A:2500 / B:6500	A:2500 / B:6500	A:2500 / B:6500	7500	6500	5000	2800	2000
Transparency	75%	75%	75%	68%	75%	80%	82%	87%	90%	92%
Module Size(mm)	1280 X 640	960 X 320	960 X 320	960 X 320	960 X 320	468.8 x 234.4	512 x 256	640 x 320	400 x 400	500 x 250
Module Resolution	1280 X 640	192 X 40	192 X 32	128 X 40	96 X 32	32 x 16	32 x 16	32 x 16	16 x 16	16 x 8
Resolution(dot/㎡)	25000	25000	20000	16666	10000	4660	3906	2500	1600	1024
Max. Power(W/㎡)	A:780 / B:850	A:520 / B:777	A:520 / B:777	A:520/ B:777	A:520 / B:777	950	830	650	400	270
Avg. Power(W/㎡)	A:330 / B:297	A:182 / B:271	A:182 / B:271	A:182/ B:271	A:182 / B:271	340	290	260	160	108
Scan Duty	1/4	1/3	1/3	1/4	1/3	1	1	1	1	1
Ingress Protection	IP64	IP42	IP42	IP42	IP42	IP42	IP42	IP42	IP42	IP42
Refresh Rate(hz)	1000~1500	1000~1500	1000~1500	1000~1500	1000~1500	1000~1500	1000~1500	1000~1500	1000~1500	1000~1500
Weight(kg/㎡)	28	12	12	12	12	13	13	13	13	13
MTBF(hours)	> 10000	> 10000	> 10000	> 10000	> 10000	> 10000	> 10000	> 10000	> 10000	> 10000
Working Temp	-10~40℃	-10~40℃	-10~40℃	-10~40℃	-10~40℃	-10~40℃	-10~40℃	-10~40℃	-10~40℃	-10~40℃

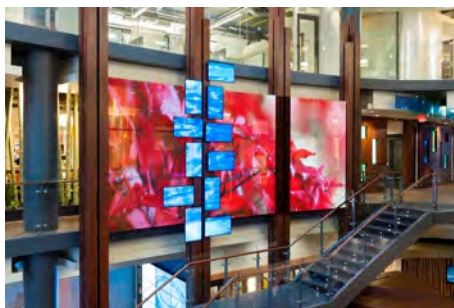
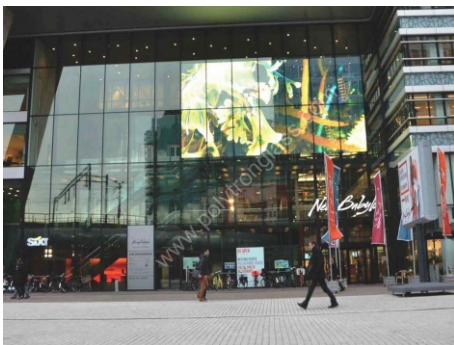
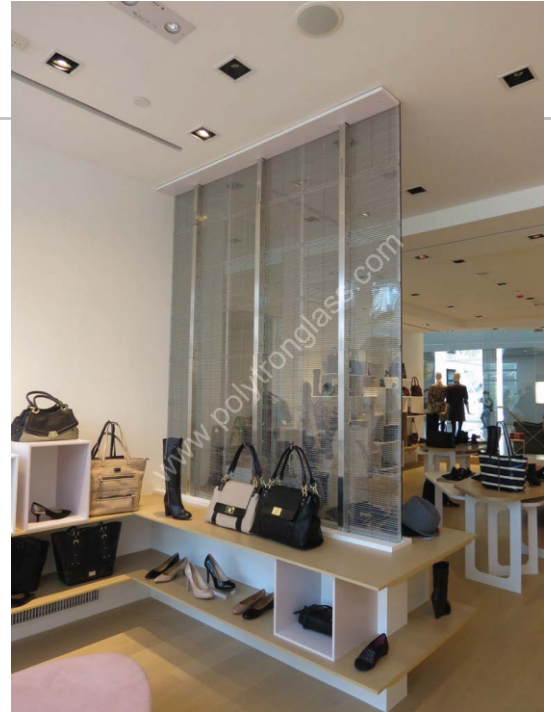
Remark:

1. XT5 is independent display with size 1280mm x 640mm, including noise-free power supply with CE.
2. Excepting XT5, module size of XW5A, XW5B, XW8, XW10, XD14.65, XD16, XN20, XN25, and XN31.25 could be customized accordingly.
3. Installation way is determined by the features of glass wall structure. Customized solution for installation could be provided accordingly.
4. "X" means "X-LED screen glass", "T" means "fixed size", "W" means "winddows advertising application", "D" means "daytime application", "N" means "nighttime application".

PROJECTS GALLERY

SHOPPING MALL

Add: Koningstunnel 2515,Rivierenbuurt-Noord
Den Haag, Nederland
Size: 80.51m²
Model: XD16
Date: 2015



LEADING GLOBAL MANUFACTURER OF ELECTRONIC AND OPTICAL MATERIALS



POLYTRONGLASS OÜ
13-101 Randla Str., 10315 Tallin, Estonia
M: +37 257 96 1010
export@polytronglass.com
www.polytronglass.com