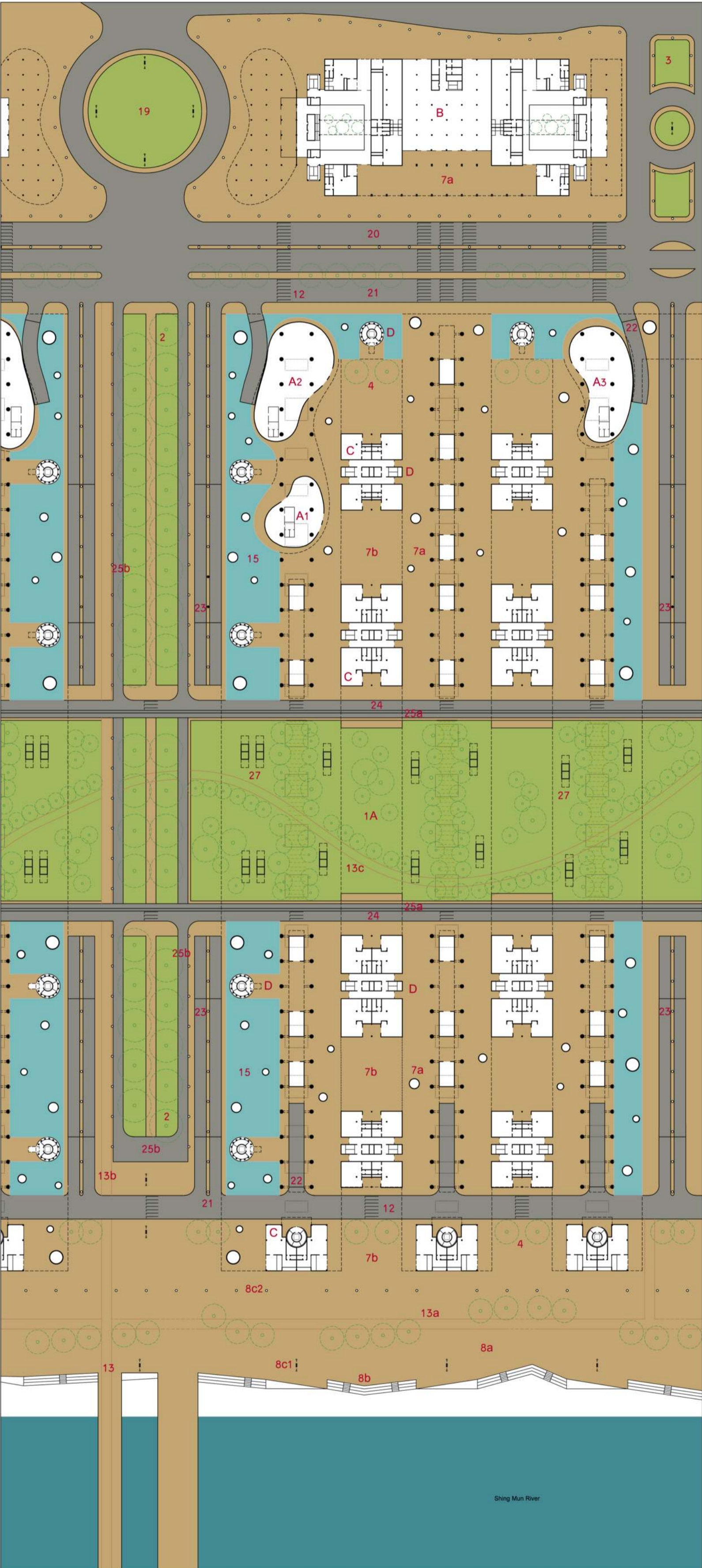
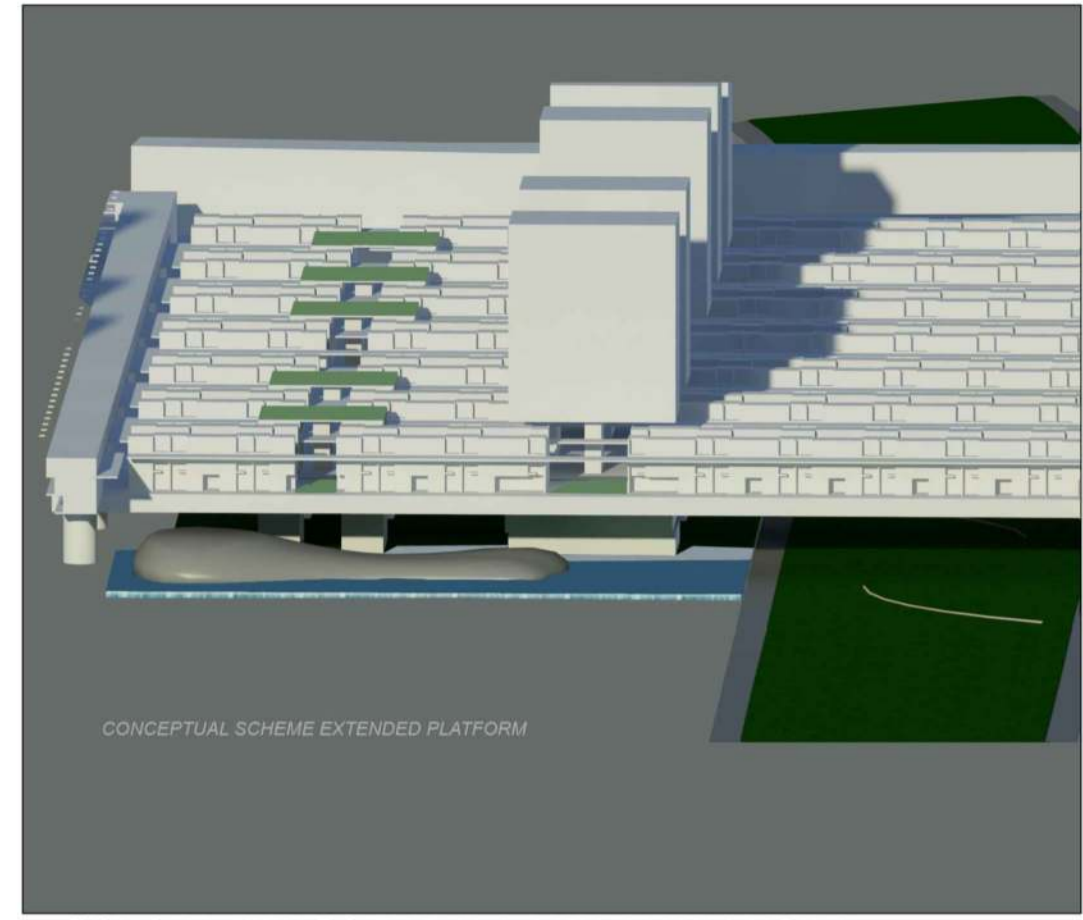




SYSTEM OF THE DOUBLE TOWERS AND OF THE EXTENDED PLATFORM



Groundfloor level - SITE PLAN 1:1000



CONCEPTUAL SCHEME EXTENDED PLATFORM

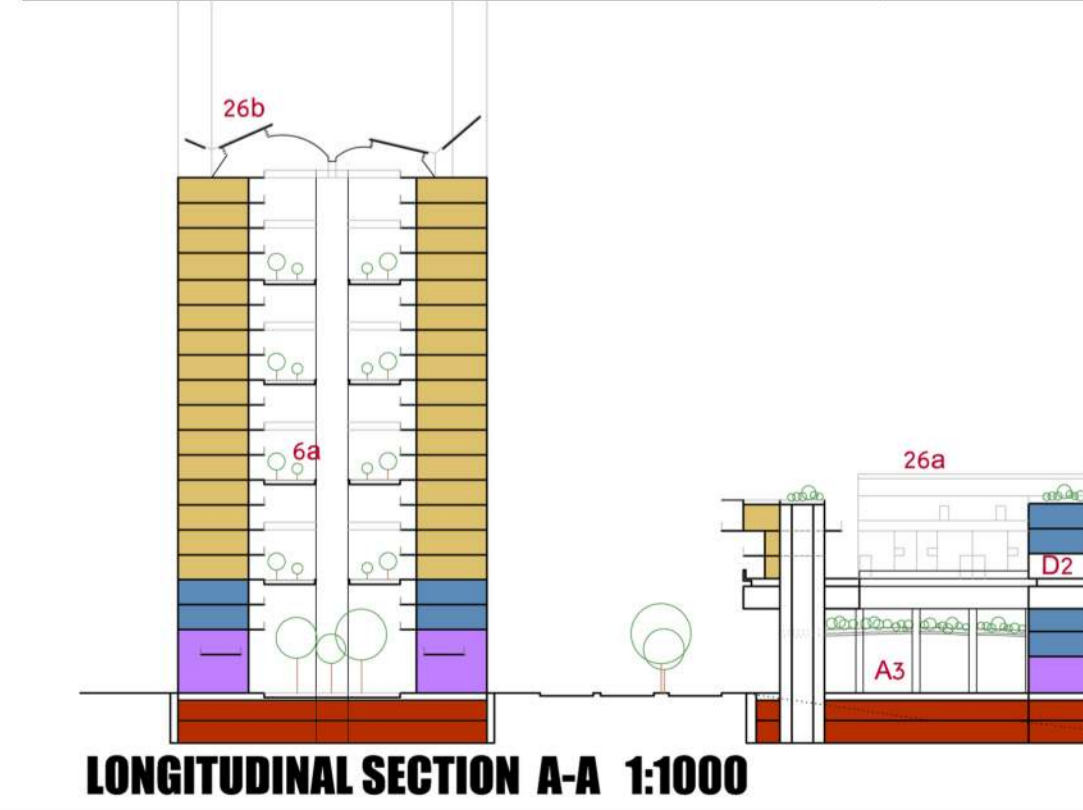
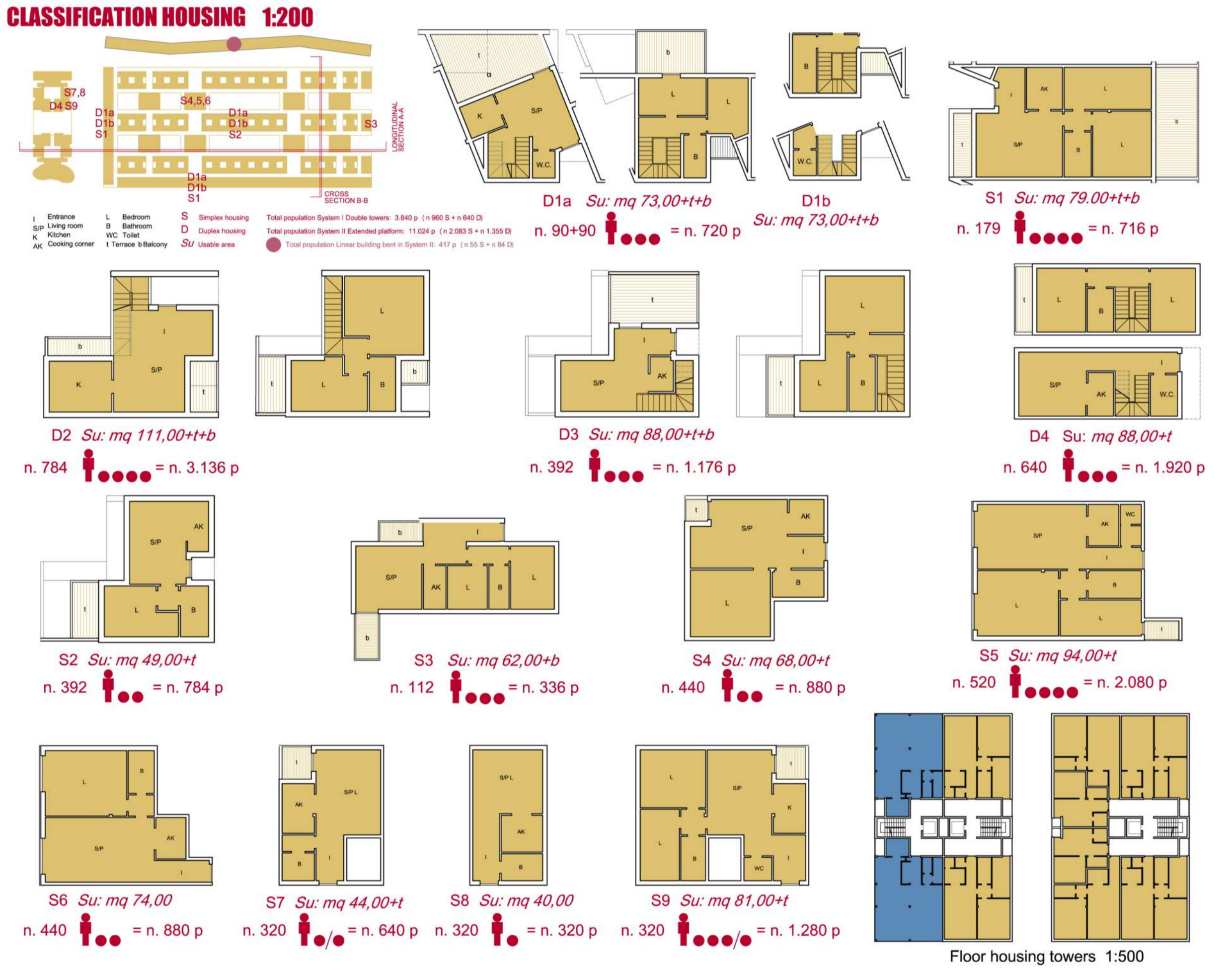


VIEW BELOW PLATFORM

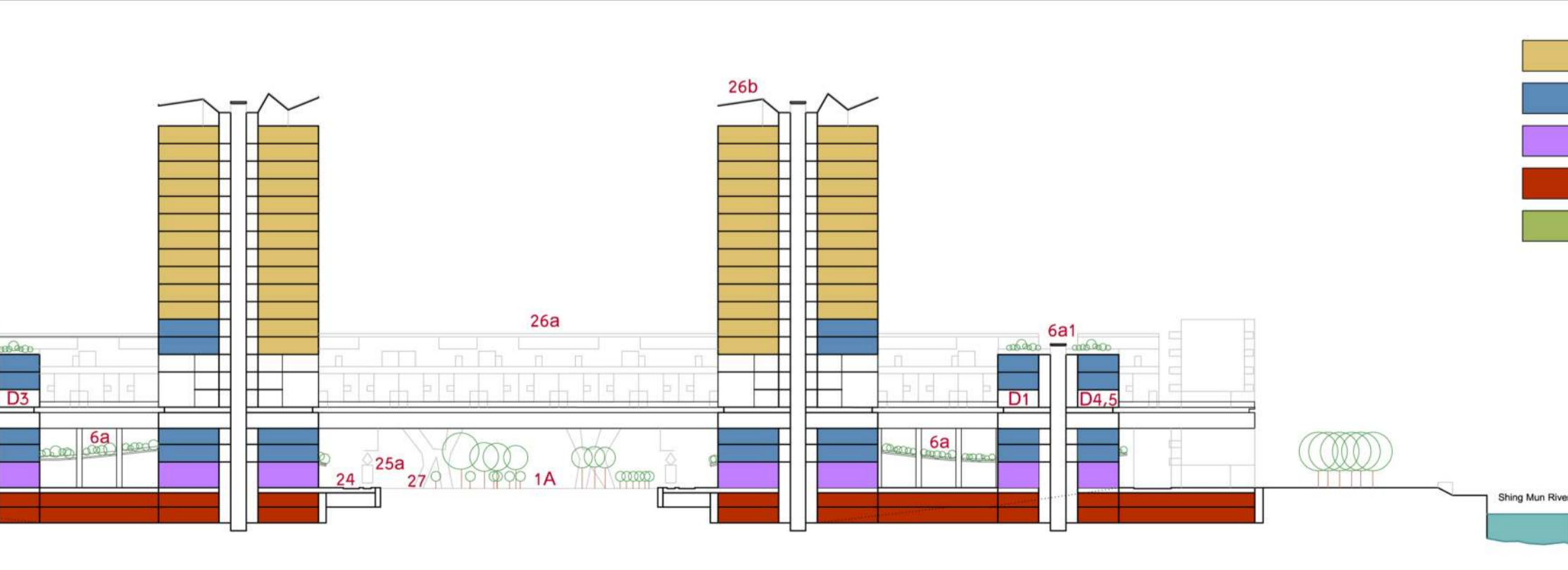


VIEW ON PLATFORM

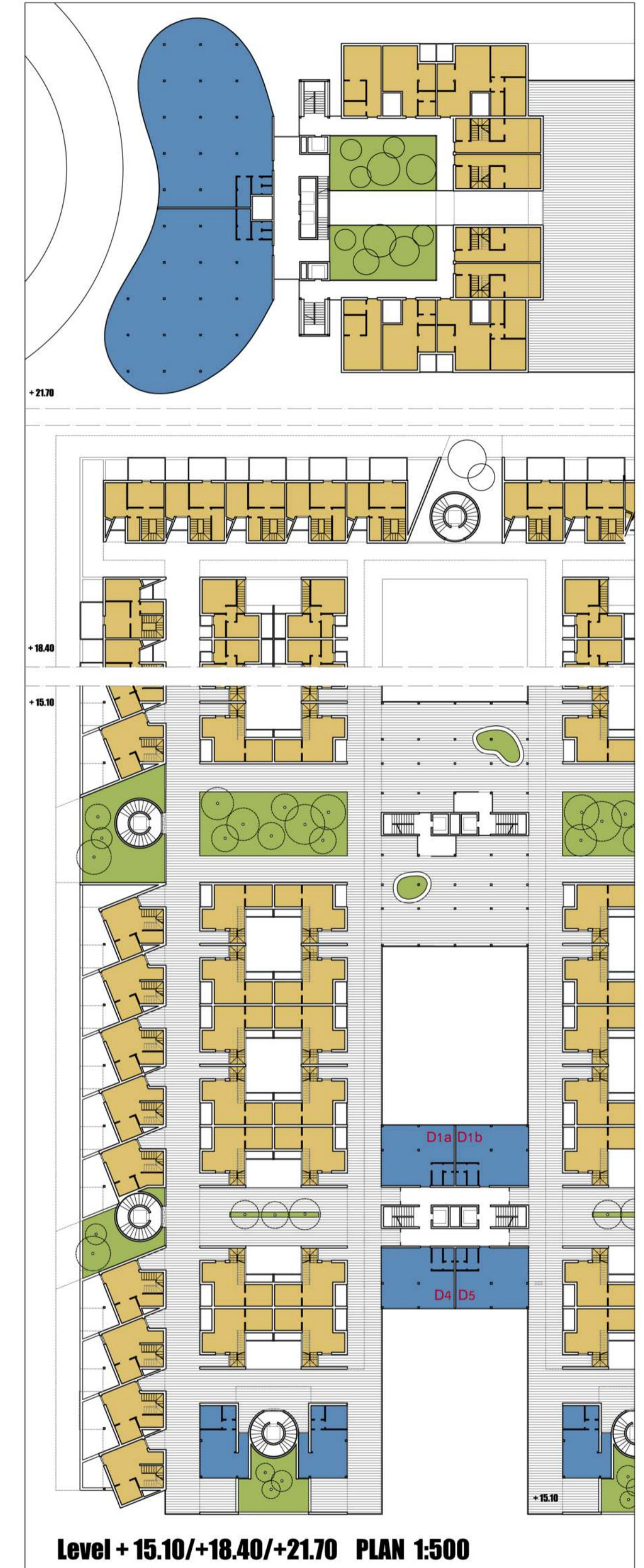
- LEGEND**
- A- Pavilion for productives and environmental sustainability activities
 - 1- Car-bike sharing
 - 2- Environmental sustainability activities (biodiversity products, training workshops for energy saving and recycling, preparation of products for the energy saving and recycling)
 - 3- Free use pavilion for experimenting with new forms of production and leisure in start-up mode
 - B- Large space for commercial, management, recreational activities and public services (supermarket, shopping center, bank, fitness area, cinema, media library, hospital, surgery, school, post office, etc.)
 - C- Shop detail
 - D- Entrance to the settlement system with mixed functional (integration buildings for the free market, subsidized housing, etc./ social services: D1 social center, D2 mini accommodation and housing communities with assistance to seniors, D3 counseling, D4 additional cultural activities, D5 free spaces for common use)
 - E- Commercial village
 - F- Open-air market
 - G- Belvedere landmark with photovoltaic and wind power generation
 - H- House of Music
 - I- Museum of the environmental sustainability
- 1- Public Park:
 - 1a wooded linear park
 - 1b woods
 - 2- Row of trees
 - 3- Green traffic island with lawn
 - 4- Blined trees
 - 5- Green hill with trees
 - 6- Public garden with trees:
 - 6a roof garden / a roof gardens common
 - 6b garden to the ground floor
 - 7- System of public pedestrian squares:
 - 7a covered square
 - 7b not covered square
 - 7c square
 - 7d belvedere terrace
 - 8- Pedestrian areas on the waterfront (Shing Mun River Channel- Sha Tin Hol):
 - 8a pedestrian surface
 - 8b broad riverbank steps
 - 8c photovoltaic public lighting:
 - 8c1 high
 - 8c2 low
 - 9- Promenade on the riverbank
 - 10- Sidewalk
 - 11- Pedestrian traffic island
 - 12- Crosswalk
 - 13- Cycle lane:
 - 13a photovoltaic surface
 - 13b three-component polymer surface in a reduced environmental impact
 - 13c clay stabilized surface
 - 14- Dock mooring boats
 - 15- Water surface with fountains and nebulizers
 - 16- Water lane
 - 17- Basin marina
 - 18- Basin of Culture unmovable
 - 19- Access roads: urban and suburban node communication
 - 20- Urban roads network for the connection between neighborhoods
 - 21- Local roads with access to underground parking of residences, commercial and office areas
 - 22- Vehicle ramp
 - 23- Vehicular underpass
 - 24- Service roads and emergency
 - 25- Service roads for electric public transport
 - 25a tram
 - 25b bus
 - 26- Photovoltaic roof:
 - 26a photovoltaic shelter
 - 26b photovoltaic canopy
 - 27- Metal trellis



LONGITUDINAL SECTION A-A 1:1000



CROSS SECTION B-B 1:1000



Level + 15.10/+18.40/+21.70 PLAN 1:500