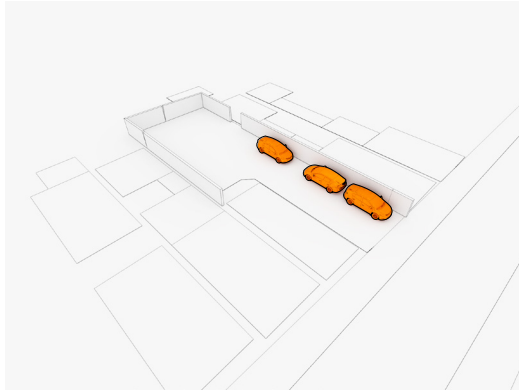
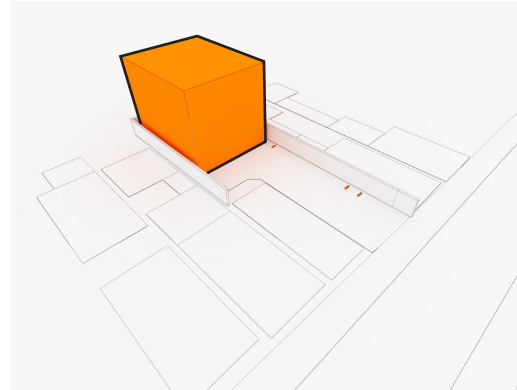


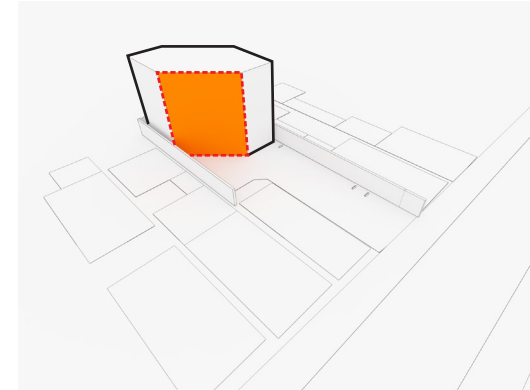
Context: in dense urban area.



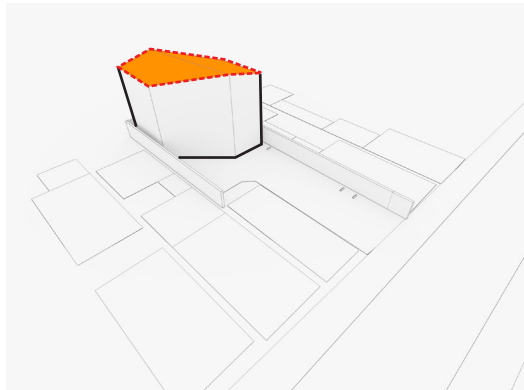
Parking: Three of the parking lot which is requirements from City.



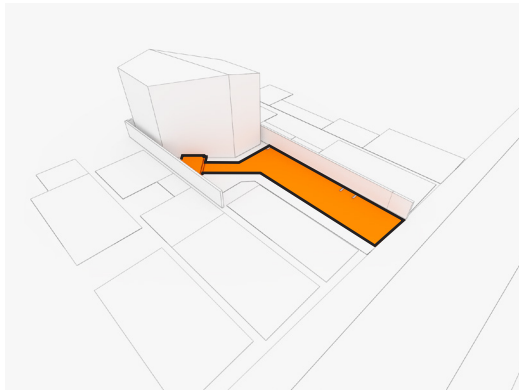
Volume: Maximum building volume.



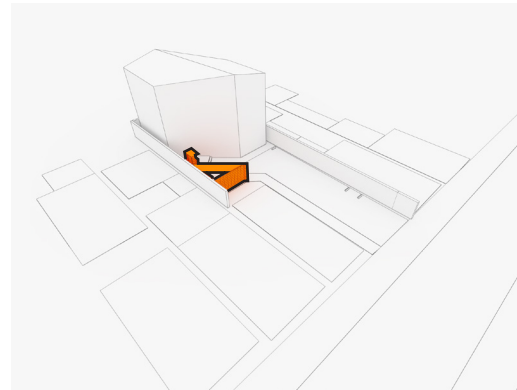
Cut 1: at 45 degrees facing north and south. (for lighting, ventilation.)



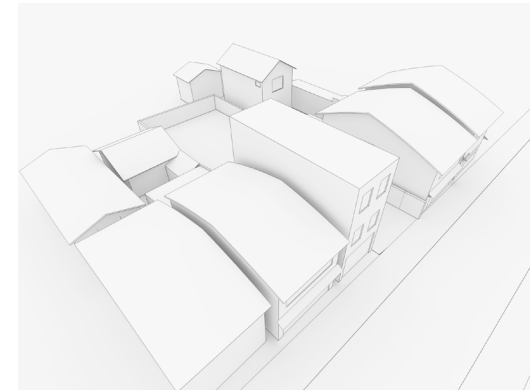
Cut 2: the top surface. (slope roof by landscape regulations.)



Approach: Ensure site passageway.

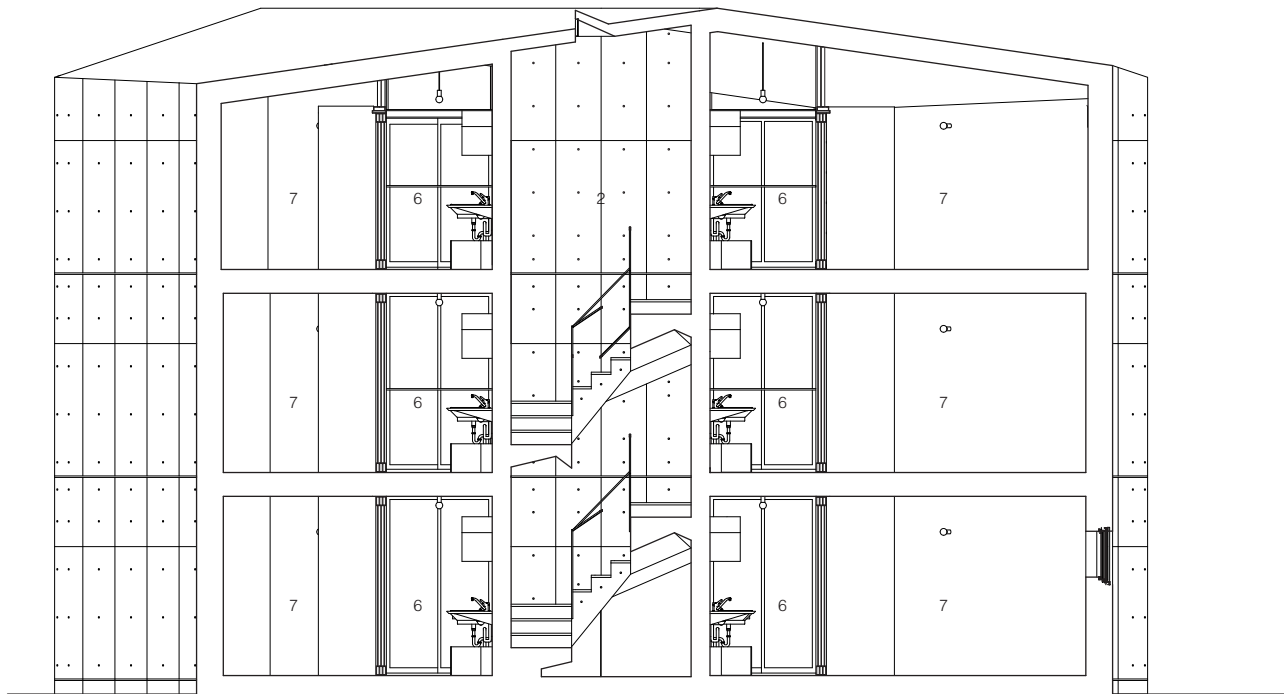


Exterior elements: Put bicycle port, doorbell intercom, post box, garbage box.



As a result: All the rooms have two windows facing south and north and 3-Dimensional relation to the city.





1. Path
2. Entrance shared stairs
3. Parking space
4. Bicycle parking space, garbage box.
5. Entrance
6. Dining, kitchen.
7. Living room
8. Fitting room
9. Bathroom
10. Court

Cross-sectional view 1:100