

LE BELLEVAL

Press Kit
May 2018

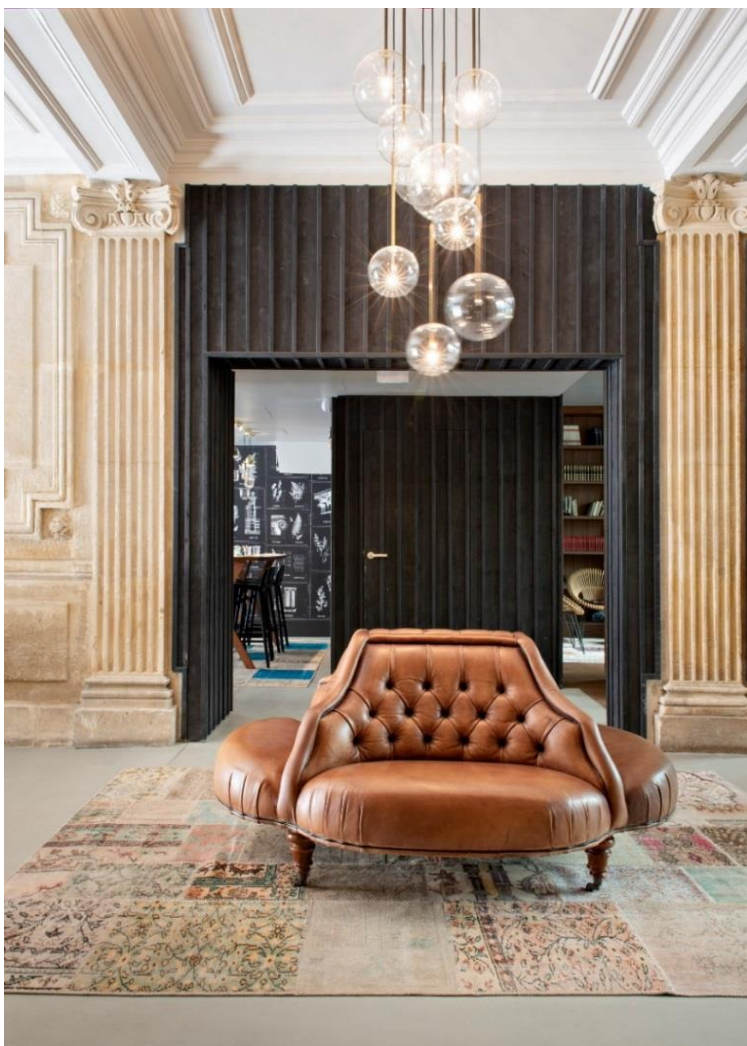


HÔTEL LE BELLEVAL

BLOSSOM

Rue de la Pépinière, a four-star hotel is coming into bloom. Designed to be a secret garden at the heart of the Saint-Lazare quarter's hipster jungle, the hotel is named after the botanist Pierre Richer de Belleval.

Architect Jean-Philippe Nuel is calling the shots, bringing a touch of the wild to this superb Haussmann-style building. The result is a hotel that offers a taste of Paris, a place dedicated to the Parisian tribes as well as travellers from around the world.



HYBRID

A destination in itself, the hotel offers a variety of services to appeal equally to local people and visitors from afar. In osmosis with the surroundings, the restaurant and bar are self-contained spaces opening onto the street. Upstairs, the 52 guest rooms and streets are modern Parisian nests where it's easy to feel at home. The old building's carriage entrance has been turned into a monumental lobby around which the hotel's various areas are organised. The hustle and bustle of the hotel's guests and visitors revolves around a central bench seat.

To the left is the restaurant, to the right the bar, then there is the reception desk and inner courtyard, a lively place on sunny days. «The ground floor areas are charged with a real energy, and are designed to be a place for meetings and interaction,» explains Jean-Philippe Nuel. As he emphasises, «The decoration is also designed to express this energy, generated by the variety of different functions. It combines references and trends to create a contemporary communal space, as opposed to a frozen backdrop.»

ORGANIC

The décor unfurls like a harmonious ecosystem. It combines Haussmannian volumes and ornamentation with an assortment of different objects and materials. The choice of textures, alternating between sophistication and rustic charm, helps to create a natural and dynamic atmosphere.

«The traces of the place's history are layered on top of each other like the earth's strata. The mosaic floors emerge in places as reminders of the building's many purposes,» says the architect.



In the plant-covered inner courtyard, the street artist Gola Hundun has cultivated the garden spirit, with a giant fresco blooming across a whole façade.

The guest rooms are designed to resemble a Parisian home of today, where the «green theme» is developed further. A teal wall creates a stunning contrast with the solid colour of the moulded ceiling. Different pieces of furniture are combined in a salvage-inspired style, providing constant reminders of nature. «The graphics of the fabrics and carpets dialogue with each other. The accessories bring each room to life and give them their own individual stories, with a sense of humour and quirkiness that adds a touch of poetry.»

Lastly, the lighting design plays on multiple indirect light sources in order to emphasise the atmosphere's soft and restful effect.

HELIOTROPE

In the guest rooms, the windows span the entire height of the wall in order to let in as much natural light as possible. Several of them have balconies where you can breathe in the city air. On the 7th floor (the top floor), the four suites (bedroom and lounge with room for four people) are flooded with sunlight.

On the street side, two of them have genuine terraces that overlook the rooftops of Paris and make the most of the hotel's ideal location. They reveal the top of the department stores and the dome of the Paris Opera house, just a stone's throw away. Behind La Madeleine you can see the majestic peak of the Eiffel Tower.

On the courtyard side, the two other suites combine the charm of slanted ceilings with the luxury of a panoramic view of Saint Augustin Church.

High in the sky, a self-contained apartment that sleeps up to eight can be created by combining one suite on the street side with another on the courtyard side.



A TASTE OF NATURE

The restaurant and bar menus echo the décor with their focus on natural ingredients. An expert in the vitamin-packed flavours of healthy food, the young chef Edgard Prince makes the most of the experience gained at My Free Kitchen, an organic and gluten-free restaurant. He serves healthy and efficient cuisine. The Buddha Bowl is his signature dish. Available as a starter or main course, it comes in a number of versions: meat, fish or vegan and free from cereal-derived vegetable protein. Along with this speciality, there are several other options designed for vegans and people with gluten intolerance. For other diners, the menu has plenty of fine fare to offer. There are recipes that favour simplicity and balance, but also brasserie classics like homemade Croque Monsieur.

The bar has a local flavour. The Galia, Bap Bap and La Parisienne beers are brewed in the area, and the Caron coffee comes from a family-owned roasting company based in Hauts-de-Seine. More surprisingly, the menu features white, red, rosé and sparkling wines from the Ile-de-France terroir, courtesy of La Winerie Parisienne. The organic apples in the fruit juice and Le Coq Toqué cider are made in Normandy. When it comes to cocktails, the signature drinks focus on aromatic or fruity flavours. Examples include Rosemary Gin & Tonic, Thyme Old Fashioned, or Blueberry-Basil Margarita.



KEEPING FIT

In the basement at Le Belleval is an outstanding gym for the use of hotel customers. Under the magnificent vaulted ceiling, they will find cutting-edge equipment as well as a vast multisport area offering a full programme of yoga and fitness classes. The gym also features a sauna, great for unwinding after all that exertion.

TRIBUTE TO THE MADELEINE

In tribute to the madeleine, but also to the author Marcel Proust, who wrote «In Search of Lost Time» at 102 boulevard Haussmann, the chef reinterprets the famous shell-shaped sponge cake. It is available in various savoury versions, as a main course or starter to share, and of course in sweet versions for dessert and as a welcome treat for hotel guests.



HYPER CONNECTION

Le Belleval is very much of its time. It plays the high-speed broadband card on every floor, and in the communal areas. Here, it's easy to find somewhere to connect and charge your laptop or smartphone. Hidden in the furniture, there are sockets everywhere, from bedside to restaurant table.

For those who particularly value discretion, the hotel offers an all-online check-in and check-out service, with the option to download your key to your phone in the form of a QR code. All these details are designed to make life easier for customers. Throughout their stay, guests are cared for by a team with a human touch, who are always on hand to ensure they enjoy their time here.

ABOUT JEAN-PHILIPPE NUEL

«Our work only has meaning if it is a faithful witness to its era.»

A trained architect, Jean-Philippe Nuel is an international name in deluxe interior design for the hotel business.

His most iconic work includes Piscine Molitor and Le 5 Codet in Paris, the Hôtel Dieu in Marseille and Les Cures Marines in Trouville.

Alongside this, he works on architectural projects and collaborates with major design publishers on developing object design.

Passionate about design and always willing to be involved at every level of the project, from architecture to design, Jean-Philippe Nuel sees each project as a human adventure, full of opportunities for meeting and sharing.



© JF Jaussaud

NEWS

- New York office opening in June 2018
- Participation at the Equip'hôtel trade fair in November 2018 : creation of the guestroom scenography for Studio 18
- **Next deliveries :**
 - .2 Expedition Cruise ships for Ponant in June and October 2018
 - .Le Damantin, boutique hotel in Paris, autumn 2018
 - .La Clé des Champs Elysées, 5* hotel residence in Paris, winter 2018
 - .Intercontinental Lyon Hôtel Dieu, 5* hotel in Lyon, spring 2019
 - .Sofitel Villa Borghese, 5* hotel in Roma, spring 2019
- **Ongoing projects :**
 - .Château Fonroque : creation of a winery and renovation of a castle in St Emilion
 - .Château Pavie : creation of guest rooms in St Emilion
 - .Mountain villa in Méribel
 - .Corporate interior: Alto Tower in Paris La Défense, Nodéa in Rueil-Malmaison
 - .Design : range of seats Duomo for Ligne Roset, Abaque lamp for Targetti

Contacts:

Hôtel Le Belleval

16, rue de la Pépinière

75008 Paris

www.belleval-hotel-paris.com

Réervations :

T. +33 (0)1 85 73 36 45

Studio Jean-Philippe Nuel

9 boulevard de la Marne

94130 Nogent-sur-Marne

jpn@jeanphilippenuel.com

T. + 33 (0)1 45 14 12 10

Press contact :

S2H Communication

Sarah Hamon - sarah@s2hcommunication.com

Rebecca Hamou - rebecca@s2hcommunication.com

T. +33 (0)1 70 22 58 55

S2H Communication Miami

Sarah Hamon : sarah@s2hcommunication.com

Vanessa Carreno : vanessa@s2hcommunication.com

Tel : +1 305-904-0909