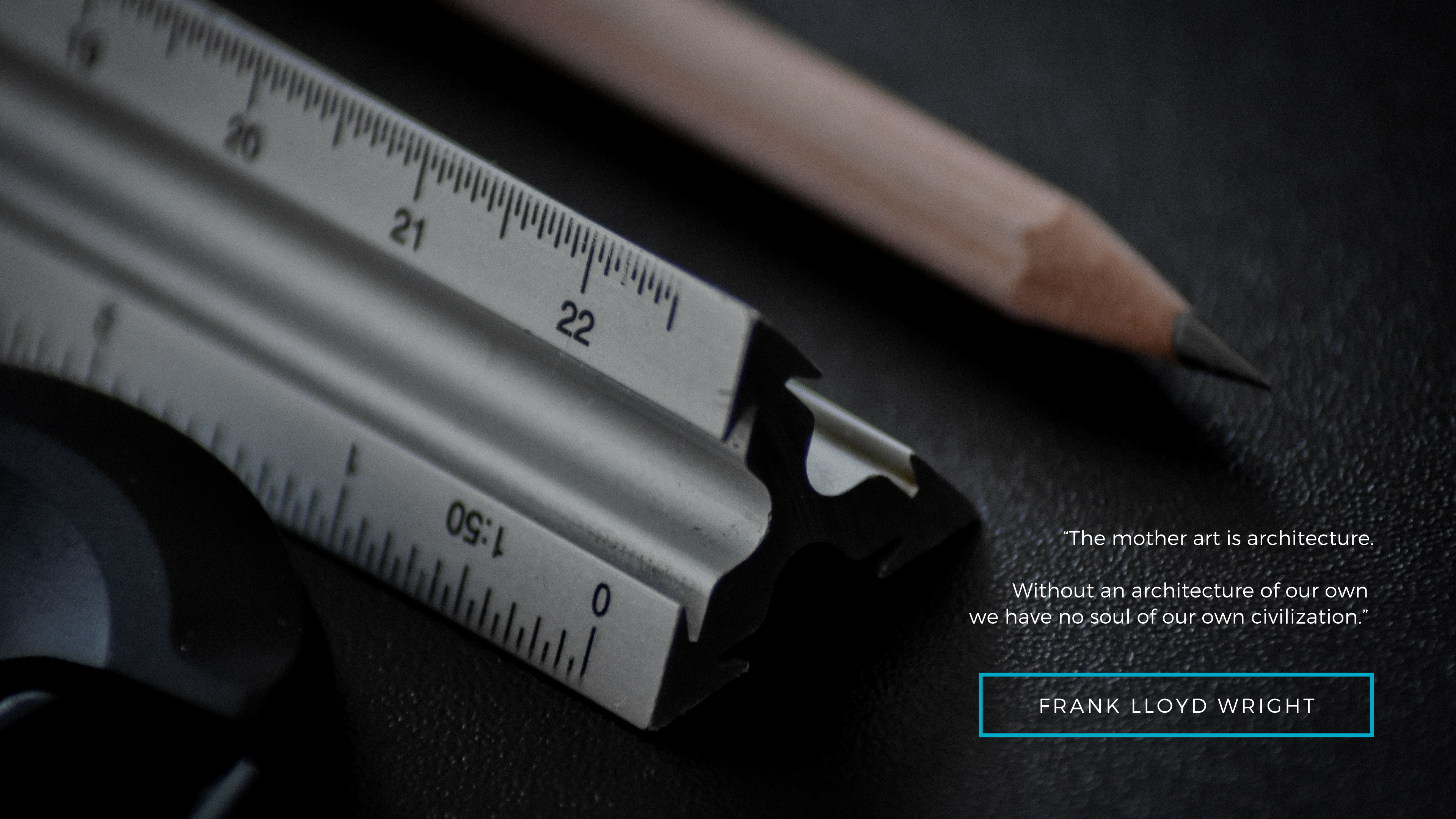

MOSCOW, OSLO, PARIS, LONDON, SAN FRANCISCO

2019 artbook

ALEX NEROVNAYA ARCHITECTURE

en.alex-nerovnya.com

+7 915 358 7873 / alex_nerovnya@mail.ru



“The mother art is architecture.
Without an architecture of our own
we have no soul of our own civilization.”

FRANK LLOYD WRIGHT

our philosophy

the 4 fundamental principles of our design



HONEST MINIMALISM

We create our designs stripping down the clients' needs to their naked core and use simple forms to produce harmonious projects



ALLIANCE WITH NATURE

Our primary focus in the design process is the environment. We strive to create a synergy with the surrounding nature rather than conquer it



INFINITE OPTIONS

Having worked with a variety of customers around the globe we have learned to work with numerous materials and design elements, native to our clients' places of living



UNIVERSAL ACCESSIBILITY

We firmly believe that style and quality should not equal a high price. Our designs are accessible to a wide variety of customers and budgets

01

SOL house

Natural energy for a better life

02

03



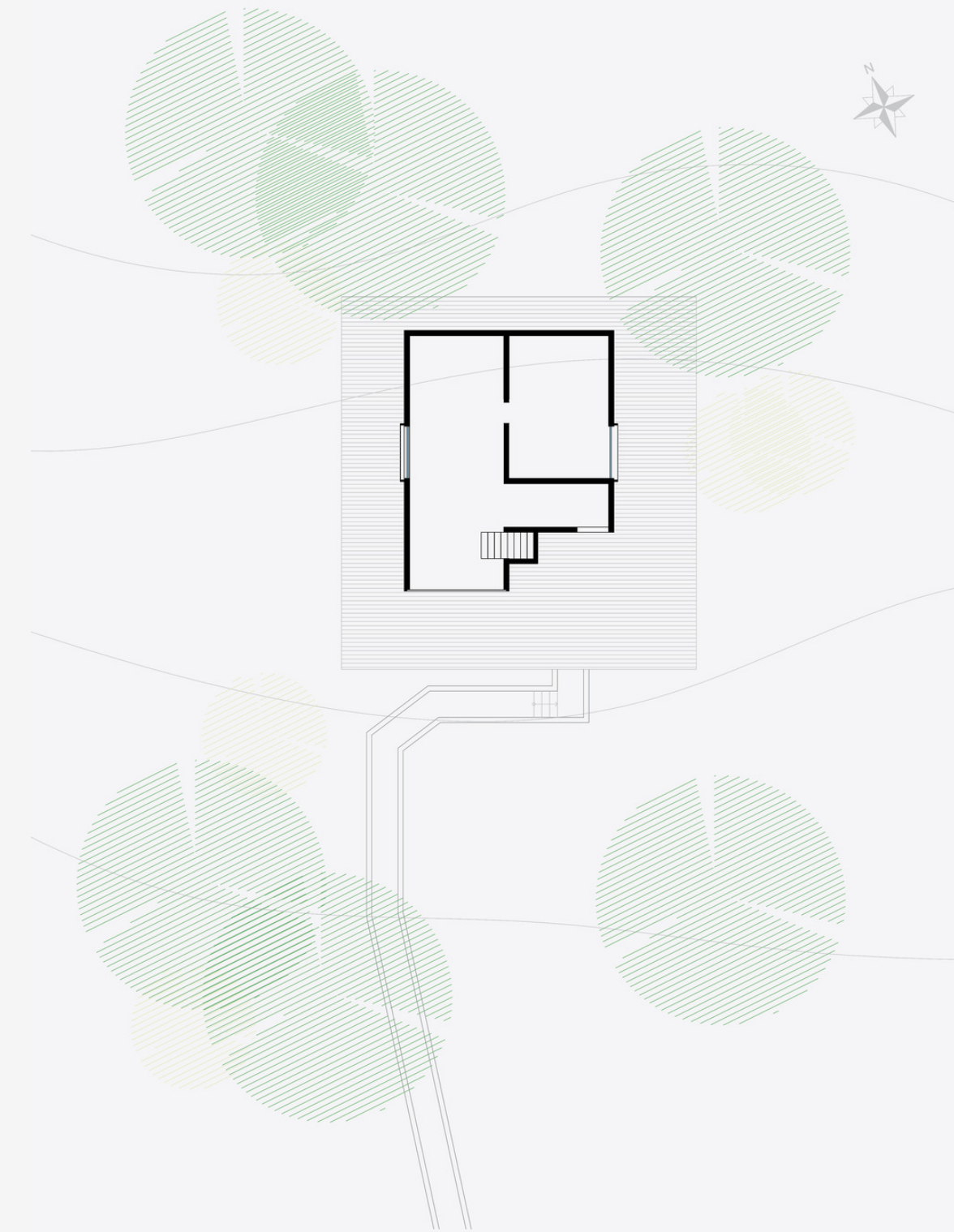
We were inspired by the possibility to merge commonplace classic architectural shapes with the wild environment.

Massive glass walls that have already become a signature feature of Alex Nerovnya designs are utilized as mirror-like screens that, if viewed from certain angles, could make the entire building almost invisible to the observer.

100
m²

glass
wood
cross-laminated timber

2 bedrooms
1 bathroom



SOL house

Thanks to the two-storied tempered glass area, the person inside this building experiences a kind of a broken-fourth-wall effect.

Wherever the person is, he/she never loses connection with the surrounding nature, beautifully portrayed through the panoramic glass.

A major, but largely invisible element of the construction, is a steel structure on the inside of the glass wall that holds it in place, while being almost hidden to the eye.



SOL house



The guests that would be excited to try this house out for a short vacation or a weekend retreat are small families that enjoy getting out in the wilderness, small groups of hikers and tourists that are seeking to combine the comfort of a modern country house with the feeling of being out in the nature.

Throughout the day, the mood and feeling of the interior changes drastically due to a massive role of natural light, penetrating through the glass.

01

02

03

YUKON house

Stunning natural panorama at arm's reach



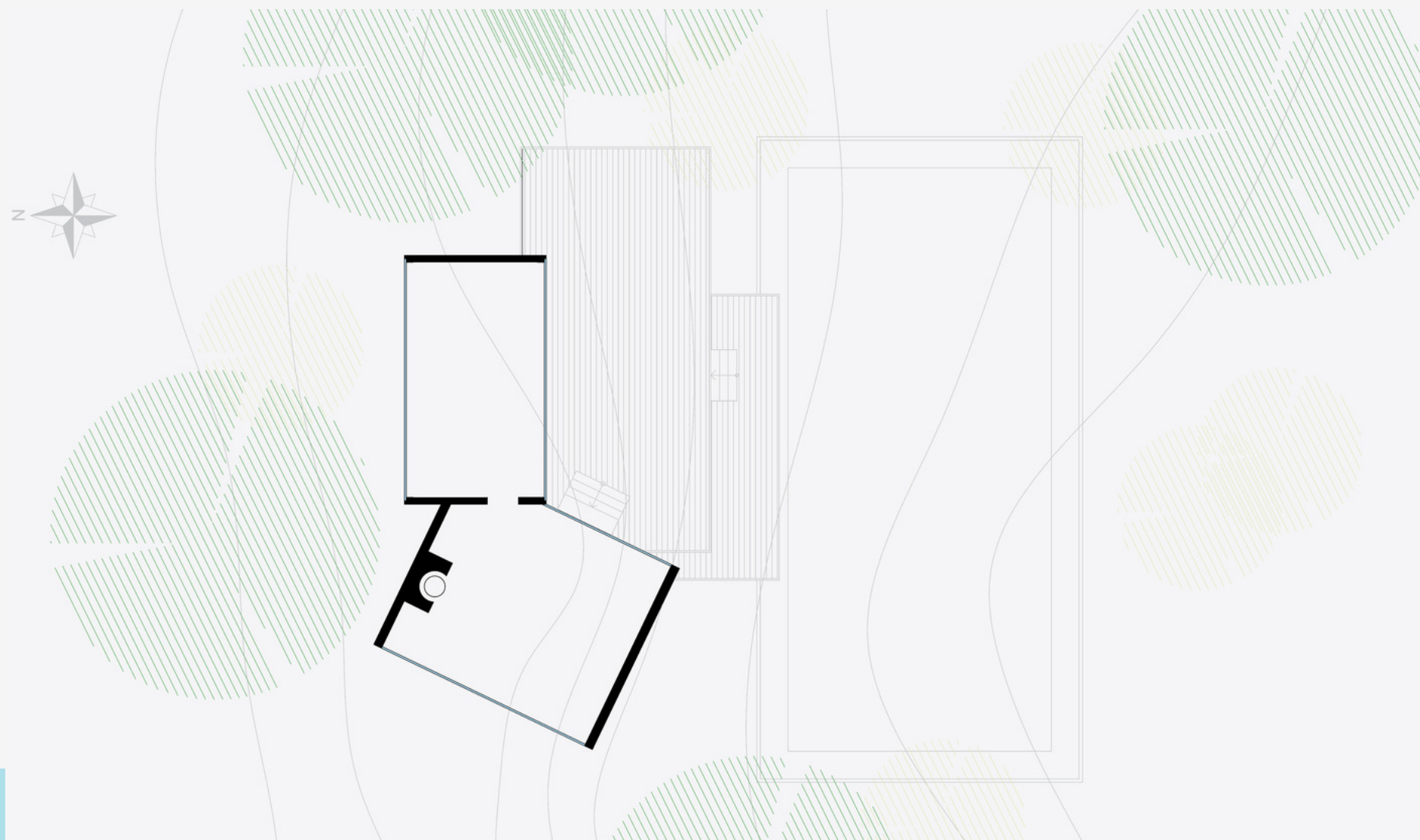
YUKON house

The design of this somewhat larger house was inspired by simple geometric shapes of dwellings in the northern Scandinavia; rudimentary, but tough tools that our ancestors used to survive and thrive in harsh climate conditions.

82
m2

glass
wood
cross-laminated timber

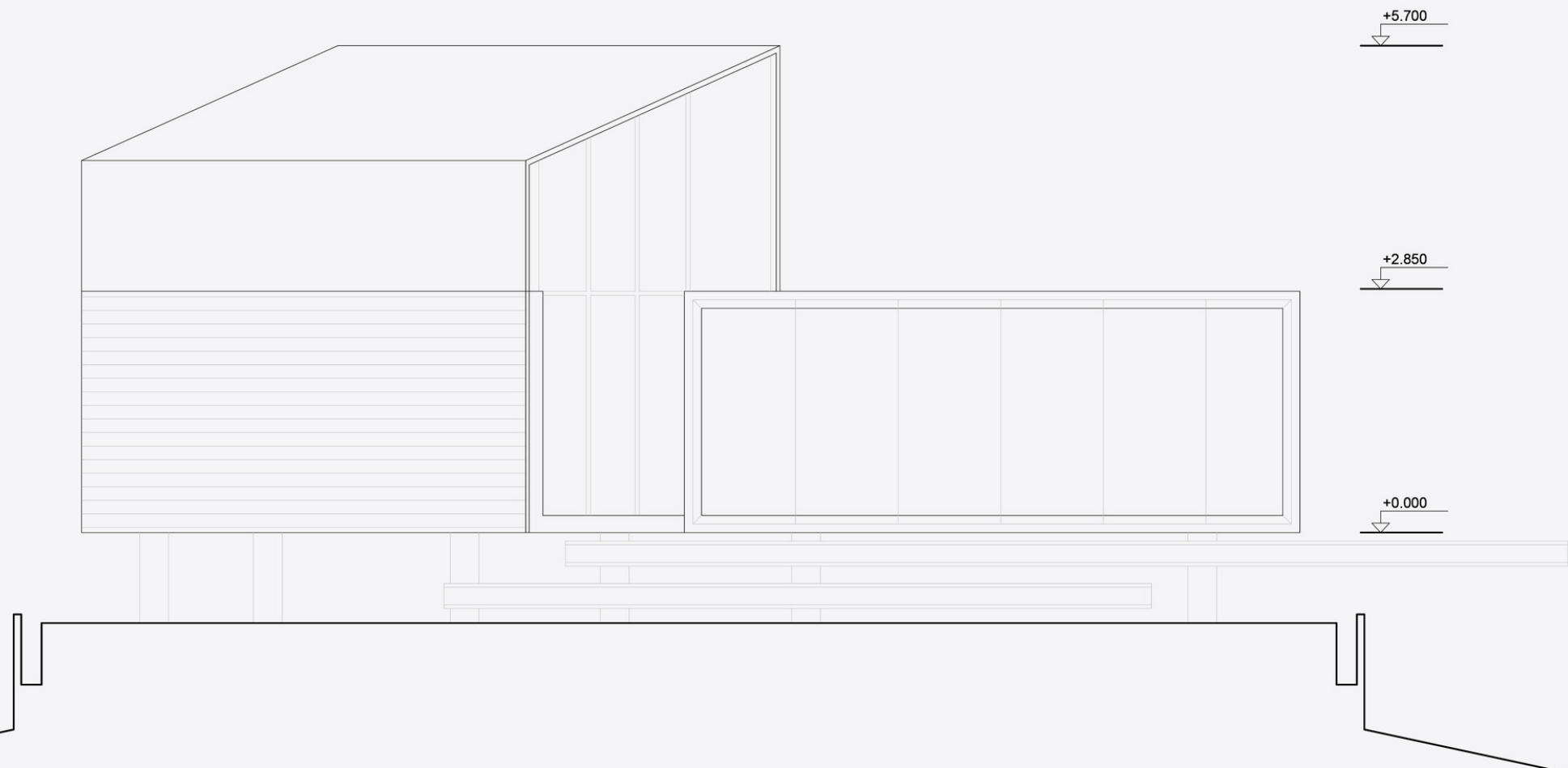
2 bedrooms
1 bathroom



YUKON house

One of the unique features of this project, also shown in numerous other works by Alex Nerovnya Architecture, is a pool of calm water, with depths varying from a few centimeters to over 2 meters, depending on the client's desires.

This design solution places a perfect large mirror surface, adjacent to the building, that creates a visual effect of an upside-down reflected image of architecture.



YUKON house



YUKON house effectively consists of two interconnected structures - the larger one, housing the bedrooms and living spaces, and an additional modular block with a kitchen and a compact dining area.

It is more than suitable for families and groups of tourists of up to 4 people, thanks to a double bedroom layout.

The water-adjacent terrace is perfect for friendly get-togethers, sunbathing, barbecues and long evenings with the loved ones

01

02

03

AMBER house

Extravagant retreat in the wilderness



AMBER house

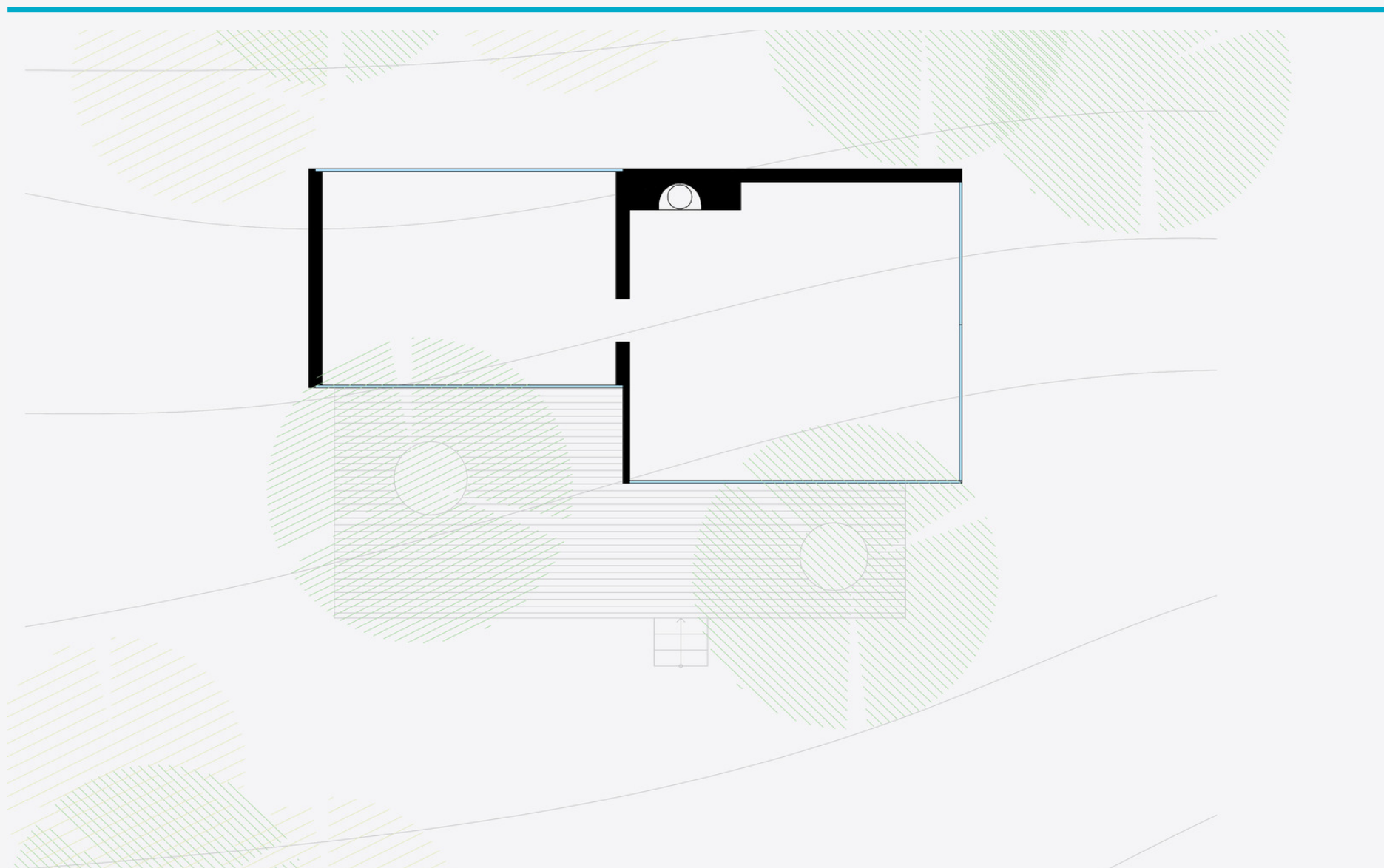
03

The main source of inspiration for this project is a vision of a bonfire, burning in a dark northern forest, akin to a welcoming lighthouse. AMBER house is an extravagant but cozy retreat, ready to provide a traveler with warmth, comfort and tremendous unobstructed views of the surrounding landscape.

46
m²

**glass
steel
cross-laminated timber**

**1 bedroom
1 bathroom**



AMBER house

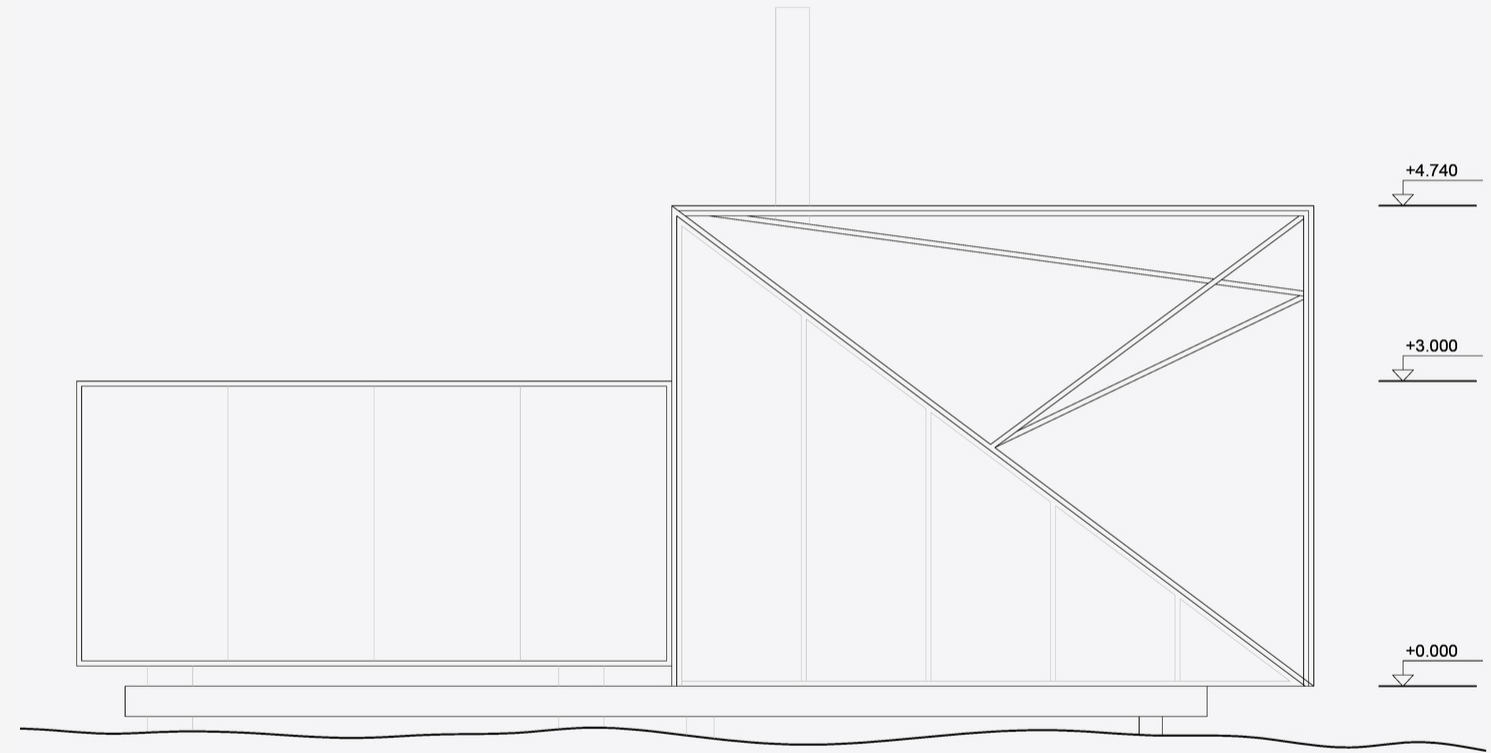
03

The main eye-catching feature of this house is a large glass shard, encasing the main living space. This “room” effectively lacks a roof in its traditional sense, which allows for almost 360 degrees penetration of natural light and stunning landscape.

The interior uses a great deal of wooden finishes, spreading warmth of the fireplace, which is the centerpiece of the living space. From further away, the glass shard of the main room, lit up from the inside by the fireplace and a number of artificial lights, reminds the observer of a glowing amber gem.



AMBER house



AMBER house is split into two parts - the stunning glass crystal of the living space and the “service” space that includes a hallway, a compact kitchen and a toilet.

Tourists who decide to try this unusual layout for a weekend somewhere in the woods will appreciate the possibility to fall asleep bathed in moonlight, while observing the constellations in the night sky.

An unusual AMBER house design is created primarily for active tourists, who enjoy being in the wilderness, and for couples, looking for a romantic getaway far from neighbours’ eyes.

what's next for

ALEX NEROVNYA ARCHITECTURE

October 2019

the launch of our new website, en.alex-nerovnya.com, and our blog, detailing the creative process behind our designs

November 2019

the launch of a Youtube channel, showcasing the conceptual, design and construction stages of our ongoing projects

December 2019

a first preview of our most ambitious project to date - a unique modular and energy efficient village

visit en.alex-nerovnya.com for the latest updates on current projects and exclusive content

+7 915 358 7873 / alex_nerovnya@mail.ru
