



I·HOUSING II

I·HOUSING II

2C House

Location Partanna, Sicily, Italy

Site area 1,100m²

Bldg. area 220m²

Total floor area 255m²

Architecture design Studio 4e _ Fabio Costanzo, Maria Rosaria Piazza

Photographer Angelo Geloso

A flowing dynamism in line with the purposes of the environment is behind the design of this house located in southwestern Sicily and built for a young couple interested in architecture and art.

Starting from passageway management, the different rooms have been divided according to time and different usages by enlarging or contracting the provided spaces according to the usage dynamics and the possible interactions established by the users. All this is achieved by the use of a few interventions, as to immediately orient who moves inside, as the continuous wall in dark plaster that unites the living and the lunch area and, with a slight rotation relative to the axis of the house,

generates at each moment different and suggestive views.

The toilet block, at the center of the house, consists of the laundry and guest bathroom. Their entrances are perfectly camouflaged by invisible doors, as not to alter the continuity of the ribbon wall.

The house volumes are fluid and versatile due to the large sliding doors separating the kitchen from the study. A big multifunction piece of furniture in Zebrano wood, set at the center of the house and including a wardrobe and two sliding etched glass doors conceived as a real landscape object, is an important visual linchpin -recognizable from the different rooms.

The modularity of the light, the center of the perceptual and sensory research, used in this instance as project matter, brings together the different rooms of this house and elicit different emotional states. So it is possible to move from the dim light of the entranceway into the brightness of the living room with large glass windows from where it is possible to admire the picturesque sight -enhanced as a texture of a strong visual impact- of the rock wall coasting the house. A white cabinet with wood inserts, customized as the whole furniture, hides the television set.

The sleeping area on the first floor is accessed via an opencast spiral staircase made with selected black granite. Three

bedrooms and two bathrooms can be found here. The main bedroom, designed as a suite, has inside a walk-in closet, a large bathroom clad in dark wood, furnished with a hydro-massage bath tub and a shower, and a sun terrace for relaxation and contemplation of the natural landscape.

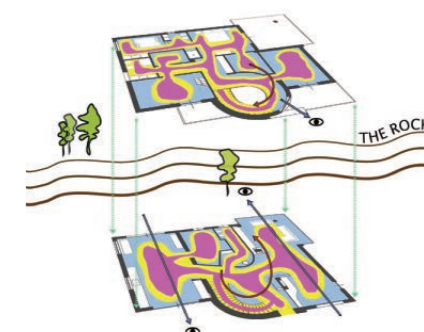


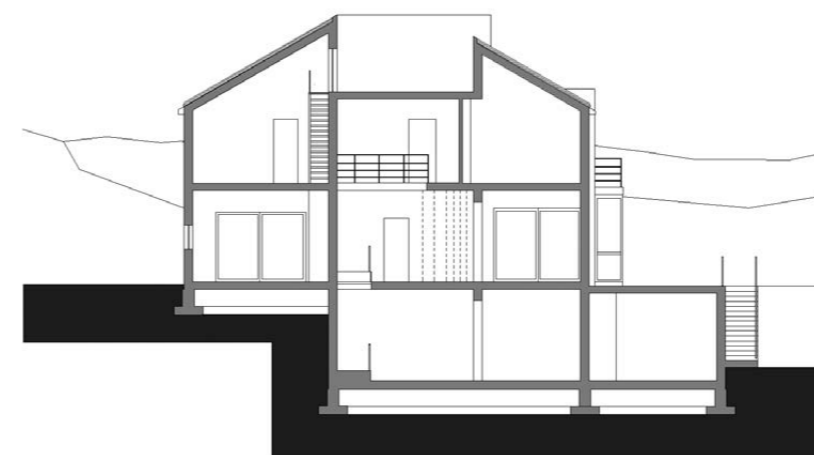
DIAGRAM OF HORIZONTAL AND VERTICAL CIRCULATION THROUGH THE HOUSE

Diagram

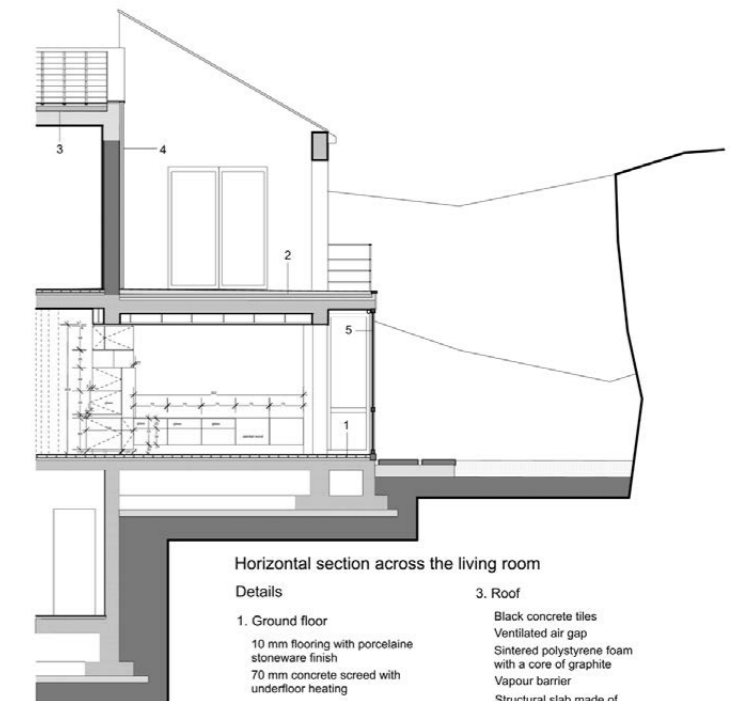




Sketch - Main front



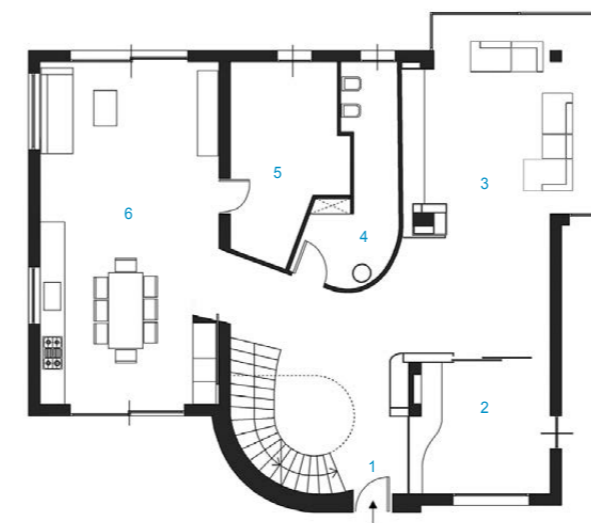
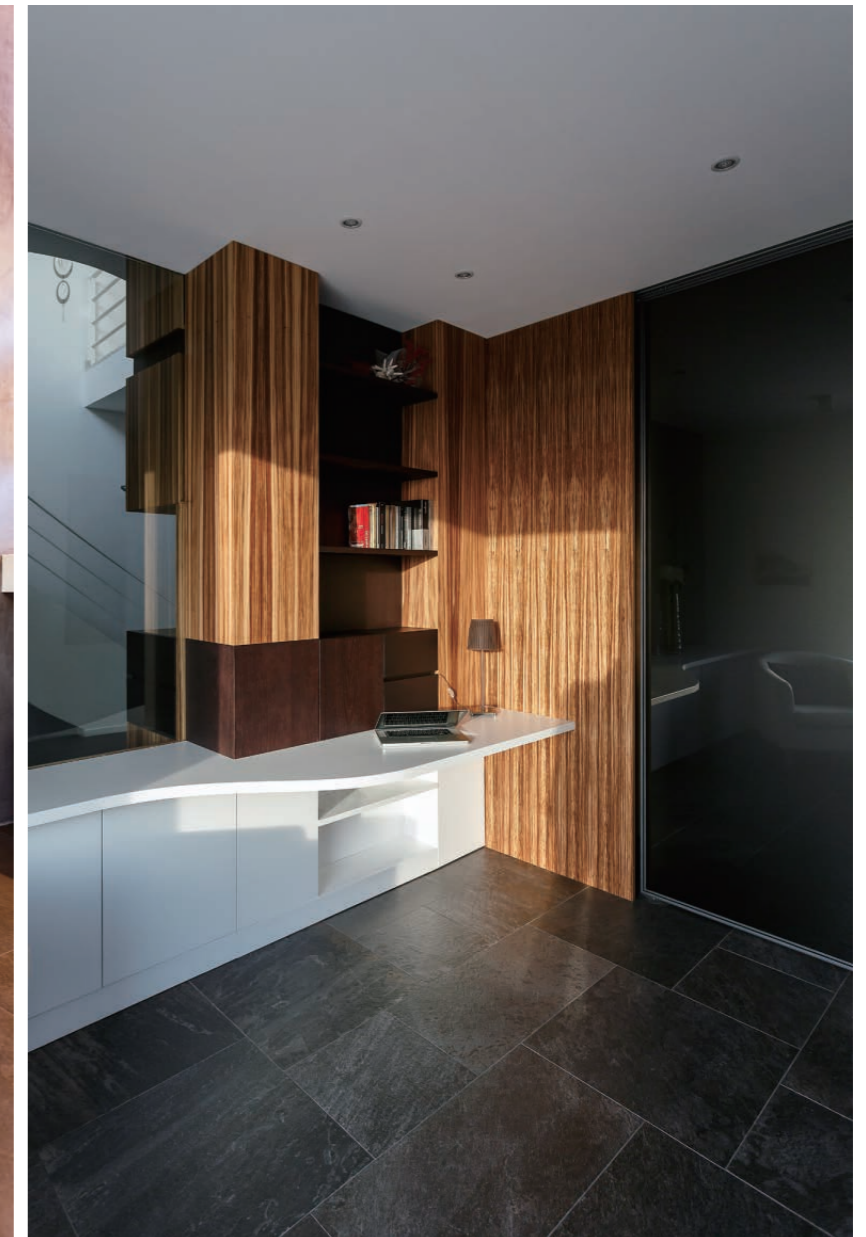
Section



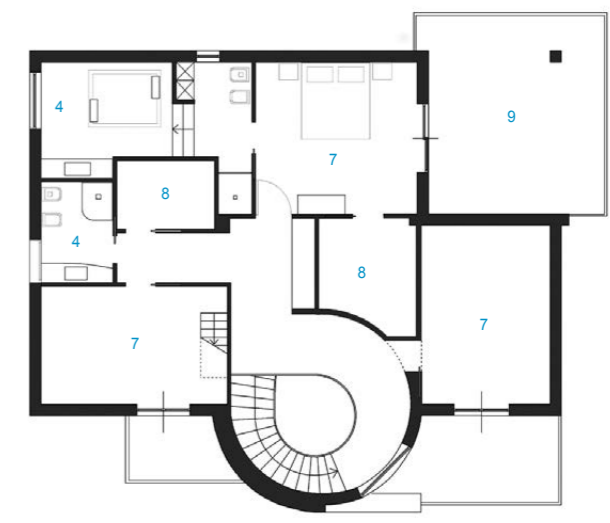
Horizontal section across the living room

- Details**
- 1. Ground floor**
 - 10 mm flooring with porcelain stoneware finish
 - 70 mm concrete screed with underfloor heating
 - 80 mm screed for service integration
 - Structural slab made of blocks and reinforced concrete
 - 2. Terrace's floor**
 - 10 mm flooring with porcelain stoneware finish
 - Waterproofing layer
 - Inclined concrete screed
 - 70 mm thermal insulation made of expanded polyurethane
 - Vapour barrier
 - Concrete over grave rolled
 - Structural slab made of blocks and reinforced concrete
 - Plaster finish
 - 3. Roof**
 - Black concrete tiles
 - Ventilated air gap
 - Sintered polystyrene foam with a core of graphite
 - Vapour barrier
 - Structural slab made of blocks and reinforced concrete
 - Plaster finish
 - 4. Vertical opaque enclosure**
 - Water-resistance plaster applied with float
 - 50 mm polyurethane insulation
 - Air cavity
 - 250 mm hollow brick
 - Plaster finish
 - 5. Fixed wooden window with double glazing**
 - Internal roller blind system

Section detail



First floor plan



Second floor plan

- 1. Entry
- 2. Study room
- 3. Living room
- 4. Bathroom
- 5. Laundry room
- 6. Kitchen
- 7. Bed room
- 8. Closet
- 9. Terrace