

# UK HOUSE LOBBY & BASEMENT

PRESS RELEASE

08.12.2022



## TECHNO-BAROQUE CORPORATE ARCHITECTURE: CHRIST & GANTENBEIN COMPLETE A NEW LOBBY IN LONDON

UK House, a mixed-use building located at a prestigious West End address on Oxford Street, stands out as a landmark in the city center. Built in 1906, the grade II listed building was adapted in the 1970s and became an office block. Two of its original facades remain, revealing a playful composition of baroque forms and Edwardian elements. By contrast, the other facades exhibit a modern style.

The Edwardian scale and grandeur of the historic facades set the building apart and speak of an age of British history when the highest global ambitions were manifest in the city's physical fabric. Christ & Gantenbein worked with this past to generate its vision of corporate architecture in the 21st century: bold, futuristic, open, communicative, yet steeped in history.

### A GENEROUS SEQUENCE OF SPACES

The lobby's entry features large windows clad in bronzed metal which blend in with existing retail facades on Oxford Street. Revolving doors in chromed stainless-steel establish a relationship with the mirrored columns inside. Installed on the right wall of the lobby, an artwork by Wolfgang Tillmans corresponds to the exterior and the interior alike.

The space of arrival consists of a front desk and an ancillary space for meetings and exchange, with an adjacent coffee point. The lobby walls formally reference the Baroque curves of the UK House facade, and its "apse"-like endings prevent abrupt confrontations. Polished chrome elements, such as circular columns or elevator doors, continue throughout. In an apparent historical reference, a combination of white and black stone forms checkered marble flooring. The suspended metal grill ceiling includes linear light that follows the area's primary spatial directives. Bespoke ceramic tiles cover the walls, richly textured, but subtle and neutral in color, devising a robust backdrop to the dramatic forms of the new lobby.

Connected via new staircases and elevators, the unique blend of hyper-modern and historical elements continues below ground. Epoxy floors with a black and white pattern demarcate the cycle route and lead to the bike store. A changing lobby, the central space for tenants arriving on two wheels, is defined with circular accents. Adjacent facilities with showers and lockers provide functional, yet luxurious facilities.

An informal array of objects designed by Christ & Gantenbein is strategically placed throughout these areas. British Renaissance and Baroque architecture once again influenced their forms, shapes, and colors.

### CORPORATE ARCHITECTURE FOR THE 21ST CENTURY

Christ & Gantenbein's lobby design for UK House in London responds to the increasing need for communicative and accessible corporate architecture. Addressing both tenants and a broader public, this highly visible and dynamic new space welcomes a multitude of users into a groundbreaking place of arrival, a first of its kind in London.

Emanuel Christ: "We conceived this lobby as a location full of hospitality, with a unique mix of baroque and techno-futuristic elements. The result is a creative spatial identity and generous sequence of rooms that offer high-quality experiences for the tenants and visitors alike."

Working on their second project in London after the Swiss Church, the architects freely appropriated classical forms and symbols, designing a lobby that defines UK House's central hub and fulfilling a function crucial to urban life: allowing communication and interaction to unfold.

## FACTS AND FIGURES

**LOCATION**

London, United Kingdom

**CLIENT**

Flametree Properties Limited

**YEAR**

2019-2022

**STATUS**

Built

**PROGRAM**

Reception, Lobby, Tenant Facilities and Amenities

**SIZE**

1270 m<sup>2</sup> (GFA)

**TEAM**

Emanuel Christ, Christoph Gantenbein; Tabea Lachenmann, Loes Martens,  
Alessandro Cairo, Edward Nicholson

**PLANNING**

tp bennett, Blue Sky Building, Clarke Nicholls Marcel,  
Steensen Varming / Boom, Licht Vision, OFR, Hann Tucker, Cundall

## CONTACT

For hi-res imagery, interview requests, and further info,  
please contact Christ & Gantenbein.

[pr@christgantenbein.com](mailto:pr@christgantenbein.com)  
+41 61 260 90 20

[christgantenbein.com](http://christgantenbein.com)  
[instagram.com/christgantenbein](https://www.instagram.com/christgantenbein)

## IMAGES



Exterior. Photo © Thomas Adank



Exterior. Photo © Thomas Adank

## IMAGES



Lobby Reception. Photo © Thomas Adank



Lobby with Tillmans Piece. Photo © Thomas Adank



## IMAGES



Lobby with Tillmans Piece. Photo © Thomas Adank



Lobby. Photo © Thomas Adank

## IMAGES



Elevator Hallway. Photo © Thomas Adank



Changing Lobby. Photo © Thomas Adank



## IMAGES

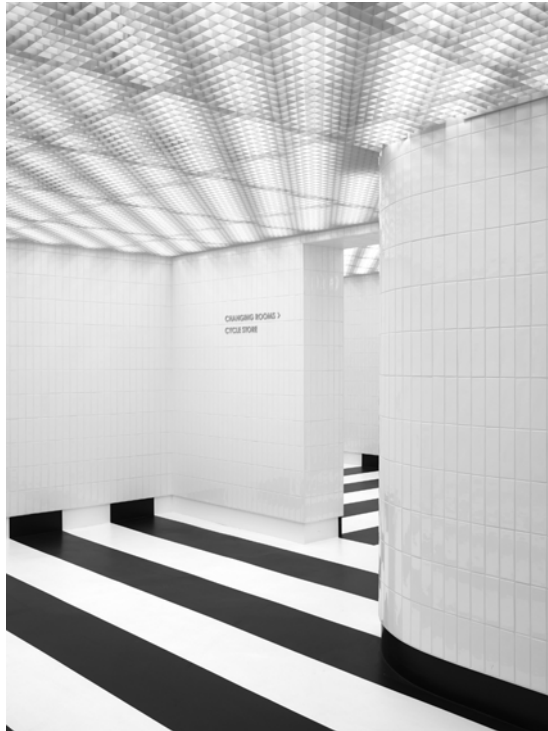


Changing Lobby. Photo © Thomas Adank



Hallway. Photo © Thomas Adank

## IMAGES



Hallway. Photo © Thomas Adank



Bike Parking. Photo © Thomas Adank

## IMAGES



C&G furniture. Photo © Thomas Adank



Exterior. Photo © Thomas Adank

## IMAGES



Details, Furniture. Photos © Thomas Adank



Details. Photos © Thomas Adank

# IMAGES



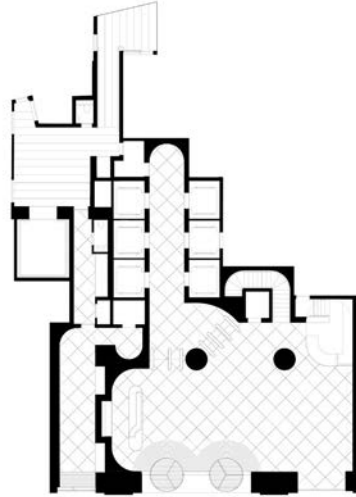
Details. Photos © Thomas Adank



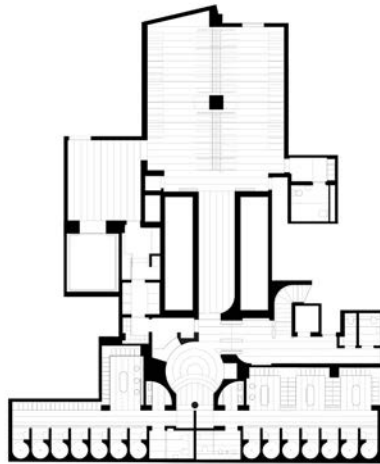
Details. Photos © Thomas Adank



## DRAWINGS

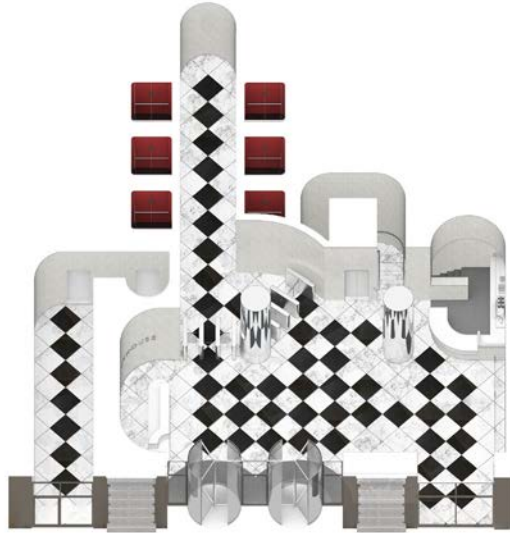


Ground Floor. © Christ & Gantenbein

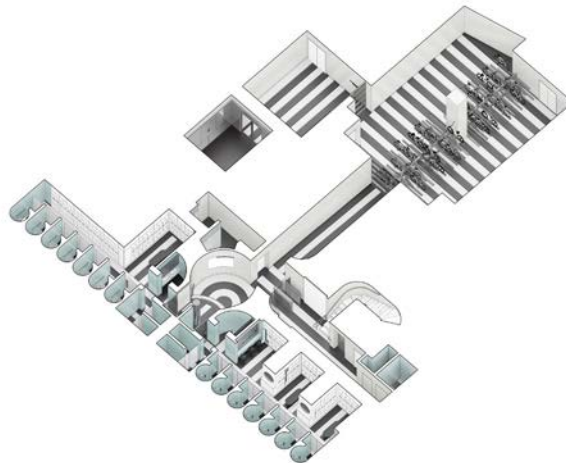


Below Ground. © Christ & Gantenbein

# DRAWINGS



Axo © Christ & Gantenbein



Axo © Christ & Gantenbein