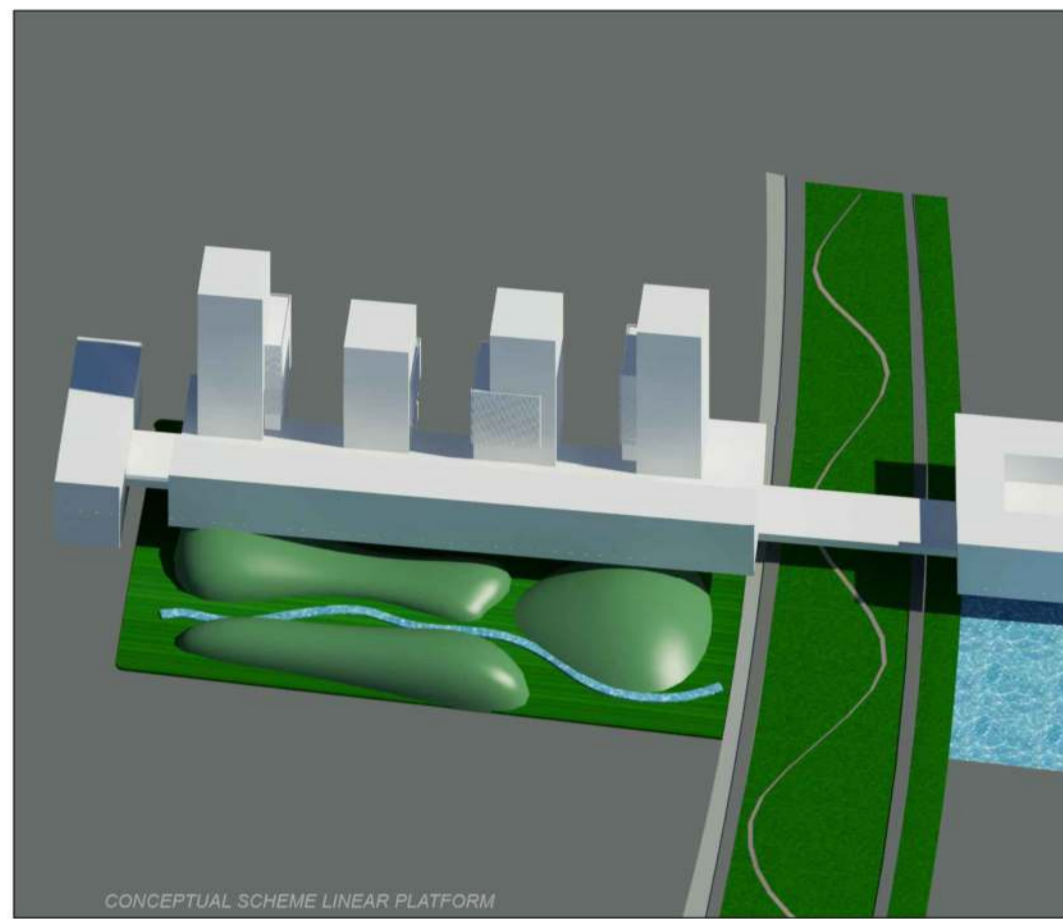


SYSTEM OF THE LINEAR PLATFORM



Groundfloor level - SITE PLAN 1:1000

Green Surface Pedestrian area and cycle path Water surface Vehicular and railway Surface



CONCEPTUAL SCHEME LINEAR PLATFORM



VIEW BELOW PLATFORM



VIEW ON PLATFORM

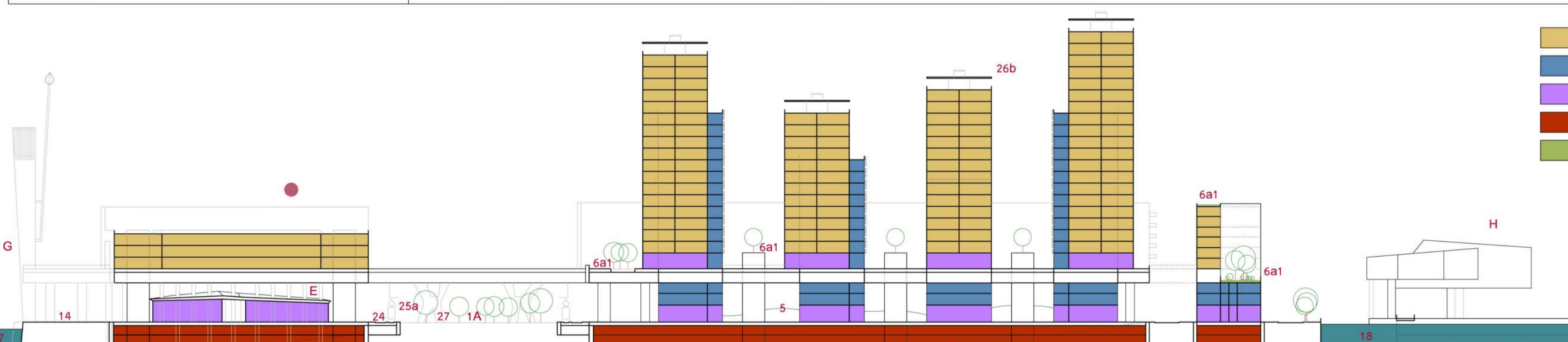
LEGEND

- A- Pavilion for productives and environmental sustainability activities
  - 1- Car-Bike sharing
  - 2- Environmental sustainability activities (biodiversity products, training workshops for energy saving and recycling, preparation of products for the energy saving and recycling)
  - 3- Free use pavilion for experimenting with new forms of production and leisure in start-up mode
- B- Large space for commercial, management, recreational activities and public services (supermarket, shopping center, bank, fitness area, cinema, media library, hospital, surgery, school, post office, etc.)
- C- Shop detail
- D- Entrance to the settlement system with mixed functional (integration buildings for the free market, subsidized housing, etc.) / social services: D1 social center, D2 mini accommodation and housing communities with assistance to seniors, D3 counseling, D4 additional cultural activities, D5 free spaces for common use)
- E- Commercial village
- F- Open-air market
- G- Belvedere landmark with photovoltaic and wind power generation
- H- House of Music
- I- Museum of the environmental sustainability
  - 1- Public Park:
    - 1a wooded linear park
    - 1b woods
    - 2- Row of trees
    - 3- Green traffic island with lawn
    - 4- Bined trees
    - 5- Green hill with trees
    - 6- Public garden with trees:
      - 6a roof garden 6 / a roof gardens common
      - 6b garden to the ground floor
    - 7- System of public pedestrian squares:
      - 7a covered square
      - 7b not covered square
      - 7c avenue
      - 7d belvedere terrace
    - 8- Pedestrian areas on the waterfront (Shing Mun River Channel- Sha Tin Hoi):
      - 8a pedestrian surface
      - 8b broad riverbank steps
      - 8c photovoltaic public lighting:
        - 8c1 high
        - 8c2 low
    - 9- Promenade on the riverbank
    - 10- Sidewalk
    - 11- Pedestrian traffic island
    - 12- Crosswalk
    - 13- Cycle lane:
      - 13a photovoltaic surface
      - 13b three-component polymer surface in a reduced environmental impact
      - 13c clay stabilized surface
    - 14- Dock mooring boats
    - 15- Water surface with fountains and nebulizers
    - 16- Water lane
    - 17- Basin marina
    - 18- Basin of Culture un-navigable
    - 19- Access roads: urban and suburban node communication
    - 20- Urban roads network for the connection between neighborhoods
    - 21- Local roads with access to underground parking of residences, commercial and office areas
    - 22- Vehicle ramp
    - 23- Vehicular underpass
    - 24- Service roads and emergency
    - 25- Service roads for electric public transport
      - 25a tram
      - 25b bus
    - 26- Photovoltaic roof:
      - 26a photovoltaic shelter
      - 26b photovoltaic canopy
    - 27- Metal trellis

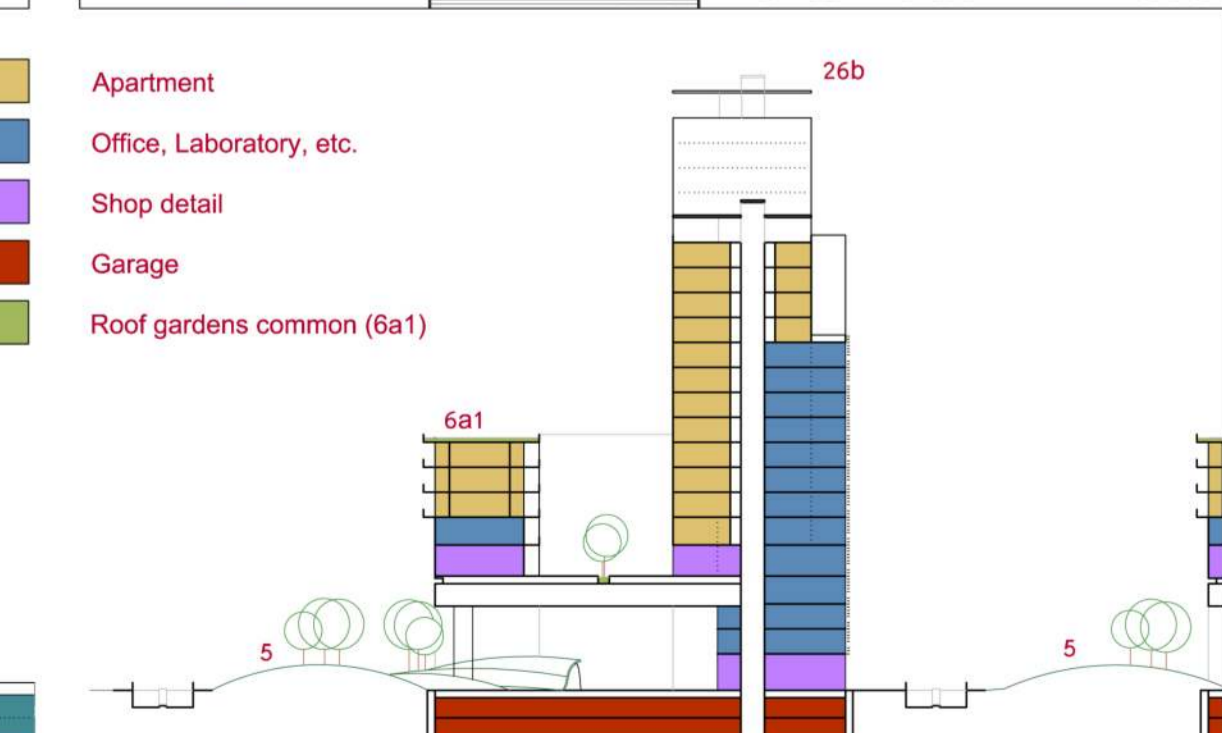
CLASSIFICATION HOUSING 1:200



Level +15.10/+19.60 PLAN 1:500



LONGITUDINAL SECTION C-C 1:1000



CROSS SECTION D-D 1:1000