

Greenbelt factory in Emilian countryside, Ferrara (Italy). Innovate by harmonizing the man's action to the Nature's order



'Agricultural gallery' towards the rural horizon as the seasons and light conditions change

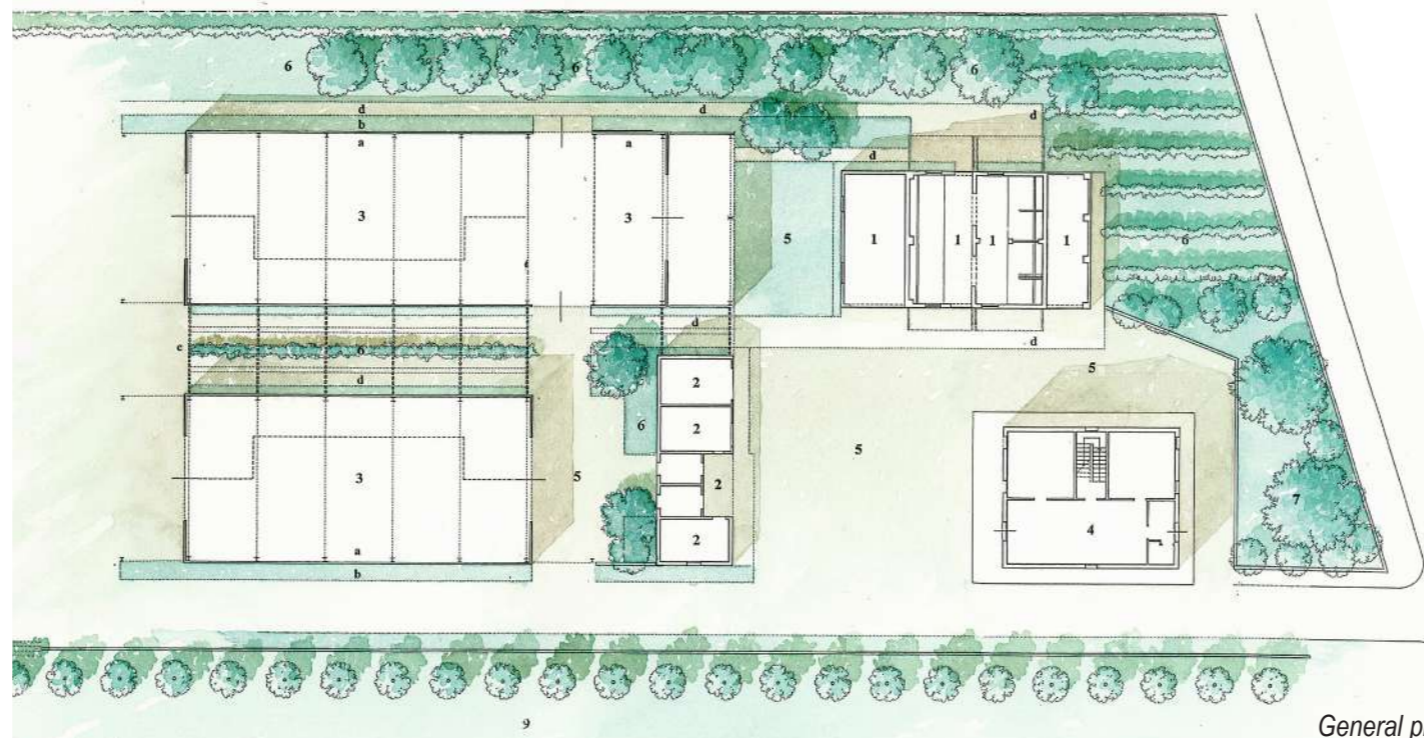


Perspective section on the agrarian gallery

Internal paths, cuts and visual telescopes ("long views") contribute non only to the logical and productive reorganization of the spaces, but also to sensory well-being of those who work there. **The relationship between the internal spaces and external pertinences to the settlement (vegetable gardens and introverted patios) is the search for functionally adequate and spatially rich living and working conditions, an empathic relationship between man and the space in which he lives and works.**



Vegetable gardens and internal patios



General plan

- 1) Old stables and cowsheds;
- 2) Cellars and depots;
- 3) Buildings used for production;
- 4) Main dwelling;
- 5) Internal courts;
- 6) Gardens and vegetable gardens (fruit trees: apricot, cherry, peach, hazelnut, plum trees and vineyards; herbs: rosemary, creepers, seasonal cultures; hydrating system with drop system);
- 7) Existing garden;
- 8) Fields surrounded by lines of poplar trees



The aerial pergola whose construction elements measure the passage of time in the form of sundials