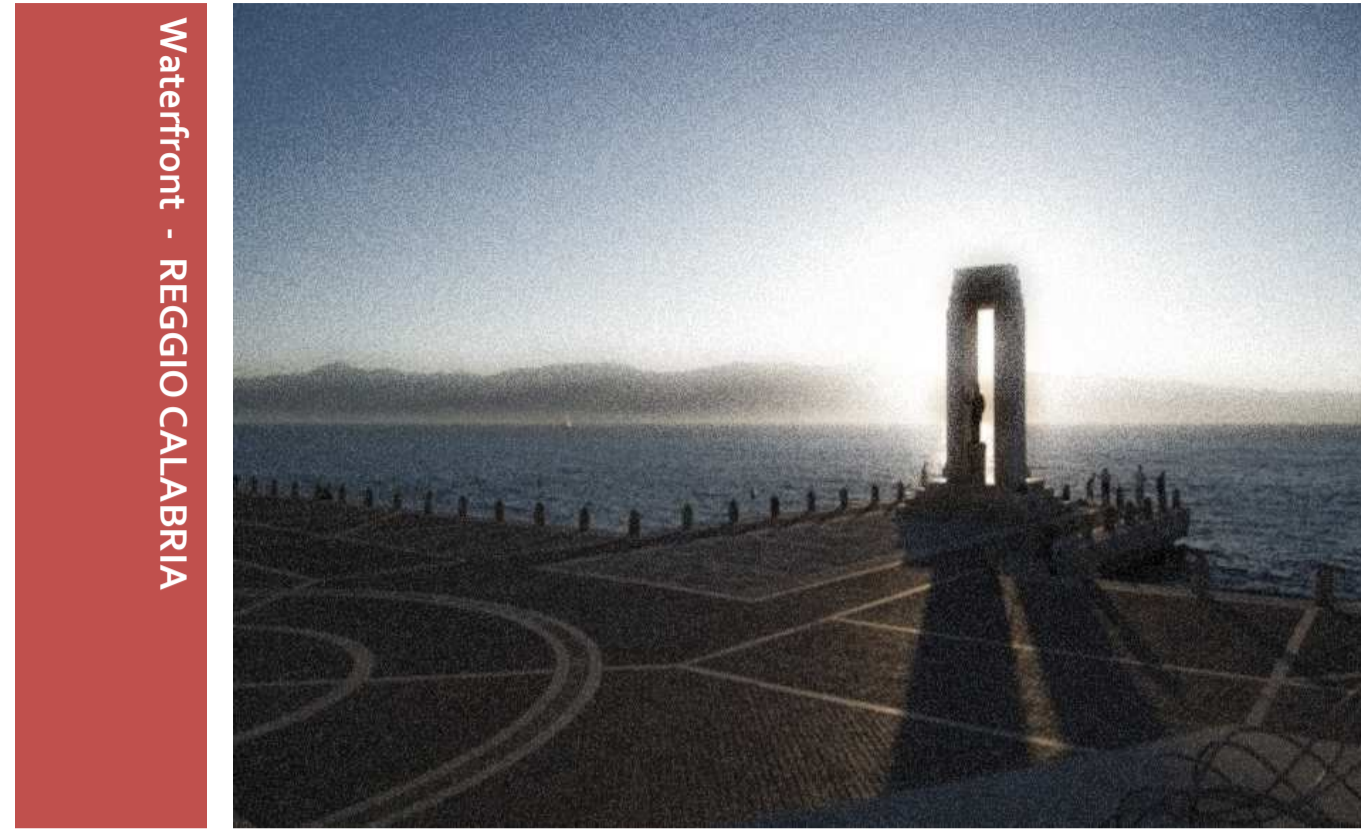


**LOCATION**

The toll booth will be located on the Highway connecting **SALERNO** to **REGGIO CALABRIA** (SA-RC) in the southern part of Italy.

The SA-RC is a part of the A3 Highway connecting Naples to Reggio Calabria, it's a 445 km long highway managed by ANAS S.p.a.



Waterfront - REGGIO CALABRIA



Atrani - SALERNO

**THE GOAL**

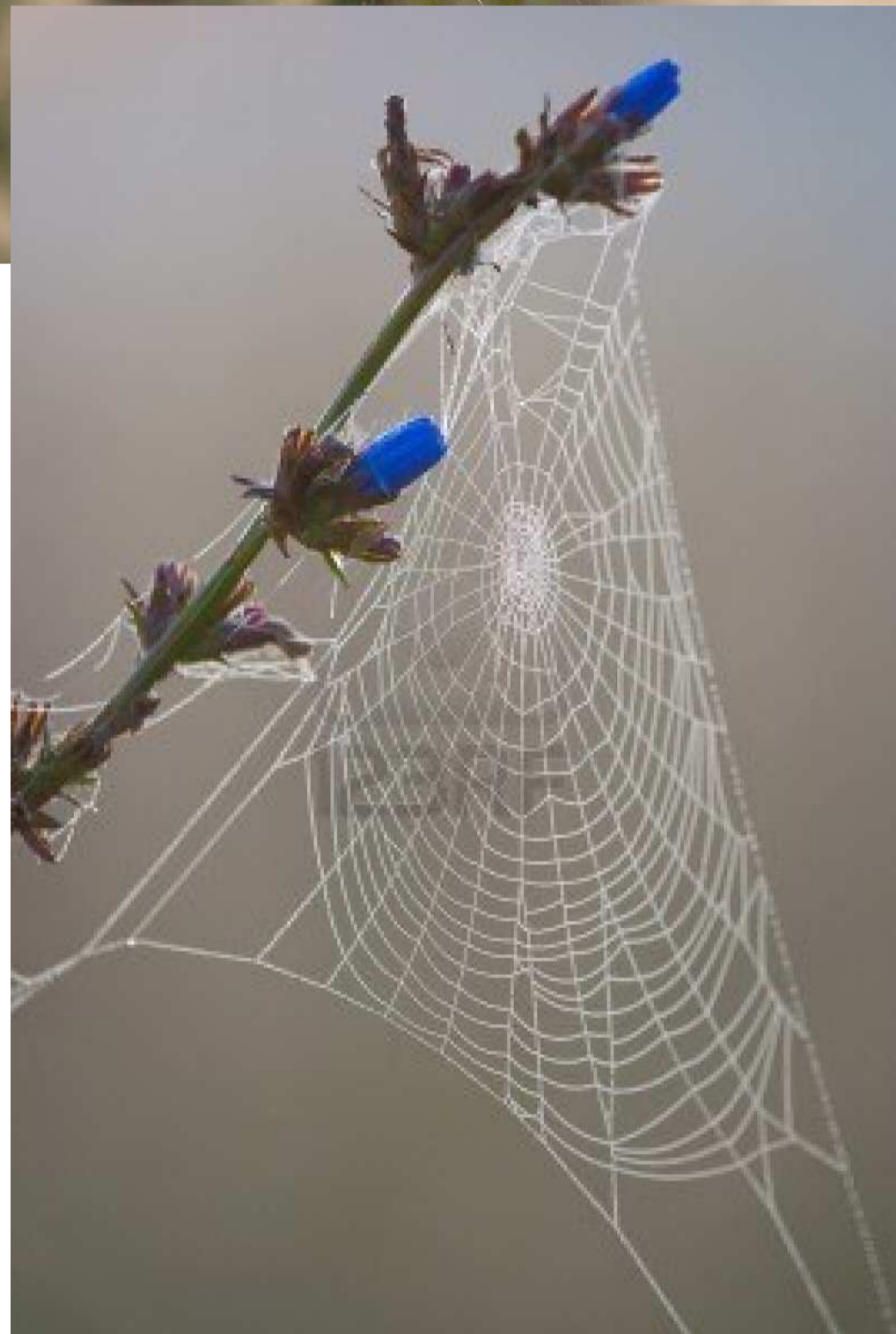
The goal is to design a **COVER** for a Toll Booth plaza on a highway in a rural environment. It is on a level terrain. It has to cover at least **4** incoming lanes and **4** outgoing lanes.

**CONDITIONS**

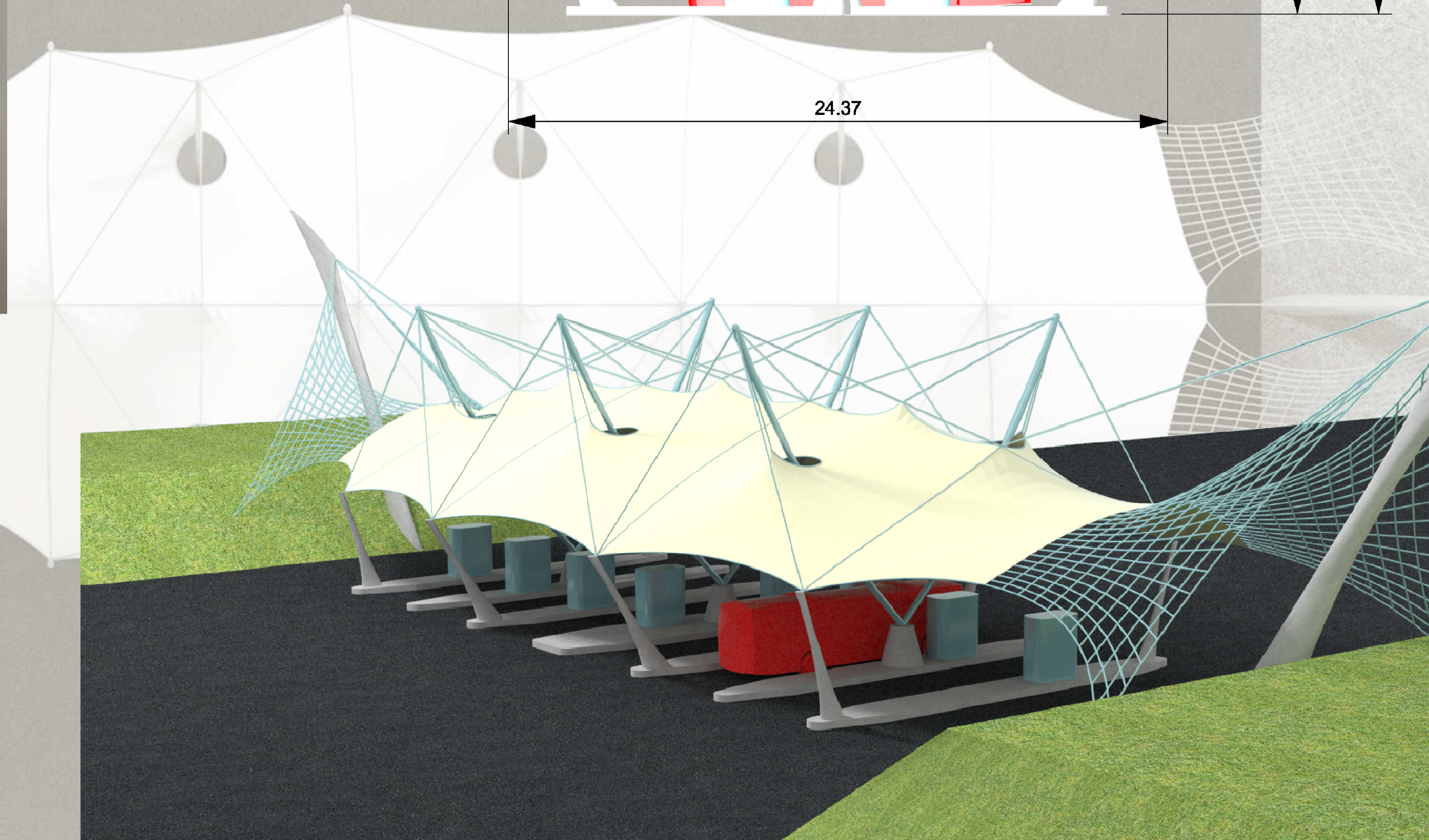
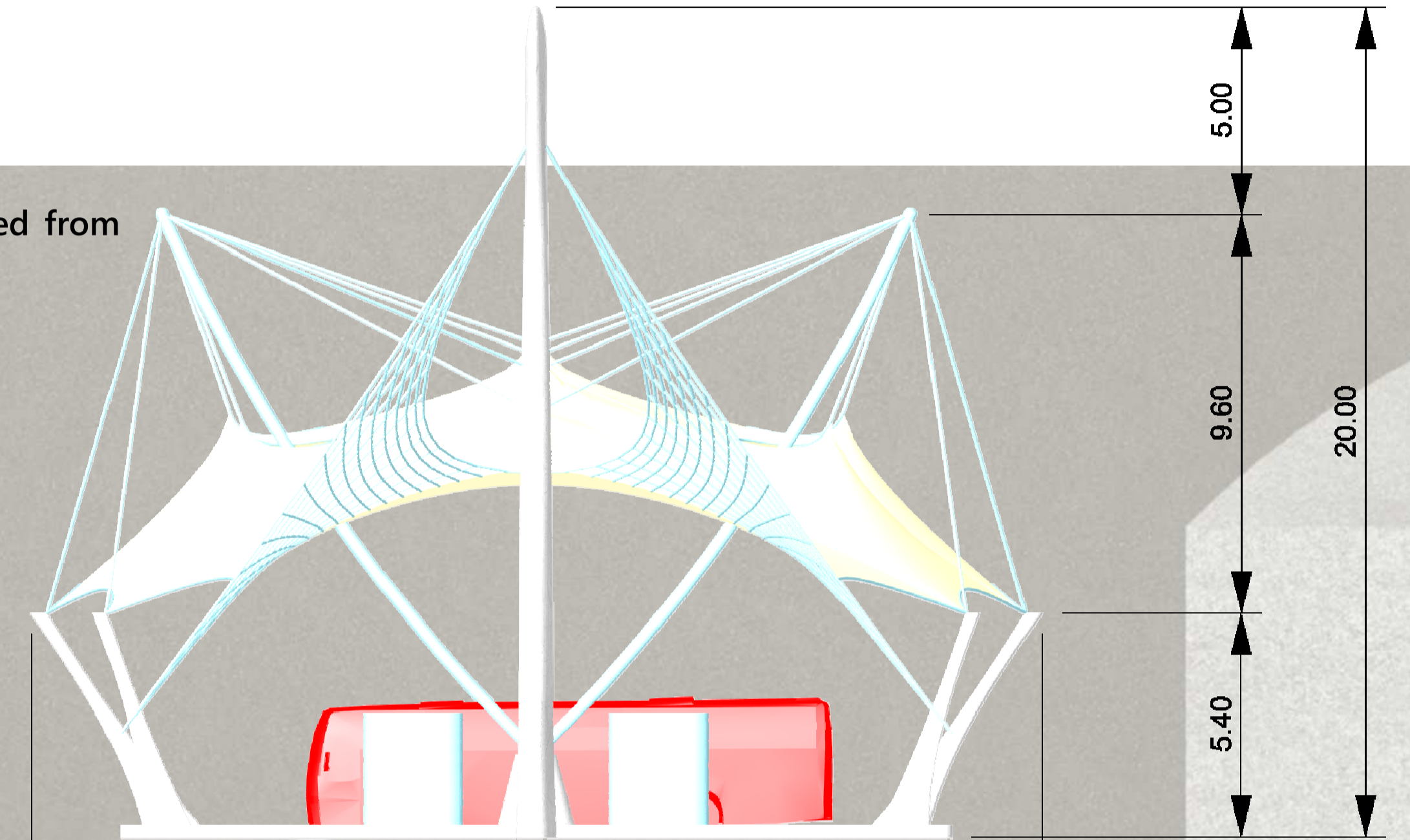
The proposal must fulfill the **TECHNICAL CONDITIONS** respecting the dimensions necessary for the toll booth to function properly. This means the appropriate **WIDTH** and **HEIGHT** has to be respected to be able to let trucks and buses to pass..



The **BASIC CONCEPT** is that of a **LEAF** trapped inside a **SPIDERWEB** hung to 2 side flower **STEMS**.

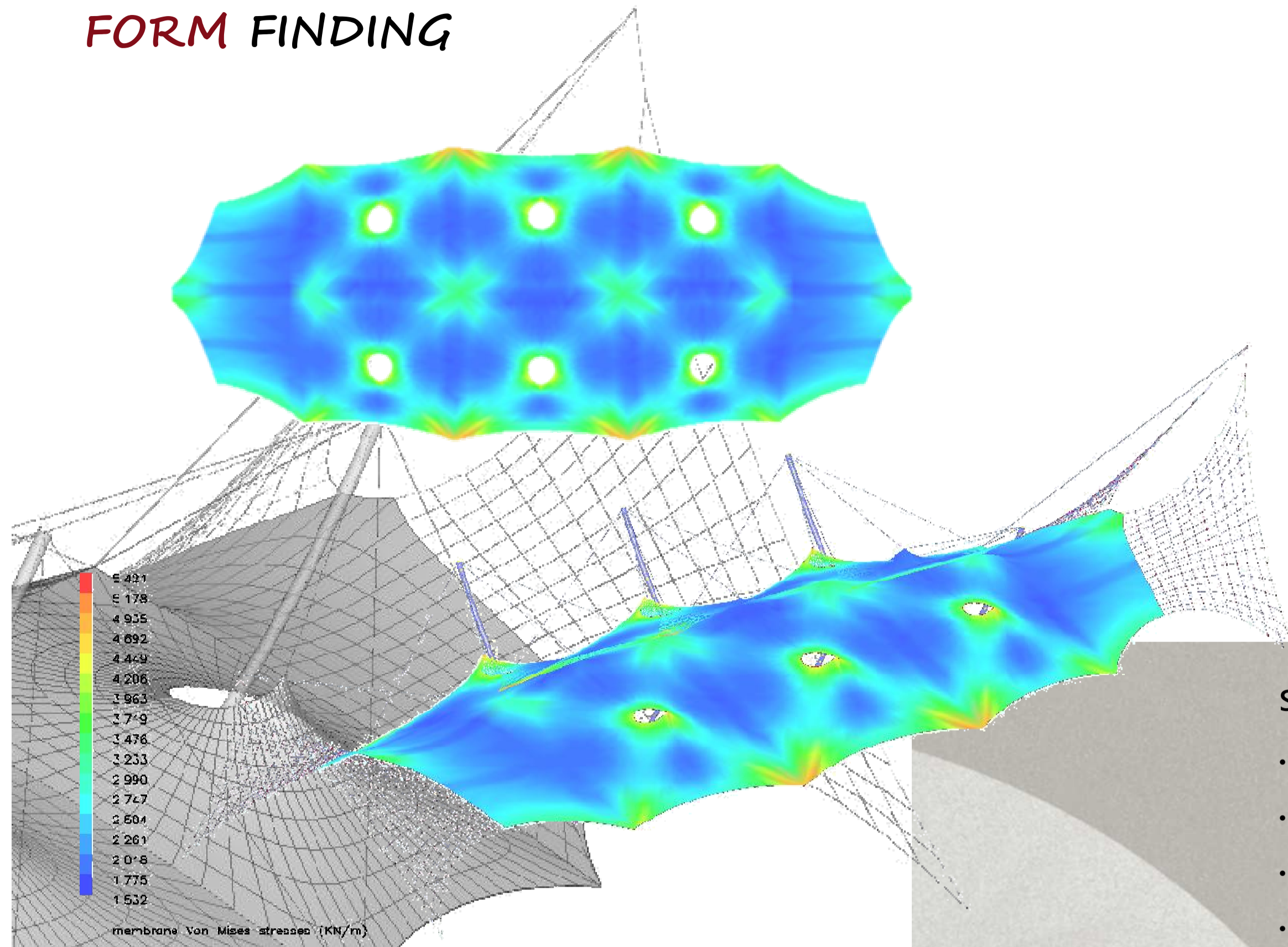


All the lanes are protected from gusted rain coming 45°



**CAUGHT IN A WEB MEMBRANE**  
**MAURO SOGNI**

## FORM FINDING

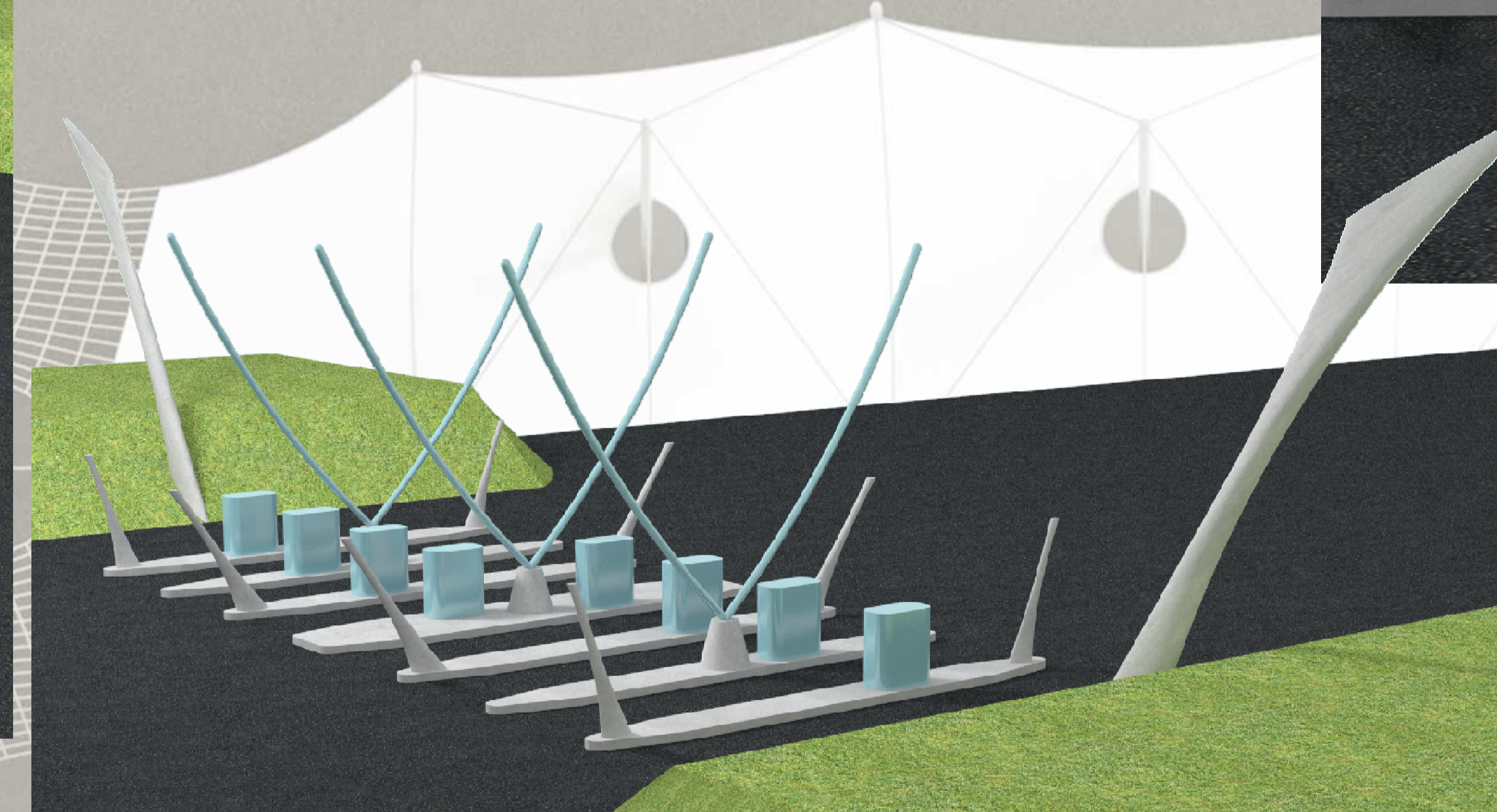
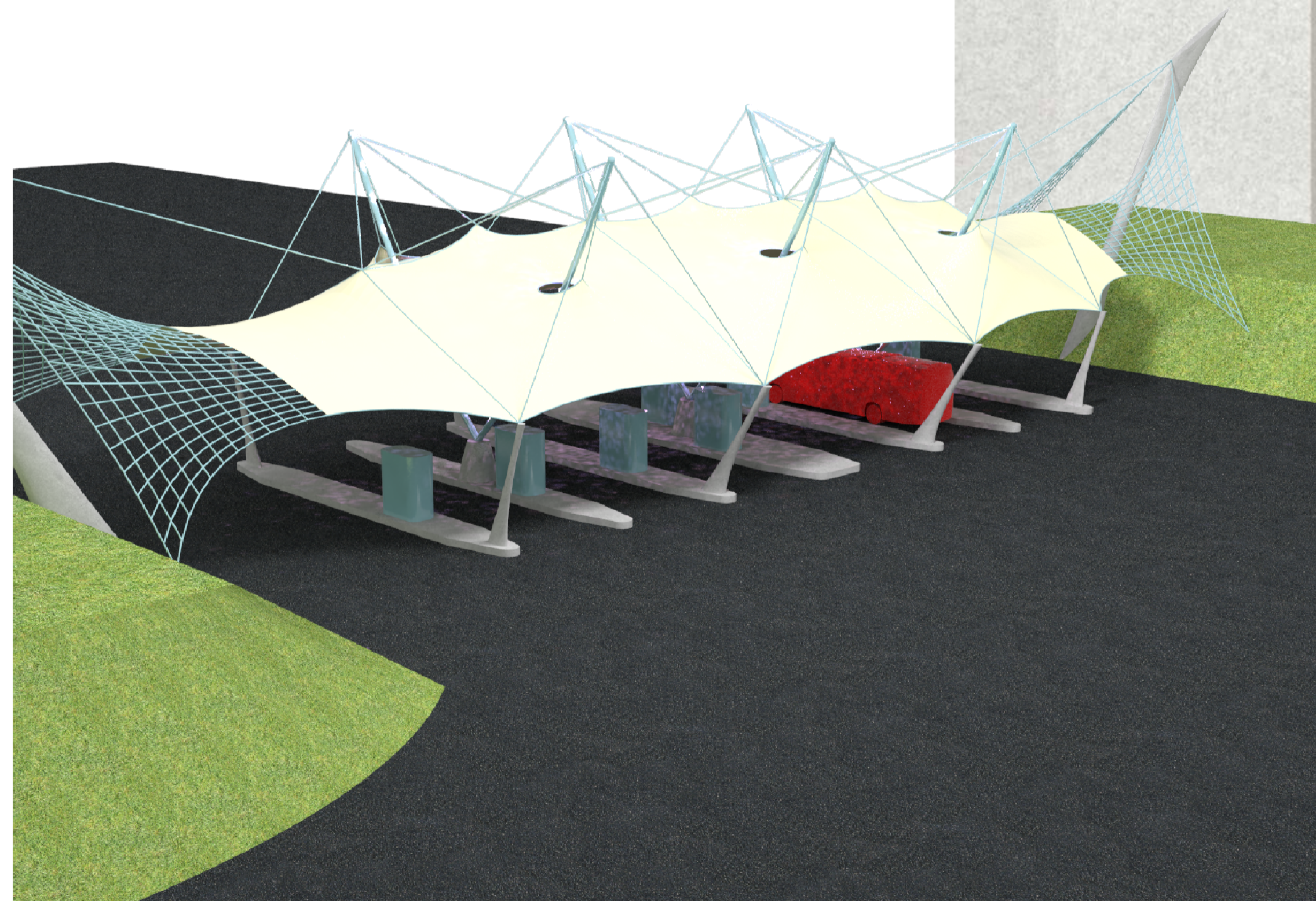
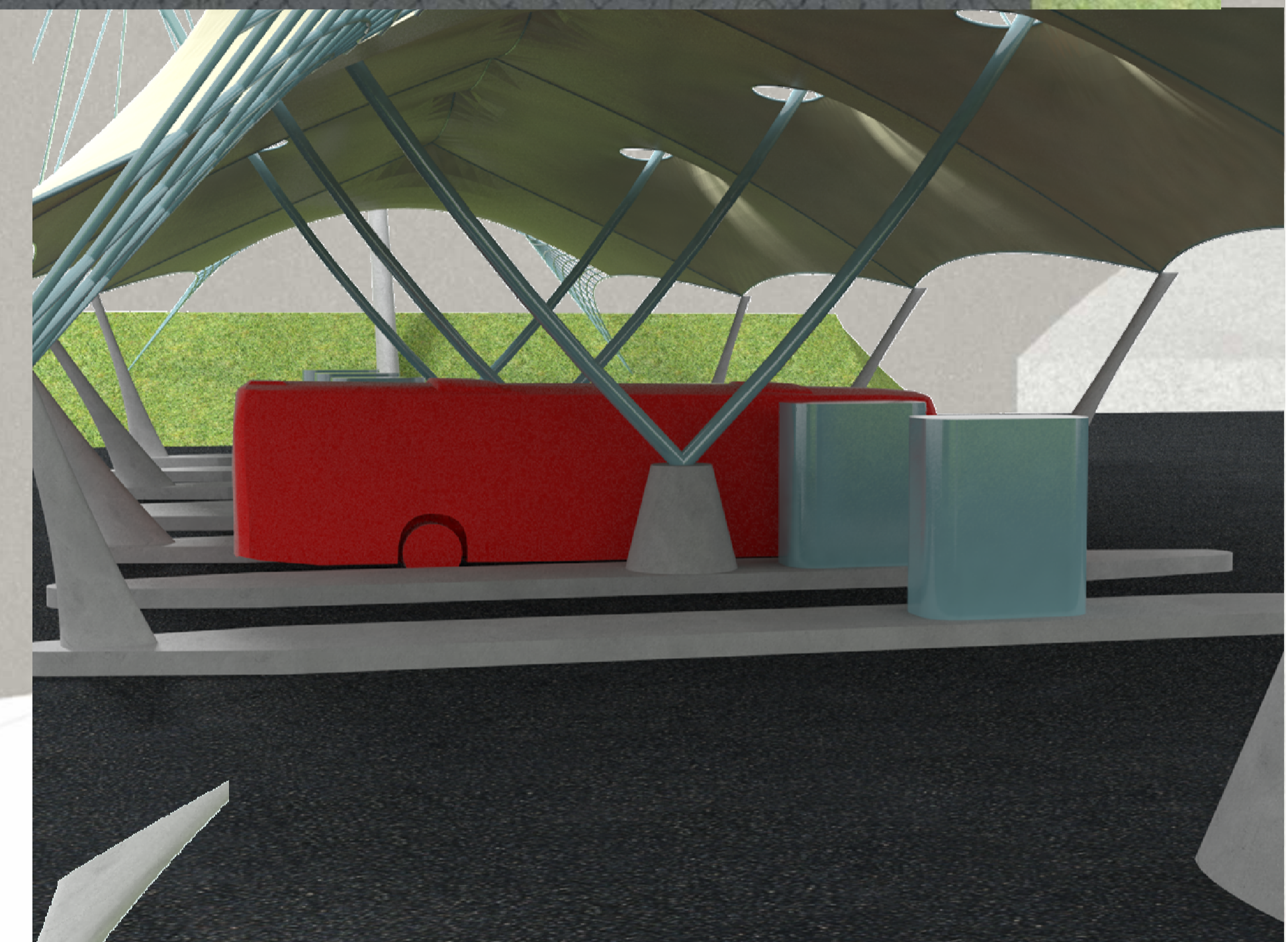


### SUPPORTING ELEMENTS:

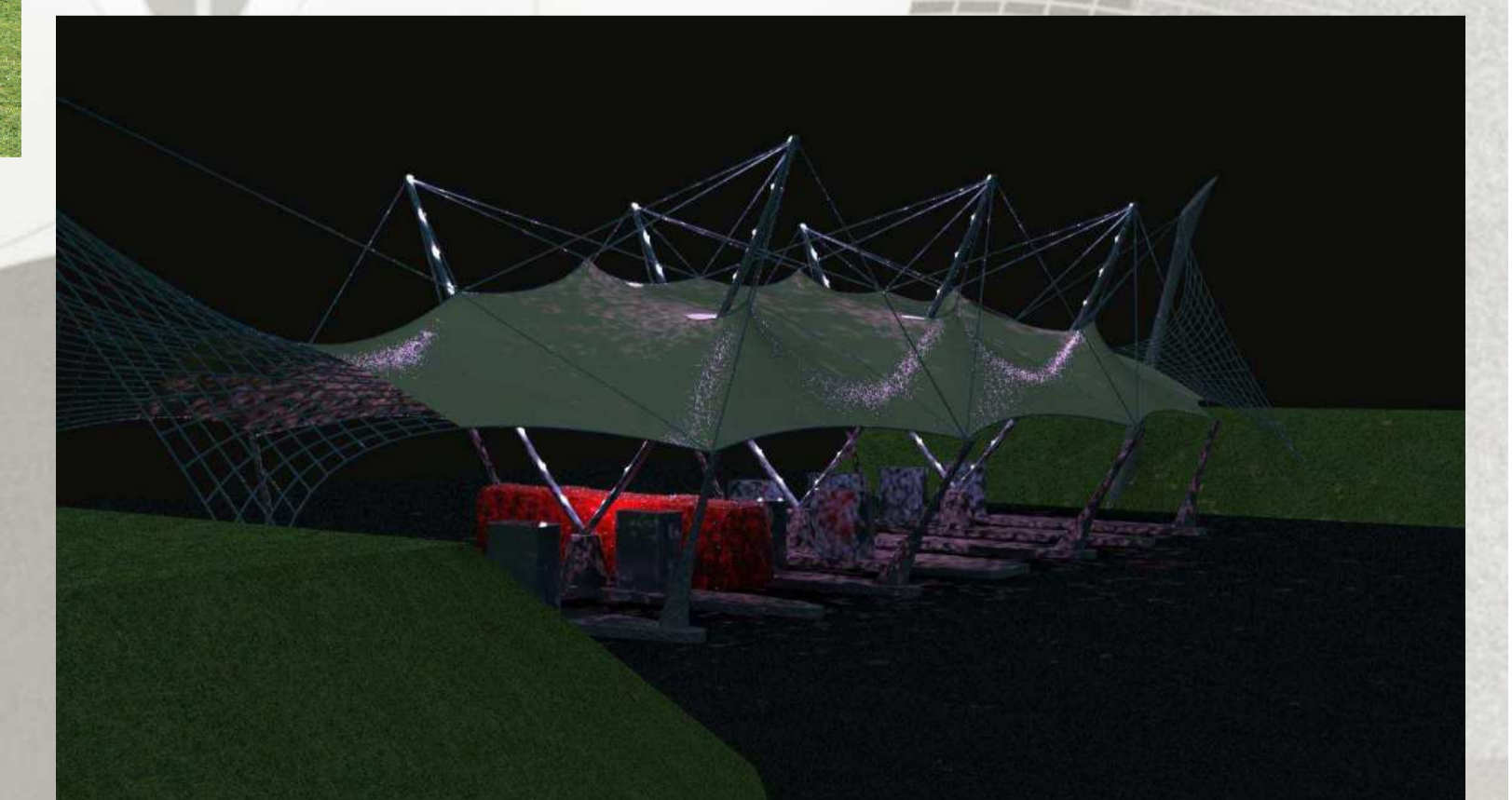
- **TWO** concrete antennas for hanging on the **LEAF** ;
- **EIGHT** concrete columns;
- **THREE** "V" shaped masts;
- The **SPIDERWEB**.

### THREE LEVEL architectural configuration:

- the **HANGING** level
- the **LEAF** level
- the **ANCHORING** level



## LIGHTING DESIGN



## CAUGHT IN A WEB MEMBRANE MAURO SOGNI

### CONCEPT DEVELOPMENT

The basic idea was that of designing something which would seem to **FLOAT** in the air, something like a **LEAF** hanging on by the threads of a **SPIDER-WEB**...

Holes were made to let the warm and polluted air to leave the membrane and to provide a **NATURAL VENTILATION** of the system.