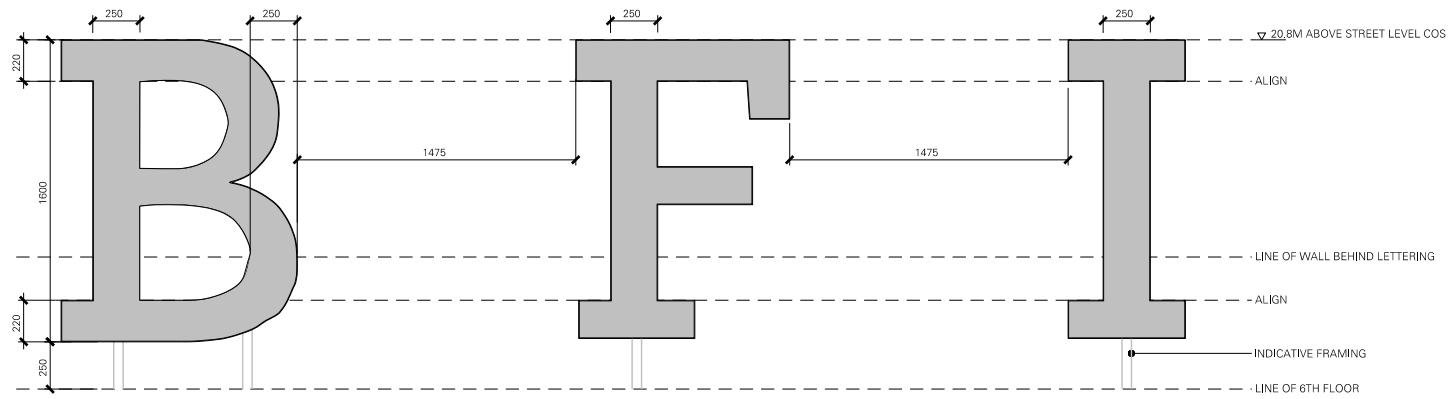
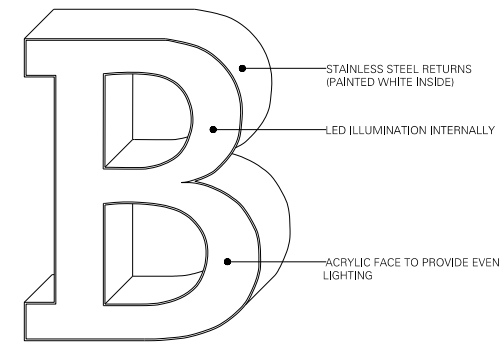


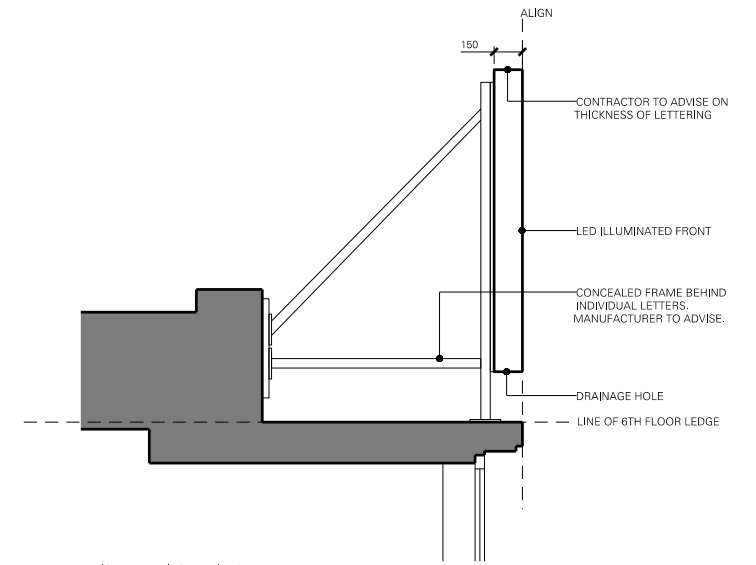
NOTE:
FONT TO BE CONFIRMED WITH CLIENT.



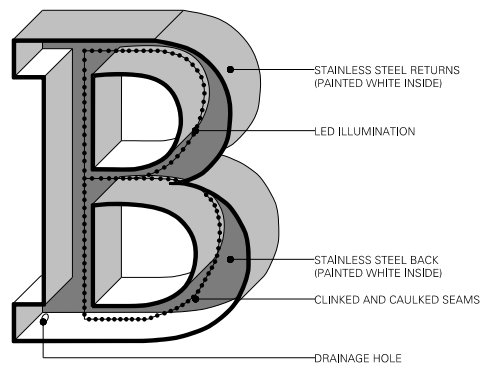
ELEVATION OF HIGH LEVEL 'BFI' SIGNAGE



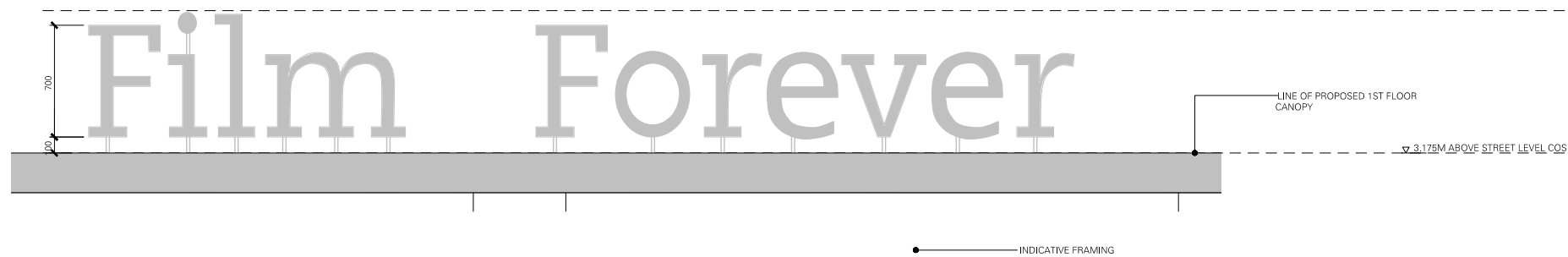
TYPICAL LETTERING DETAIL - AXONOMETRIC ELEVATION



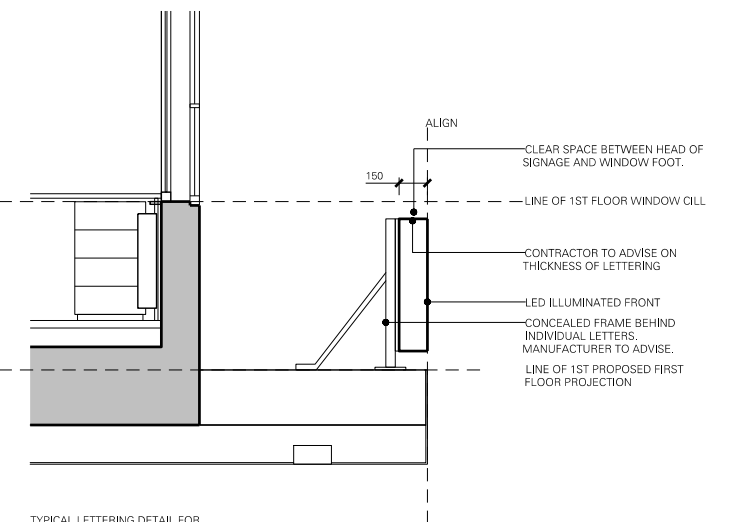
TYPICAL LETTERING DETAIL FOR HIGH LEVEL SIGNAGE - SECTION



TYPICAL LETTERING DETAIL - SECTIONAL AXONOMETRIC



ELEVATION OF LOWER LEVEL 'FILM FOREVER' SIGNAGE



TYPICAL LETTERING DETAIL FOR LOW LEVEL SIGNAGE - SECTION

REV.	DATE	DESCRIPTION	REV.	DATE	DESCRIPTION
-	21-12-2012	PLANNING			

NOTES:
1. ALL DIMENSIONS IN MM
2. THIS DRAWING IS TO BE READ IN CONJUNCTION WITH ALL RELEVANT CONTRACT DRAWINGS
3. THIS DRAWING IS TO BE READ IN CONJUNCTION WITH ALL ENGINEER'S DRAWINGS
4. DO NOT SCALE FROM THIS DRAWING
5. REPORT ANY ERRORS, CONTRADICTIONS AND OMISSIONS TO THE ARCHITECT AS SOON AS POSSIBLE
KEY:



BEN ADAMS ARCHITECTS
Third Floor
99 Southbank Street
London
SE1 1UP
020 7433 0000 F
020 7433 0001 P
www.benadamsarchitects.co.uk
info@benadamsarchitects.co.uk

DRAWING NAME: TYPICAL FACADE SIGNAGE DETAILS
PROJECT NAME: BFI
JOB NO: 12008
SCALE: 1:40 @ A3 1:20 @ A1
STATUS: PLANNING
DRAWING NO: **P800/-**