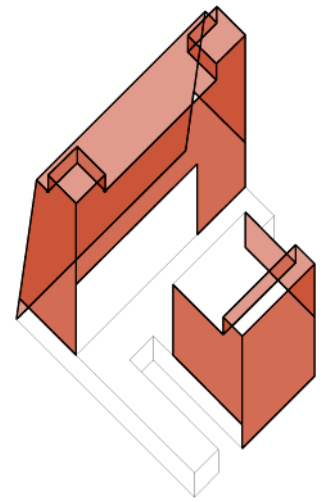
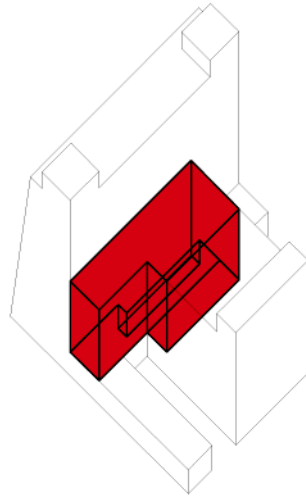
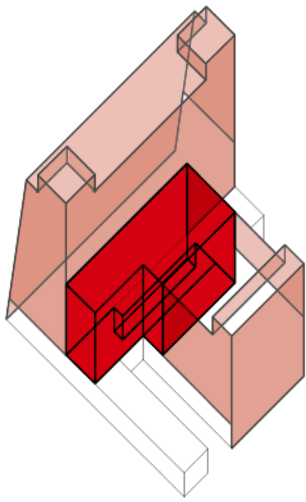
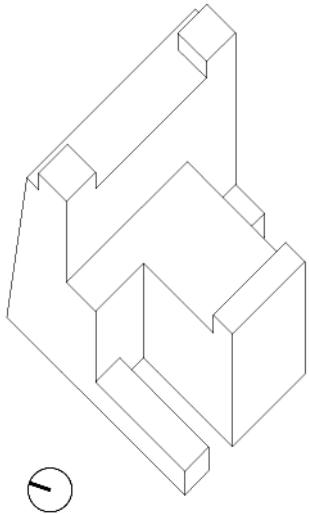
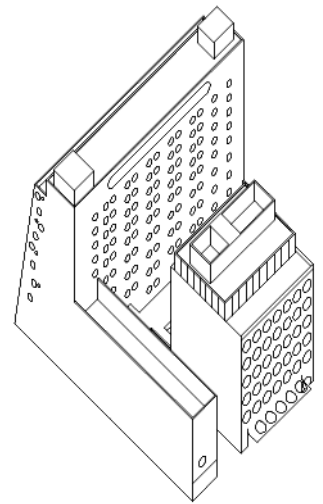
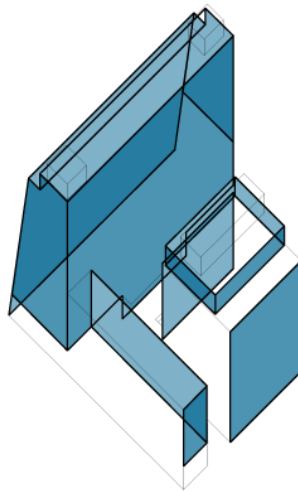
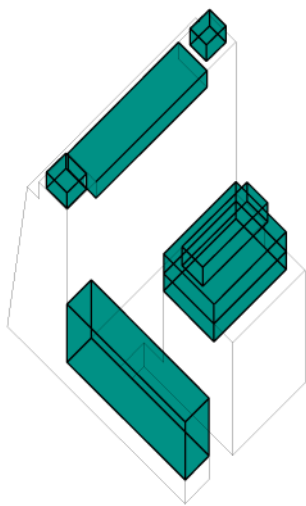


ORIGINAL BUILDING



**SUBTRACTIONS**

The original through block building offered limited possibilities for natural light, so four floors were removed from the center of the building.



## ADDITIONS

Added spaces included areas for a roof lounge, two new floors of guestrooms, pool bar, kitchen, meeting space, a gym, and back-of-house space.

Along the 17th Street exposure, the sloped façade was clad in stainless steel tiles, which were placed in a running bond pattern like the original mosaic tiles of Ledner's Union building. New porthole windows were also added. The 16th Street side of the building, previously a blank façade when the building served as an annex, was layered in perforated stainless steel, its top sheet of holes a replication of the 17th Street punched-window design and the inner sheet a regular perforation pattern. The outer rain screen is punctured with porthole-shaped Juliet balconies for the guestrooms.