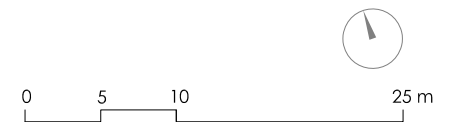
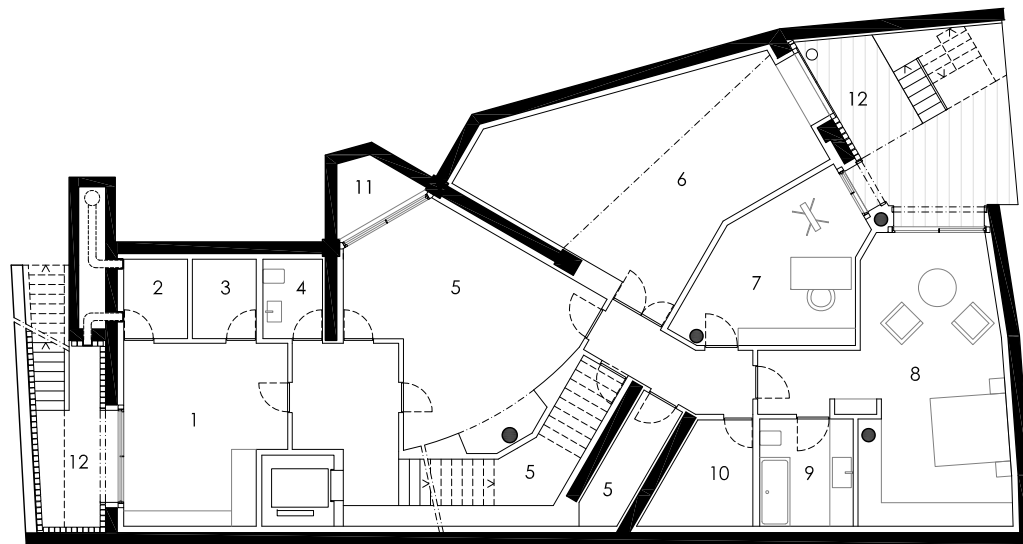


SEAFRONT HOUSE, HERAKLION, GREECE
LOCATION PLAN

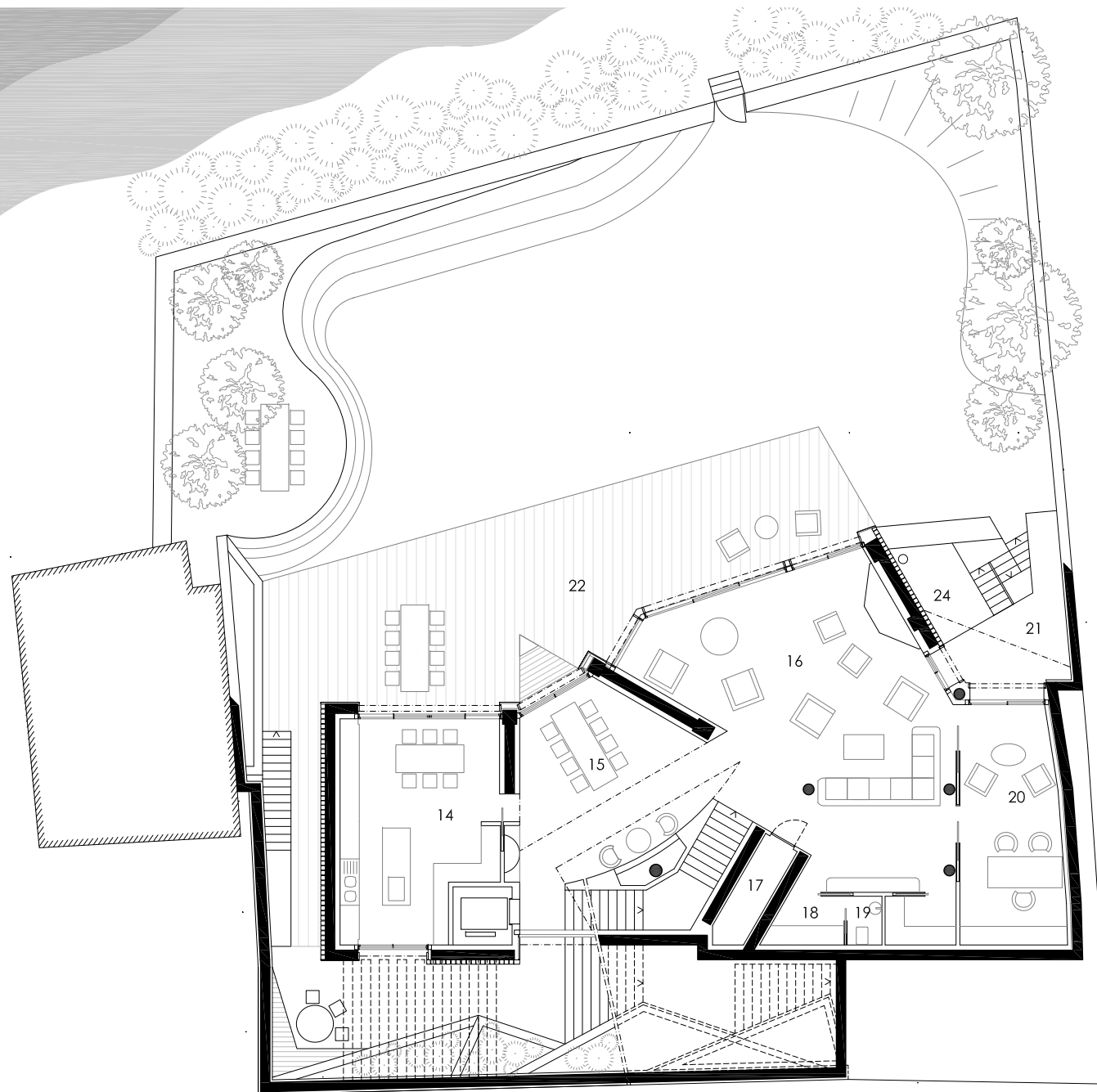


- 1. LAUNDRY
- 2. GENERATOR
- 3. ELEVATOR ROOM
- 4. GUEST BTHROOM
- 5. STORAGE
- 6. MECHANICAL
- 7. STUDY
- 8. STAFF BEDROOM
- 9. BATHROOM
- 10. TANK
- 11. NATURAL VENTILATION
- 12. PATIO



SEAFRONT HOUSE, HERAKLION, GREECE
LEVEL - 6.82

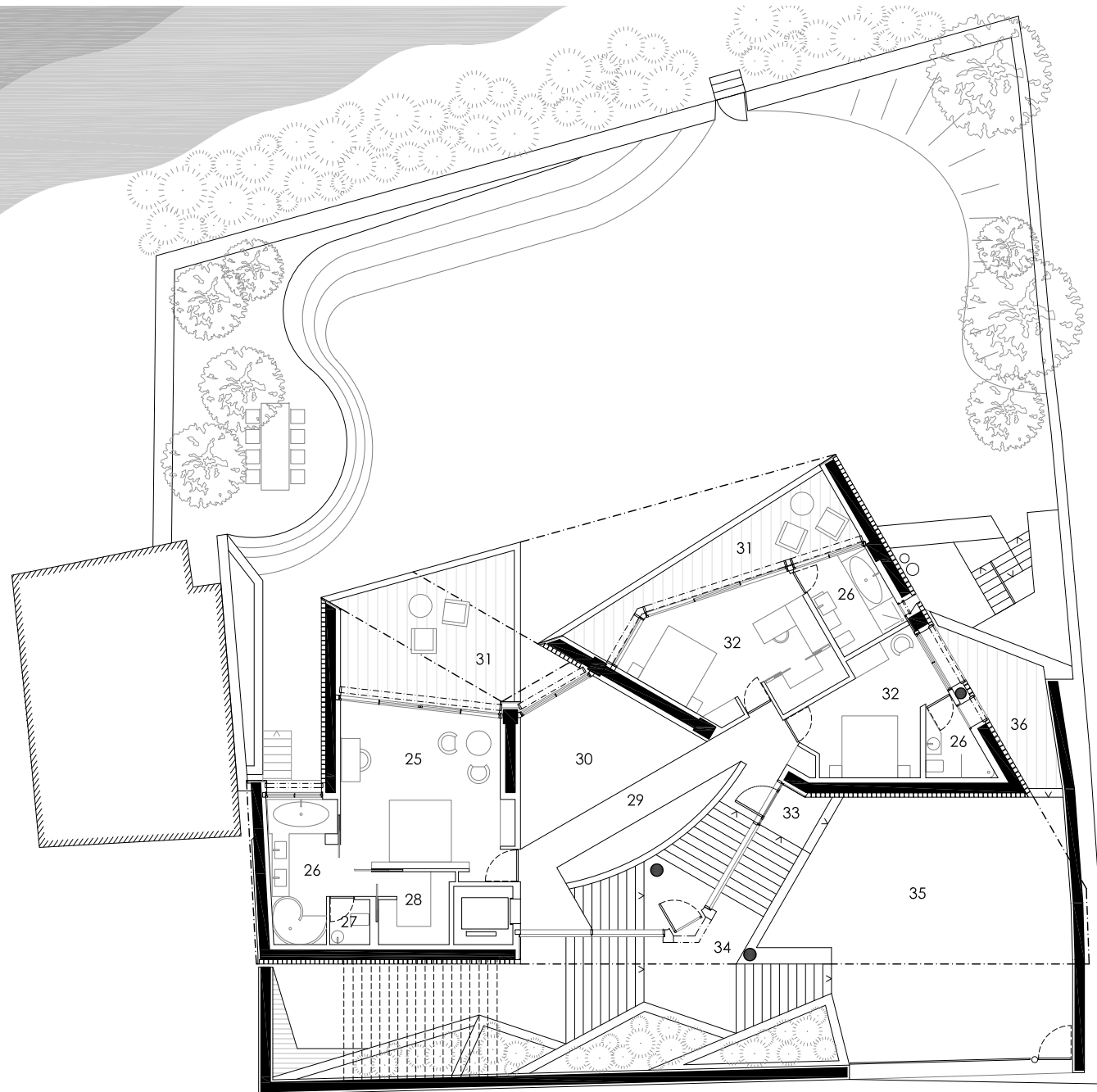




- 14. KITCHEN
- 15. DINING
- 16. LIVING
- 17. STORAGE
- 18. WARDROBE
- 19. TOILETTE
- 20. STUDY
- 21. TERRACE
- 22. COVERED TERRACE
- 23. GARDEN
- 24. VOID

SEAFRONT HOUSE, HERAKLION, GREECE
LEVEL - 4.04

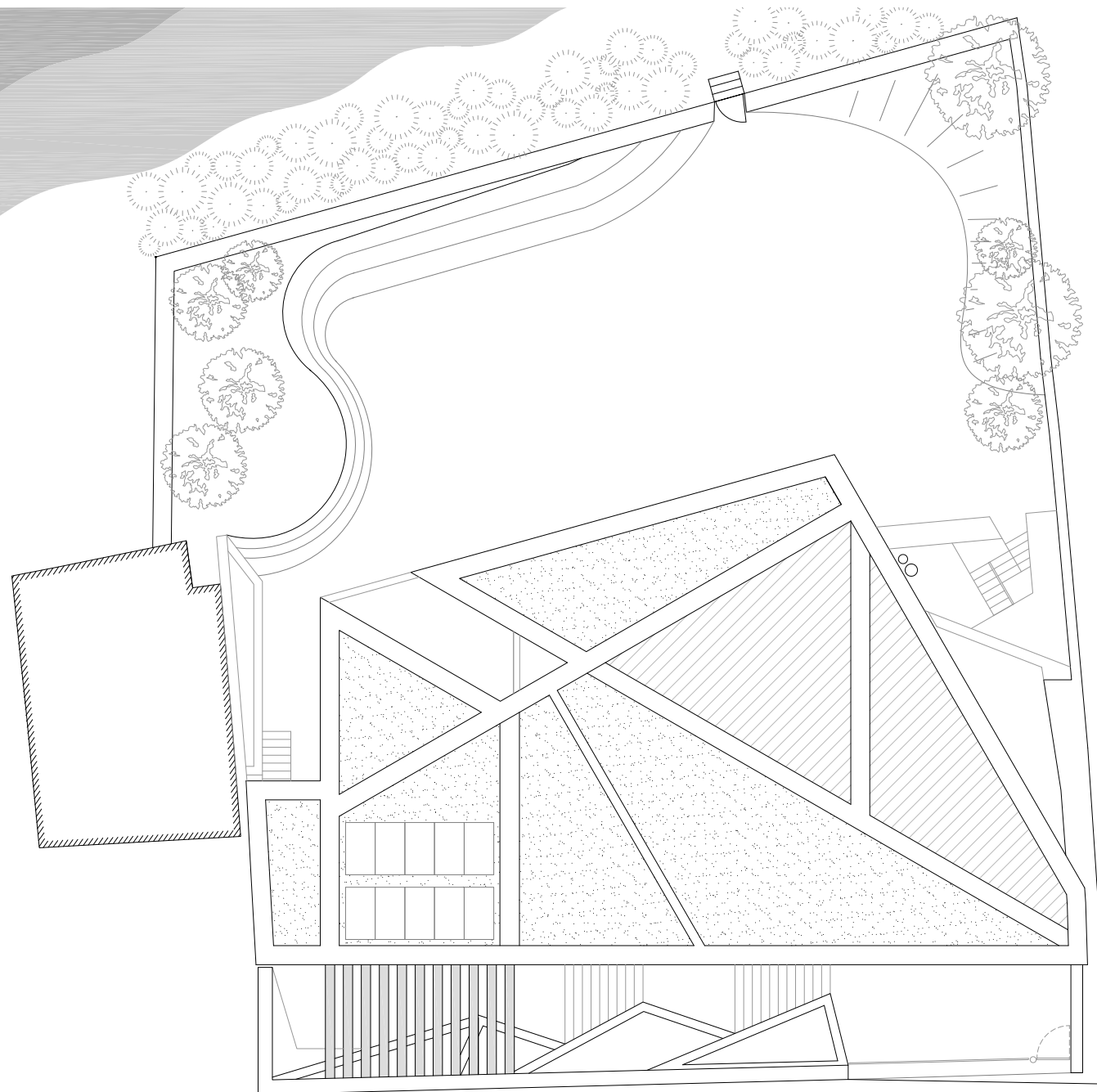




- 25. MASTER BEDROOM
- 26. BATHROOM
- 27. TOILETTE
- 28. WARDROBE
- 29. BRIDGE
- 30. VOID
- 31. TERRACE
- 32. BEDROOM
- 33. ENTRY
- 34. MAIN ENTRY
- 35. PARKING
- 36. TERRACE

SEAFRONT HOUSE, HERAKLION, GREECE
LEVEL - 0.61





SEAFRONT HOUSE, HERAKLION, GREECE
ROOF PLAN

