

MIMA LIGHT



# MINIMAL SIMPLICITY

## MIMA LIGHT

### PROJECT DATA

Client

*Generic*

Location

*Generic*

Date of Completion

*January 2015*

Budget

*40'000 eur*

Team

*Mário Sousa*

*Marta Brandão*

*Rui Lima*

*Frederico Leite*

Builder

*Portilame*

Photo Credits

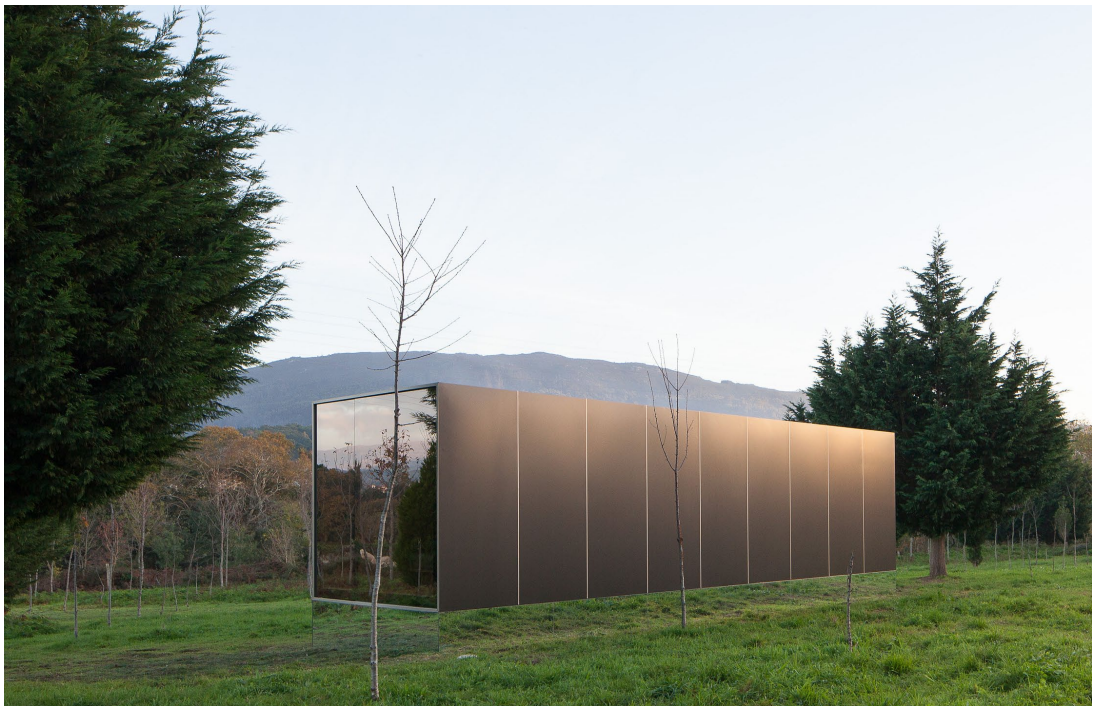
*Jose Campos Photography*

Inspired by the minimalist sculpture of artists such as Donald Judd, John McCracken and Robert Morris, the new MIMA Light aims to be epitome of sophistication, synthesizing a surprising combination of sculptural depuration and interior comfort.

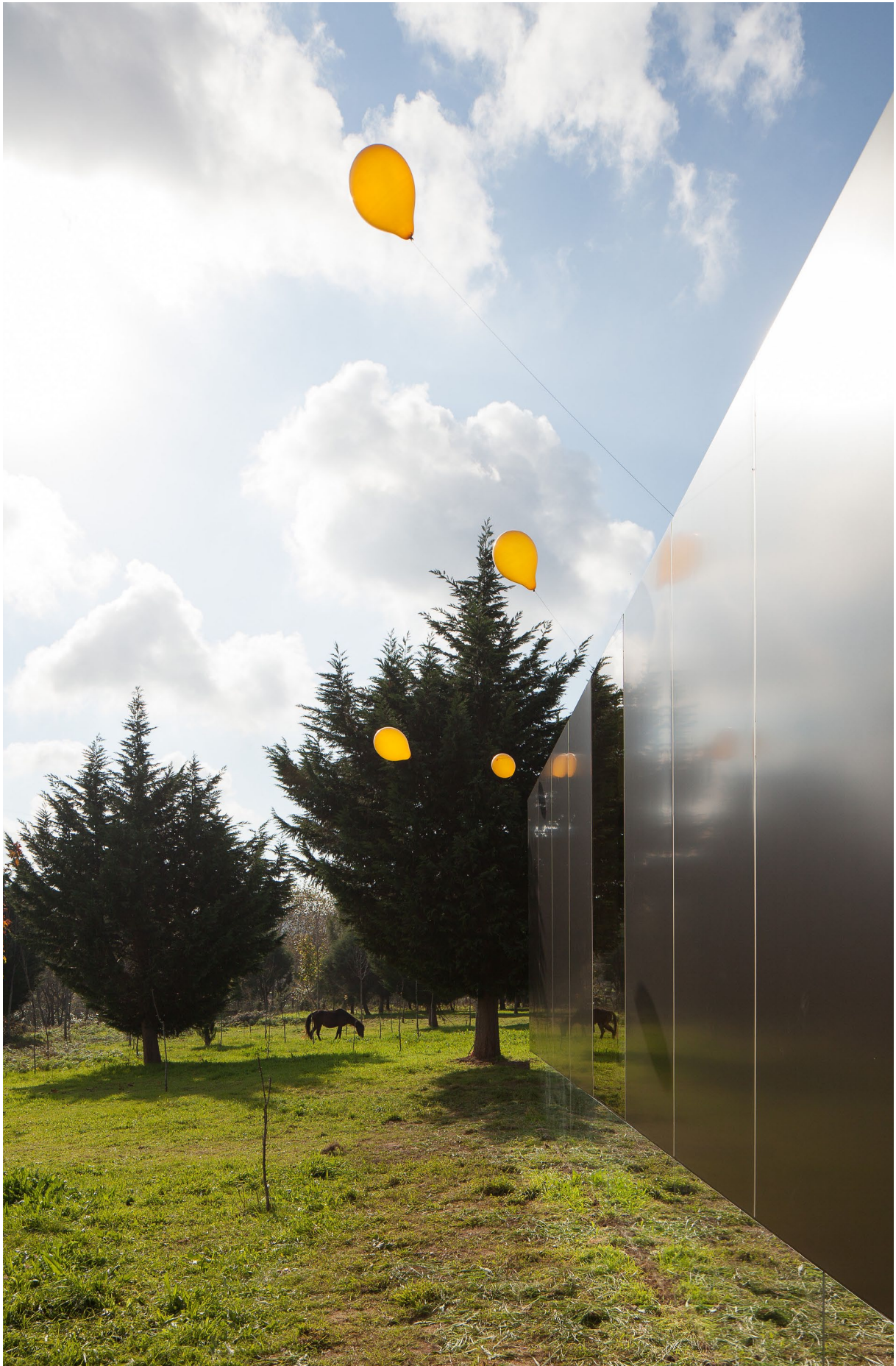
Outside, a sober and sharp object can be appreciated from any angle - so light that it seems to levitate. Inside, the comfort of a uniform coating in pine - combined with the elegance and minimalism of the details, the chromatic choice and the quality of components and materials - generate a cosy home.



References  
*Donald Judd & Robert Morris*



*exterior views*



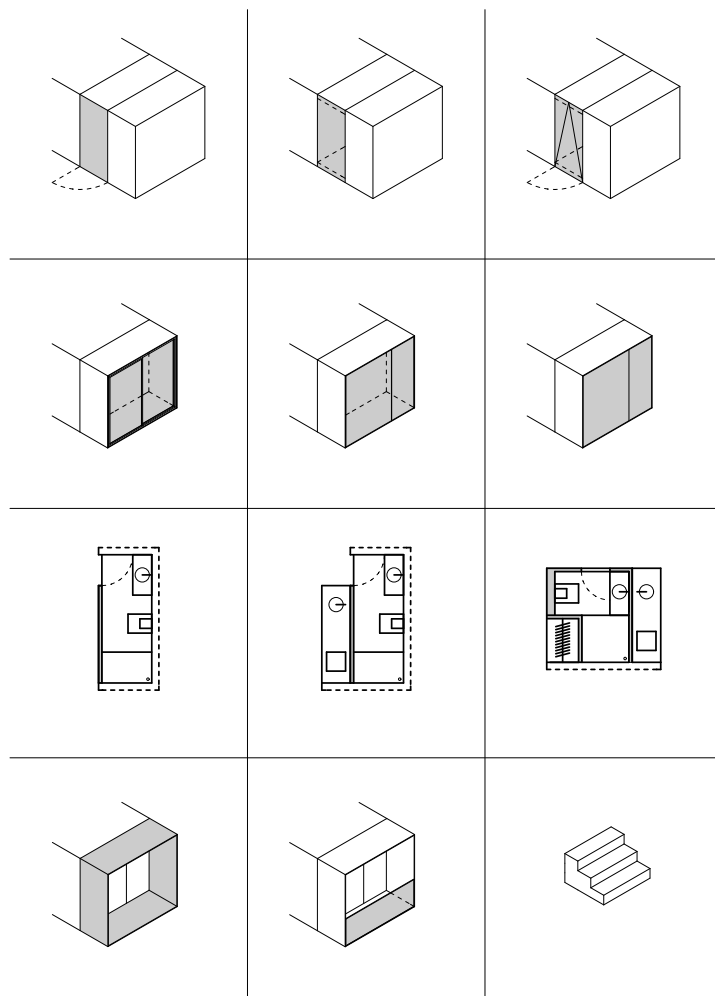
©Jose Campos Photography



©Jose Campos Photography



The MIMA Light offers a range of different options, both in terms of area, typology and finishes. It can also hold various uses such as housing, tourism, commerce or office space. The lightness of the form extends to the cost, the process and the speed of delivery.



MIMA Light is composed by several individual elements that can be added to the project, allowing the client to customize his/her own house, respecting the form and the base concept behind the object.





©Jose Campos Photography



©Jose Campos Photography