

Art Proposal for:

**The College of
Physicians
& Surgeons, BC**

Submitted by:

**Marion Webber
Artist, Educator, Consultant**

September, 2011



mwebberart.com

**A Feast for the Eyes,
Food for the Soul.**

**A Feast for the Eyes,
Food for the Soul**

Introduction

The purpose of this proposal is to offer suggestions for art to be placed within the new offices of The College of Physicians and Surgeons of BC. Five meeting rooms, including a board room require artwork.

The general decor is cotemporary with muted colors and tones. As there is no current opportunity to view the premises, there are several opportunities for choosing art. One option is to choose art that is subordinate or blends into the furnishings, wall and floor colors. Another option, is to consider bold or vibrant paintings that provide a focal point to the environment and a pleasing contrast to room decor. Ultimately, the choice made by the committee would suit their long term goals, aesthetic interests and overall feeling desired within the facility.

Often, one's own gut instinct (emotional first impressions) guides the most secure choices in art.

Art Selection Options:

The artist is providing a selection of groups of paintings. Often the colors and paint treatment are similar. There are many more choices available on her website. Images on the web site and in electronic documents do not represent the best quality. However, if requested higher resolution jpgs will be submitted. The artist welcomes studio visits by the committee to see the real quality of the originals.



Painting on
Deas Island,
Delta, BC.

About The Artist

Marion Webber is a practising visual artist based in Vancouver, BC. Her paintings are primarily nature themes, landscapes. She has a sound background and training in the visual arts including a BFA and Diploma in Advertising and Graphics.

With over 30 years in the creative industries, her technical acumen, and conceptual vision are evident in her reverence for craftsmanship in each painting.

She works primarily in oils on canvas and mixed media on paper comprising oil pastel and graphite.

Her design skills have assisted clients in choosing and placing art to work well with their decor and to provide overall design balance.

Artist Statement:

“Nature is Nurturing. This is what I bring to my art. I offer a place of rest and repose. My images are based on my trips around the west coast of British Columbia.”

Recently, one of Marion's paintings was selected by the art committee of the Jim Pattison Outpatient Centre in Surrey, BC. The painting, entitled “Sunlit Grotto” was chosen as it works well with the decor and offers serene appeal to staff and patrons.

Contact Information:

Marion Webber
1171 West 8th Ave.
Vancouver, BC
Canada V6H 1C5

Tel: 604-739-6950
Email: mwebber@uniserve.com

Website: mwebberart.com

**A Feast for the Eyes,
Food for the Soul**



Winter Flow #1

Location: Stanley Park
Size: 48" w x 60" h
\$3,995



Winter Flow #2

Location: Stanley Park
Size: 48" w x 60" h
\$3,995

Scenario 1: Fall Ponds

These pieces were painted in tandem emphasizing fall tones and colors. They have the same palette with #1 having a preference for the orange/brown and green tones, and #2 focused on the green/blue tones with orange accents. These are large, 4' wide by 5' high. They can be positioned together, on opposite walls or separately.

**A Feast for the Eyes,
Food for the Soul**

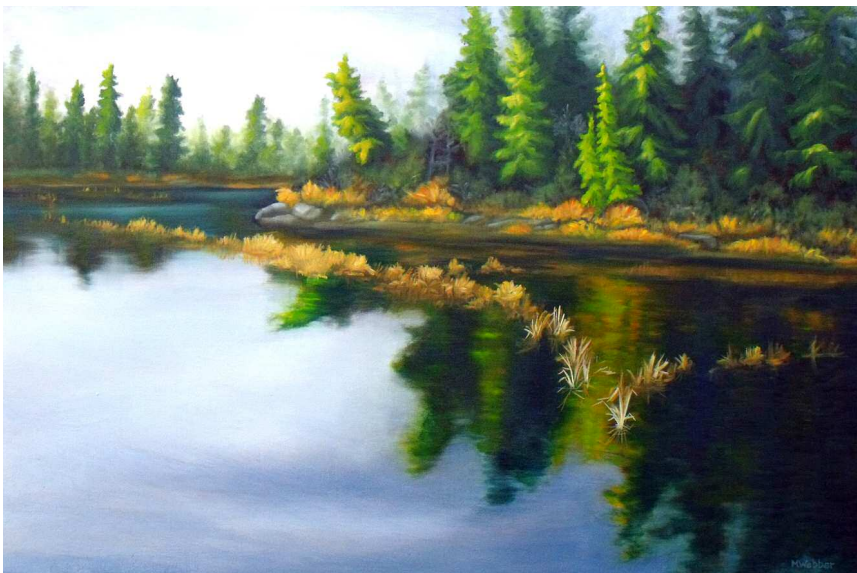


Scenario 2: Winter Light

Painted together in the same palette, these pieces make good use of cool colours: greens, blues, browns. They are the same height and paint treatment.

Winter Light #1

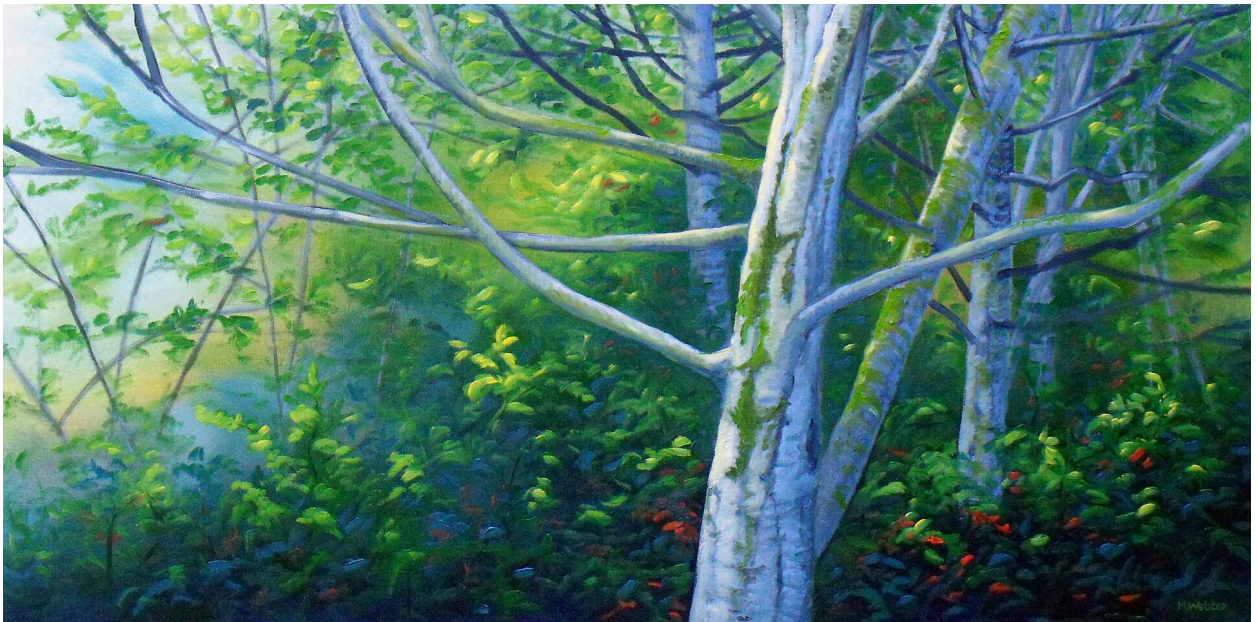
Location: Stanley Park
Size: 20" w x 24" h
\$895



Winter Light #2

Location: Stanley Park
Size: 36" w x 24" h
\$1,495

**A Feast for the Eyes,
Food for the Soul**



Scenario 3: Winter Light

Painted together in the same palette, these pieces are cool toned with blue, teal, turquoise, green and accented with warm reds. They would look fantastic side by side or opposite each other.

Blue Wood #1, top

Location: False Creek
Size: 36" w x 18" h
\$1,295

Blue Wood #2, bottom

Location: Jericho Park
Size: 36" w x 18" h
\$1,295

**A Feast for the Eyes,
Food for the Soul**



Scenario 4: Early Fall, Gates Lake

All the paintings on this page are the same size and could be grouped as a set of 3 and 2 respectively. They could also be mix and matched across a long wall. Both series indicate a contrast between cool background colors and warm foreground colours.

Left to right, 1, 2, 3

Location: Gates Lake, Pemberton area
Size: 18" w x 24" h
\$795 each



Welcome Path, left

Location: Squamish Park Estuary
Size: 18" w x 24" h
\$795

Winter Path, right

Location: Jericho Park
Size: 18" w x 24" h
\$795

Scenario 5: Pathways

One of my favourite themes, pathways offers strong design elements and a sense of mystery leading the viewer into the painting.

**A Feast for the Eyes,
Food for the Soul**



Still Water, left

Location: Deas Island Park
Size: 30" w x 36" h
\$1,595

Turning Season 1, 2

Location: Semiahmoo Reserve
Size: 36" w x 18" h each
\$1,195 each



Scenario 6: Estuary

The paintings on this page are from a series of visits around the Fraser River Delta area. The colours are very warm from gold to copper reds and sage greens. Part of the warmth is due to the rust coloured underpainting. Underpainting is a typical technique from the Renaissance era in Europe.

Mist Down The Estuary

Location: Semiahmoo Reserve
Size: 40" w x 30" h
\$1,995

**A Feast for the Eyes,
Food for the Soul**



The Queen's Entrance, above

Location: Deas Island Park, Delta. This painting was a favourite of renowned artist Gordon Smith. He painted two years of works influenced by the rich greens and complex tones in this painting.
Size: 48" w x 24" h
\$2,495

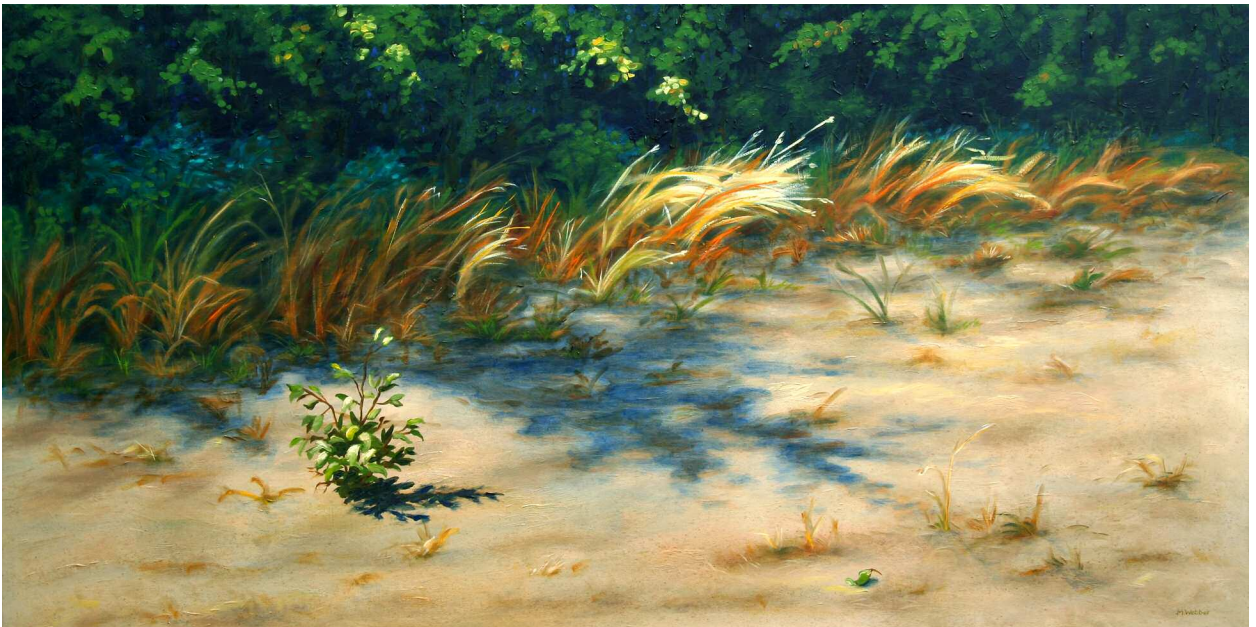
Little Wings #1, left

Location: Saltspring Island
Size: 24" w x 36" h
\$1,295

Scenario 7: The Intimate Landscape

There are many kinds of landscapes. I enjoy broad image vistas, but also overlooked intimate spaces. Often as shaft of light will illuminate the center of attention and provide rich shadows as well. I like to take notice of the unnoticeable.

**A Feast for the Eyes,
Food for the Soul**



Scenario 8: The Intimate Landscape, Grasses

Both these paintings are based on many trips to Deas Island, Delta. It is a simple park,— a sand bar,— but offers beautiful intimate landscapes, which I love. These can be placed beside each other or on separate walls.

Symphonic Dances, top

Location: Deas Island Park
Size: 48" w x 24" h
\$1,995

Audition, bottom

Location: Deas Island Park
Size: 48" w x 24" h
\$1,995

**A Feast for the Eyes,
Food for the Soul**



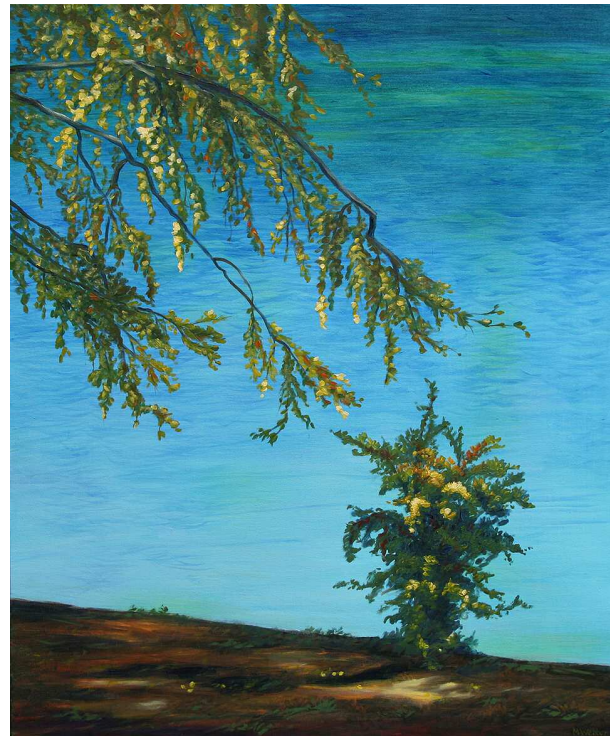
Cloud Reflections, left

Location: Richmond
Size: 48" w x 36" h
\$2,495

Purple Grasses, right

Location: Deas Island Park
Size: 24" w x 36" h
\$1,495

(My apologies for the shadow at the top; its the easel!)



Scenario 9: Pond Stories

Ponds offer a rich plethora of contrasting texture and color. These intensely colored images work well independently or grouped.

Elegant Orange, left

Location: Jericho Park
Size: 36" w x 48" h
\$2,495

Conversation #2, above

Location: Thetis Lake Park,
Vancouver Island
Size: 30" w x 36" h
\$1,595

Marion Webber
Artist, Educator, Consultant

mwebberart.com

**A Feast for the Eyes,
Food for the Soul**



A Final Note....

“Thank you very much for the opportunity to present this proposal. I look forward to meeting you and helping you make choices that will make you very happy...for sure. There are also many more paintings on my website too. You are most welcome to visit my studio. It's close to downtown near Granville Island. I can also provide guidance on framing your choices.”

Sincerely,

Marion A. Webber