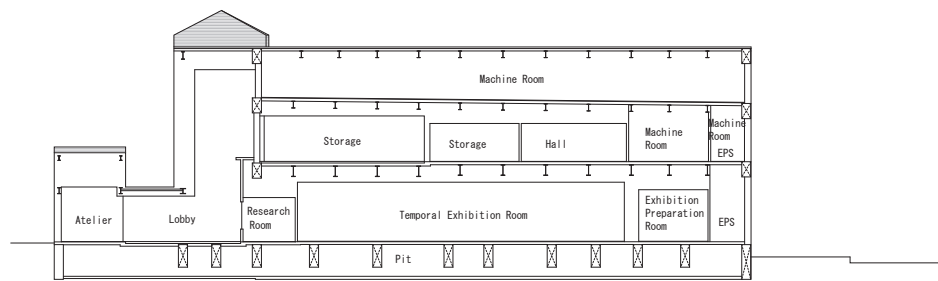
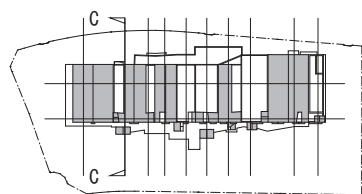
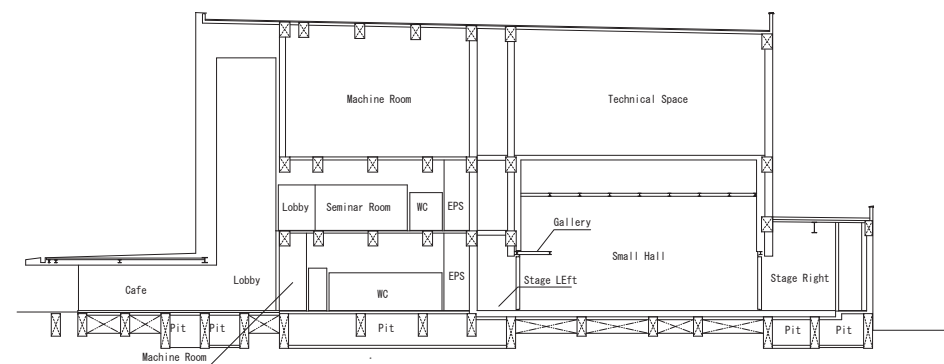


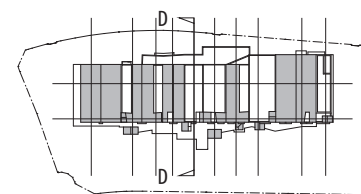
▼GL=15375
▲GL=15130
▼3FL=GL+10750
▼GL=9645
▼2FL=GL+5400
▼1FL=GL+100
▲GL
▲GL=-2400



▼GL=19800
▼GL=19100
▼3FL=GL+10750
▼2FL=GL+5400
▼1FL=GL+100
▲GL
▲GL=-1400
▲GL=-1600
▲GL=-2400

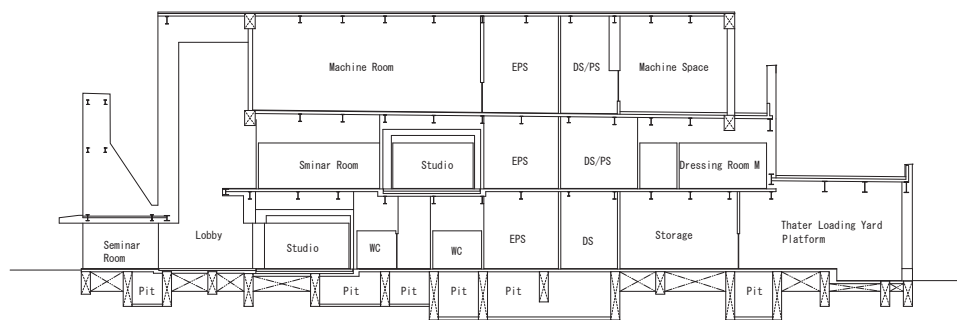


Section C-C

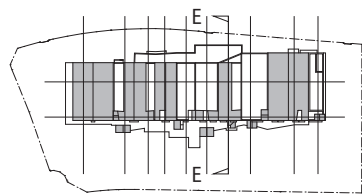
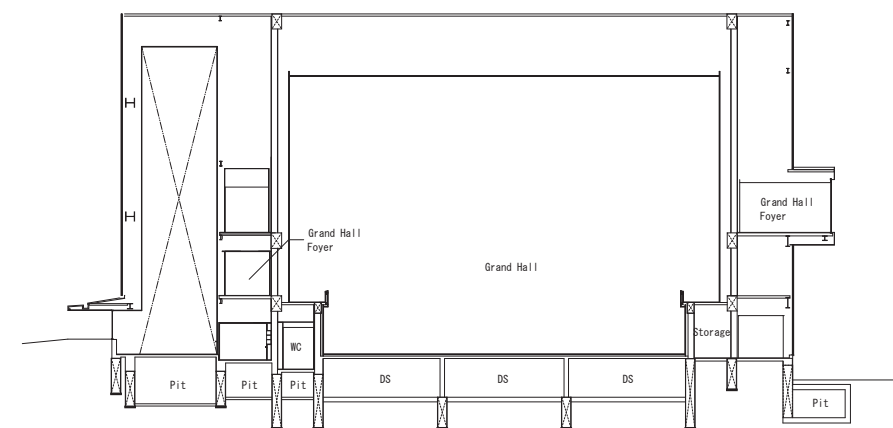


Section D-D

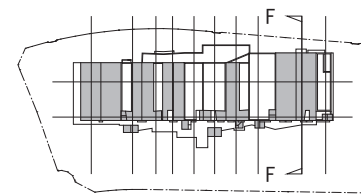
▼GL=17058
▼3FL=GL+10750
▲GL=10550
▼2FL=GL+5400
▼1FL=GL+100
▲GL
▲GL=-1400
▲GL=-1600
▲GL=-2400



▼GL=30700
▼Technical Space 1
GL=26650
▼Technical Space 2
GL=23530
▼Machine Gallery
GL=19930
▼4FL=GL+14040
▼3FL(2)=GL+8250
▼2FL(2)=GL+2650
▼1FL=GL+100
▲GL
▲GL=-1200
▼GL+2650



Section E-E



Section F-F