

Project\_ “Cineteca Nacional del Siglo XXI”

**Architectural Project\_**

**rojkind arquitectos** Michel Rojkind [Founding Partner],  
Gerardo Salinas [Partner]

**Program\_** Screening Rooms, National Film Archives, Digital  
Restoration Laboratory, Gallery, Offices, Retail, Parking Structure,  
Outdoor Amphitheater, Plaza / Park

**Construction Area\_** 20,188 m<sup>2</sup>

**Status\_** Established

**Design Date\_** 2011

**Completion Date\_** 2012

**Location\_** México D.F., México

**Client\_** CONACULTA - CINETECA NACIONAL

**Credits**

**Architectural Project\_**

**rojkind arquitectos**  
Michel Rojkind [Founding partner], Gerardo Salinas [Partner]

**Team\_**

Alonso de la Fuente Obregón, Rafael Cedillo Sánchez, Phillip  
Schlauch, Birgit Hammer, Djurdja Milutinovic, Alfredo Hernández  
Soto, Rodrigo Medina, Juan Manuel Ortuño, David Stalin Vergara,  
Dolores Robles - Martínez Gómez, Isaac Smeke, Andrea León

**Landscape\_**

Ambiente Arquitectos  
Fritz Sigg Calderón, Juan Manuel Guerra Villasana

**Cinema Consultants\_**

Auerbach Pollock Friedlander  
Tom Neville, Vene García, Kenneth Fause

**Content Editor\_**

Alejandro Hernández Gálvez

**Roof Structure\_**

Studio NYL  
Chris O'hara, Julian Lineham

**Structure\_**

CTC INGENIEROS  
Carlos Tapia

**Interiors\_**

Esrawe Diseño  
Héctor Esrawe

Alberto Villarreal

**Renders\_**

Axel Fridman  
rojkind arquitectos

**Video\_**

Glessner Group  
Germán Glessner

**Graphic Design\_**

Ernesto Moncada

**Media\_**

Monique Rojkind

**Model\_**

Roberto Gil

## Project Description\_

The National Council for Culture and the Arts has announced that the “Cineteca Nacional del Siglo XXI” project has been awarded to Rojkind Arquitectos.

“To intervene and expand the National Film Archive involves understanding a substantial change in film, as suggested in the term “moving pictures”. Today, images move not only on a screen, the screens move with us: they go where we go, and the movies, have gone from being a gathering space for the masses, to also reaching us wherever we might be.

The new National Film Archive and Film Institute must understand this condition, both to ensure and protect the wealth of our country’s moving pictures as well as those of the rest of the world and to make them accessible, in all their various forms, to the general public. A place which will have movies, but which will also offer other recreational spaces, taking advantage of the latest technologies. Common spaces and spaces to promote communication. The idea is in part to remove film from its classic exhibition site: movies in the park, in the café, in the square, to transform those spaces to become more than just services related to the experience of the movies, but rather to become part of the experience itself: the park itself as a movie, or the café, or the square.

In this way, the National Film Archive becomes a space of physical and virtual connections between media and people. An interface with two key elements: the continuous ground that connects the different elements that make up the National Film Archive and the roof, that connects them in its own way.- Alejandro Hernández

The project includes the total renovation of the complex, originally built as the “Composer’s Square” in 1984 by Manuel Rocha and transformed on several occasions since becoming the Nation’s Film Archive and Film Institute in 1974.

In addition to the existing screening rooms, the complex currently has five archive vaults, four of them housing a collection of more than 15,000 film classics of world cinema in 35 and 15 mm formats. The fifth vault houses iconographic material, including posters, photographs, slides, negatives and video. The surface of vaults will increase from 1500 to over 2200 square meters, in order to house 50 000 more reels of film. The space for the gallery and the digital restoration lab will have a surface area of 500 square meters and the offices once reorganized, will be reduced from 1900 to 1800 meters.

The new project will add four new screening rooms, for a total of 1000 extra seats, in addition to renewing the existing screening rooms whose total capacity will be increased from 2050 to 3050 seats. A six-level above grade parking will be built with a capacity for 528 cars, compared to the current 422. This will free up 70% of the area now occupied by parking. That space, besides allowing for the construction of the new screening rooms, will allow for an outdoor amphitheatre with a capacity for 700 spectators, a public park and a central public plaza.

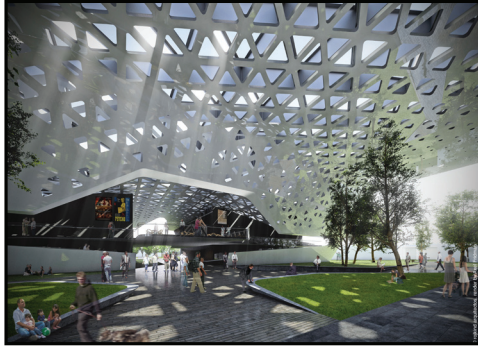
In total, the National Film Archives will increase its built area from 20,000 to almost 29,000 square meters, of which 7,000 are destined to public spaces. The purpose is to generate a new comprehensive cinematic experience and more options in terms of programming.

Image Credits\_



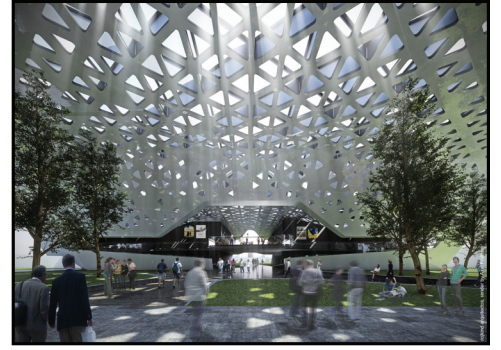
CNT\_01\_rojkind architectos.jpg  
**Image Caption:** Exterior View  
**Render:** © rojkind architectos, render by Axel Fridman

\*courtesy of rojkind architectos



CNT\_02\_rojkind architectos.jpg  
**Image Caption:** Interior View  
**Render:** © rojkind architectos, render by Axel Fridman

\*courtesy of rojkind architectos



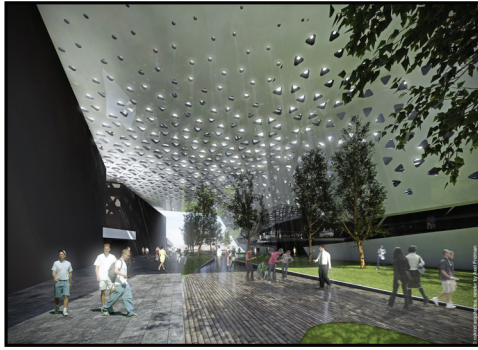
CNT\_03\_rojkind architectos.jpg  
**Image Caption:** Interior View  
**Render:** © rojkind architectos, render by Axel Fridman

\*courtesy of rojkind architectos



CNT\_04\_rojkind architectos.jpg  
**Image Caption:** Interior View  
**Render:** © rojkind architectos, render by Axel Fridman

\*courtesy of rojkind architectos



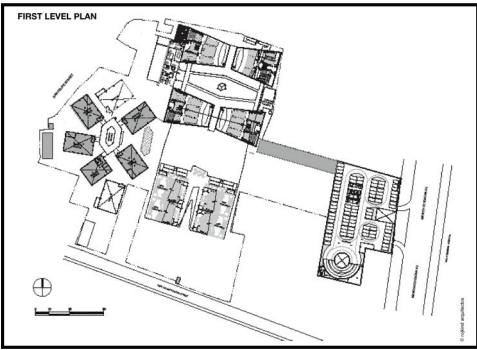
CNT\_05\_rojkind architectos.jpg  
**Image Caption:** Interior View  
**Render:** © rojkind architectos, render by Axel Fridman

\*courtesy of rojkind architectos



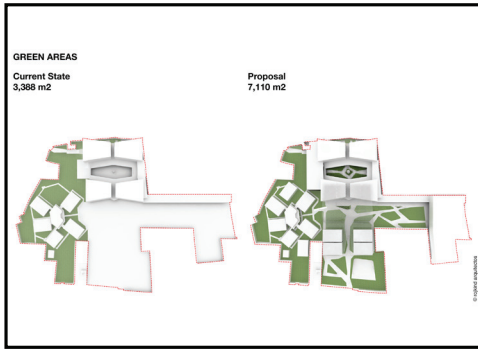
CNT\_06\_rojkind architectos.jpg  
**Image Caption:** Ground Floor Plan  
**Plan:** © rojkind architectos

\*courtesy of rojkind architectos



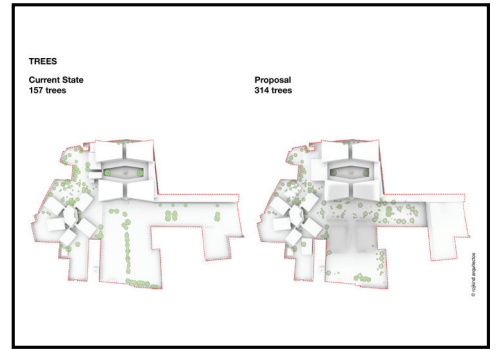
CNT\_07\_rojkind architectos.jpg  
**Image Caption:** First Level Plan  
**Plan:** © rojkind architectos

\*courtesy of rojkind architectos



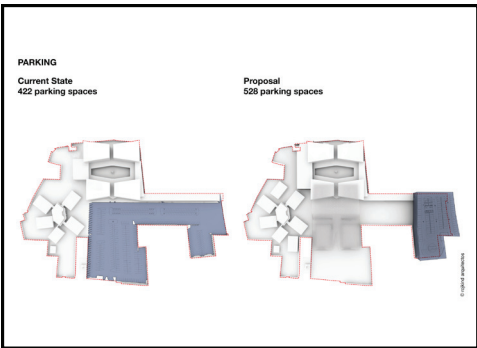
CNT\_08\_rojkind architectos.jpg  
**Image Caption:** Green Areas Comparison Diagram  
**Diagram:** © rojkind architectos

\*courtesy of rojkind architectos



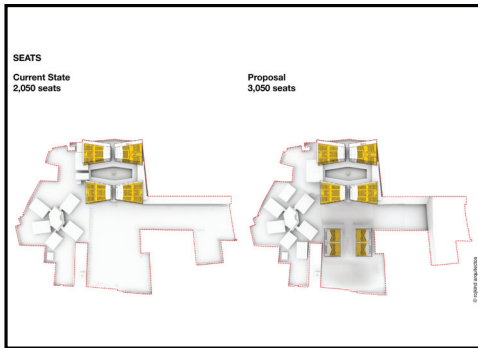
CNT\_09\_rojkind architectos.jpg  
**Image Caption:** Trees Comparison Diagram  
**Diagram:** © rojkind architectos

\*courtesy of rojkind architectos



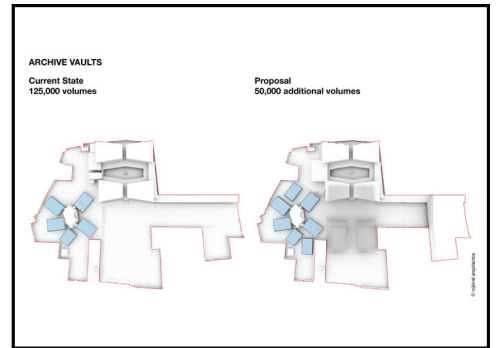
CNT\_10\_rojkind architectos.jpg  
**Image Caption:** Parking Comparison Diagram  
**Diagram:** © rojkind architectos

\*courtesy of rojkind architectos



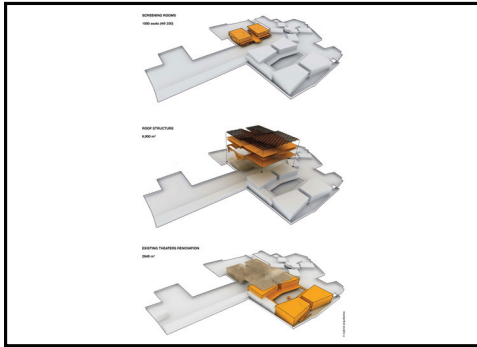
CNT\_08\_rojkind architectos.jpg  
**Image Caption:** Seats Comparison Diagram  
**Diagram:** © rojkind architectos

\*courtesy of rojkind architectos



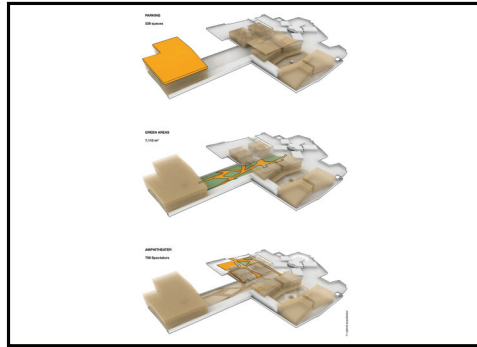
CNT\_09\_rojkind architectos.jpg  
**Image Caption:** Vaults Comparison Diagram  
**Diagram:** © rojkind architectos

\*courtesy of rojkind architectos



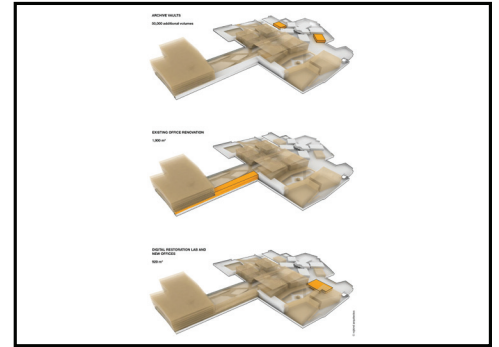
CNT\_13\_rojkind arquitectos.jpg  
**Image Caption:** Screening Rooms, Roof Structure, Existing Theaters  
**Renovation Diagram**  
**Diagram:** © rojkind arquitectos

\*courtesy of rojkind arquitectos



CNT\_14\_rojkind arquitectos.jpg  
**Image Caption:** Parking, Green Areas, Amphitheater  
**Diagram**  
**Diagram:** © rojkind arquitectos

\*courtesy of rojkind arquitectos



CNT\_15\_rojkind arquitectos.jpg  
**Image Caption:** Archive Vaults, Existing Office Renovation, Digital  
**Restoration Lab and New Offices Diagram**  
**Diagram:** © rojkind arquitectos

\*courtesy of rojkind arquitectos