

# SMARTIES

## 380 STUDENT UNITS UITHOF, UTRECHT

**W9**  
2003-2009



### brief

380 student units  
(90% single  
apartments, 10%  
shared apartments)  
with student amenities,  
Uithof, Utrecht

### client

SSH Utrecht, Utrecht

### design

Marlies Rohmer  
Architects and Planners

### team

Marlies Rohmer  
With:  
Floris Hund  
(collaborating architect)  
Michiel van Pelt (project  
coordinator)  
Arjan van Ruyven  
(project coordinator)  
Pepijn Nolet  
Marc de Vries  
Boris Briels  
Irene Bergholt

### urban masterplan

Art Zaaijer / OMA,  
Rotterdam

### engineer

ABT Adviesbureau voor  
Bouwtechniek, Velp

### installation engineer

LBP Lichtveld Buis en  
Partner, Utrecht;  
Installatie adviseurs  
VIAC, Houten

### contractor

Koninklijke BAM Groep,  
Bunnik

### photography

Rene de Wit  
Akzo Nobel  
Daria Scagliola and Stijn  
Brakkee

### design

2003

### completion

2009

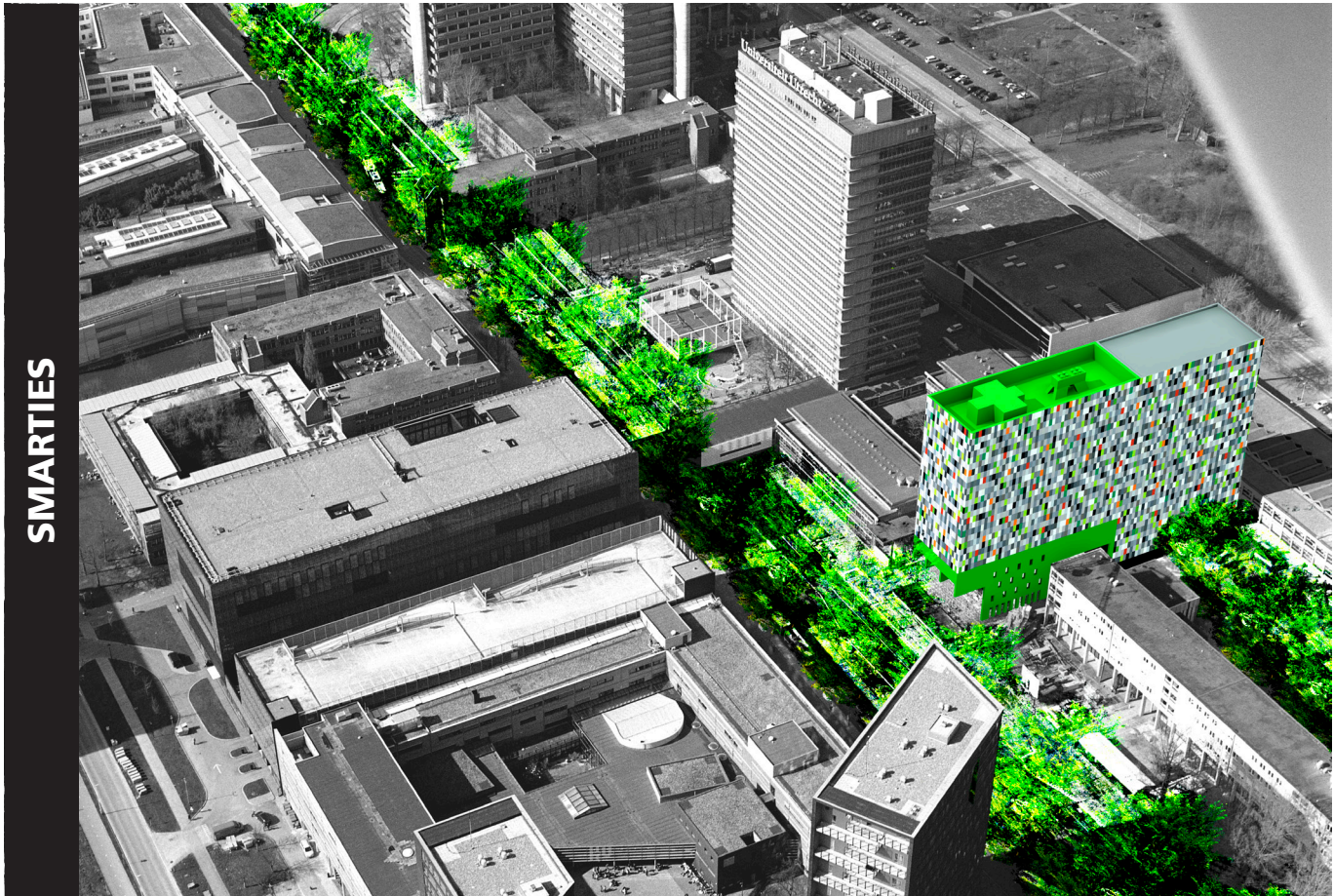
### surface / contract price

GFA: 18.600 m<sup>2</sup>  
12.828.000 excl. VAT,  
excl. building services

nomination Dutch Concrete Award 2009

nomination Rietveld Award 2009





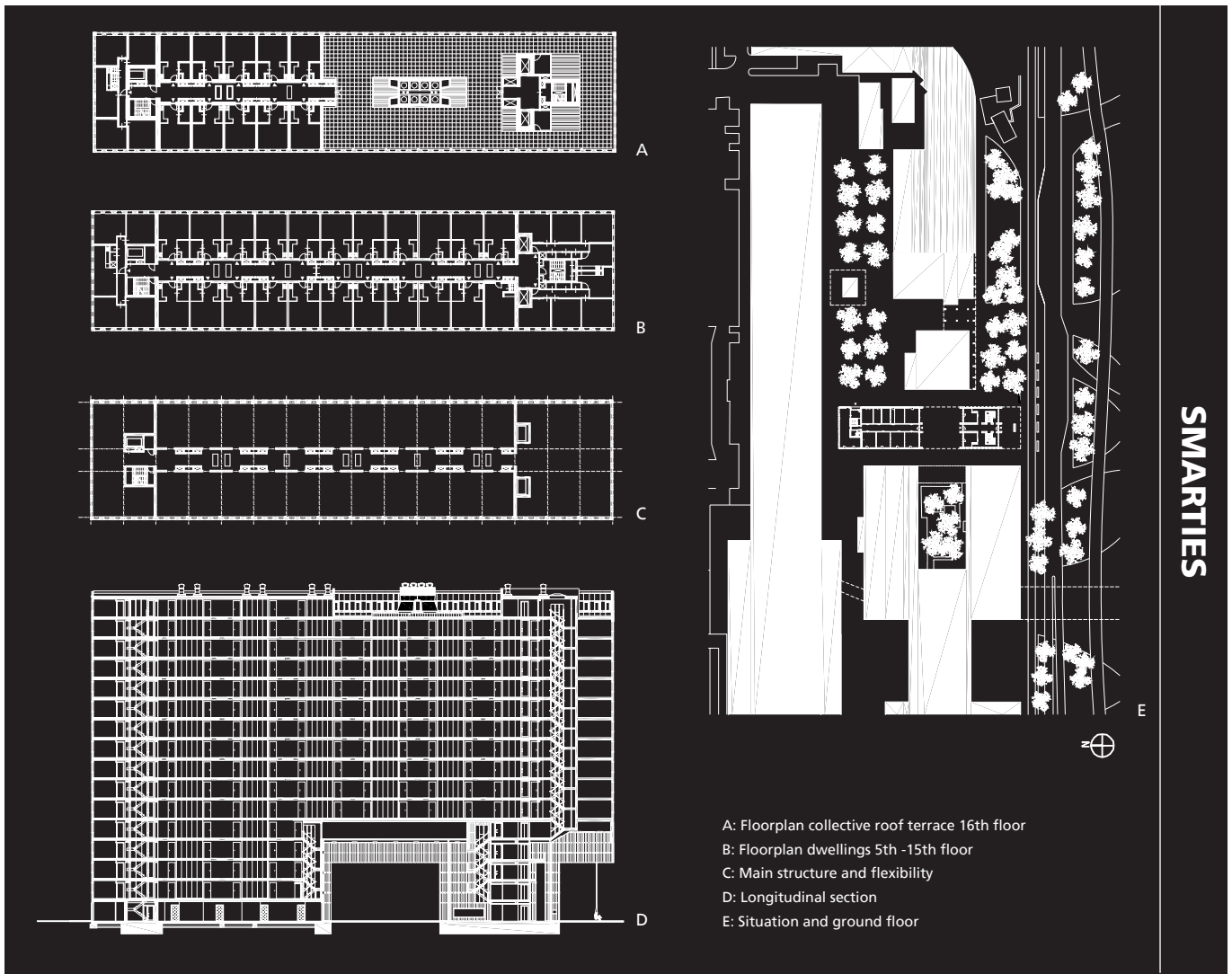
**SMARTIES**

**Smarties!** The building of student dwellings in the complex of buildings belonging to Utrecht University has transformed the Uithof site into a full-fledged campus. It will also help relieve the chronic housing shortage for young people in the city of Utrecht.

Within the line of freestanding buildings ('Objectenstrook') the master plan designed by OMA, our block of 380 independent and clustered rooms presents itself as a solitary mass with a 20 metre cantilever.







The spectacular main concrete supporting structure consists of four slabs that together form a theatrical single table leg. The 'leg' and its rocking bench dramatize the main entrance and create an urban rendezvous which distills the encounters and the to-and- from of all those students.

The colossal mass which rests on the main supporting structure consists of upright slabs penetrated by longitudinal tunnels, producing a building with high flexibility which will be a long-lasting addition to the Uithof.

