

**DEN  
KKA  
MER**

ARCHITECTUUR & ONDERZOEK

**VDG**

Van Dijk Groep Headquarters





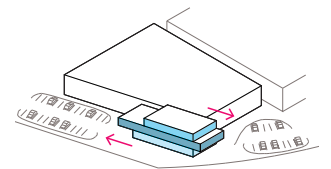


# VDG

Van Dijk Groep  
Headquarters

Located at a roundabout, near the village of Gemert, the Netherlands, the new VDG Headquarters building marks the gateway to the local business parks Wolfsveld and Smartpark.

VDG consists of multiple construction-related companies. The office building accommodates among others, VDG De La Roy, specialised in custom free form products out of insulation material, contractor VDG Unibouw, VDG Real estate and VDG Solar. In the design process the functional distribution is driven by specific requirements of the diverse companies. VDG De La Roy is located at the ground floor adjacent to the production facility in the hall. The first floor has been enlarged to give VDG Unibouw the desired extra space in order to be able to operate from one single floor. The second floor is the smallest of the three, which functions as a kind of penthouse for VDG Real estate, Solar and management.

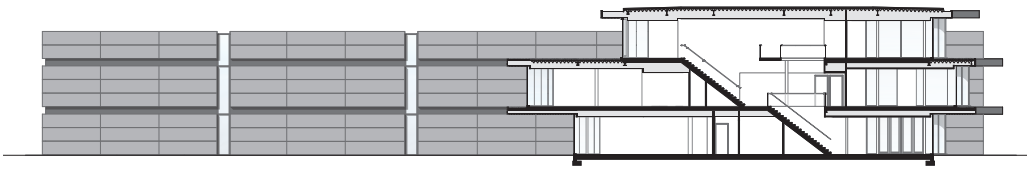


situation

±1:600

**DEN  
KKA  
MER**  
ARCHITECTUUR & ONDERZOEK

**Denkamer**  
Kerkstraat 2a, 5421 KX Gemert  
+31(0)492-780112  
info@denkamer.nl  
www.denkamer.nl



section

1:600

## VDG

Van Dijk Groep  
Headquarters

### Location

Gemert, NL

### Period

2016-2019

### Dimensions

935 m<sup>2</sup> net surface  
1101 m<sup>2</sup> gross area  
4073 m<sup>3</sup> gross content

### Project team

Dennis van de Rijdt, Peter  
Verschuren, Leonique  
Winnen

### Interior architect

STRK

### Structural engineer

Bouw-adviesbureau Van der  
Zanden

### Contractor

Unibouw

### Image credits

René de Wit, photos  
Denkkamer



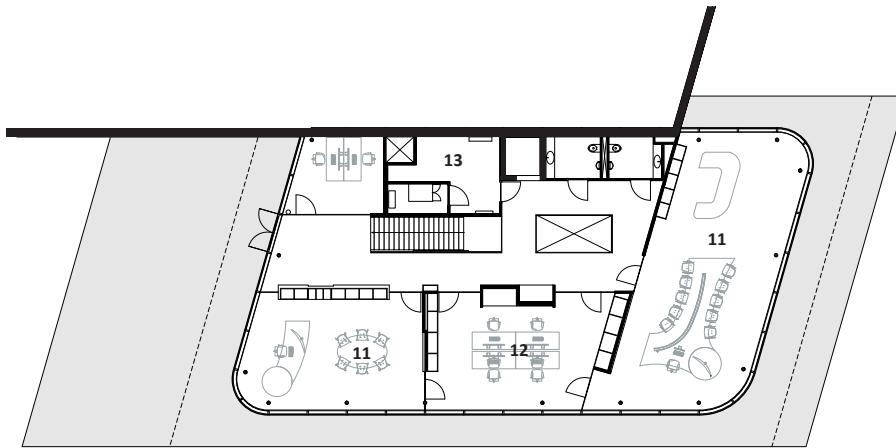
**DEN  
KKA  
MER**  
ARCHITECTUUR & ONDERZOEK

### Denkkamer

Kerkstraat 2a, 5421 KX Gemert  
+31(0)492-780112  
info@denkkamer.nl  
www.denkkamer.nl

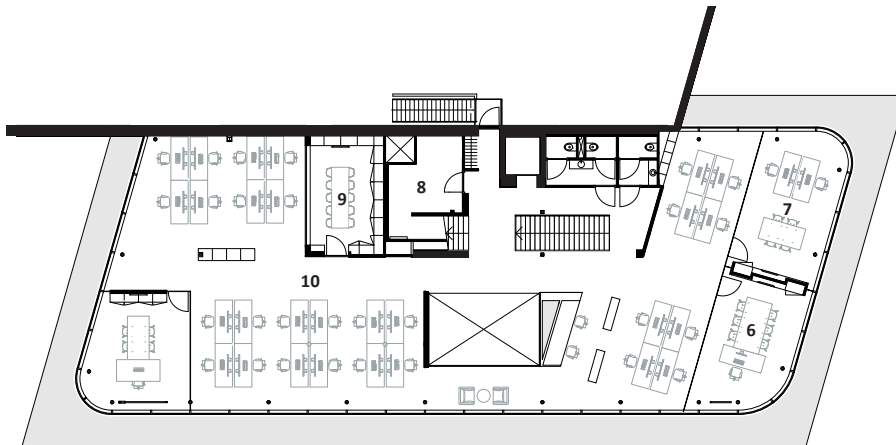
# VDG

Van Dijk Groep  
Headquarters

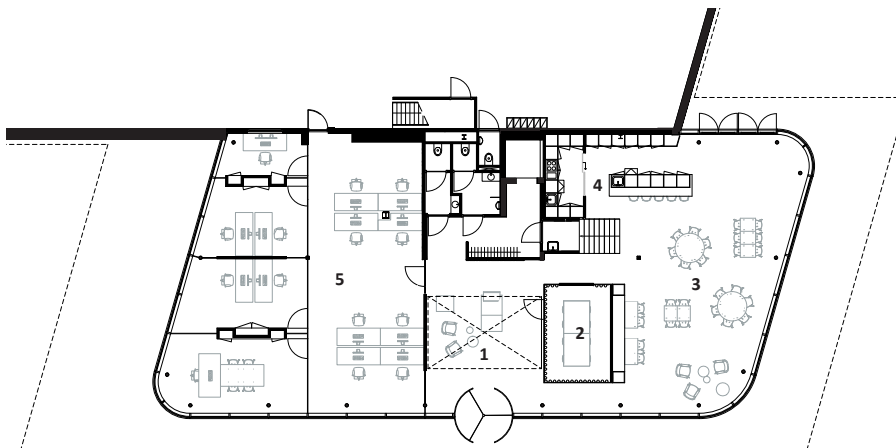


second floor

- 1 Lobby
- 2 Conferenceroom
- 3 Canteen
- 4 Kitchen
- 5 VDG De La Roy
- 6 VDG Unibouw board
- 7 VDG Unibouw sales
- 8 Repro
- 9 VR-room
- 10 Unibouw projects
- 11 VDG board rooms
- 12 Management office
- 13 HVAC / IT



first floor



ground floor

1:350



**DEN  
KKA  
MER**  
ARCHITECTUUR & ONDERZOEK

**Denkkamer**  
Kerkstraat 2a, 5421 KX Gemert  
+31(0)492-780112  
info@denkkamer.nl  
www.denkkamer.nl

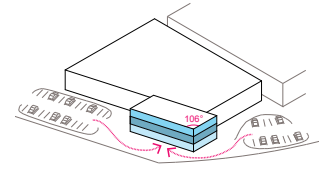




**VDG**

Van Dijk Groep  
Headquarters

The main entrance is located on the north side in the middle of the longitudinal façade. This with the aim of strengthening the collective feeling of VDG. Employees of the various companies, management, customers and guests are all entering through this entrance. The lobby and canteen behind it are designed to meet informally and share knowledge. A void has been made in the heart of the building, establishing relation between the entrance area and floors above. The supporting functions, such as kitchen, toilets and wardrobes, have been positioned against the hall with the stairs in front of it forming a central connecting axis. The work and meeting places have been pushed towards the glass facade, so that they take maximum advantage of the light and the view.



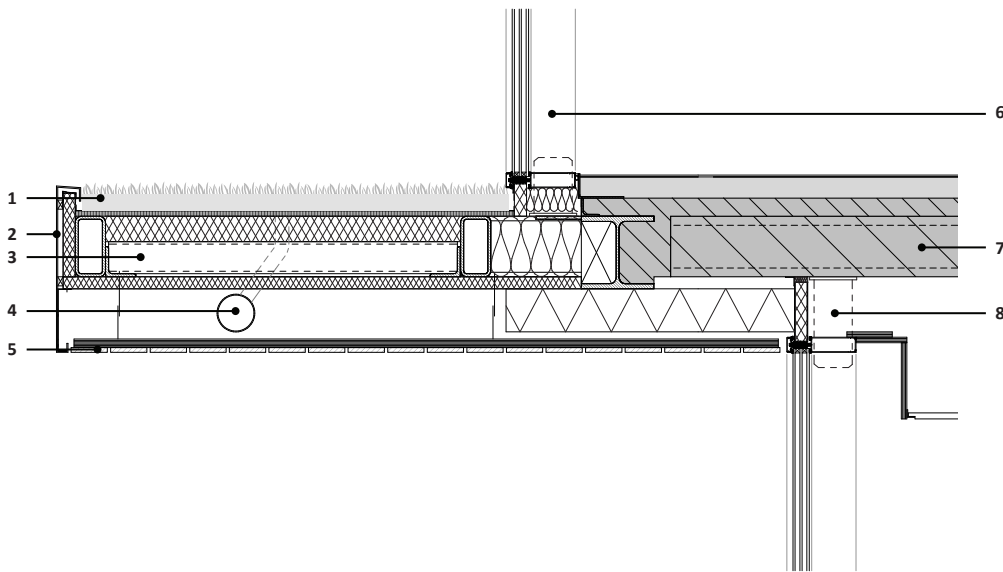
**DEN  
KKA  
MER**

ARCHITECTUUR & ONDERZOEK

**Denkammer**  
Kerkstraat 2a, 5421 KX Gemert  
+31(0)492-780112  
info@denkkamer.nl  
www.denkkamer.nl

# VDG

Van Dijk Groep  
Headquarters

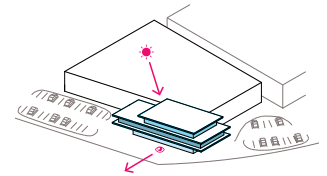


- 1 artificial grass roofing
- 2 aluminium composite
- 3 steel cantilevering console
- 4 internal drainage
- 5 thermal enhanced Ash wood
- 6 curtain wall, structural look
- 7 concrete hollow core slab
- 8 blind mounts

detail

1:25

The cantilevered canopies protect the full-glass facades from solar radiation with the aim of preventing excessive heating of the office spaces behind. At the same time, the awnings enhance the panoramic view from the office spaces over the provincial road and towards the forest area on the north side of the building. The top and bottom of the awnings are finished in artificial grass and thermal enhanced Ash wood to enhance the connection with the green context. The front of the awnings is provided with an anodized aluminium composite that continues in the façade of the hall. Pushed inward as a recessed line in the façade with exactly the same height as the awnings. As a result, the office and hall melt together and form a whole instead of being two separated buildings.



**DEN  
KKA  
MER**  
ARCHITECTUUR & ONDERZOEK

**Denkammer**  
Kerkstraat 2a, 5421 KX Gemert  
+31(0)492-780112  
info@denkkamer.nl  
www.denkkamer.nl





**VDG**

Van Dijk Groep  
Headquarters



**DEN  
KKA  
MER**  
ARCHITECTUUR & ONDERZOEK

**Denkamer**  
Kerkstraat 2a, 5421 KX Gemert  
+31(0)492-780112  
info@denkamer.nl  
www.denkamer.nl