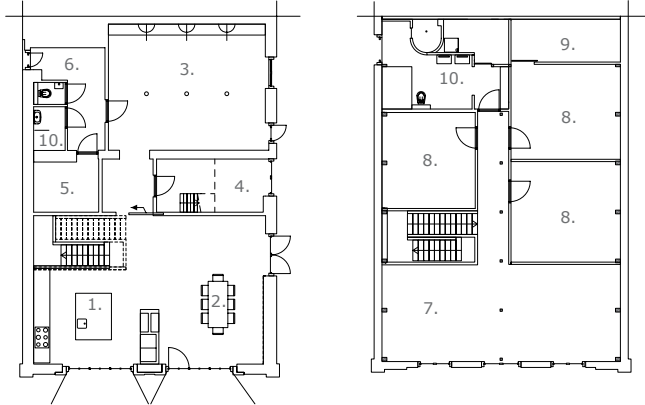


MONUMENTAL COACH HOUSE, Breukelen (NL)

1. kitchen
2. dining
3. living
4. study
5. storage
6. entrance
7. fire-place
8. sleeping
9. walk- in closet
10. bathroom



Projecttoelichting

A monumental coach house and stable from 1760 becomes a spacious house. A mishmash of curiosities is removed. Historical elements became visible again. The stable, still complete with hay racks and troughs, is used as a living room. The tack room becomes the entrance hall and the coach house the new kitchen. Some oversized high doors reappeared during the demolition. This created a surprising connection between living room and kitchen. In this high dimension, a new staircase of solid oak wood is placed as a modern addition. It has become the centre of the house, and daylight falls from the roof into the new kitchen.

A double hood with wooden trusses determines the atmosphere upstairs. A seating around a wood stove is added as a pleasant lounge. From here the bedrooms and bathrooms are accessible as well.

Office: Zecc Architecten, i.a.w. BYTR architecten
Client: private
Projectteam: Marnix van de Meer, Richel Lubbers, René de Korte, Victor Verhagen
Entrepreneur: Vendrig Montfoort
Location: Breukelen (NL)
Design: summer 2011
Realisation: august 2012
Photography: Stijnstijl



ZECC
GRONDES ARCHITECTUUR



BYTR