



DIPARTIMENTO DI ARCHITETTURA E DISEGNO INDUSTRIALE
LUIGI VANVITELLI

Seconda Università degli Studi di Napoli
Dipartimento di Architettura e Disegno Industriale Luigi Vanvitelli
Corso di laurea in Architettura a.c.u.

Insegnamento: A00102 - ARCHITETTURA DEGLI INTERNI
a. a. 2014|2015

GRUPPO



Alfredo Guglielmo Russo



Liberato Bellopede Di Meo

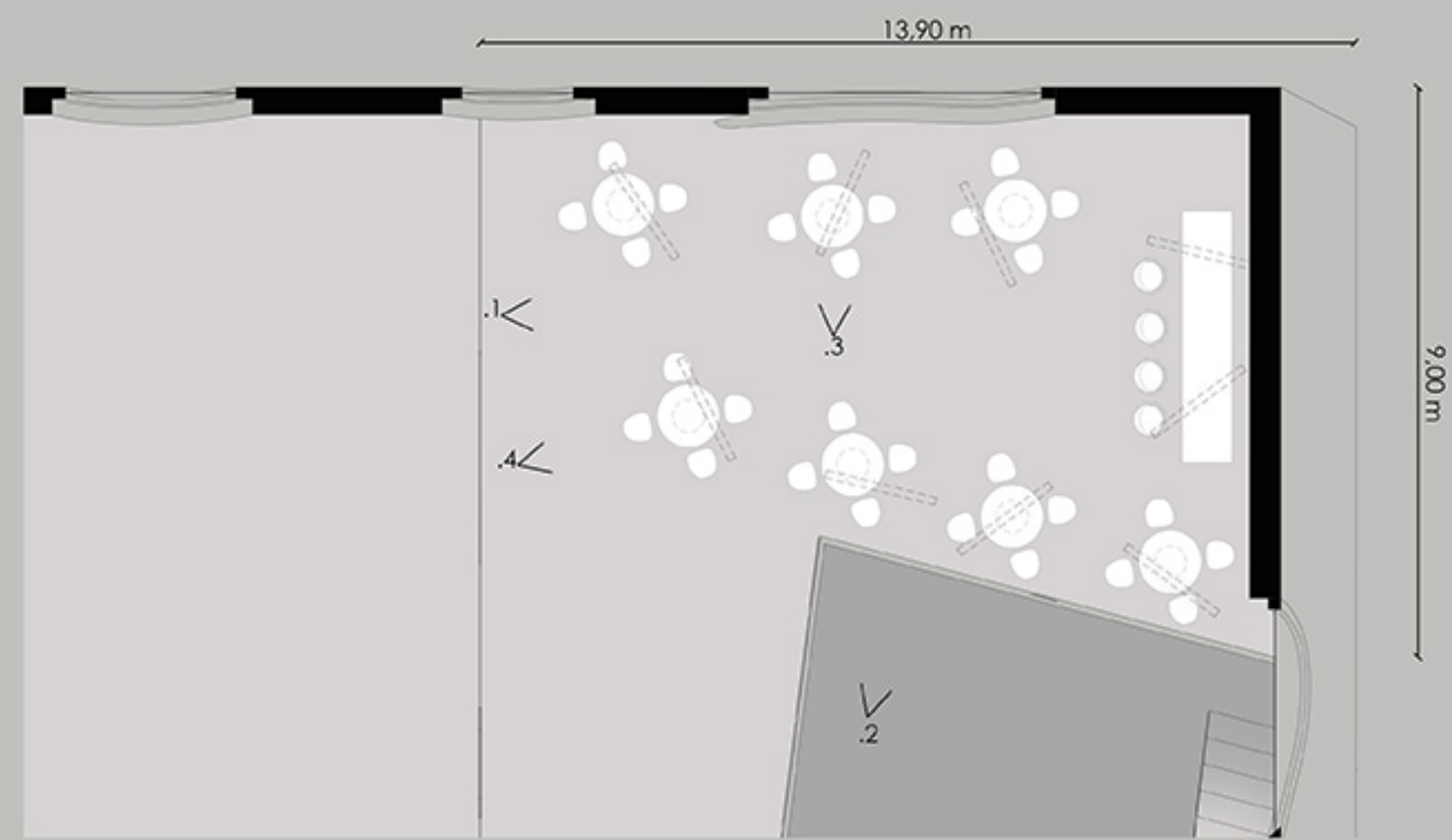
PROGETTO



THE CUBE?

The project called tends to redevelop the square in the port area of Çanakkale. Starting from simple shapes, such as a square and then get to more organic forms, you get what will be the "underground Museum" in Çanakkale, who not only wants to be just a museum, but the objective is to reach by itself become a monument to the square, in order to attract tourists and arouse curiosity of all those people that in "avvicinarsi the harbor from the sea will see this structure.

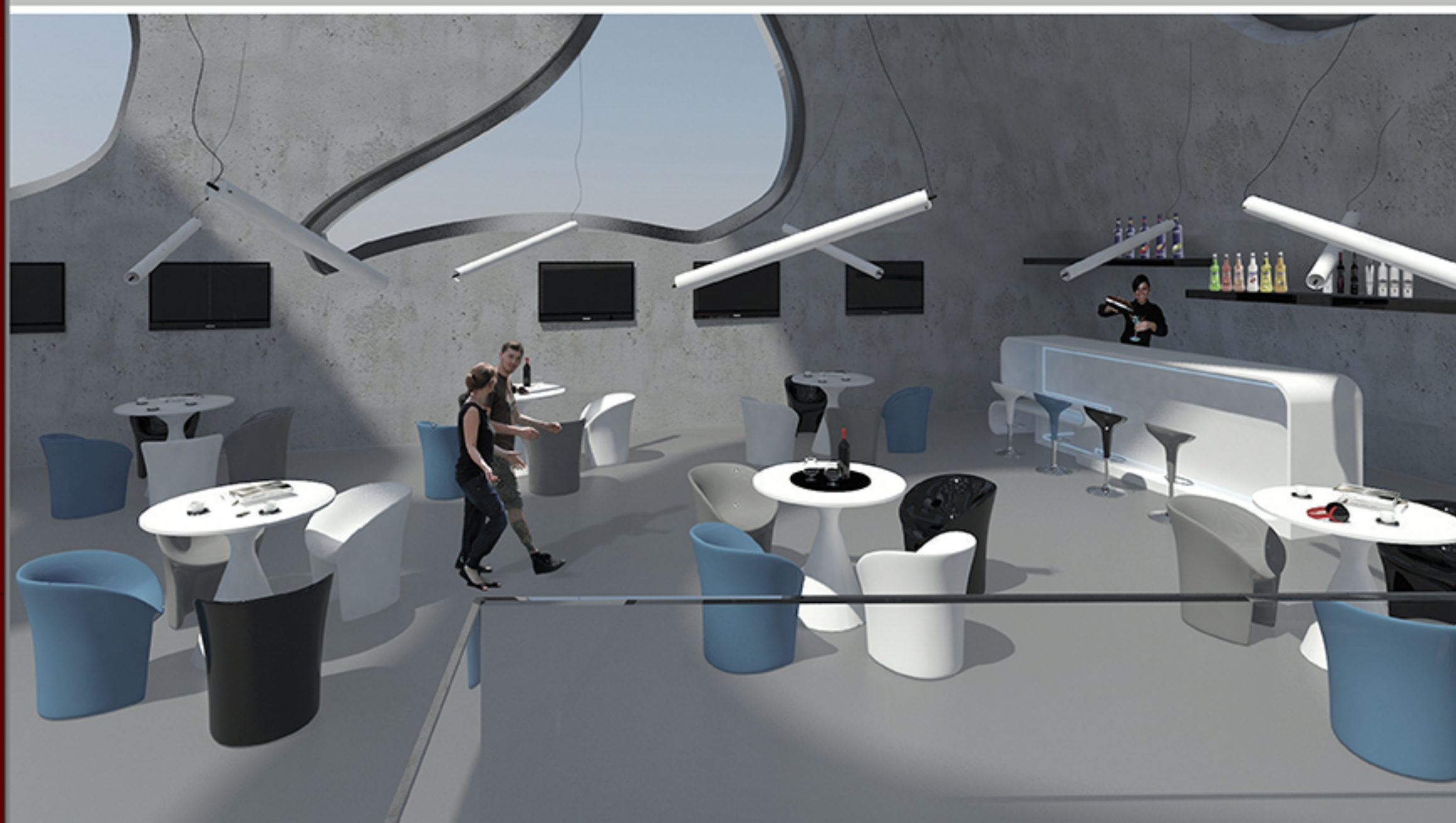
DOCENTE: PROF. ARCH. CLAUDIO GAMBARELLA



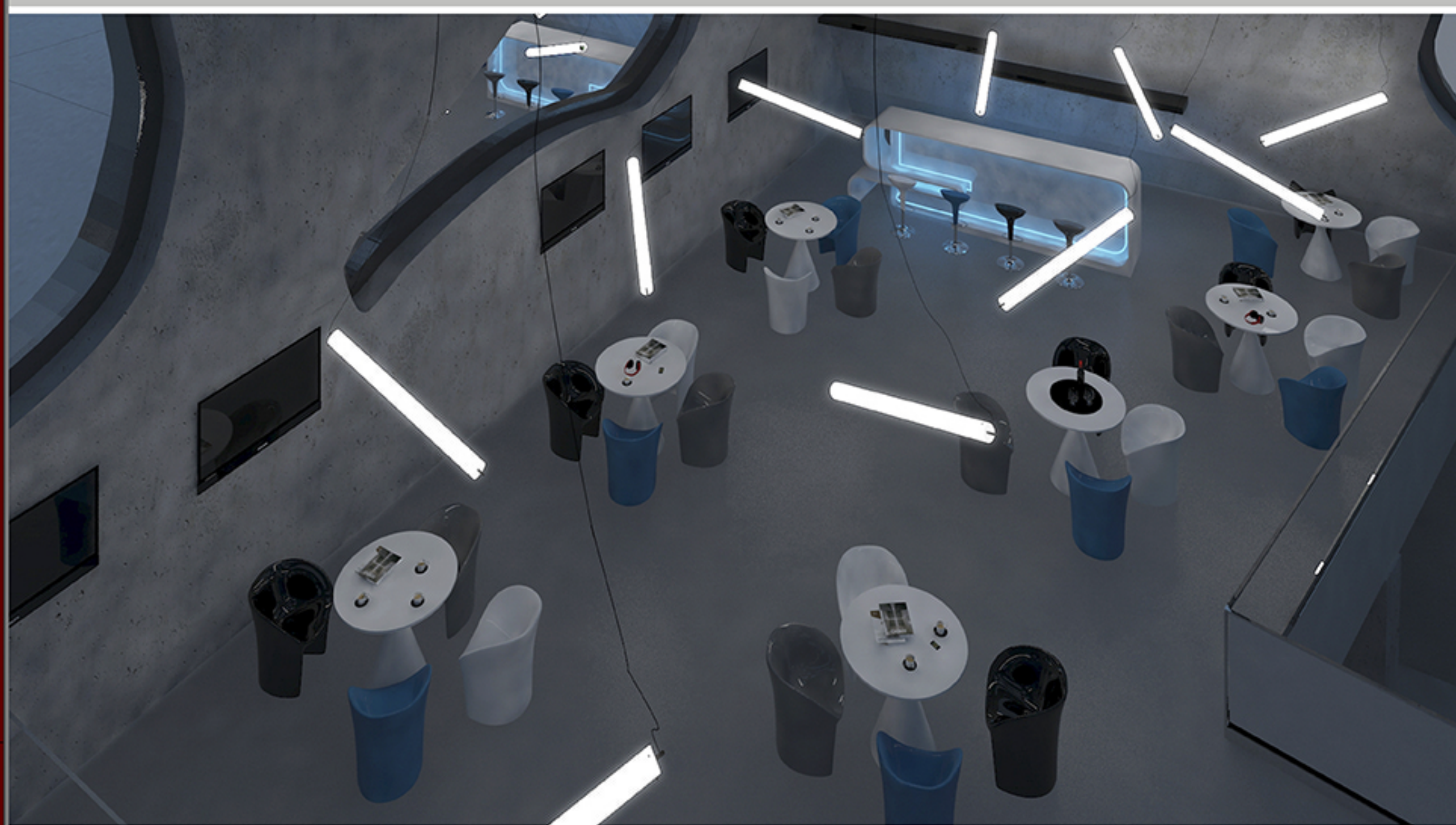
Pianta arredamenti // Plant furnished Scala 1:100



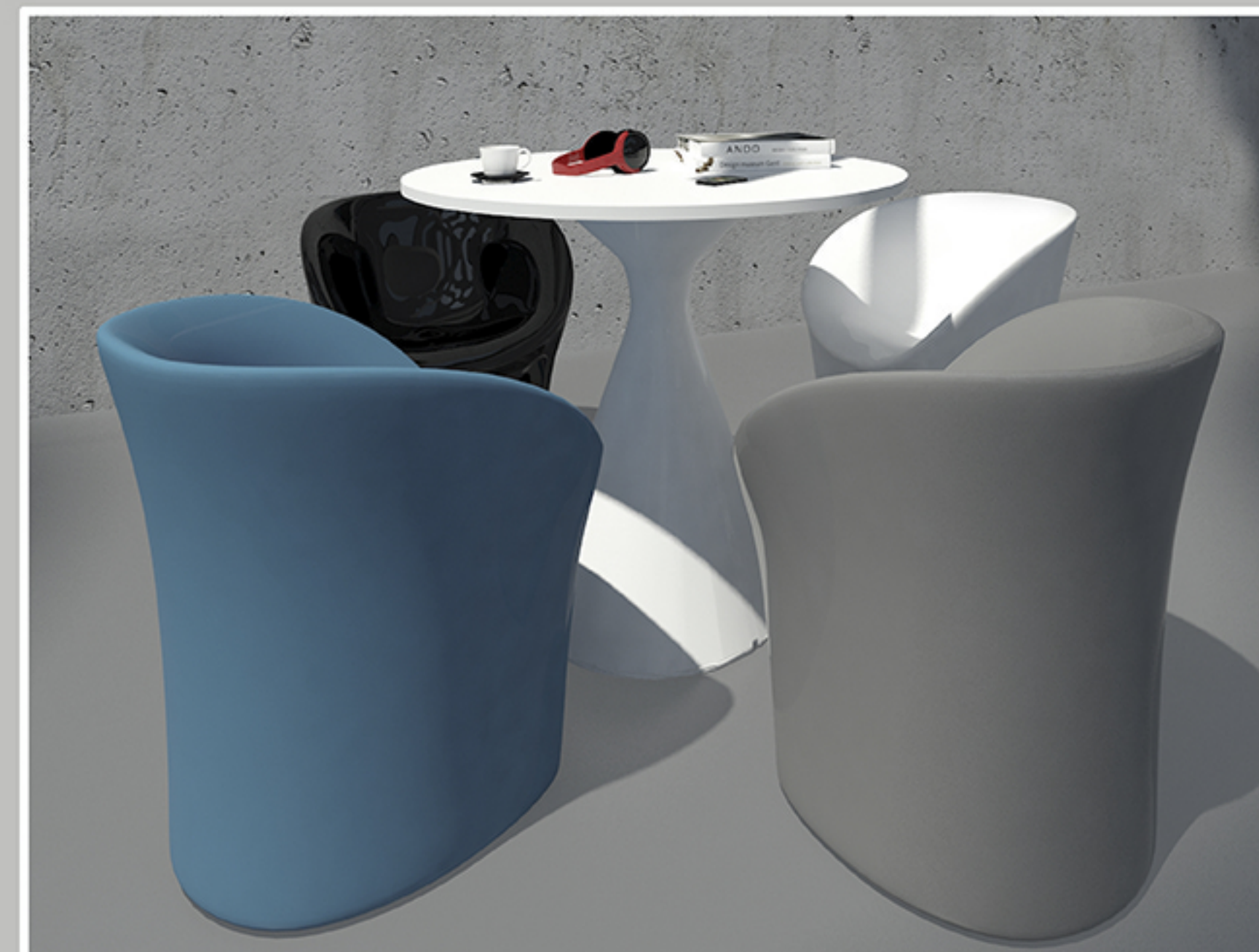
Render .1



Render .2



Render .4

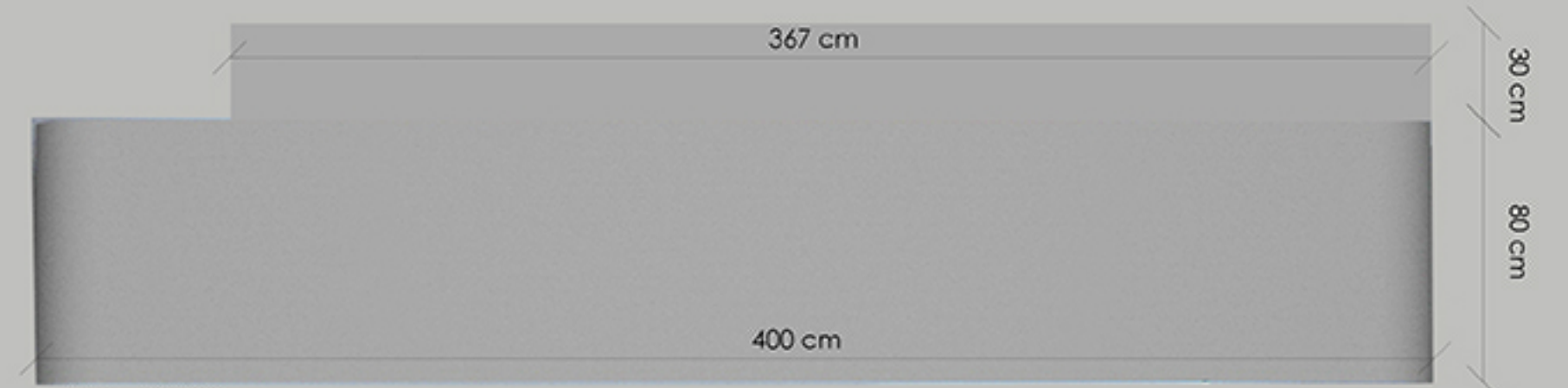


Render .3

Bancone Bar// Desk Bar scala 1:20



Prospetto// Prospect



Pianta// Plan



PRODOTTO: Bancone Bar// Desk Bar
DESCRIZIONE: It is an advanced material made from natural minerals such as aluminum hydroxide, and pure acrylic polymers. It is therefore a synthetic material, born of human imagination, the search for new solutions and reflection on the demands that come from the world of design. Being a resin, flexible and very easy to work looks like a material with unique characteristics, which allows you to create seamless surfaces and can transform any space offering unlimited possibilities for customization both indoors and outdoors, integrating perfectly with the aesthetics of materials such as steel, wood, tile, glass and granite or natural stone.

MOROSO



AZIENDA: Moroso
PRODOTTO: Moon
DESIGNER: Tokujin Yoshioka
DESCRIZIONE: The chairs are in colored polyethylene 100% recyclable. Versions are: mass colored, glossy, lacquered Metallic.
The inner shell is made through a process of rotomolding polyester with inner flexible mass of polyurethane.



MATERIA



AZIENDA: Materia
PRODOTTO: Cone
DESIGNER: Carlo Ojerstam
DESCRIZIONE: With its fresh line drawing geometric, the table "Cone" exudes a simple elegance, with an exciting mix of materials. Stand printed polythene, plastic. Circular or oval, the table can be laminated compact. The board has a duct in the support and, if necessary, can be equipped with a supply port for the electrical connections and network.



martinelli luce



AZIENDA: Martinelli luce
PRODOTTO: Pisillo
DESIGNER: Emiliana Martinelli
DESCRIZIONE: Single pendant light widespread consists of a polycarbonate tube suspended with one or two steel cables, wired for two fluorescent tubes in white / red / blue / green.



Herman Miller

AZIENDA: Herman Miller
PRODOTTO: Bombo
DESIGNER: Stefano Giovannone
DESCRIZIONE: The Bombo Stool has changed the idea of how it could look a stool. The beautiful design of Stefano Giovannone has achieved commercial success and critical acclaim immediately. Why? Just look! Better yet, sit back and enjoy the comfort. It has a chromed steel base and seat in injection molded plastic that rotates 360 degrees.



teknai

AZIENDA: Teknai
PRODOTTO: Pavimento in resina extra epox
DESIGNER: Tokujin Yoshioka
DESCRIZIONE: Formulated component transparent, based on epoxy resin. Total thickness of the system: mm 3 / 5. You get shiny surfaces, transparent and 3D effect. Mg: 1443.

