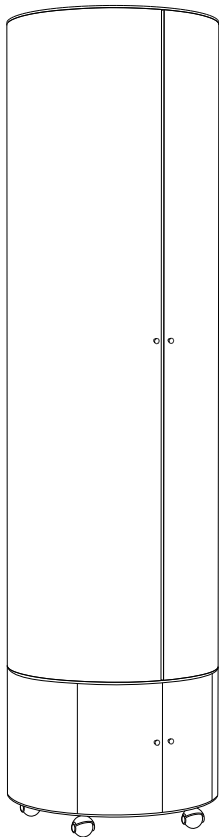


**WHAT ABOUT
FOR
COVID_19**

Helios_PRO



Helios_PRO is a hospital tool to help staff and patients during an emergency recovery.

Helios_PRO is helpful, smart, hi-tech and visionary.



WHAT ABOUT FOR COVIT_19

Today's global situation caused by the spread of COVID_19 is creating a defeat for national healthcare systems. These problems are found both in states with a powerful economy and especially in the most fragile ones. The lack of beds needed for every level of the disease cannot be made up for in almost all nations. Many cities are working to build emergency hospitals to receive every patient. Governments are building new hospitals inside sheds, sports arenas, hangars or in temporary structures, such as tents or containers located in the areas surrounding the hospitals. Every nation is coping with this problem by transforming spaces incongruous to hospital function.

The problem of the missing of the minimum medical equipment necessary for all patients is being encountered. Hospitals are overloaded with work, to the point of exhaustion; medical staff are unable to treat all patients adequately and provide the necessary attention to each guest.

Companies manufacturing medical machinery and equipment have increased production of all necessary medical equipment, and many companies in other industries have converted production to manufacture things like masks and respirators, but also disinfectants, gloves and disposable gowns.

In emergency hospitals, healthcare workers are under constant stress to try to provide the necessary care for everyone. The virus also has an extremely dangerous airborne transmissibility, so healthcare workers are at high risk working on contact with infected patients.

Helios_PRO DEVICE

Helios_PRO is a high-tech tool for the support of medical staff and focused on the patient's well-being.

Inside **Helios_PRO**, some technological mechanisms help doctors to acquire health data of the patient. Patients can take advantage of the technological tools to increase their well-being inside the hospital and be in contact with the outside world.

Ease to use, and smart technologies are at the heart of **Helios_PRO**.

You can install proposed plugs and replace with whatever else is needed.



Light Therapy

Also known as phototherapy, is a treatment in which the patient is exposed to an artificial light source. The therapy primarily treats major depressive disorder with seasonal patterns (formerly known as seasonal affective disorder, or SAD). Light is used to treat other conditions, including sleep disorders and other types of depression. The use of these lamps would help the patient to settle in dimly lit places.

← Beurer TL 100 daylight therapy lamp



Action-Camera

The video camera is an essential tool to monitor the patient during the Helios period of stationing. The data read from the room allows the medical staff to avoid having to visit the patient. Besides, a higher amount of data can be recorded and included in the medical record.

← GoPro HERO8



Tablet

The patient can use the tablet to connect with family and friends during the hospital stay. The period inside the hospital can be long and tiring, and for the well-being of people, it is necessary to be able to stay in contact with the outside world but avoiding any contact. The patient can make video calls, read the news or distract themselves.

← iPad Air 10.5 inch



Arms

The devices are connected to the Helios_PRO supporting structure using practical articulated arms readily available. The arms support the devices to be able to move for the widest fruition with smooth movements. Extend the action area of Helios_PRO and adjust it to the most suitable position for the patient.

Helios_PRO

SETTING

Helios_PRO has unique and multifunction digital and constructive features. **Helios_PRO** is designed for high connectivity to the hospital to acquire all the data in the patient's medical records.

Helios_PRO is designed for the well-being of patients. Inside it is also possible to add tools that increase the patient's happiness. COVID_19 patients cannot have contact with the outside world and take care of themselves than inside **Helios_PRO** it is possible to add tools for personal care.



Wi-Fi

All installed devices have a Wi-Fi connection with which you can manage the devices. The web connection is essential for the use of tablets for video calls or entertainment. The connection of the devices to the wireless network of the hospital allows access to servers and digital databases.



Cloud

The installed electromedical devices detect the patient's biological parameters and send them to a dedicated platform. All medical records data can be implemented remotely without patient contact and uploaded to the cloud. The data can also be transmitted to competent and authorized research institutes and used in scientific research.



Smart

Helios_PRO is an innovative project, which brings benefits to the hospital system and patients, integrating specific functions and well-being. The design is attractive, pleasant and fluid. When Helios_PRO opens, it becomes a setting that embraces the patient and takes care of his privacy.



Sustainable

Helios_PRO materials must be as environmentally friendly as possible. The project was born with the desire to develop materials with the lowest environmental impact. Sustainable materials, such as fabrics and plastics, must have the same performance and aesthetic characteristics as normal ones and pass all the strict quality tests.



Hygienic

Helios_PRO complies with all legal and health regulations of the strict regulations. The tool is entirely hypoallergenic, antibacterial, comfortable and ecological. It can be used in all hospital departments and is easily washable and removable fabrics.

Helios_DIY

MATERIAL

Helios_PRO is composed of a few materials that are functional to design and usability. It is made of two main parts, the fixed structure and the opening panels.

The tool is on wheels to be moved. At the bottom, there is a compartment for carrying objects and the technical compartment for housing cables and batteries.

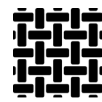
The central part consists of a pillar to which the mechanical breaches and the closing panels are attached. The doors are made of fabric and can be opened to create a screen.

The top is composed of a closing element to preserve the equipment inside **Helios_PRO**.



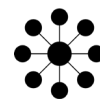
Structure

The structure is strong, durable and easily washable. It can be made of metal or moulded in durable and eco-friendly plastic materials. The solid and handy base consists of a storage compartment and the technology box. The elements that make up Helios_PRO are assembled for maximum rigidity and impact resistance.



Textile

The panels that make up the body of Helios_PRO are covered in fabric. We propose that the exterior can be a technical textile specific to a hospital. When you open the panels, it becomes a screen and a scenography. The internal fabric can be of various colours and textures, for the pleasure of the patient and increase well-being.



Pillar

Helios_PRO has a central pillar that supports the selected devices. The mechanical arms are clamped to the central pillar for maximum customization. You can add devices and change the position according to your needs. The central pillar contains the necessary cables to power the devices.



Wheels

The system of wheels installed at the base of Helios_PRO makes it flexible and easy to handle. The system can also be connected to a mobile robot to control Helios_PRO from other devices networked. So reducing the presence of hospital staff to avoid contact with patients.



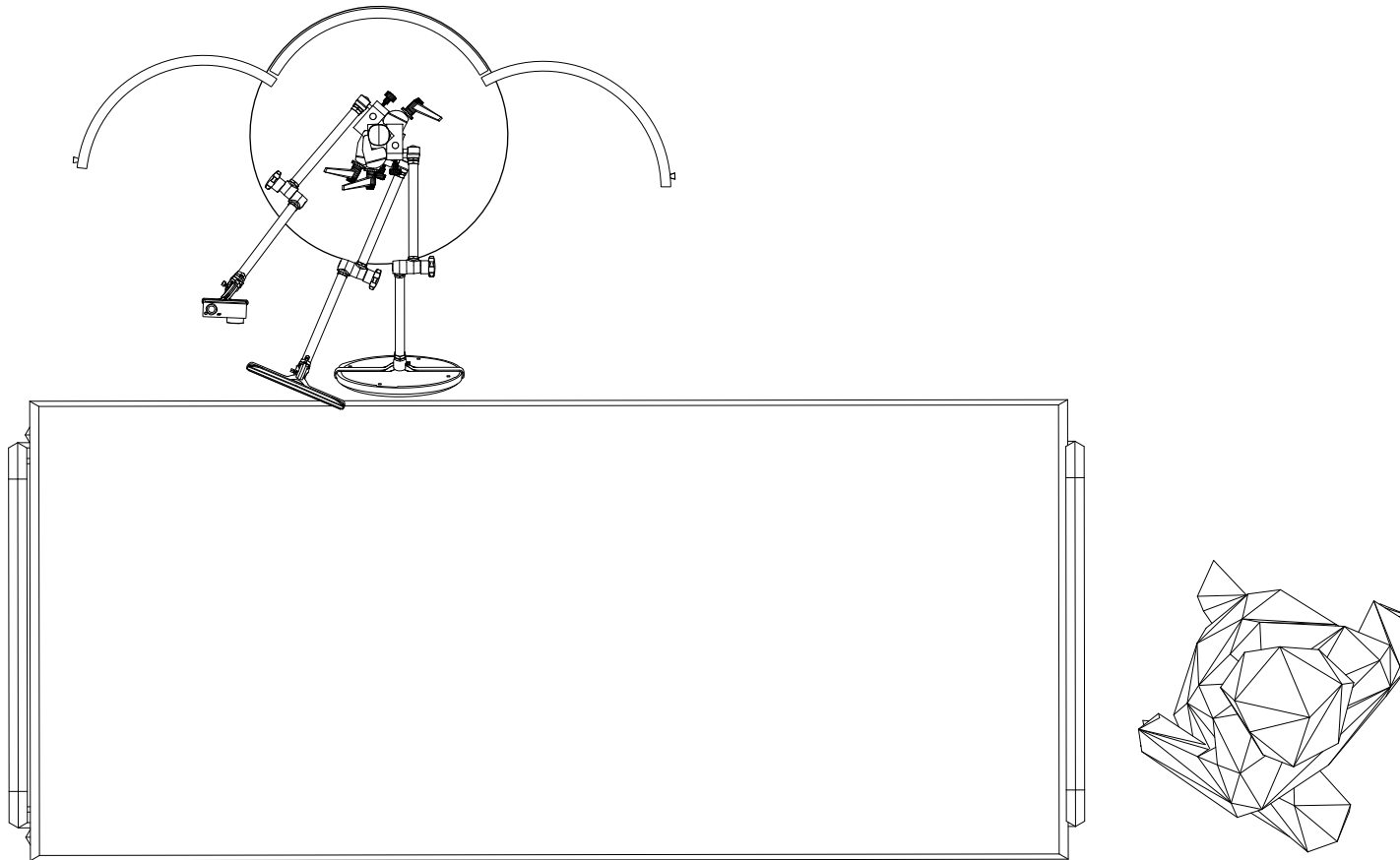
Battery

For maximum usability of Helios_PRO, light and compact battery is provided inside the base. The battery allows you to use the devices without the need to connect to electricity. The battery can also manage the movements of the mechanical arms and provide power for a long time. An electric cable is installed in case of use without battery.

Helios_PRO

TOP

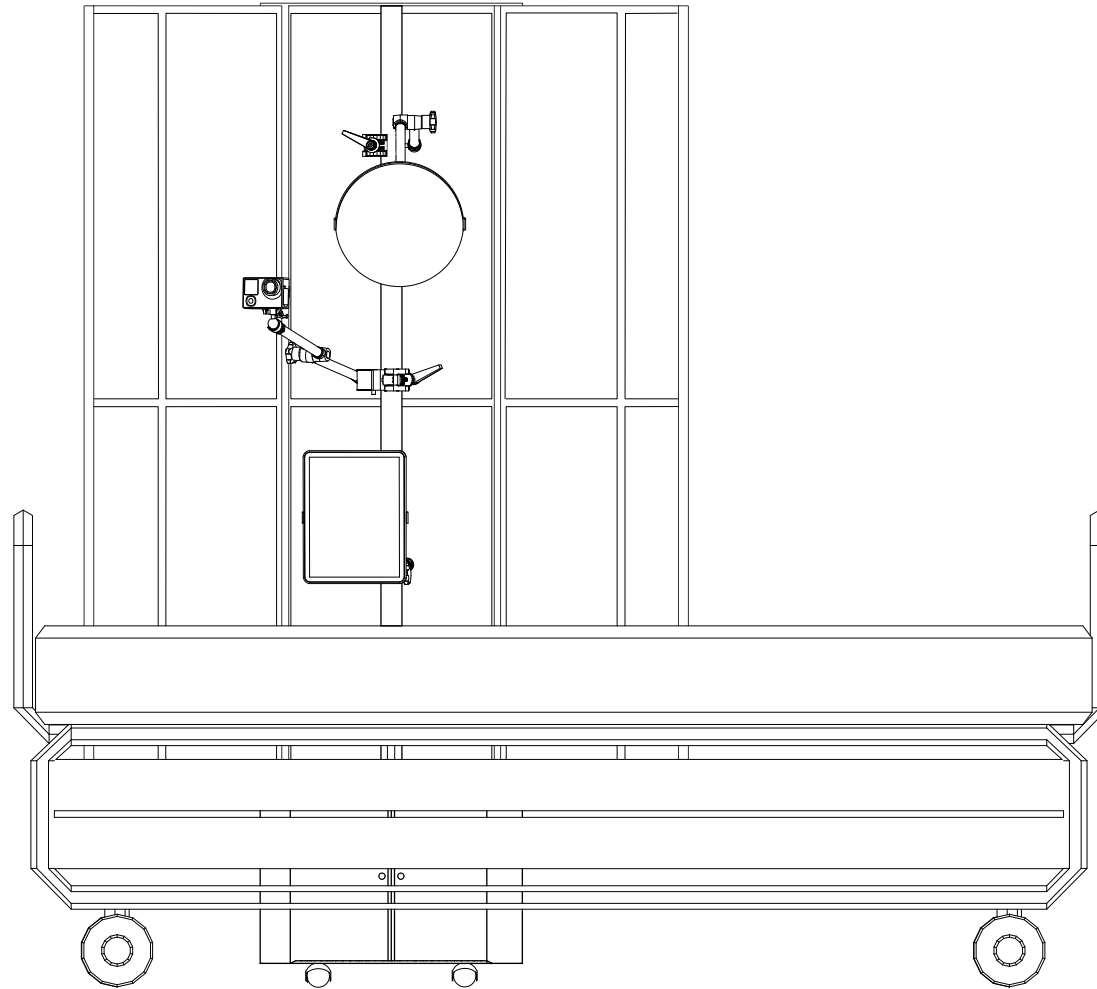
When **Helios_PRO** is open allows the patient to access multiple functions, such as a Light Therapy lamp and tablet for video calls and video screening. The Action-Cam transmits via Wi-Fi live essential data to a central computer or other devices.



Helios_PRO

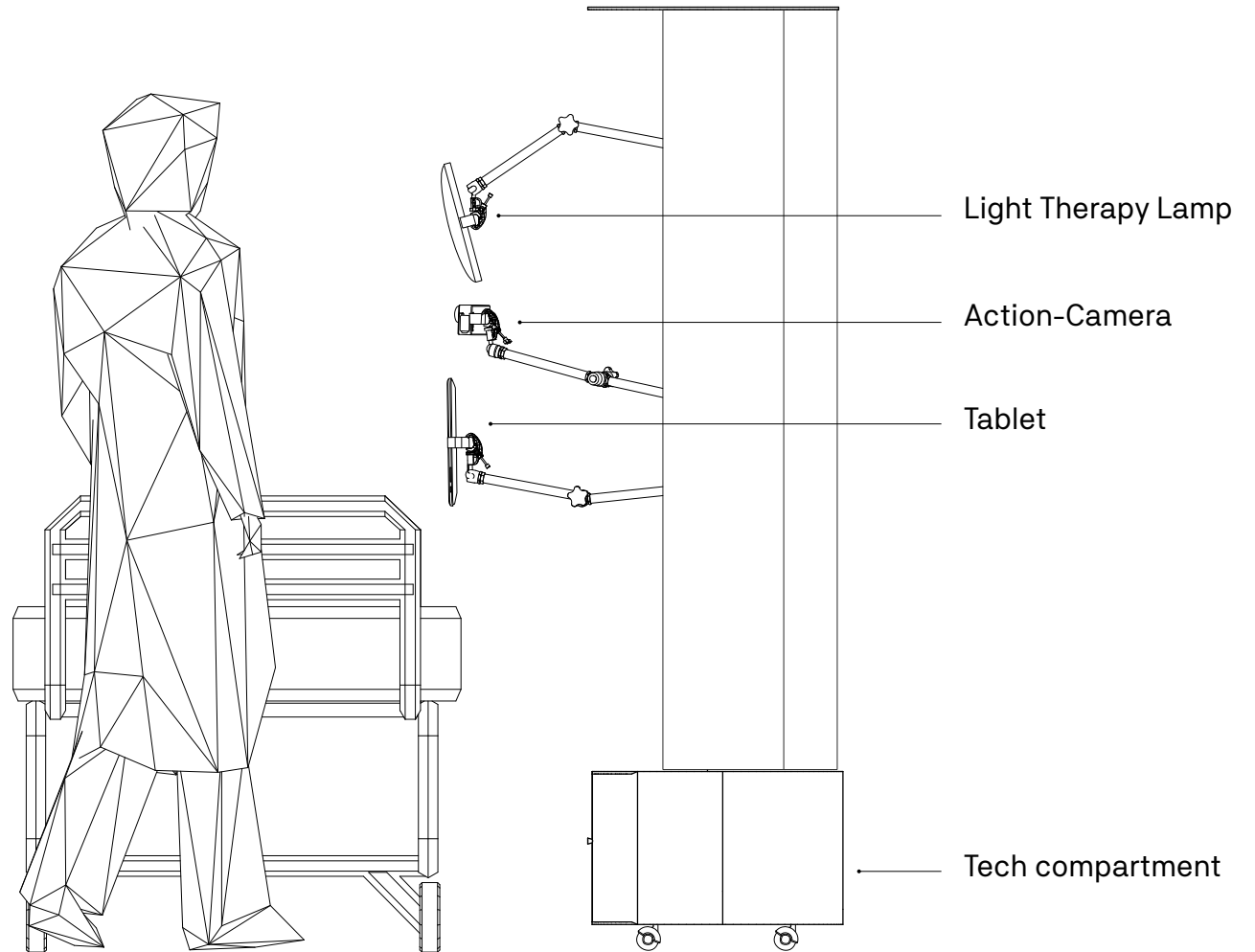
FRONT

Helios_PRO is at easy reach of medical staff and patient, and you can move **Helios_PRO** from bed to bed thanks to casters.

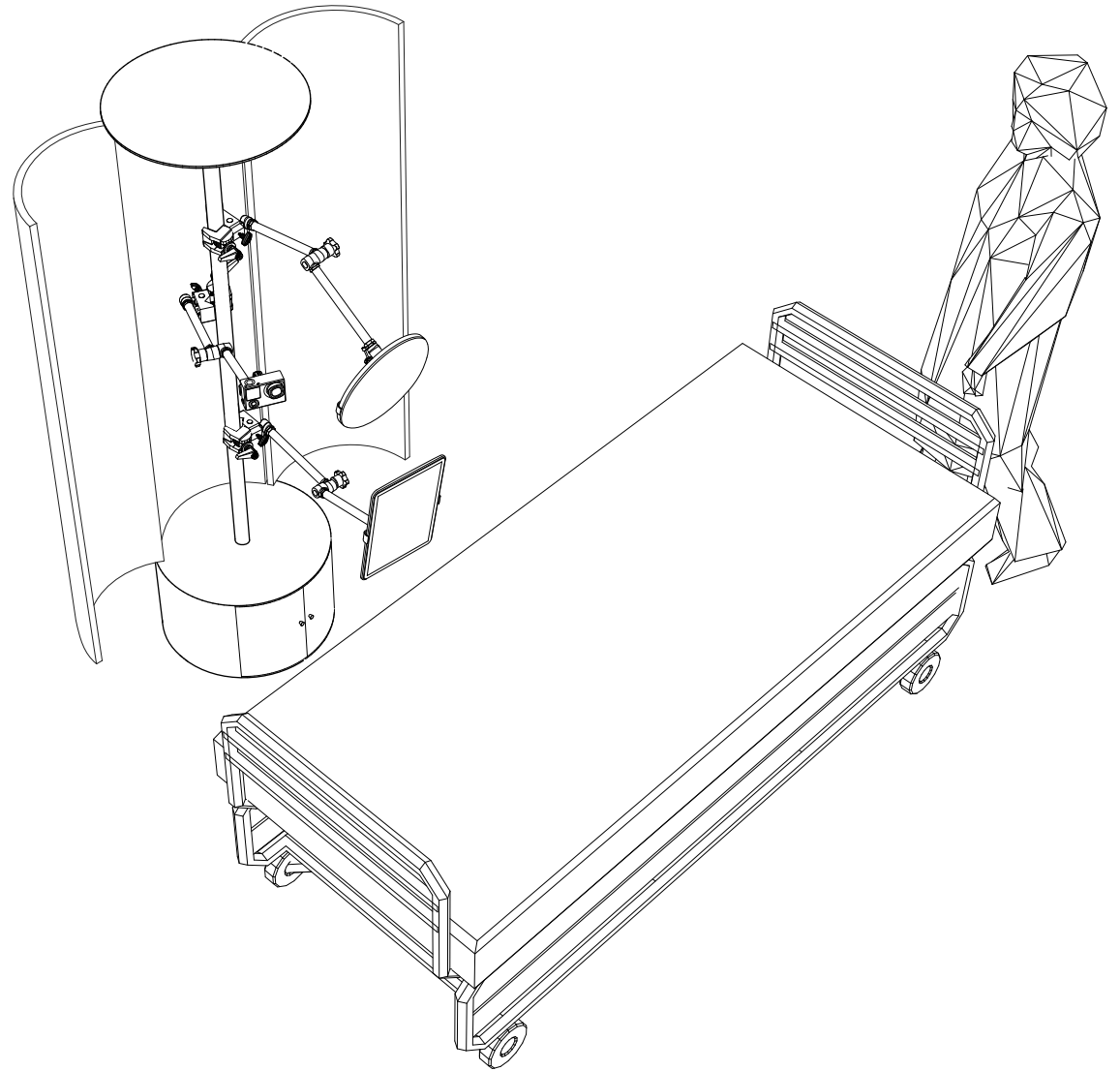


Helios_PRO

SIDE



Helios_PRO



Let's develop it together!

WHAT ABOUT

SCENOGRAPHY + ARCHITECTURE

Paul-Lincke-Ufer 44a

10999 Berlin

WWW.WHATABOUTAGENCY.COM

info@whataboutagency.com