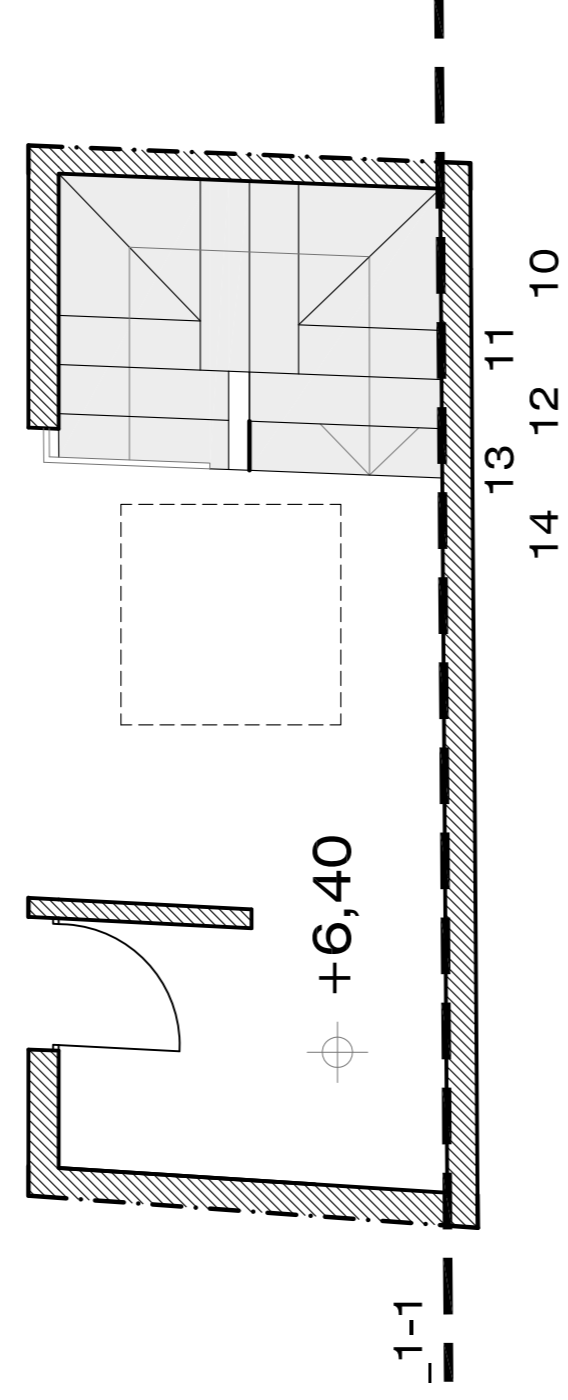
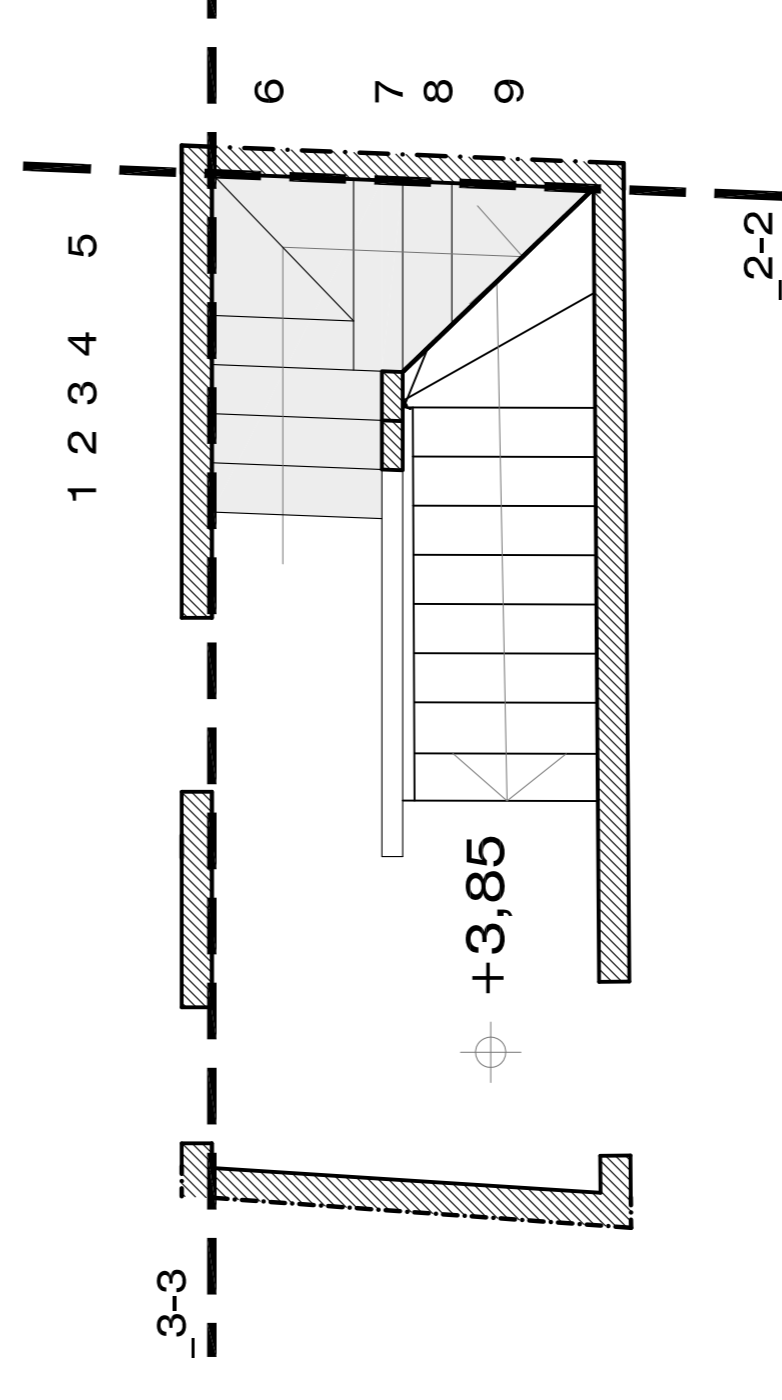


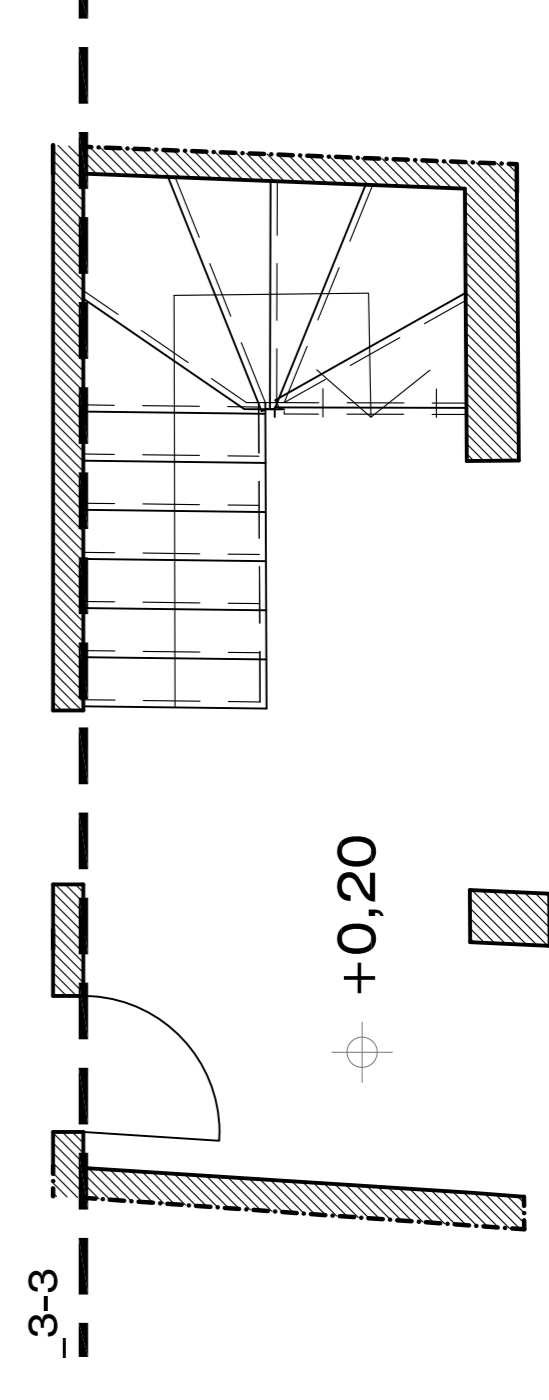
1:100_PLANTS ON THE DIFFERENT LEVELS
WITH NEW STAIR HIGHLIGHTED



DISSECTION LINES DEVELOPMENT SIDE 1-1
PLANTS - ATTIC FLOOR Q. +6.40



SECTION LINES DEVELOPMENT SIDE 2-2
PLANTS - FIRST FLOOR Q. +3.65



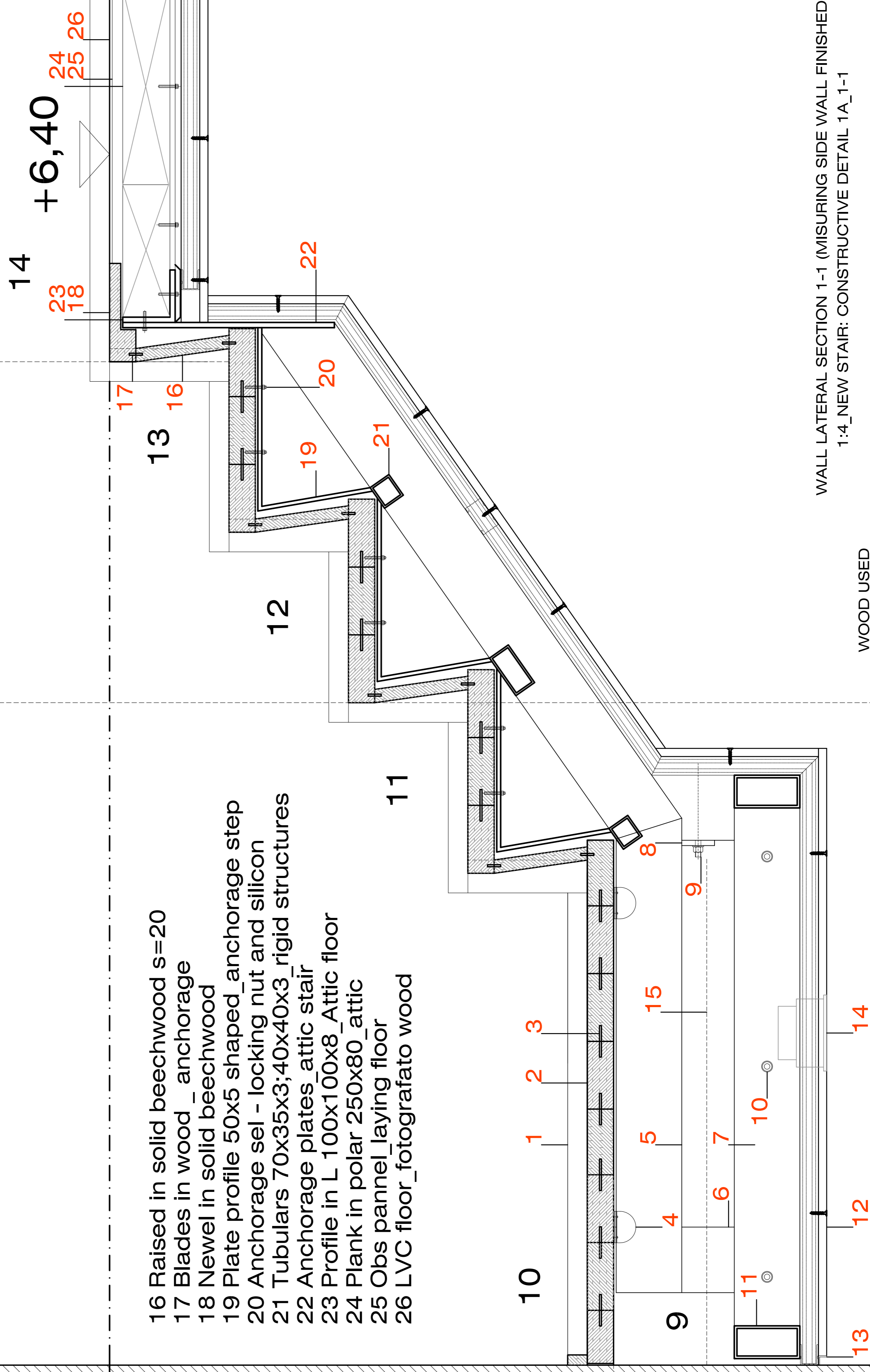
SECTION LINE DEVELOPMENT SIDE 3-3
1:25_PLANTS - GROUND FLOOR Q. +0.20

- 1 Baseboard wood
- 2 Steps mounted in blades_Beechwood
- 3 Junction blades
- 4 Anchorage adjunct with self - locking nut
- 5 Tubular structures 100x50x4
- 6 Tubular shelf 100x100x50
- 7 Iron frame with plate 100x10
- 8 Anchorage plate stair 50x50x8
- 9 Anchorage bolt with self - locking nut
- 10 Anchor bolt_with chemical fixing
- 11 Tubular structures 100x50x4
- 12 Plasterboard sheet_aluminum structure
- 13 Profile in z varnished_escape platerboard/wall
- 14 Plater recessed spotlight Led integrated
- 15 projection corresponding to the ninth step

- 16 Raised in solid beechwood s=20
- 17 Blades in wood_anchorage
- 18 Newel in solid beechwood
- 19 Plate profile 50x5 shaped_anchorage step
- 20 Anchorage sel - locking nut and silicon
- 21 Tubulars 70x35x3;40x40x3_rigid structures
- 22 Anchorage plates_attic stair
- 23 Profile in L 100x100x8_Attic floor
- 24 Plank in polar 250x80_attic
- 25 Obs pannel_laying floor
- 26 LVC floor_fotografato wood

VERNISHED WOOD

Projection parapet element
plasterboard_strengththen
_anchorage handrail



WALL LATERAL SECTION 1-1 (MISURING SIDE WALL FINISHED 153)
1:4_NEW STAIR: CONSTRUCTIVE DETAIL 1A_1-1

WOOD USED
BEECHWOOD COMPOUND REASSEMBLE TEMPERATURE STABILIZATION.