

Flores & Prats Architects + Duch-Pizá

**CASAL BALAGUER
PALMA DE MALLORCA, SPAIN**

Photo: Adrià Goula



Flores & Prats Architects + Duch-Pizá

CASAL BALAGUER
PALMA DE MALLORCA, SPAIN

CONTENTS

1. Press release	3
2. The project	6
3. Data and credits of the project	15
4. Flores & Prats Architects	17
Duch-Pizá	18
5. Images for the press	19
- Early photo shoot by Adrià Goula	19
- New photo shoot by José Hevia (May 2016)	36
- Process models, sketches and drawings	46

PRESS OFFICE

Image MEDIA AGENCY
tel +39 055 4684 187

PRESS OFFICER

Susanne Lambert
susanne.lambert@image-web.org

1

PRESS RELEASE

25 November 2016 (update)

CASAL BALAGUER IN PALMA DE MALLORCA, RENOVATED AND TRANSFORMED
BY FLORES & PRATS ARCHITECTS WITH DUCH-PIZÁ TO HOST A NEW CULTURAL CENTER, IS COMPLETED.

The new Cultural Center Casal Balaguer, designed by Flores & Prats with Duch-Pizá, is completed. The project is a renovation of a historical house in the center of Palma de Mallorca. After a two-decade long process that had architects Ricardo Flores, Eva Prats, Duch Navarro and Xisco Pizá Alabern confront themselves with the physicality of history, a new surprising life has been given to the building.



3

Casal Balaguer is a palace in the historical center of the city, capital of Mallorca, biggest island in the Spanish Balearic archipelago. A large aristocratic house originated in the fourteenth century, renovated in the sixteenth and enlarged in the eighteenth. Late last century, the City Council of Palma decided to turn Casal Balaguer into a cultural center. This project, that Flores & Prats Architects conceived with Duch-Pizá, heralds a new stage of the building, which has now been converted from a family home into a public building open to all the city.

"We work with everything we inherit at once, without granting one period priority over another. Instead we value the whole as a new presence that for us is contemporary and which we approach in order to decipher its rules in order to design its own future. Accepting the accumulation of history in an existing building requires discipline it means accepting the ghost that manifests itself in the building's past as a physical quality imbued in things by time..."
say Ricardo Flores and Eva Prats.

The traces left by time in the various construction phases and in the subsequent uses of the building were the object of a meticulous survey that permitted Flores & Prats + Duch-Pizá to instill new life into this complex by means of a project that is respectful of all pre-existing conditions while at the same time capable of triggering fascinating transformations and possibilities for new uses.

In their restoration project, Flores & Prats Architects and Duch-Pizá took into consideration the need to access areas that were previously closed off, re-activating rooms and designing a circulation through the building to adapt it for its new public use. The new circulation, that allows to hold together structures dating back to different eras, each well identifiable, must be intuitive, making it possible to easily walk through the building despite its complex geometry. In the new program, the ground floor is the entrance to the new Cultural Center, with the reception, cafeteria, and exhibition gallery spread out over two floors. The piano nobile becomes the house museum, and the attic floor, just underneath the roof, is used as the print workshops of Palma's Fine Arts Centre and a lecture room.

The use of light is one of the elements that enabled the most significant transformation: the architects added light and circulation routes. Daylight would guide people through the building, clearly marking their passage from one part of the house to another by changes in lighting and by the different measurements and geometries that they pass through.

As part of this transformation, Flores & Prats + Duch-Pizá's work sought to prevent the palace from losing that spatial complexity and mystery, which has defined its extensions until today.

Twenty years passed since the beginning of the design phase (1996-2002), and a series of events went along this process which underscores a unique competence in the field of architectural restoration and refurbishment. In the course of the years, Flores & Prats gave evidence of this expertise with a series of projects, like the Museum of the Mills (Es Jonquet, Palma de Mallorca, 1998-2002), Providencia House (Badalona, Barcelona, 2002-2008), Sala Beckett - Obrador Internacional de Dramaturgia (Poblenou, Barcelona, started in 2011 and nearing completion). Site visits, lectures, exhibitions, a book ("Thought by Hand", Arquine, 2014): they each stitched the thread for a complex narrative whose protagonist is an architecture that can't be simply bound to a specific time. The project for the Casal Balaguer Cultural Center received several recognitions, among which the FAD Award (Fomento de las Artes Decorativas) in 2016. Casal Balaguer was anticipated as a project in the Catalan pavilion at the 14th Venice Architecture Biennale in 2014 and is presented in the Spanish pavilion at the 15th Venice Architecture Biennale (winner of the Golden Lion).



Photo: Adria Goula

2

THE PROJECT

As described by Flores & Prats Architects

The alleys surrounding the palace are more like chambers: very narrow and stretched out, causing the light to bounce off the walls, channeling it toward the ground. The sensation is that the building is buried, that we are inside a mound of earth and the surface is far up above us. The roofs now become the main level of the construction, an undulating surface that contains periscopes that bring the daylight to the various lower levels, and even to the lower floor.

6



With an aerial view of Palma's historic district, the city looks like a huge, compact and very continuous constructed mass, where the streets are like cuts made by a knife. It is almost as though light can only enter the houses and palaces through the patios, large gaping mouths looking up at the sky. The texture of the patios is far more important than that of the streets, which end up as very thin lines. The Casal Balaguer, located in the center of the historic district, is one such patio, around which many of the house's rooms are arranged.

The rooms of the piano nobile, located around the patio, correspond to the 17th-century part of the house; they have rectangular proportions and are directly interlinked with one another; the circulation leads from room to room. The original 14th-century construction is found to the rear of the house, and has a folded geometry, linked to the city's Moorish past. If the rear part of the house has a Moorish appearance, the front formally coincides with the city's evolution with the urbanization of Calle Unión. These rooms are the extension of the house, and expand out in regular geometric modules, similar to the new blocks in the city.



7

One of the first works at the Casal Balaguer was to appraise the building's "accumulated" history, its various chapters, materialized in adjacent, non-continuous sections. That history originated in the 14th century with the first construction in the rear corner of the current palace, of which there only remains a triangular body (in blue). A later extension in the 16th century created a square tower on the opposite corner, which belonged to a larger construction (in orange).

Finally, in the 18th century, the palace was transformed once again, separating itself from the neighboring construction and securing its own entry onto the current Calle Unión. The extension was carried out over what was formerly the garden, creating a central patio and bringing forward the main façade up to the Calle Unión (in green). The house's oldest constructions were in the rear part as service rooms, and the area of the new patio became the family's space.

The palace's transformations would continue later when, due to certain structural faults caused by an underground torrent in the subsoil beneath the building, the ground floor was compartmentalized with a series of reinforcing walls erected underneath the arches of the porches.

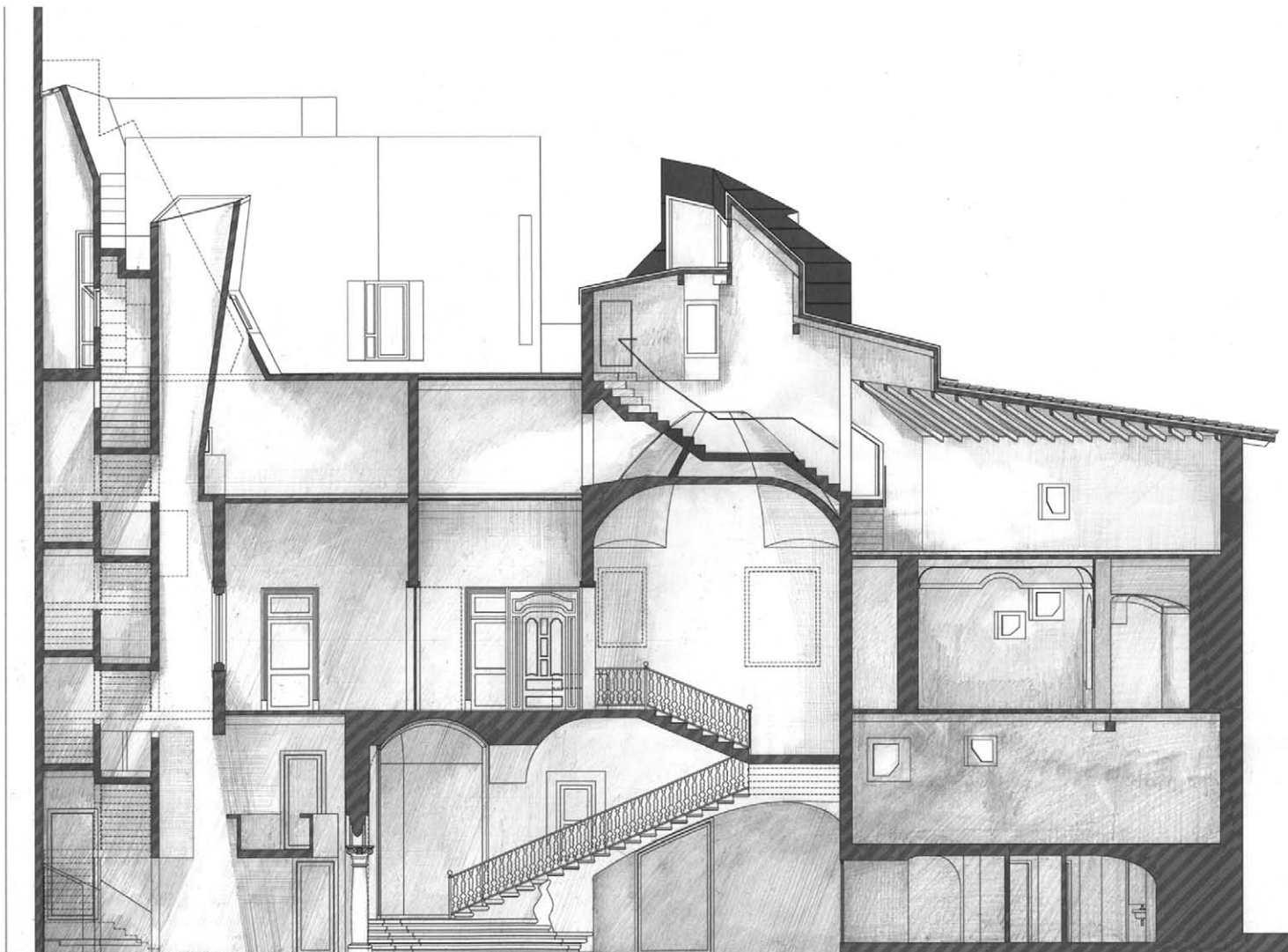
This building's growth in fits and starts over time can be seen in the one we found, especially in the areas in-between the various extensions. Here we can see that the different interventions do not attempt any sort of connection with former epochs,

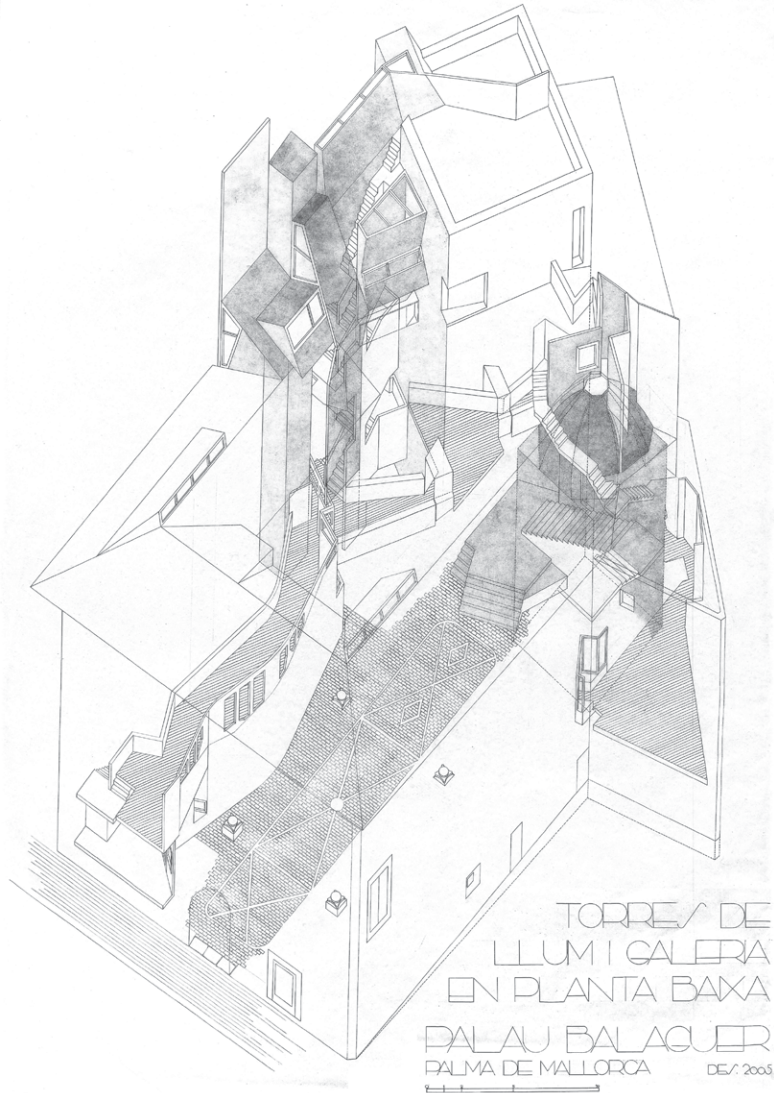
as if the geometry proposed by each era were only intended to meet the family's new needs, ignoring the previous phases. We find abrupt disconnections and discontinuities between the house's different parts, coinciding with these stages of growth.

This project heralds a new stage of the building, which has now been converted from a family home into a public, cultural building. It is now necessary to access areas that were previously closed off, re-activating rooms and designing a circulation through the building to adapt it for its new public use. The new circulation must be intuitive, making it possible to easily walk through the building despite its complex geometry as a result of the building's long evolution.

We added light and circulation routes. Daylight would guide people through the building, clearly marking their passage from one part of the house to another by changes in lighting and by the different measurements and geometries that they pass through. As part of this transformation, our work sought to prevent the palace losing that spatial complexity and mystery, of light and depth, of chambers that contain time, which has defined its extensions until today.

In the new program, the ground floor is the entrance to the new cultural center, with the reception, cafeteria, and exhibition gallery spread out over two floors. The change to this level involved reopening the arches that had been closed in the last





century, in order to recover the patio's original, continuous space, with the complete vision of the thirteen arches that seem to hold up the house in mid-air.

The piano nobile becomes the house museum, which can be visited on a route through the rooms that used to be part of Josep Balaguer's former music building. The 'Porxos' floor, just underneath the roof, is used as the documentation center for the Espai de les Arts Foundation and the Círculo de Bellas Artes center. The 'Roof' floor recovers an open-air terrace, and a room for book presentations related to the new center.

In the section view, two types of sunlight can be seen to direct the new circulations through the palace. The light falls vertically like rain against the partition wall, filling up the spaces that it finds on its route to the ground, whereas above the dome, the light is horizontal. Before reaching the

oculus, it floats above the dome, and is distributed in the different rooms around it. Although the project ultimately alters the entire building, there are moments of greater intensity at the intersections of the building's different phases, and these are the ones that are outlined in the axonometry.

The mezzanine is set back from the partition wall and brought close to the arches and capitals. From this level you can see the exhibition gallery from one side, and the patio from the other. The concrete attic dodges the arches and becomes a staircase at the end of the route. The light in the attic of the exhibition gallery enters indirectly, reflected from the patio: it hits the floor and enters the gallery travelling upward, lighting the former palace's coffered ceiling. The light openings are masks that make it possible to look down, to the patio or to the arches, without being seen.

The rhythm of shadow-light-shadow that accompanies the entrance through the patio changes dimension when reaching the main staircase. The view is upward and we see light through the oculus, but we do not see where it enters. In parallel to the slow climb up the main stairs, the service staircase rises quickly, with its own

light that comes from the extrados of the dome. On both sides of the wall, two circulations move at different speeds: one is folded and splintered, fragmenting the light that falls with it; the other is slow and follows the edges of the space, allowing the light to inflate the entire chamber that contains it.



The 18th-century extensions became the most important place for the family, while the 14th-century house became used for the service rooms. The two areas have very distinct geometries and sizes, on different levels, and are interconnected through small doors and stairs. (...) We worked between these different periods on the house's growth, connecting them to the new interventions for them all to work as a new unit. In that way, the several,

different-sized windows —part of the former service rooms, kitchens, bathrooms, storage areas— are now connected to recessed reliefs which make them larger units, to produce generously-sized windows that can match the scale of a single room, the new cultural center's art storeroom.

This ceiling used to have a flexible geometry: the tiles rested on bars that used to be shifted to suit a variable geometrical arrangement both in plan and section, creating warped planes. By reconstructing this ceiling with a completely level insulating panel, the geometry changed from the flexibility of the warped surfaces to level ones, and every corner, every joint and every rotation had to be studied one by one to find a custom solution.



The new wooden beams replaced the old roof trusses, crossing the entire space without intermediate columns. Of the original trusses dating back to 1700, the only reusable portions were the molded ends that jutted out over the street, made with the highest quality wood, which best withstood the ravages of time. Therefore, the new beams are attached to these cantilevered sections using the original joints. The appearance of light is associated to the increased volume, the pockets of light attached to the roof, between the wooden trusses, as lamps that intermittently illuminate the floor.

11



This floor houses the library, and it is just below the roofs, and indirect lighting constantly flows through the skylights. Therefore the sky is not directly visible, and the space revolves around two lit up centers: the square patio and the circular dome. These two concentrations of light create a compass, orienting and appearing intermittently across the floor.

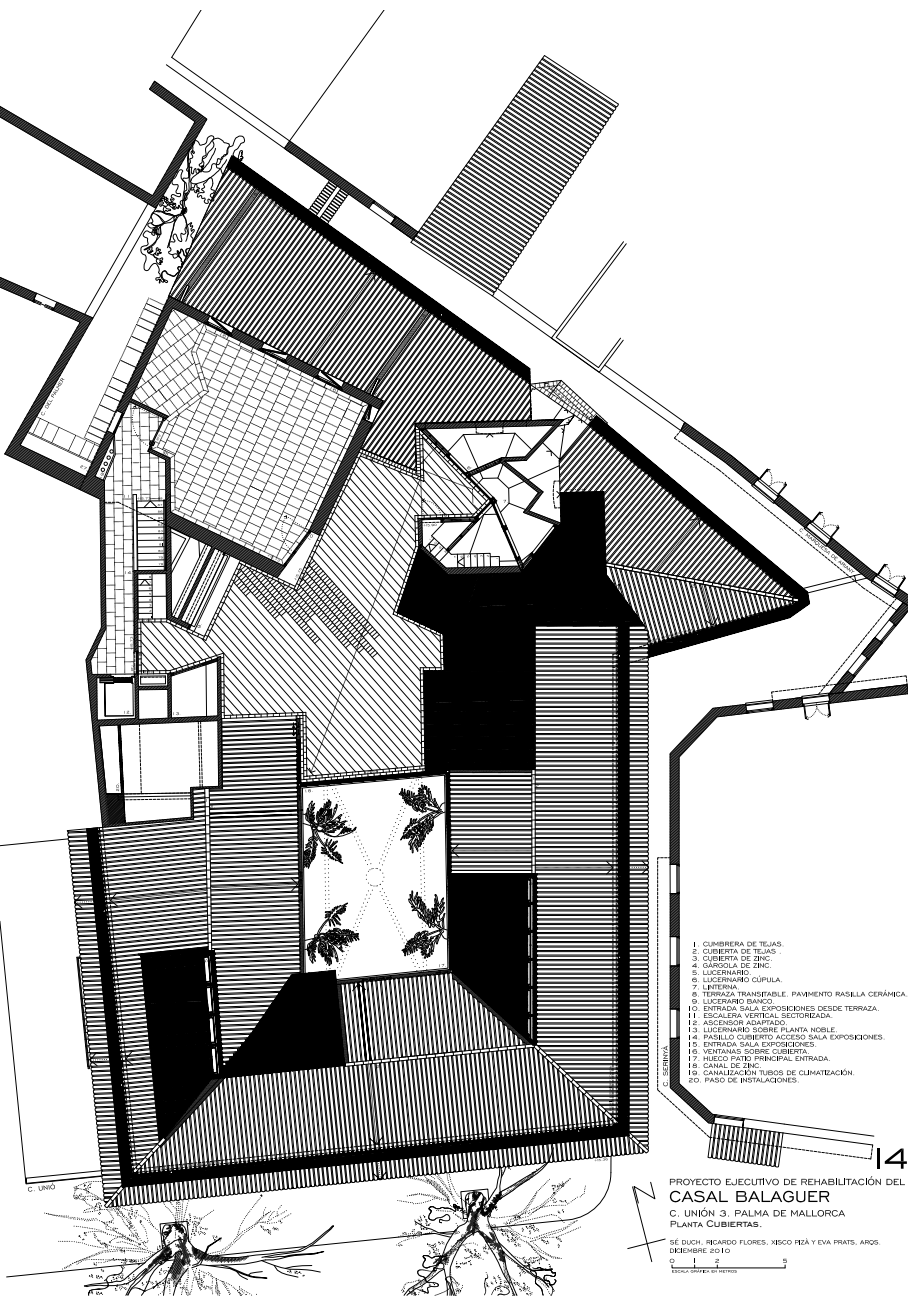
On the outer side, part of the dome remains visible and exposed to the elements, showing the city a fragment of one of the palace's most unique interior aspects.

A small, triangular room built over the building's oldest corner had been disconnected, forgotten and abandoned. Accepting the change in level compared to the rest of the floor, the project brings it back into contact with the building. In order to do so, an entrance is provided through the extrados of the dome, with a new window going around the old elliptical window, and a skylight that provides direct lighting for the glass panes of this ellipse.

The renovation project leaves the hidden part of the dome exposed —an area that was previously neither seen nor visited. The stairs connecting the various levels and that lead to the roof terrace pass above it, through a weightless space. Now the dome is a place that can be explored, and walked along in the light, in the same horizontal movement as the dome itself, through these spaces that contrast it against the weight of the vault. The light slips down the concave surface and spreads out toward the surrounding rooms; it then enters through the oculus and falls softly, floating over the main staircase. (...)

The roof around the patio used not to connect to the dome. The building's roof was previously an unstable and emergency construction, with a geometry that failed to channel the water to the outer perimeter, leaving it trapped at different points and thus damaging the palace's interior.

It was interesting to draw and build a roof that could provide continuity between the patio, the dome and the tower, blurring hierarchies and surroundings, as if a garden, a new open-air space that the building had now acquired: a horizontal terrace for people to gather after inaugurations in the tower's gallery.



The shapes of the two cities are reflected in the new roofs. The large patio represents the 18th-century ensanche, and the compressed and compacted part of the city, with its Moorish street layout, can be seen in the rear. The new roof combines these two scales and joins them together, so that the eye jumps from this roof to the neighboring one in a single movement, forming part of a texture in which no clear distinction exists between where one starts and the other ends.

The series of light wells appearing in the palace's contact with the sky evoke that status of the submerged building, which in this plan becomes the building's true façade —its main level. An important program of activities is created in the roof spaces —the building's final destination, hence this plan becomes almost more representative than the façade overlooking the street.

An initial terrace, surrounded by large skylights, form an initial open-air stage, protecting whoever climbs up there. A second, higher terrace is above the square tower, and to climb up there you pass between two of the skylights of the partition wall. This place acts as a turret, at the same height as the other miradors of Palma's historic district.



Photo: Adria Goula



Photo: Adria Goula

3

DATA AND CREDITS

of the project

Project name

Casal Balaguer

Project location

Calle Unión 3, Palma de Mallorca, Spain

Client

Municipality of Palma de Mallorca

Architect

15

Flores & Prats (www.floresprats.com) + Duch-Pizá (www.duchpiza.com)

Collaborators

Caterina Anastasia, Ankur Jain, Els van Meerbeek, Cristian Zaroni, Carlos Bedoya, Guido Fiszson, Ellen Halupczok, Julia Taubinguer, Paula Ávila, Nicolás Chara, Eugenia Troncoso, Israel Hernando, Hernán Barbalace, Benedikte Mikkelsen, Mar Garrido, Celia Carroll, Jorge Casajús, Juan Membrive, Oriol Valls, Tanja Dietsch, Sergi Madrid, Sergio Muiños, Lucas Wilson, Anna Reidy, Maria Amat Busquets, Fabrizia Cortellini, Veronica Baroni, Elvire Thouvenot, Carlotta Bonura, Francesca Tassi-Carboni

Archaeological survey

Grupo Arqueotaller (Roser Pérez, Margalida Munar, Magdalena Salas)

Historical research

Dolores Ladaria

Material analysis

Lend Consulting

Structural engineering

Fernando Purroy

Supplies engineering

Joan Perelló

Contractor

Contratas Bartolomé Ramón SA / phase 1 and phase 2

Cyrespa / phase 3

Project data

Total floor area: 2,500 square meters

Budget: 6.100.000 Euros

Schedule

First project: 1996

Second project: 2001-2002

Construction / phase 1: April 2009 - June 2010

Construction / phase 2: March 2011 - March 2013

Construction / phase 3: May 2014 - May 2016

16

Photographers

Adrià Goula

José Hevia

Hisao Suzuki (model photos)

Press office

Image MEDIA AGENCY

www.image-web.org

4

FLORES & PRATS ARCHITECTS

Flores & Prats is an architecture office from Barcelona, dedicated to confront theory and academic practice with design and construction activity.

After their experience at Enric Miralles' office, Ricardo Flores and Eva Prats have developed a career where research has been always linked to the responsibility to make and to build.

The office has worked on rehabilitation of old structures for new occupations, as well as on neighbours' participation in the design process of urban public spaces, and on social housing and its capacity to create community. But they have also experienced using film to document architecture, or with menus of edible architecture for their exhibitions in Barcelona and Copenhagen as a way to bring their work closer to a broader public.

The work of Flores & Prats is widely awarded, published and exhibited. They have been part of the Wallpaper Directory of Emerging Offices in 2007,

obtained the Grand Award for the Best Work in Architecture at the Royal Academy of Arts in London 2009 for the rehabilitation project Mills Museum in Palma de Mallorca and the International Award Dedalo Minosse of Vicenza 2011 for the New Campus for Microsoft in Milan. Their work on the rehabilitation of the Cultural Centre Casal Balaguer, exhibited at the Biennale di Architettura di Venezia in 2014 and in 2016, was nominated for the Mies van der Rohe Award 2015 and received the FAD Award (Fomento de las Artes Decorativas) in 2016.

Currently they are engaged with the construction of Sala Beckett - Obrador Internacional de Dramaturgia (Poblenou, Barcelona), a project they started in 2011 and nearing completion.

Ricardo and Eva are both professors at the School of Architecture of Barcelona, and have been invited professors to several universities around the world.

www.floresprats.com

DUCH-PIZÁ

Sé Duch Navarro (born in Barcelona in 1960) and Xisco Pizá Alabern (born in Palma in 1958) share their studio since 1995, although as students they had already worked together and learned the craft in the offices of Enric Miralles and Carme Pinós and of J.A. Martínez Lapena & Elias Torres Architects, from whom they still learn.

Sé Duch founded the jewelry firm Duch Claramunt CHCL with Xavi Claramunt. The current office of Duch-Pizá occupies the spaces of an old newspaper, at 17 Sant Feliu Street in the Old Town of Palma. This allows the architecture team to share space, work and good times with other professionals, forming together an open structure, always ready

to respond to new circumstances. They have extensive experience in public and private works and they often collaborate with architecture firms of international prestige.

Duch-Pizá were finalists in the Architecture Prize of Canaries in 2005, and were finalists several times in the Mallorca Architectural Awards organized by COAIB - Col·legi Oficial d'Arquitectes Illes Balears.

Their work was included in the book "ARQCAT, volume 3" by Jordi Ludevid and in "The New Spanish Architecture" by Anatxu Zabalbeascoa.

www.duchpiza.com

5

IMAGES FOR THE PRESS

The following images, available for press purposes at this page <http://goo.gl/6HbuQs>, are protected by copyright. If you do not have the credentials (username and password) to download the images, please send an email to press@image-web.org indicating: name and last name, email address, country, name of magazine or webzine to receive them.

All images marked with a star in the upper right-hand corner are destined to paper publications only.

Early photo shoot by Adrià Goula.



57300-PH_003

Caption: Flores & Prats Architects + Duch-Pizá. Casal Balaguer Cultural Center in Palma de Mallorca, Spain. Calle Unión. Photo: Adrià Goula.

Size: 20,9 MB - 5792px × 8688px
(format JPG)

Please note: This image is available for paper publications only.



57300-PH_008

Caption: Flores & Prats Architects + Duch-Pizá. Casal Balaguer Cultural Center in Palma de Mallorca, Spain. Photo: Adrià Goula.

Size: 24,8 MB - 11860px × 5775px (format JPG)

Please note: This image is available for paper publications only.

57300-PH_008B

Caption: Flores & Prats Architects + Duch-Pizá. Casal Balaguer Cultural Center in Palma de Mallorca, Spain. Photo: Adrià Goula.

Size: 2,3 MB - 8688px × 4344px (format JPG)

Please note: This image is available for paper publications only.





57300-PH_009

Caption: Flores & Prats Architects + Duch-Pizá. Casal Balaguer Cultural Center in Palma de Mallorca, Spain. Photo: Adrià Goula.

Size: 22,8 MB - 11348px × 5763px (format JPG)

Please note: This image is available for paper publications only.



57300-PH_010

Caption: Flores & Prats Architects + Duch-Pizá. Casal Balaguer Cultural Center in Palma de Mallorca, Spain. Photo: Adrià Goula.

Size: 10,8 MB - 5792px × 8688px (format JPG)

Please note: This image is available for paper publications only.

57300-PH_011

Caption: Flores & Prats Architects + Duch-Pizá. Casal Balaguer Cultural Center in Palma de Mallorca, Spain. Photo: Adrià Goula.

Size: 20,1 MB - 5792px × 8688px (format JPG)

Please note: This image is available for paper publications only.



57300-PH_012

Caption: Flores & Prats Architects + Duch-Pizá. Casal Balaguer Cultural Center in Palma de Mallorca, Spain. Photo: Adrià Goula.

Size: 33,2 MB - 12710px × 5762px (format JPG)

Please note: This image is available for paper publications only.





57300-PH_018

Caption: Flores & Prats Architects + Duch-Pizá. Casal Balaguer Cultural Center in Palma de Mallorca, Spain. Photo: Adrià Goula.

Size: 5,2 MB - 8688px × 4344px (format JPG)

Please note: This image is available for both paper and online publications.



57300-PH_017

Caption: Flores & Prats Architects + Duch-Pizá. Casal Balaguer Cultural Center in Palma de Mallorca, Spain. Photo: Adrià Goula.

Size: 16,7 MB - 5792px × 8688px (format JPG)

Please note: This image is available for both paper and online publications.



57300-PH_014

Caption: Flores & Prats Architects + Duch-Pizá. Casal Balaguer Cultural Center in Palma de Mallorca, Spain. Exhibitions mezzanine. Photo: Adrià Goula.

Size: 22,6 MB - 5792px × 8688px (format JPG)

Please note: This image is available for paper publications only.



57300-PH_016

Caption: Flores & Prats Architects + Duch-Pizá. Casal Balaguer Cultural Center in Palma de Mallorca, Spain. Photo: Adrià Goula.

Size: 21,3 MB - 5792px × 8688px (format JPG)

Please note: This image is available for both paper and online publications.



57300-PH_036

Caption: Flores & Prats Architects + Duch-Pizá. Casal Balaguer Cultural Center in Palma de Mallorca, Spain. Long window at gallery space on the ground floor. Photo: Adrià Goula.

Size: 19,8 MB - 8688px × 4344px (format JPG)

Please note: This image is available for paper publications only.



57300-PH_028

Caption: Flores & Prats Architects + Duch-Pizá. Casal Balaguer Cultural Center in Palma de Mallorca, Spain. New wooden roof, with entrance of natural light to illuminate the library. Photo: Adrià Goula.

Size: 7,8 MB - 3508px × 2480px
(format JPG)

Please note: This image is available for both paper and online publications.

57300-PH_029

Caption: Flores & Prats Architects + Duch-Pizá. Casal Balaguer Cultural Center in Palma de Mallorca, Spain. Wooden trusses covering the new library. Photo: Adrià Goula.

Size: 7,4 MB - 3720px × 2480px (format JPG)

Please note: This image is available for both paper and online publications.



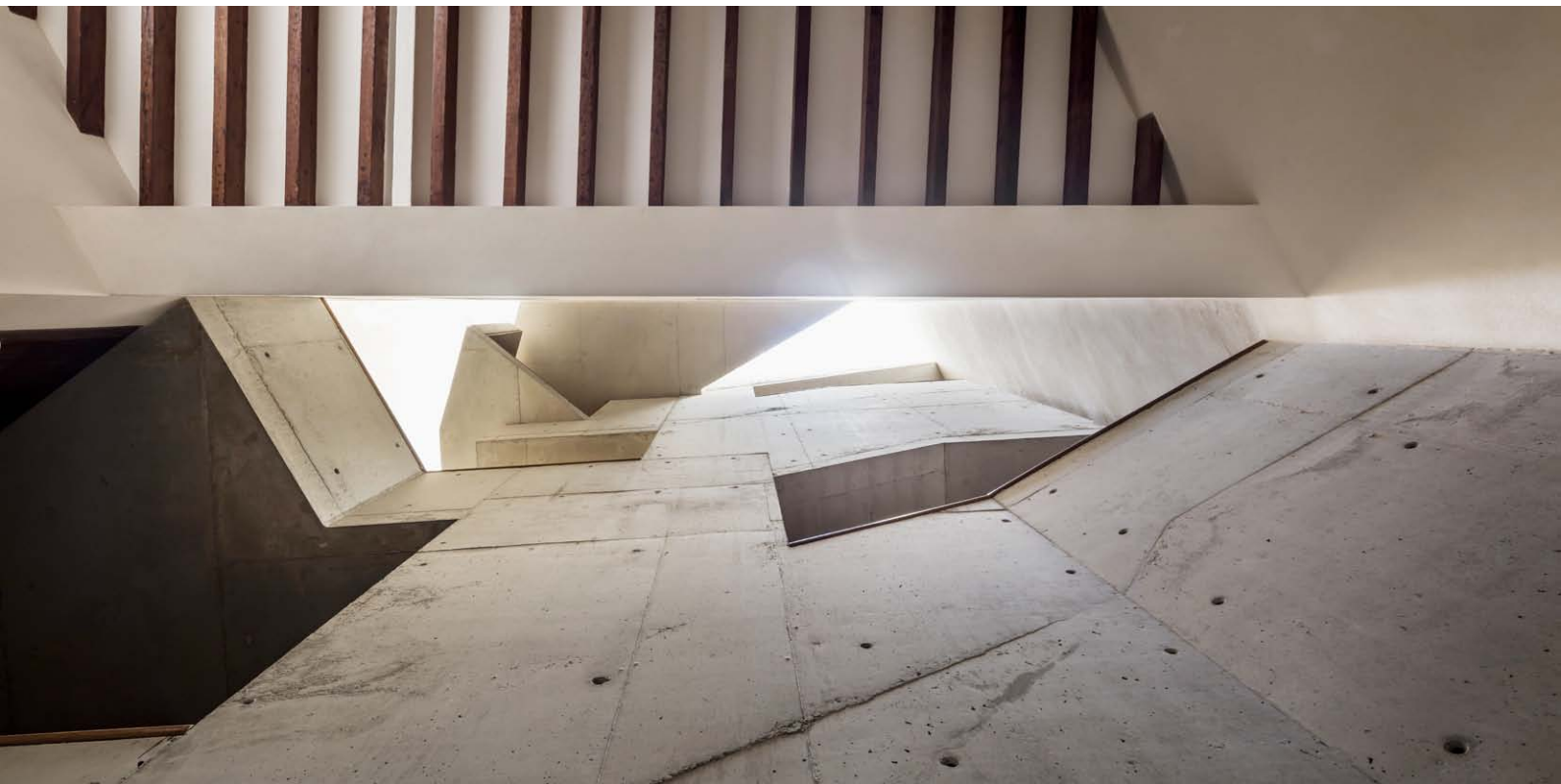


57300-PH_020

Caption: Flores & Prats
Architects + Duch-Pizá.
Casal Balaguer Cultural
Center in Palma de
Mallorca, Spain. Photo:
Adrià Goula.

Size: 23 MB -
5792px × 10776px (format
JPG)

**Please note: This image
is available for paper
publications only.**



57300-PH_025

Caption: Flores & Prats Architects + Duch-Pizá. Casal Balaguer Cultural Center in Palma de Mallorca, Spain. Photo: Adrià Goula.

Size: 17 MB - 8688px × 4344px (format JPG)

Please note: This image is available for both paper and online publications.

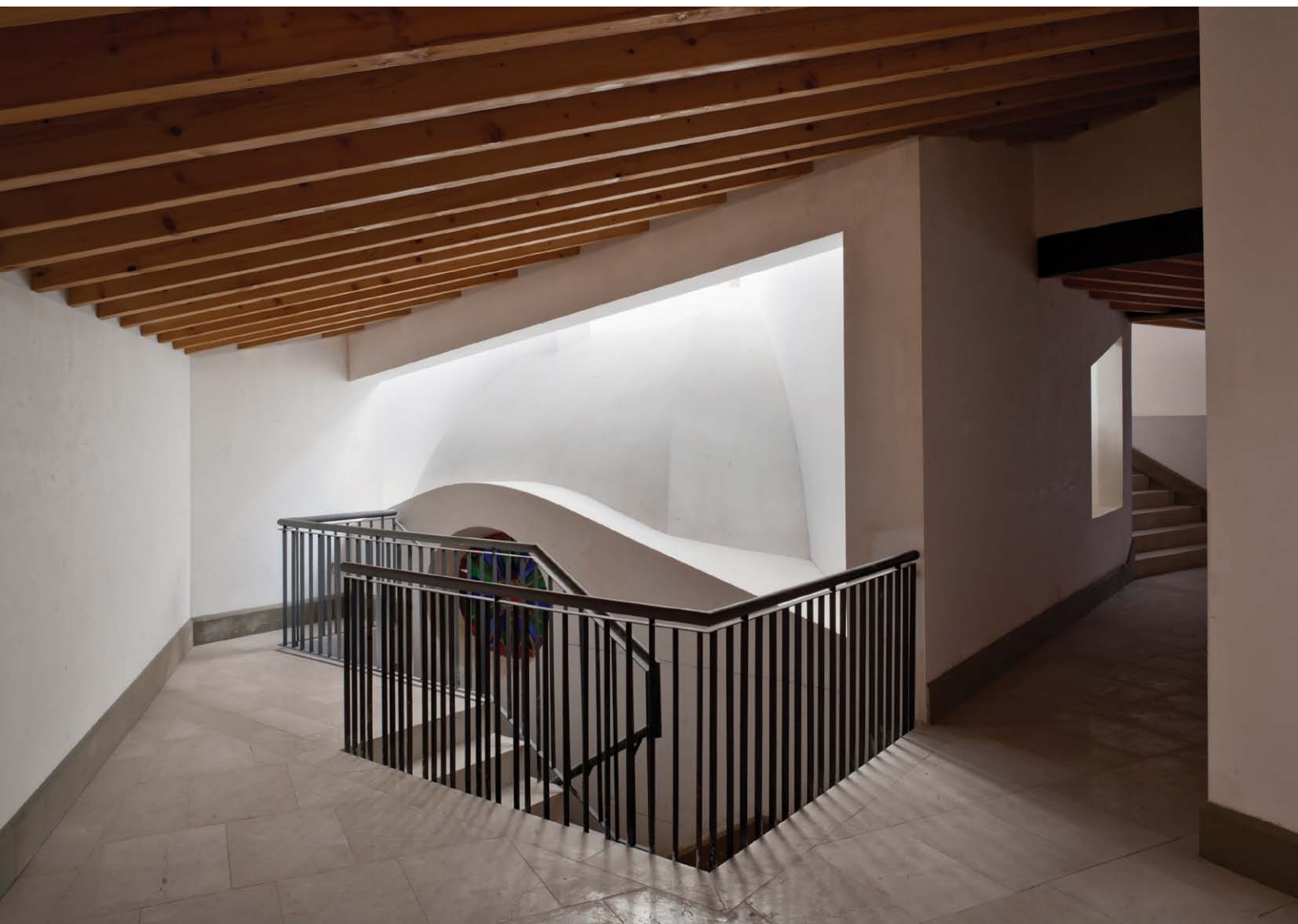


57300-PH_022

Caption: Flores & Prats Architects +
Duch-Pizá. Casal Balaguer Cultural
Center in Palma de Mallorca, Spain.
Photo: Adrià Goula.

Size: 9,5 MB - 5792px × 11848px (format
JPG)

**Please note: This image is available for
paper publications only.**



57300-PH_030

Caption: Flores & Prats Architects + Duch-Pizá. Casal Balaguer Cultural Center in Palma de Mallorca, Spain. Dome above the main staircase seen from the new library. Photo: Adrià Goula.

Size: 6,9 MB - 3508px × 2480px (format JPG)

Please note: This image is available for both paper and online publications.



57300-PH_034

Caption: Flores & Prats Architects + Duch-Pizá. Casal Balaguer Cultural Center in Palma de Mallorca, Spain. Chambers of light and shadow above the dome. Photo: Adrià Goula.

Size: 6,5 MB - 2480px × 3508px (format JPG)

Please note: This image is available for both paper and online publications.



57300-PH_035

Caption: Flores & Prats Architects + Duch-Pizá. Casal Balaguer Cultural Center in Palma de Mallorca, Spain. Mouth of the dome. Photo: Adrià Goula.

Size: 4,7 MB - 2480px × 3720px (format JPG)

Please note: This image is available for both paper and online publications.

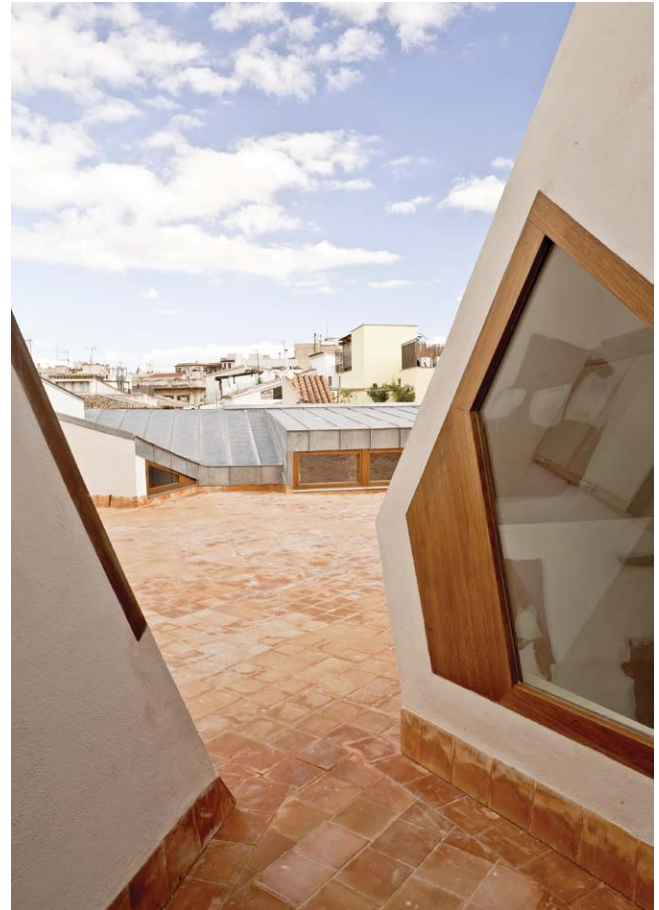


57300-PH_004

Caption: Flores & Prats Architects + Duch-Pizá. Casal Balaguer Cultural Center in Palma de Mallorca, Spain. Terrace to the South. Photo: Adrià Goula.

Size: 8,6 MB - 2480px × 3572px (format JPG)

Please note: This image is available for both paper and online publications.



57300-PH_005

Caption: Flores & Prats Architects + Duch-Pizá. Casal Balaguer Cultural Center in Palma de Mallorca, Spain. Terrace access among volumes of lightwells. Photo: Adrià Goula.

Size: 7,6 MB - 2480px × 3508px (format JPG)

Please note: This image is available for both paper and online publications.



57300-PH_002

Caption: Flores & Prats Architects + Duch-Pizá. Casal Balaguer Cultural Center in Palma de Mallorca, Spain. Roofscape and old town. Photo: Adrià Goula.

Size: 12 MB - 4992px × 3328px (format JPG)

Please note: This image is available for both paper and online publications.



57300-PH_007

Caption: Flores & Prats Architects + Duch-Pizà. Casal Balaguer Cultural Center in Palma de Mallorca, Spain. Upper terrace surrounded by lightwells. Photo: Adrià Goula.

Size: 6,9 MB - 3508px × 2480px (format JPG)

Please note: This image is available for both paper and online publications.



57300-PH_006

Caption: Flores & Prats Architects + Duch-Pizà. Casal Balaguer Cultural Center in Palma de Mallorca, Spain. Lightwells and lecture room towards the terrace. Photo: Adrià Goula.

Size: 5,1 MB - 2480px × 3720px (format JPG)

Please note: This image is available for both paper and online publications.



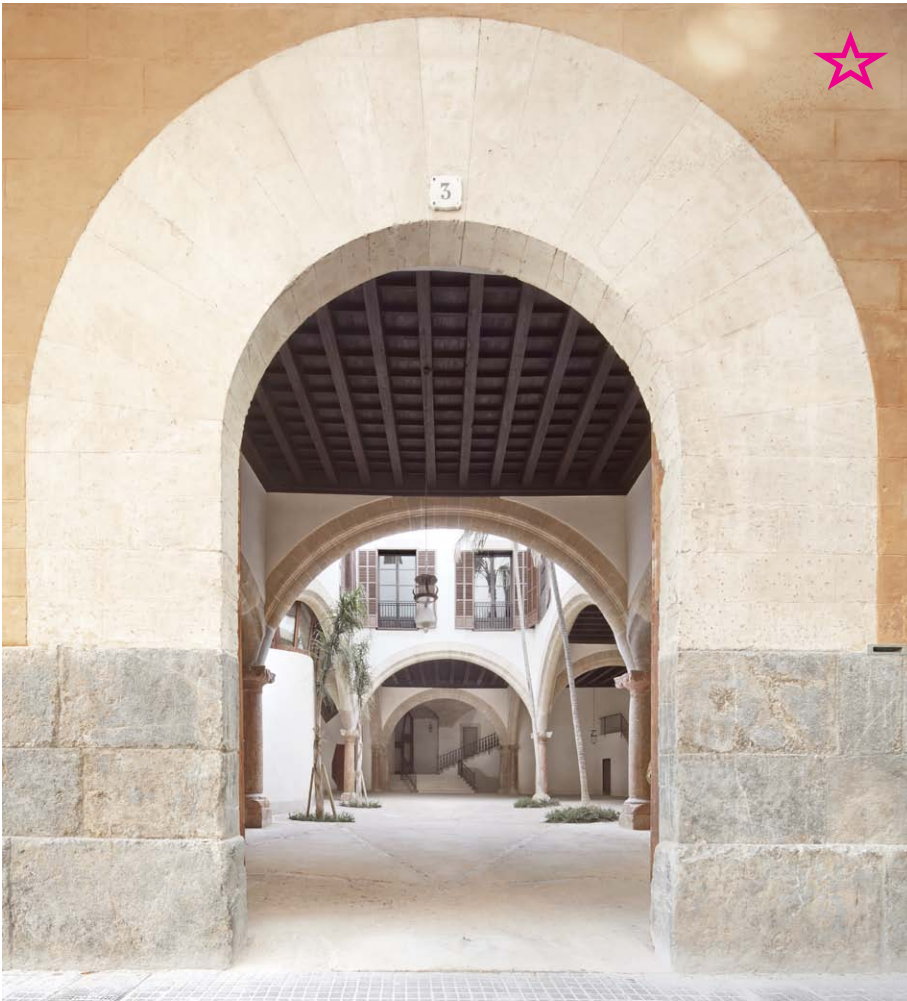
57300-PH_001

Caption: Flores & Prats Architects + Duch-Pizá. Casal Balguer Cultural Center in Palma de Mallorca, Spain. General view. New and old roofs.
Photo: Adrià Goula.

Size: 8,4 MB - 3508px × 2480px (format JPG)

Please note: This image is available for both paper and online publications.

New photo shoot by José Hevia (May 2016).



57300-PH_0001JH

Caption: Flores & Prats Architects + Duch-Pizá. Casal Balaguer Cultural Center in Palma de Mallorca, Spain. The entrance at street level. Photo: José Hevia.

Size: 33 MB - 6491px × 7087px (format JPG)

Please note: This image is available for paper publications only.

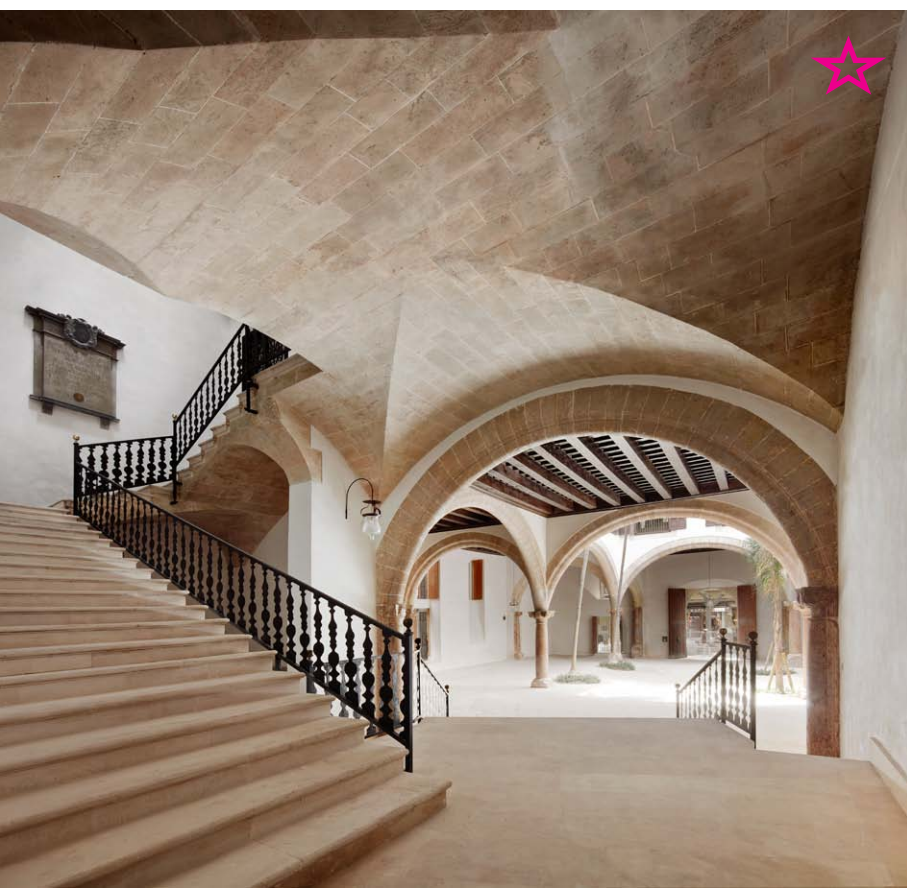


57300-PH_0005JH

Caption: Flores & Prats Architects + Duch-Pizá. Casal Balaguer Cultural Center in Palma de Mallorca, Spain. Photo: José Hevia.

Size: 19,6 MB - 7087px × 3957px (format JPG)

Please note: This image is available for paper publications only.



57300-PH_0006JH

Caption: Flores & Prats Architects + Duch-Pizá. Casal Balaguer Cultural Center in Palma de Mallorca, Spain. Photo: José Hevia.

Size: 34,6 MB - 7087px × 6814px (format JPG)

Please note: This image is available for paper publications only.



57300-PH_0008JH

Caption: Flores & Prats
Architects + Duch-Pizá.
Casal Balaguer Cultural
Center in Palma de
Mallorca, Spain. Photo:
José Hevia.

Size: 17,7 MB -
4689px × 7087px (format
JPG)

**Please note: This image
is available for paper
publications only.**



57300-PH_0011JH

Caption: Flores & Prats Architects + Duch-Pizá. Casal Balaguer Cultural Center in Palma de Mallorca, Spain. Photo: José Hevia.

Size: 13,8 MB - 4823px × 7087px (format JPG)

Please note: This image is available for paper publications only.



57300-PH_0012JH

Caption: Flores & Prats Architects + Duch-Pizá. Casal Balaguer Cultural Center in Palma de Mallorca, Spain. Photo: José Hevia.

Size: 18,6 MB - 4725px × 7087px (format JPG)

Please note: This image is available for paper publications only.



57300-PH_0034JH

Caption: Flores & Prats Architects + Duch-Pizá. Casal Balaguer Cultural Center in Palma de Mallorca, Spain. Photo: José Hevia.

Size: 14,6 MB - 7087px × 4312px (format JPG)

Please note: This image is available for paper publications only.



57300-PH_0030JH

Caption: Flores & Prats Architects + Duch-Pizá. Casal Balaguer Cultural Center in Palma de Mallorca, Spain. Photo: José Hevia.

Size: 19,9 MB - 4725px × 7087px (format JPG)

Please note: This image is available for paper publications only.



57300-PH_0037JH

Caption: Flores & Prats Architects + Duch-Pizá. Casal Balaguer Cultural Center in Palma de Mallorca, Spain. Photo: José Hevia.

Size: 22,5 MB - 5447px × 7087px (format JPG)

Please note: This image is available for paper publications only.



57300-PH_0040JH

Caption: Flores & Prats Architects + Duch-Pizá. Casal Balaguer Cultural Center in Palma de Mallorca, Spain. Photo: José Hevia.

Size: 19 MB - 4725px × 7087px (format JPG)

Please note: This image is available for paper publications only.



57300-PH_0044JH

Caption: Flores & Prats Architects +
Duch-Pizá. Casal Balaguer Cultural
Center in Palma de Mallorca, Spain.
Photo: José Hevia.

Size: 20,4 MB - 7087px × 7191px (format
JPG)

**Please note: This image is available for
paper publications only.**



57300-PH_0048JH

Caption: Flores & Prats Architects +
Duch-Pizá. Casal Balaguer Cultural
Center in Palma de Mallorca, Spain.
Photo: José Hevia.

Size: 10,7 MB - 4071px × 7087px (format
JPG)

**Please note: This image is available for
paper publications only.**



57300-PH_0050JH

Caption: Flores & Prats
Architects + Duch-Pizá.
Casal Balaguer Cultural
Center in Palma de
Mallorca, Spain. Photo:
José Hevia.

Size: 13,9 MB -
4724px × 7087px (format
JPG)

**Please note: This image
is available for paper
publications only.**



57300-PH_0051JH

Caption: Flores & Prats Architects + Duch-Pizá. Casal Balaguer Cultural Center in Palma de Mallorca, Spain. Photo: José Hevia.

Size: 22,8 MB - 7087px × 4725px (format JPG)

Please note: This image is available for paper publications only.



57300-PH_0054JH

Caption: Flores & Prats Architects + Duch-Pizá. Casal Balaguer Cultural Center in Palma de Mallorca, Spain. Photo: José Hevia.

Size: 14,7 MB - 7087px × 4725px (format JPG)

Please note: This image is available for paper publications only.



57300-PH_0058JH

Caption: Flores & Prats Architects + Duch-Pizá. Casal Balaguer Cultural Center in Palma de Mallorca, Spain. Photo: José Hevia.

Size: 26 MB - 4725px × 7087px (format JPG)

Please note: This image is available for paper publications only.

Process models, sketches and drawings.



57300-MOD_001

Caption: Flores & Prats Architects + Duch-Pizá. Casal Balaguer Cultural Center in Palma de Mallorca, Spain. Model of the complete building. Photo: Hisao Suzuki.

Size: 1,2 MB - 2323px × 1779px (format JPG)

This image is available for both paper and online publications.

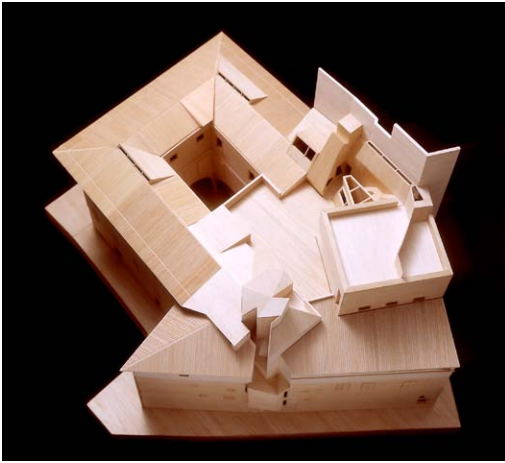


57300-MOD_002

Caption: Flores & Prats Architects + Duch-Pizá. Casal Balaguer Cultural Center in Palma de Mallorca, Spain. Model of the new roof with skylights. Photo: Hisao Suzuki.

Size: 4,2 MB - 2709px × 2131px (format JPG)

This image is available for both paper and online publications.

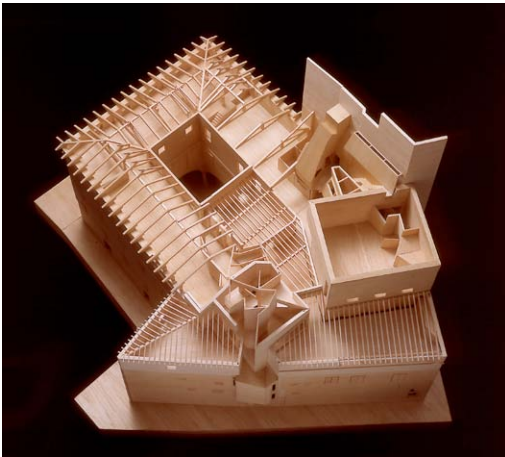


57300-MOD_003

Caption: Flores & Prats Architects + Duch-Pizá. Casal Balaguer Cultural Center in Palma de Mallorca, Spain. Model of the new roof. Photo: Hisao Suzuki.

Size: 2,8 MB - 2494px × 2252px (format JPG)

This image is available for both paper and online publications.



57300-MOD_004

Caption: Flores & Prats Architects + Duch-Pizá. Casal Balaguer Cultural Center in Palma de Mallorca, Spain. Model of the second floor. Library and reading rooms under the roof. Photo: Hisao Suzuki.

Size: 2,9 MB - 2408px × 2149px (format JPG)

This image is available for both paper and online publications.



57300-MOD_005

Caption: Flores & Prats Architects + Duch-Pizá. Casal Balaguer Cultural Center in Palma de Mallorca, Spain. Model of the house museum on the main level. Photo: Hisao Suzuki.

Size: 2,3 MB - 2499px × 2040px (format JPG)

This image is available for both paper and online publications.



57300-MOD_006

Caption: Flores & Prats Architects + Duch-Pizá. Casal Balaguer Cultural Center in Palma de Mallorca, Spain. Model of the ground floor street level, with exhibition gallery on two levels. Photo: Hisao Suzuki.

Size: 3,1 MB - 2380px × 2252px (format JPG)

This image is available for both paper and online publications.



57300-MOD_007

Caption: Flores & Prats Architects + Duch-Pizá. Casal Balaguer Cultural Center in Palma de Mallorca, Spain. Access with new exhibition gallery and concrete stairs. Photo: Hisao Suzuki.

Size: 3,2 MB - 2809px × 2212px (format JPG)

This image is available for both paper and online publications.



57300-MOD_008

Caption: Flores & Prats Architects + Duch-Pizá. Casal Balaguer Cultural Center in Palma de Mallorca, Spain. Gallery, new staircase and dome. Photo: Hisao Suzuki.

Size: 3,3 MB - 2867px × 2137px (format JPG)

This image is available for both paper and online publications.

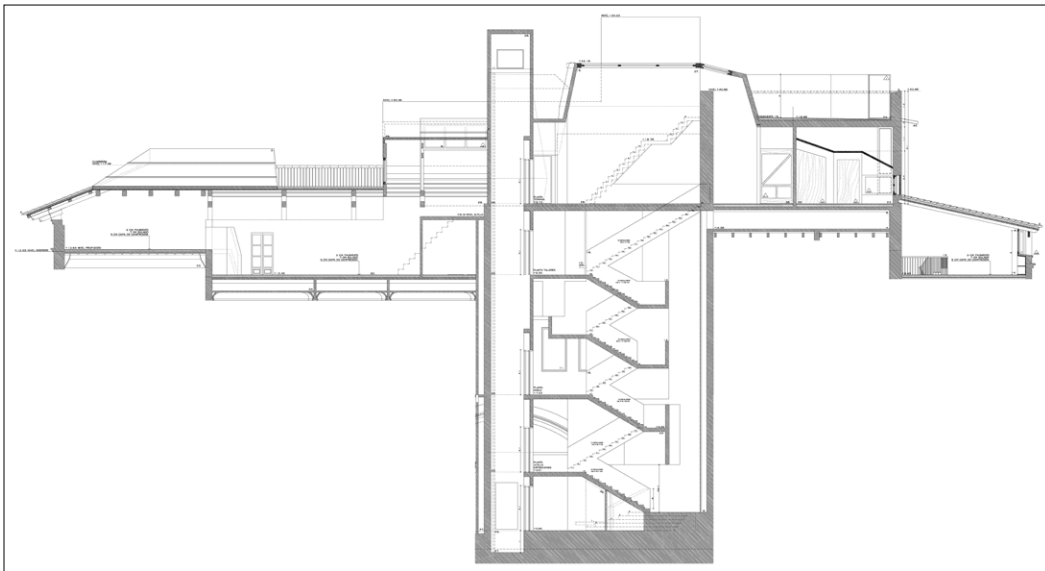


57300-MOD_009

Caption: Flores & Prats Architects + Duch-Pizá. Casal Balaguer Cultural Center in Palma de Mallorca, Spain. The different types of trusses. Photo: Hisao Suzuki.

Size: 2,3 MB - 2560px × 1920px (format JPG)

This image is available for both paper and online publications.



57300-MOD_010

Caption: Flores & Prats Architects + Duch-Pizá. Casal Balguer Cultural Center in Palma de Mallorca, Spain. Fragmentary section along the new concrete staircase and elevator.

Size: 7,3 MB - 8997px × 4863px (format JPG)

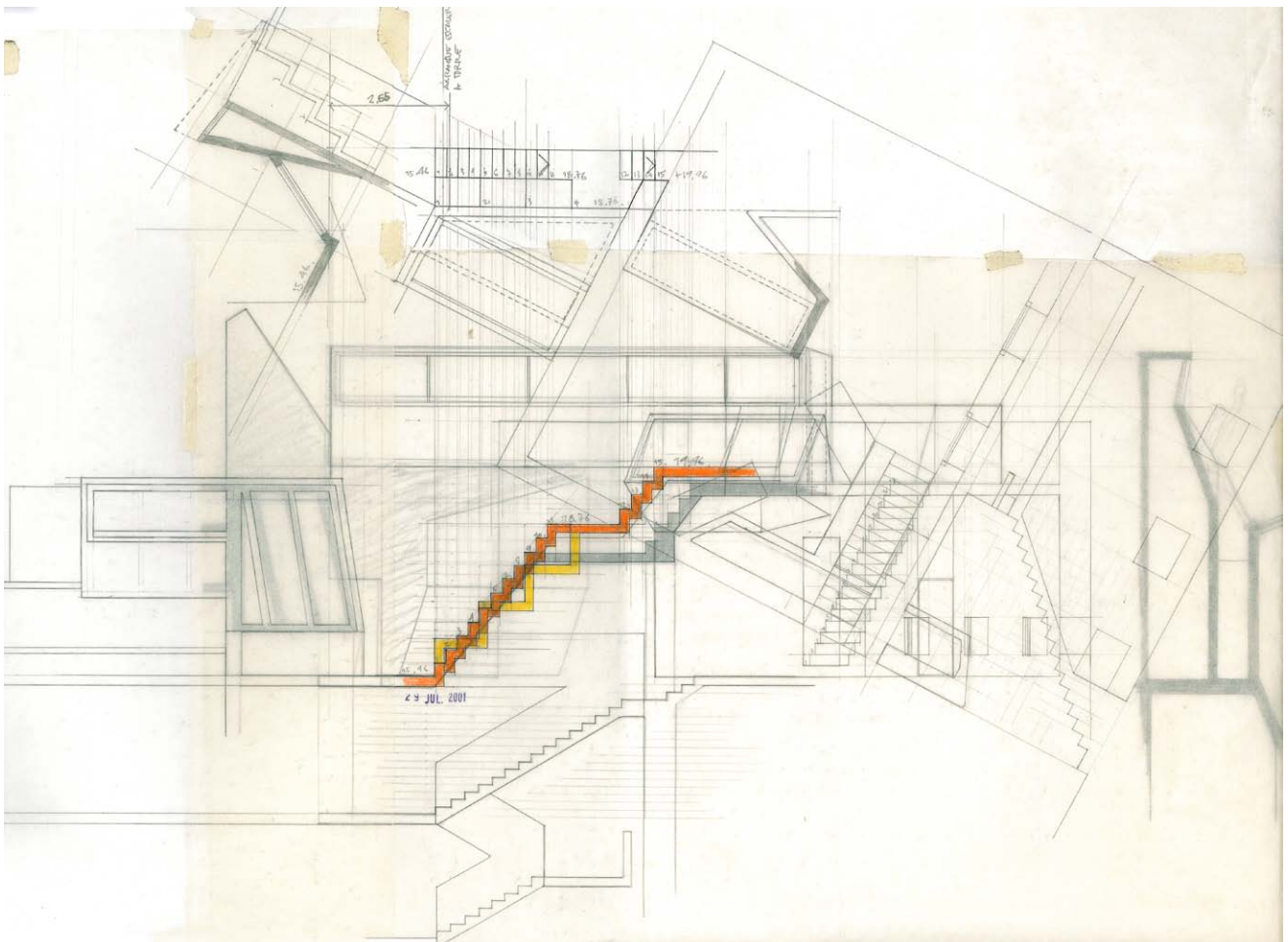
This image is available for both paper and online publications.

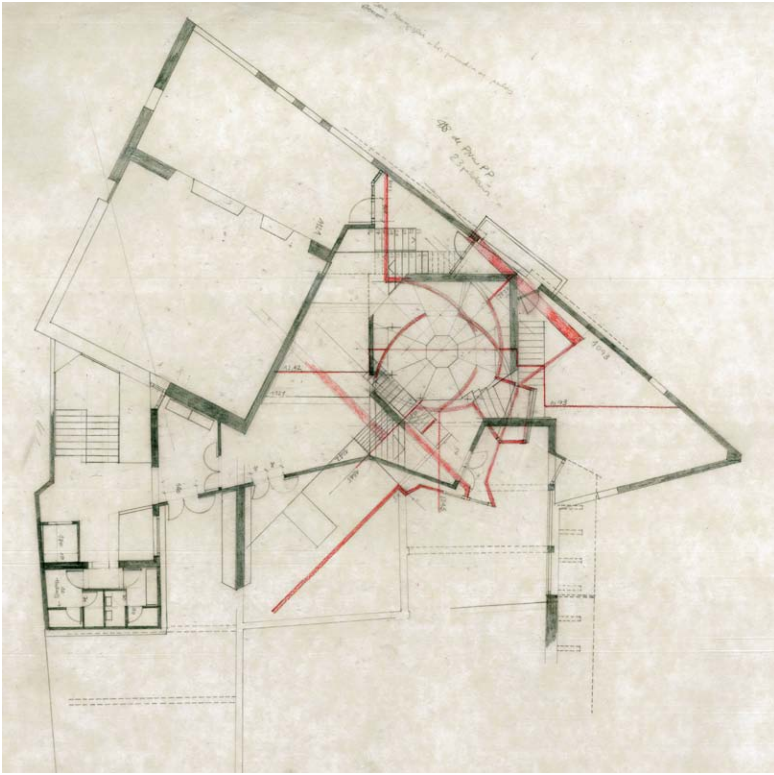
57300-MOD_011

Caption: Flores & Prats Architects + Duch-Pizá. Casal Balguer Cultural Center in Palma de Mallorca, Spain. Preparatory drawing of the arrival of the new stairs to the terrace level.

Size: 16,8 MB - 4962px × 3645px (format JPG)

This image is available for both paper and online publications.



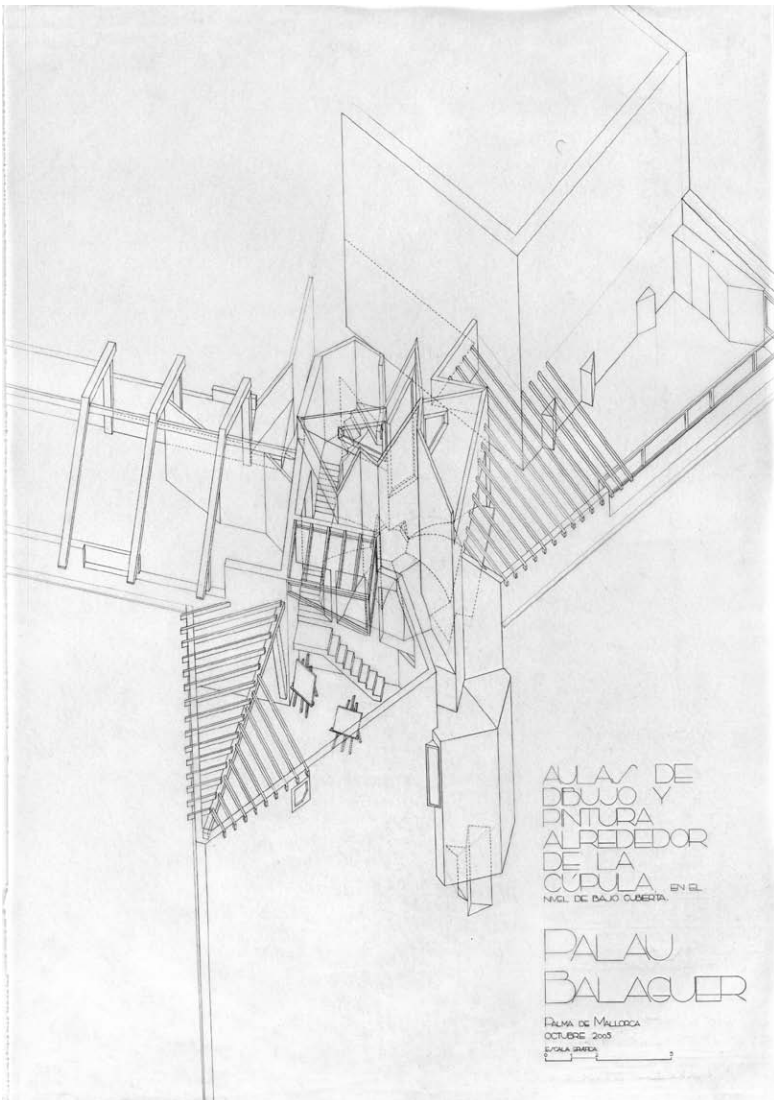


57300-MOD_025

Caption: Flores & Prats Architects + Duch-Pizá.
Casal Balaguer Cultural Center in Palma de Mallorca, Spain. Plan and section of test for skylight above the dome.

Size: 4,1 MB - 4103px × 4460px (format JPG)

This image is available for both paper and online publications.

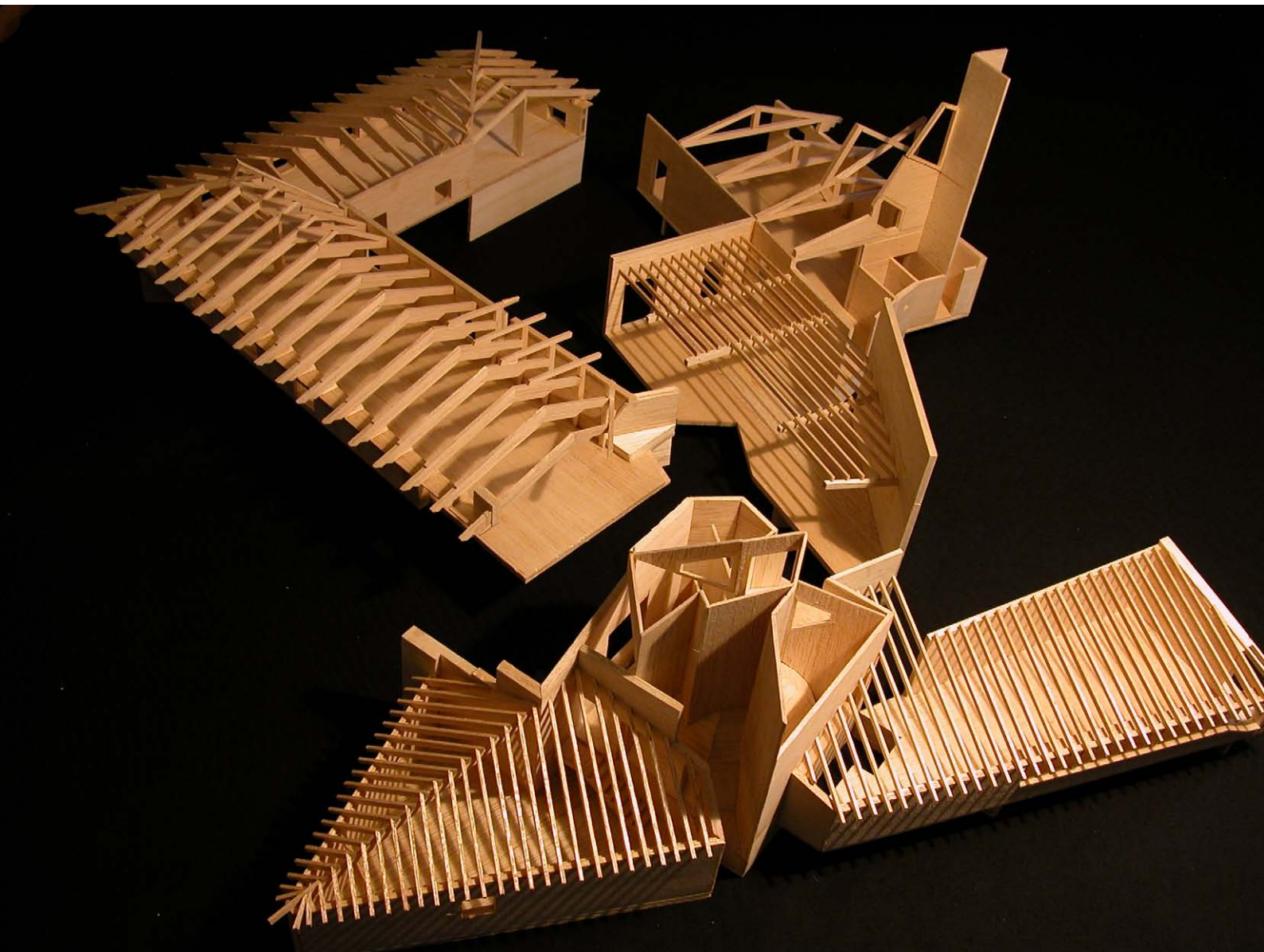


57300-MOD_026

Caption: Flores & Prats Architects + Duch-Pizá.
Casal Balaguer Cultural Center in Palma de Mallorca, Spain. Axonometric view of the new spaces around and above the existing dome.

Size: 4 MB - 1671px × 2362px (format JPG)

This image is available for both paper and online publications.

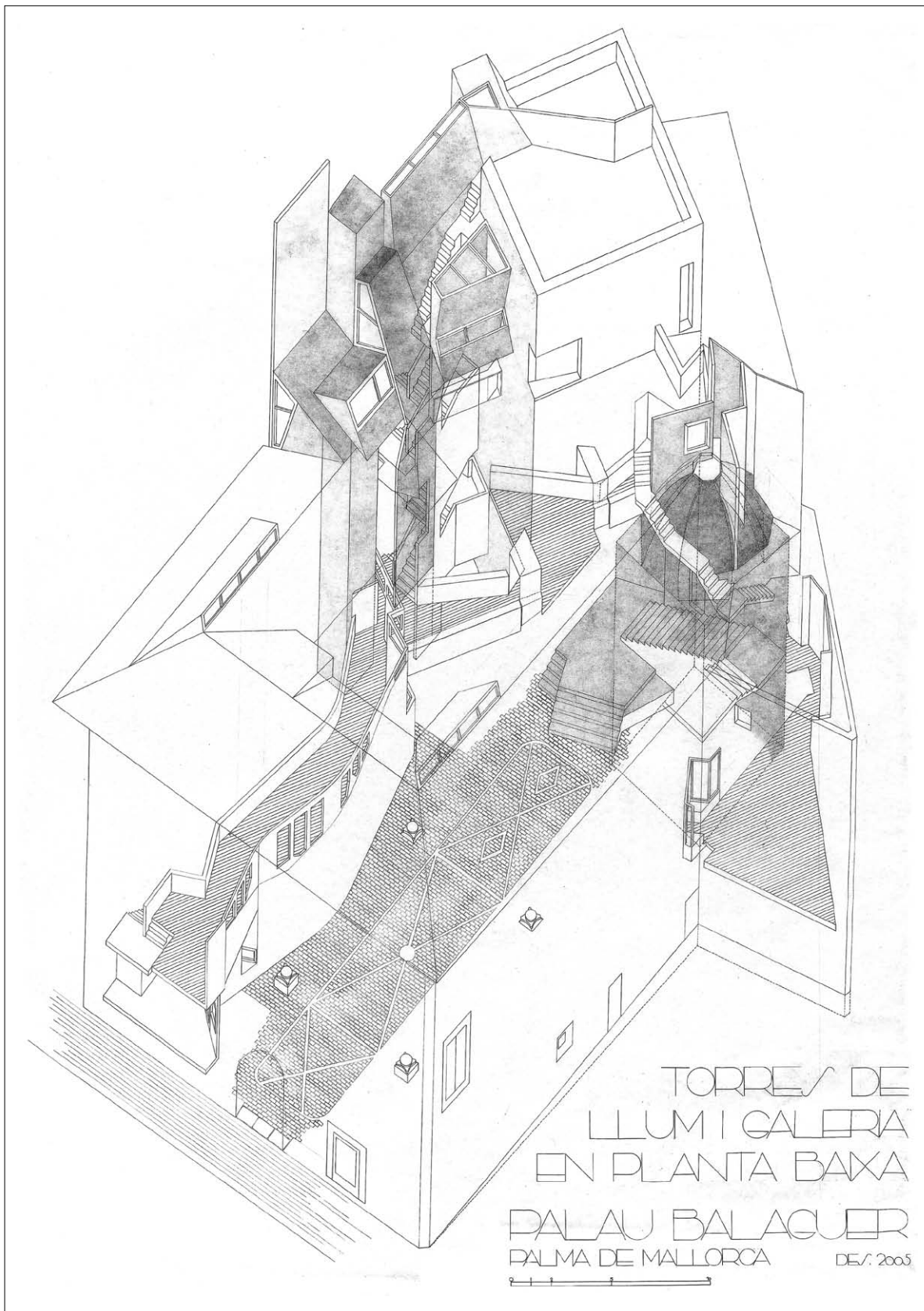


57300-MOD_014

Caption: Flores & Prats Architects + Duch-Pizá. Casal Balaguer Cultural Center in Palma de Mallorca, Spain. Model of the new wooden structure for the roof. Photo: Hisao Suzuki.

Size: 2,4 MB - 2560px × 1920px (format JPG)

This image is available for both paper and online publications.



57300-DWG_001

Caption: Flores & Prats Architects + Duch-Pizá. Casal Balaguer Cultural Center in Palma de Mallorca, Spain. Axonometric view of the new interventions in the palace.

Size: 4,1 MB - 2480px × 3508px (format JPG)

This image is available for both paper and online publications.

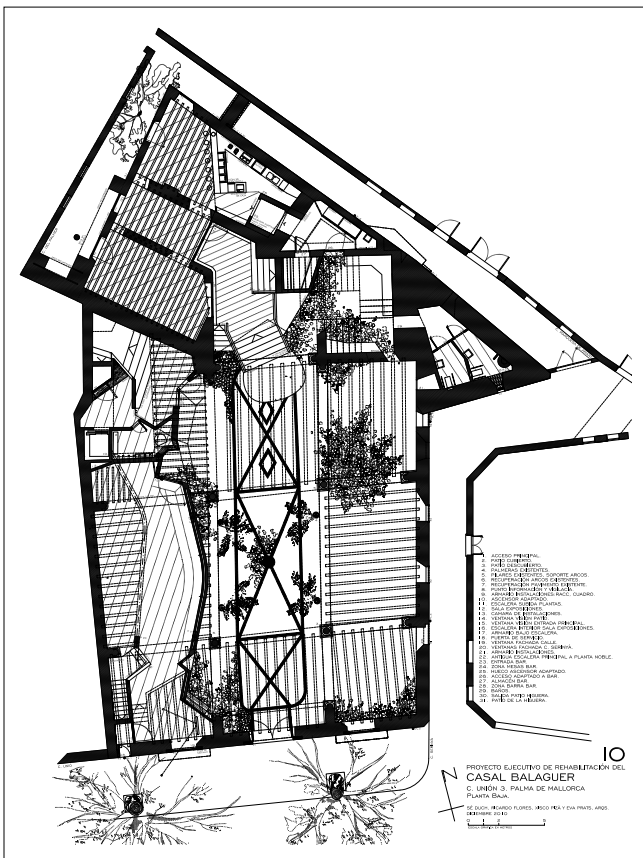


57300-DWG_002

Caption: Flores & Prats Architects + Duch-Pizá. Casal Balaguer Cultural Center in Palma de Mallorca, Spain. Situation plan of the Cultural Centre in the old town of Palma.

Size: 2,2 MB (format PDF)

This image is available for both paper and online publications.

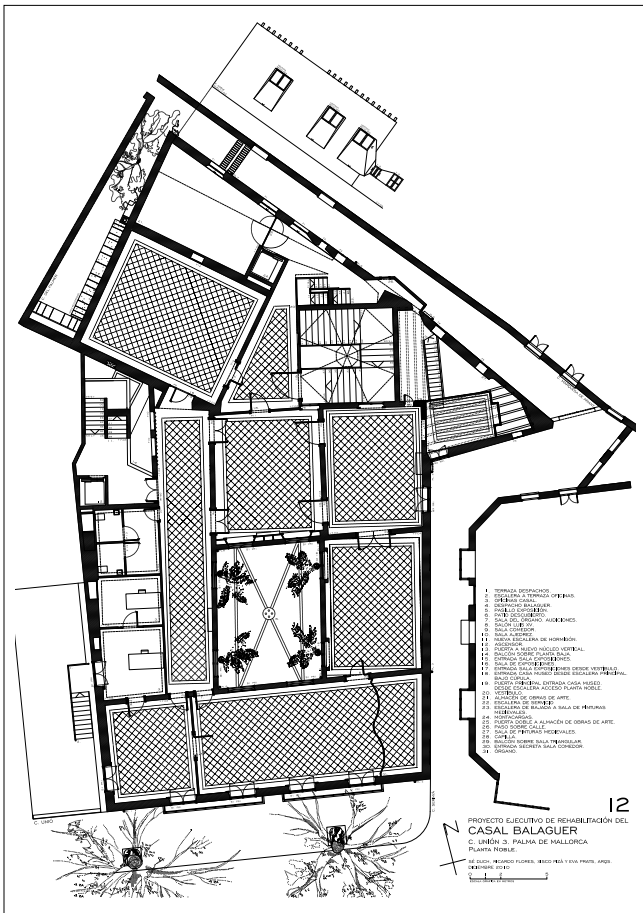


57300-DWG_003

Caption: Flores & Prats Architects + Duch-Pizá. Casal Balaguer Cultural Center in Palma de Mallorca, Spain. Ground floor level. Access through courtyard, exhibition gallery and bar-restaurant.

Size: 2,7 MB (format PDF)

This image is available for both paper and online publications.

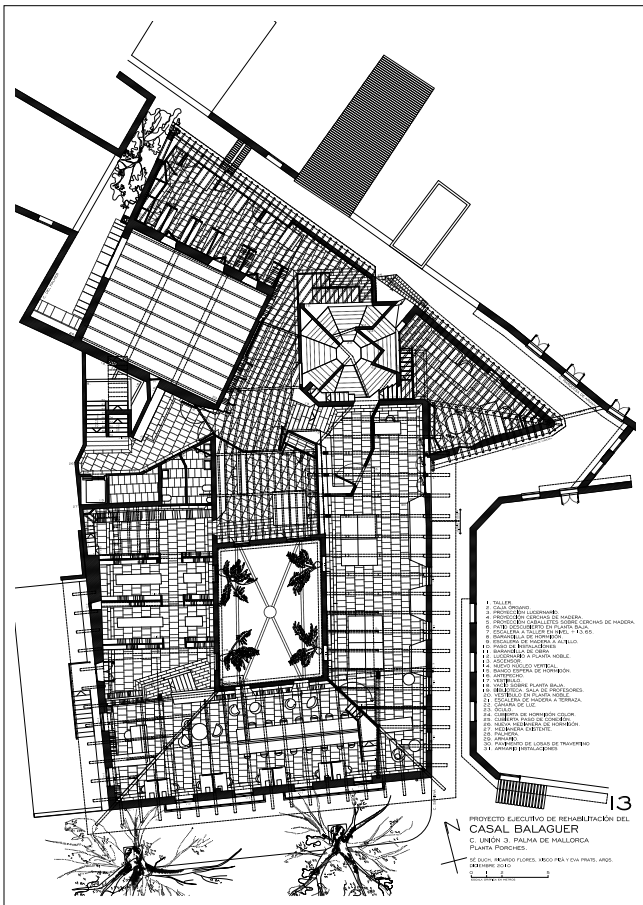


57300-DWG_004

Caption: Flores & Prats Architects + Duch-Pizá. Casal Balaguer Cultural Center in Palma de Mallorca, Spain. First floor level. House museum.

Size: 2,7 MB (format PDF)

This image is available for both paper and online publications.

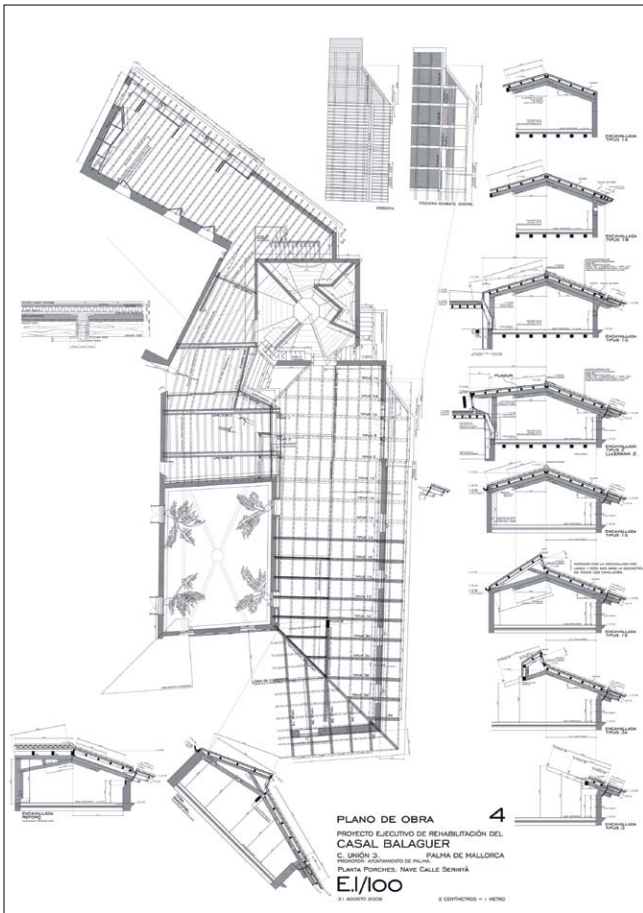


57300-DWG_005

Caption: Flores & Prats Architects + Duch-Pizá. Casal Balaguer Cultural Center in Palma de Mallorca, Spain. Second floor level. Library and reading rooms.

Size: 2,7 MB (format PDF)

This image is available for both paper and online publications.

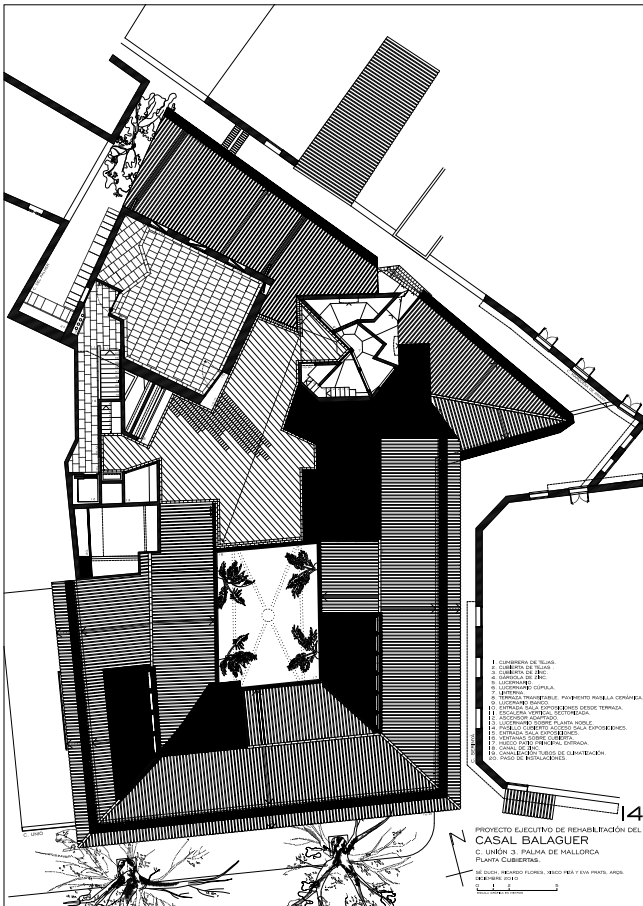


57300-DWG_006

Caption: Flores & Prats Architects + Duch-Pizá. Casal Balaguer Cultural Center in Palma de Mallorca, Spain. Plan of new wooden roof and series of section of trusses.

Size: 6,7 MB - 2480px × 3508px (format JPG)

This image is available for both paper and online publications.

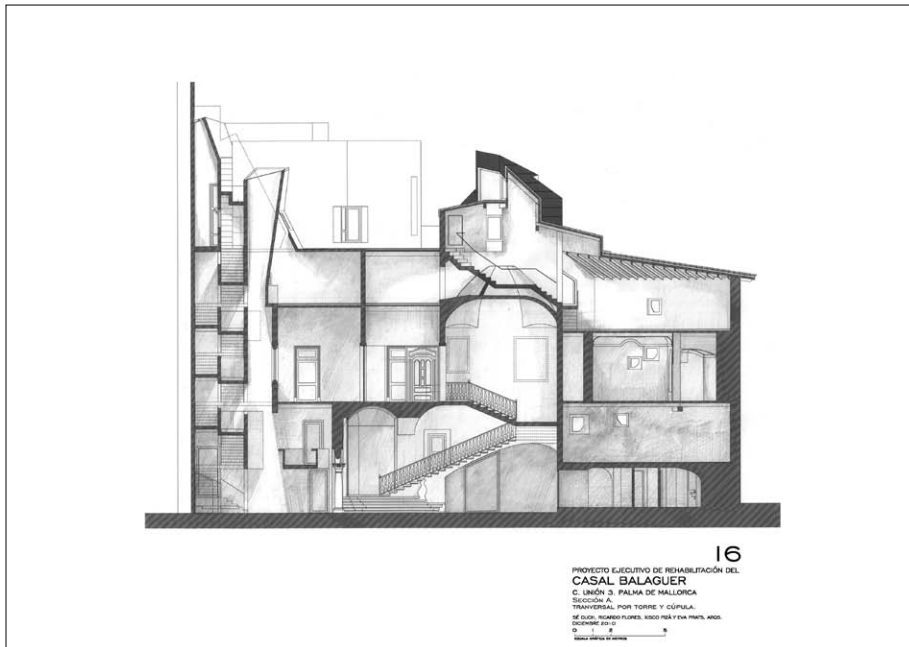


57300-DWG_007

Caption: Flores & Prats Architects + Duch-Pizá. Casal Balaguer Cultural Center in Palma de Mallorca, Spain. Roof level. Terrace and lecture room.

Size: 4,4 MB (format PDF)

This image is available for both paper and online publications.

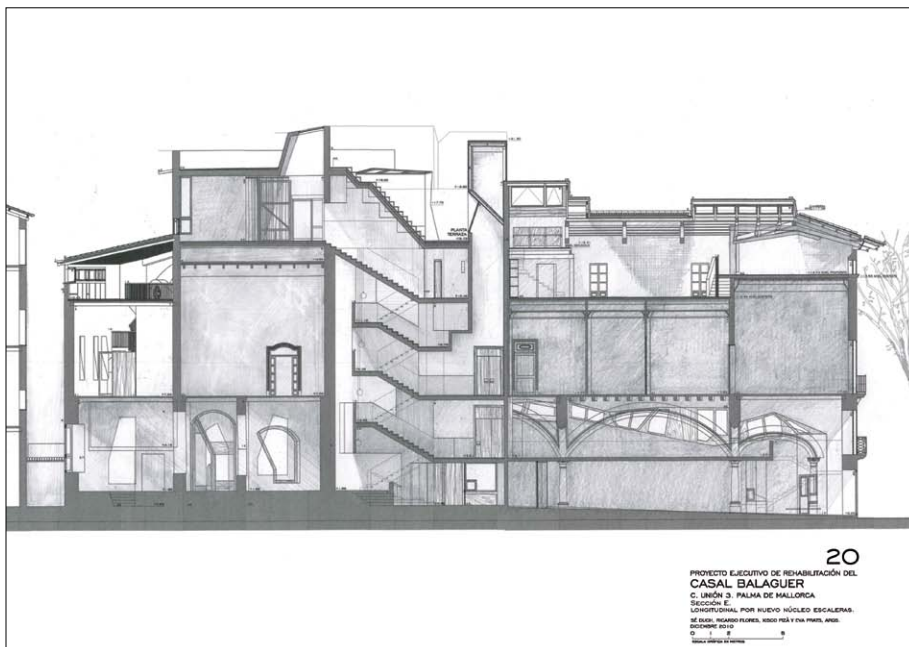


57300-DWG_008

Caption: Flores & Prats Architects + Duch-Pizá. Casal Balaguer Cultural Center in Palma de Mallorca, Spain. Transverse section through old and new staircases with lightwells above.

Size: 1,8 MB - 3508px × 2480px (format JPG)

This image is available for both paper and online publications.



57300-DWG_009

Caption: Flores & Prats Architects + Duch-Pizá. Casal Balaguer Cultural Center in Palma de Mallorca, Spain. Longitudinal section through exhibition gallery, new concrete stairs and bar-restaurant.

Size: 6,4 MB - 3508px × 2480px (format JPG)

This image is available for both paper and online publications.



57300-DWG_010

Caption: Flores & Prats Architects + Duch-Pizá. Casal Balaguer Cultural Center in Palma de Mallorca, Spain. Longitudinal section through courtyard, main staircase and dome.

Size: 6,2 MB - 3508px × 2480px (format JPG)

This image is available for both paper and online publications.



PLÀNOL D'OBRA
CASAL BALAGUER

56

C. UNIÓ 3. PALMA DE MALLORCA
PROMOTOR: AJUNTAMENT DE PALMA.
PLANTA PAVIMENTS TERRASSA I TORRE.

E.I./50

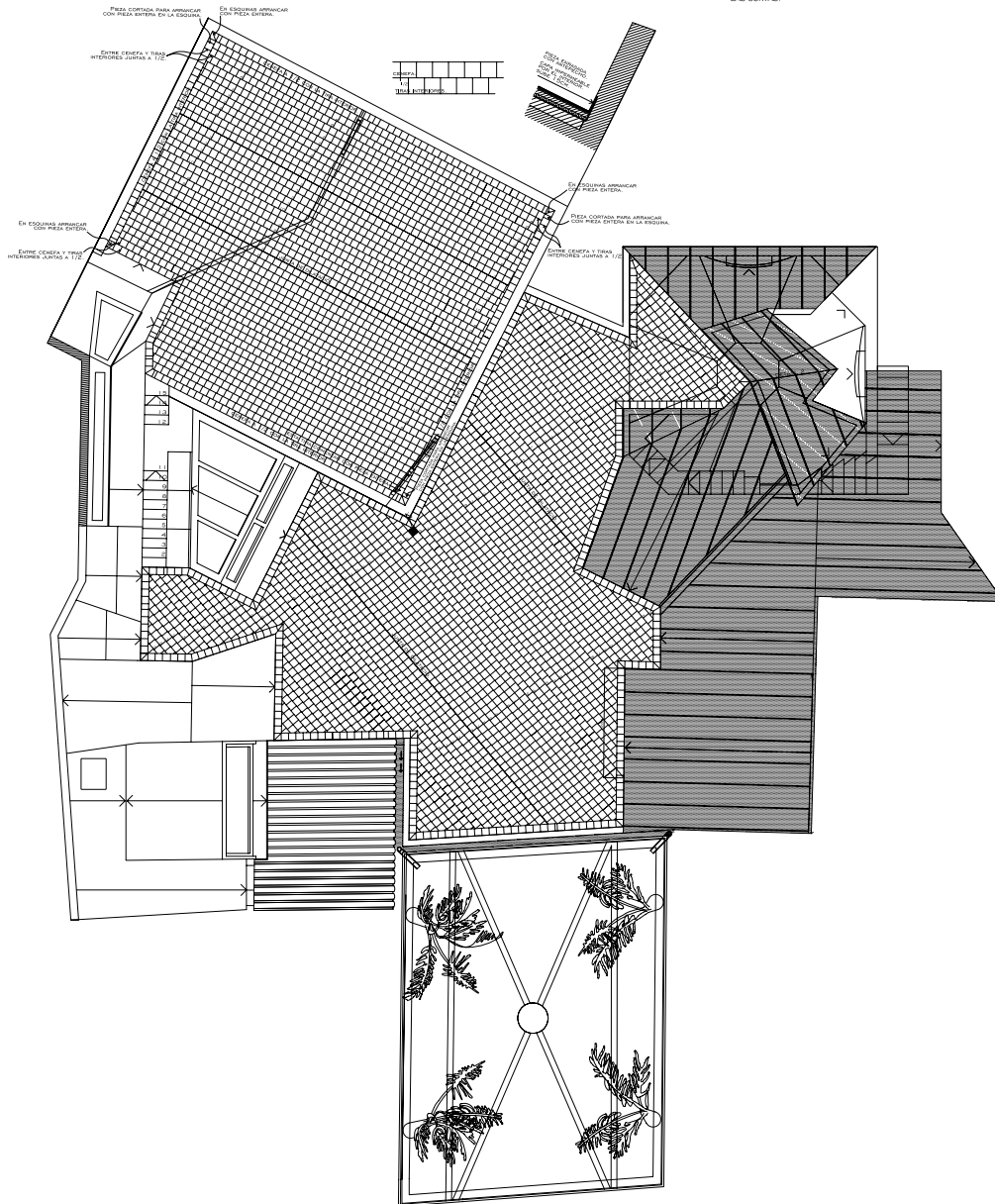
2 CENTÍMETRES = 1 METRE.

MA. JOSÉ DUCH, RICARDO FLORES, FRANCISCO PIZA I EVA PRATS, AROS.
08 MARÇ 2010.
22 MARÇ 2010: PECES DE 10x10
21 ABRIL 2010: JUNTES DE QUALIDAD.

1- CENEJAS ARRANCANDO CON PIEZAZ ENTERA EN LAS ESQUINAS.

2- JUNTAS A 1/2 ENTRE LAS CENEJAS Y LAS TIRAS INTERIORES.

3- EN LA TORRE ABSORBER APARICIÓN DE CUCHILLOS EN LAS TIRAS INTERIORES CON LAS JUNTAS.



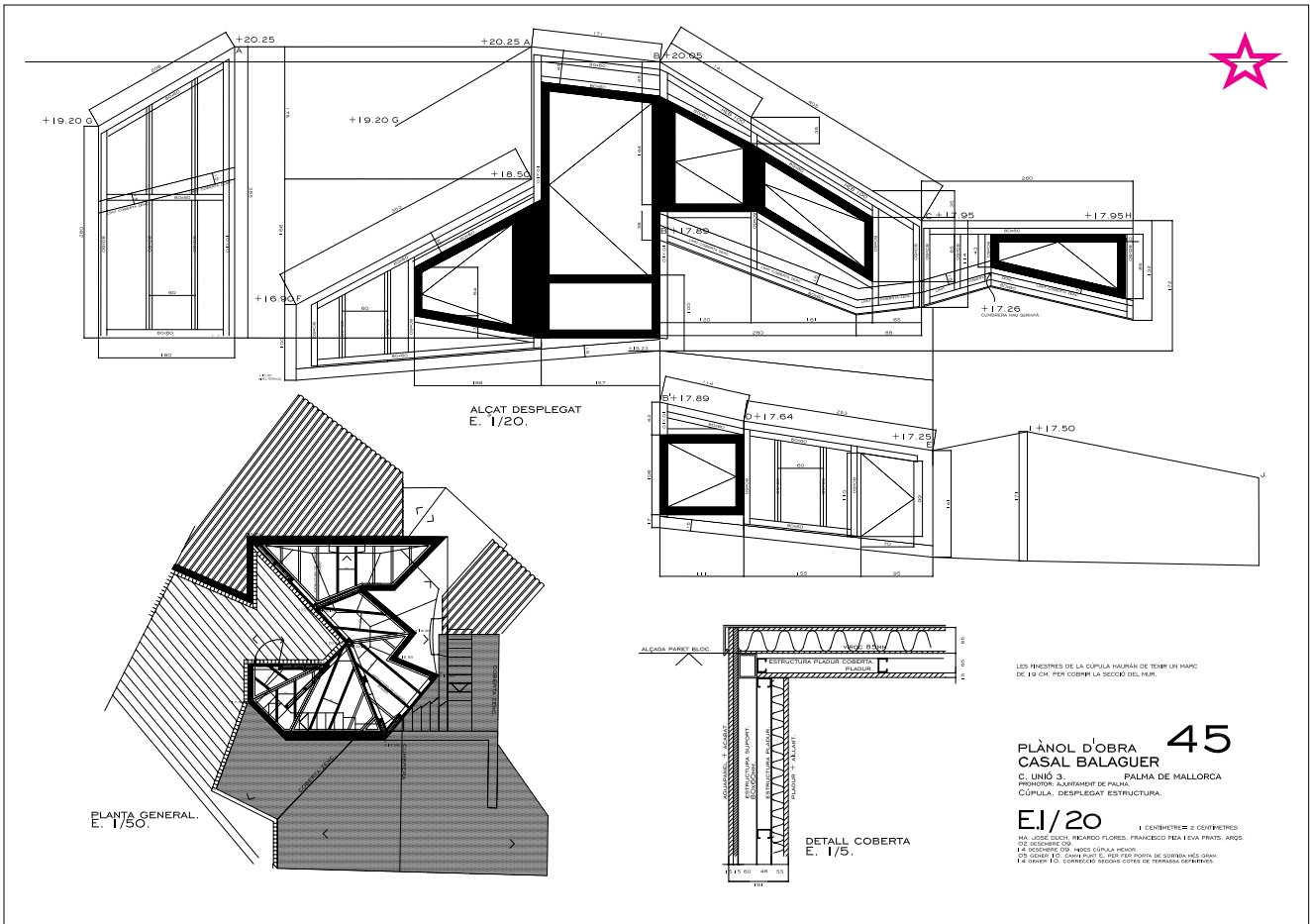
57300-DET_001

Caption: Flores & Prats Architects + Duch-Pizá. Casal Balaguer
Cultural Center in Palma de Mallorca, Spain. Pavement at roof
terrace and tower.

Size: 4,8 MB (format eps)

Please note: This image is available for paper publications only.



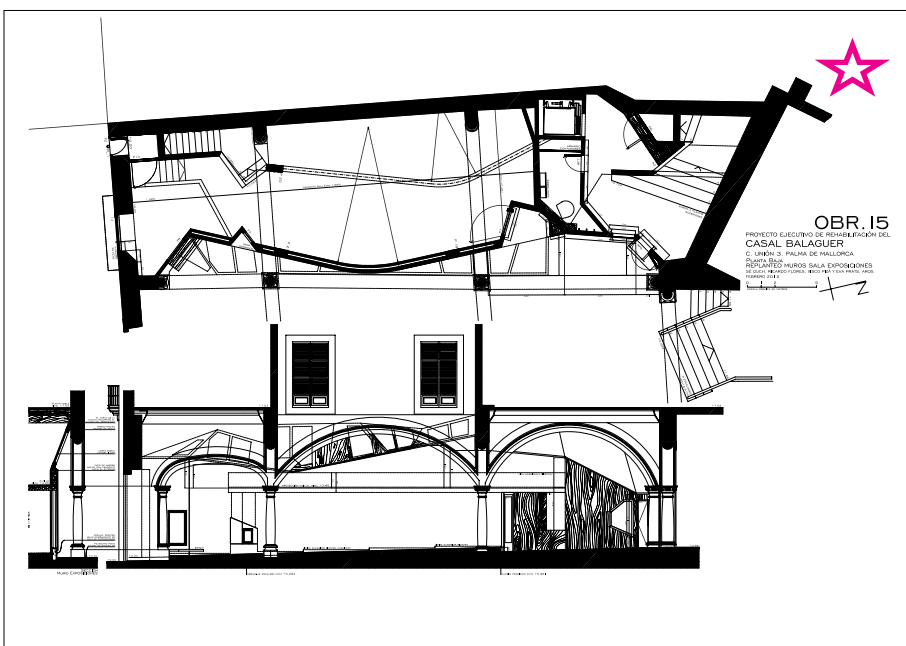


57300-DET_002

Caption: Flores & Prats Architects + Duch-Pizà. Casal Balaguer Cultural Center in Palma de Mallorca, Spain. Detail of structure of the roof over the dome.

Size: 7,7 MB (format eps)

Please note: This image is available for paper publications only.



57300-DET_003

Caption: Flores & Prats Architects + Duch-Pizà. Casal Balaguer Cultural Center in Palma de Mallorca, Spain. Exhibition gallery at ground floor.

Size: 3,4 MB (format eps)

Please note: This image is available for paper publications only.



57300-PO_001

Caption: Eva Prats and Ricardo Flores, Flores & Prats Architects.

Size: 61,6 MB - 8268px × 8326px (format JPG)

This image is available for both paper and online publications.

PRESS OFFICE

For additional information, to receive high resolution images and to set up an interview with the architect you may contact:

Susanne Lambert

Image MEDIA AGENCY
via Venti Settembre 84
50129 Firenze, Italy
susanne.lambert@image-web.org

tel +39 055 4684 187

f t in