

Grand Cru du Siecle

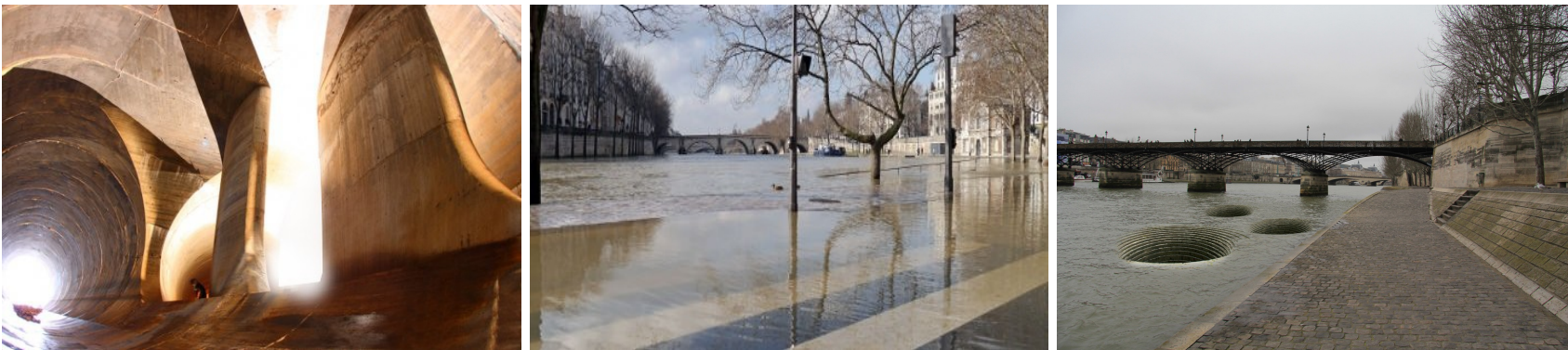
Flood prevention pavilion bar

With the present threat of Paris flooding, this pavilion bar acts as part of Paris' flood control infrastructure. Located on the banks of the River Seine the pavilion consists of an enclosed circular glass bar cantilevered over a bell mouth spillway which allows water to enter from it's entire perimeter, this water is taken, via submerged canals, upstream to the impounded lakes and nearby reservoirs.

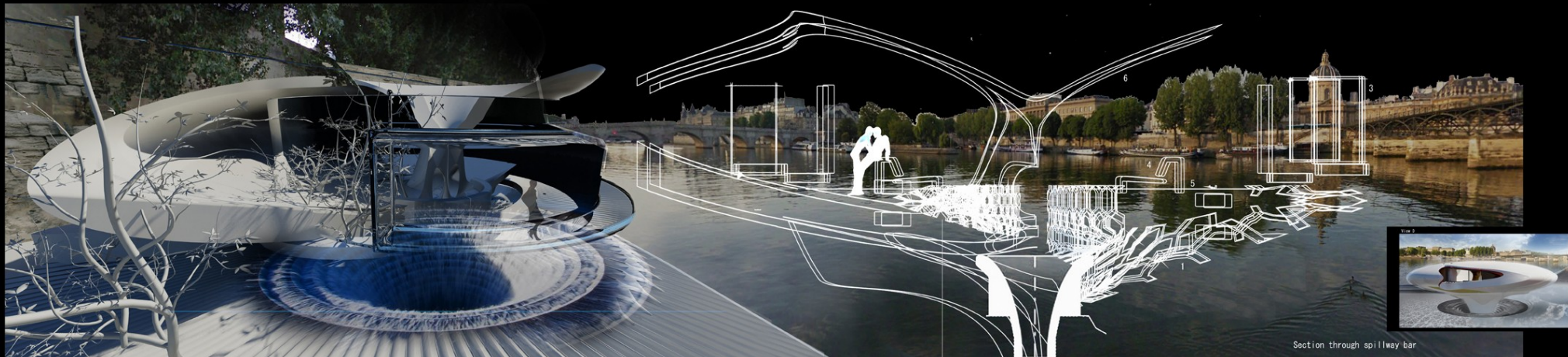
The laminated glass circular bar is zoned to direct water through it's ramps and into the spillway situated under a moveable glass clad floor. The form guides the flood away from the street level.

A raised glass corridor, floats over the Seine as water rises and flows through the rest of the design. The industrial function of the bar is combined with an ethereal monocoque canopy shell that houses the light and reflective nature of the champagne bar's interior, etched glass gives an effervescent feel with the lattice spillway filtering water as it is channelled through the underground network.

Paris's ornate manhole covers the entrances to underground conduits, this project attempts a dialogue between architecture, Paris water infrastructure and substructures as a way of managing a flooded city.







Section through spillway bar



View A

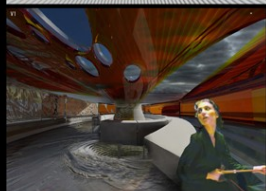
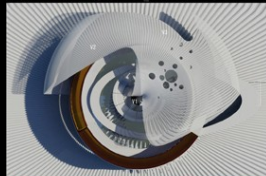


View B



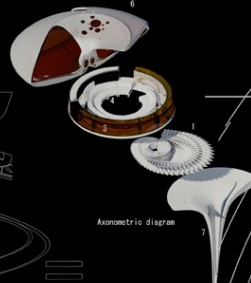
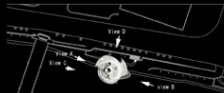
View C

Plan of single-shell aluminium semi-monocoque envelope



Context section diagram

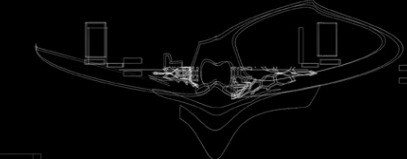
Context diagram plan



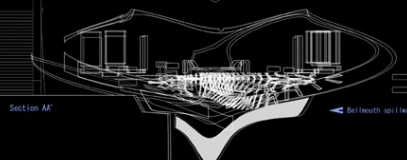
Axonometric diagram



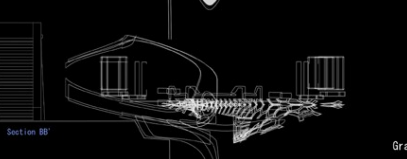
Water circulation diagram



Section A-A



Section B-B



Section C-C



Section D-D



Plan of aluminium semi-monocoque shell and bell mouth spillway bar

Grand Cru du Siecle

With the present threat of Paris flooding, this Champagne bar acts as part of Paris' flood control infrastructure.

The enclosed circular glass bar rests over a bell mouth spillway which allows water to enter from its entire perimeter, this water is taken via submerged canals, upstream to the impounded lakes and nearby reservoirs.

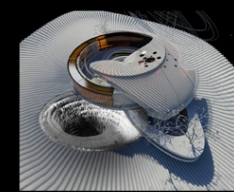
The champagne bar contributes to flood management in the city.

The circular bar is zoned to direct water through its ramps and into the spillway situated under a moveable glass clad floor. A raised glass corridor floats over the Seine as water rises and flows through the rest of the design. The industrial function of the bar is combined with an ethereal monocoque shell that houses the light and reflective nature of the champagne bar's interior, etched glass gives an effervescent feel with the lattice spillway filtering water as it is channelled out of Paris through the underground network.

Paris's ornate manhole covers the entrances to underground conduits, this project attempts a dialogue between architecture, Paris water infrastructure and substructures as a way of managing a flooded city. The pre-cast aluminium semi-monocoque outer shell is strong and flexible enough to withstand water impact shift and torsion due to the rising water levels in Paris.



- 1 Pre cast concrete spillway filter
- 2 Grand Cru du Siecle bar walkway
- 3 Suspended laminate glass corridor bar
- 4 Seating over glass covered spillway
- 5 Glass panel bar floor
- 6 Aluminium semi-monocoque shell
- 7 Bell mouth spillway



Aluminium semi-monocoque shell and glass bar corridor hangs over bell mouth spillway

