

Project

Nanjing International Youth Cultural Centre

Location

Nanjing, China

Date

2011/2018

Client

Hexi New Town
Planning Bureau

GFA incl Basements

465,000 m²

Status

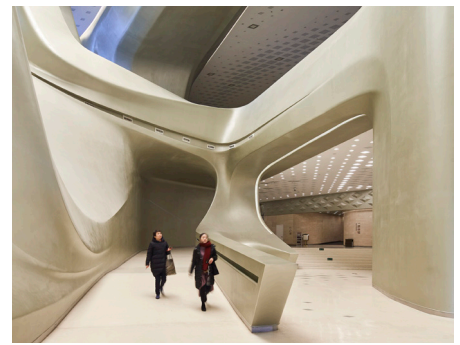
Completed for 2014 Youth
Olympic Games /
Jumeirah Hotel 2018

The Nanjing International Youth Cultural Centre is located on the river in Hexi New Town; Nanjing's new central business district (CBD). The project includes a 106,500 m² conference centre, two towers totaling 258,500 m², 100,000 m² of basement areas and the plaza that terminates the CBD's main axis on the riverfront.

The masterplan expresses the continuity and connectivity between the urban environment of Hexi New Town, riverside parkland, and the rural landscapes of Jiangxinzhou Island in the Yangtze River connected by a pedestrian bridge.

The Nanjing International Youth Cultural Centre occupies a site area of 5.2 hectares with a construction floor space of 465,000 square metres. The taller of the two towers is 315 metres/68 floors high and contains office floors and the Jumeirah Hotel. The shorter tower is 255 metres/59 floors in height and houses a further 4-star hotel. The two towers share a five-level, mixed-use podium that houses the Cultural Centre.

The four major program elements of the cultural centre (a Conference Hall, an Auditorium, a Multifunctional Hall and Guest Zone) are independent volumes surrounding a central courtyard. These four elements merge into a singular whole at higher levels, allowing pedestrians to walk through an open landscape at ground level. The Conference Hall seats 2,100 and is equipped with a multi-purpose proscenium stage suitable for conferences, cultural and theatrical events. The Auditorium seats 500 and is optimized for both acoustic orchestral performances and also shows using audio equipment.



01



02



03

Architects
Zaha Hadid Architects**Design**
Zaha Hadid
Patrik Schumacher**ZHA Project Director**
Nils-Peter Fischer**ZHA Consulting Associate**
Cristiano Ceccato**ZHA Project Architect**
Shao-Wei Huang**ZHA Lead Facades & Envelope**
Shao-wei Huang
Lydia Kim**ZHA Lead Conference Centre**
Melike Altinisik**ZHA Lead Towers & Podium**
Garin O'Aivazian**ZHA Lead Interiors**
May-Jinqi Qin**ZHA Lead Landscape & Urbanism**
Carolina Lopez-Blanco**ZHA Lead Site Supervision**
Ed Gaskin**ZHA Competition Team**
Garin O'Aivazian, Jalal El-Ali, Kyla Farrell, Maria Tsironi, Matthew Richardson, Melike Altinisik, Meng Chan Tang, Mirco Becker, Mostafa El Sayed, Paolo Gamba, Saman Saffarian, Shajay Bhooshan, Shao-wei Huang, Shyamala Duraisingam, Spyridon Kaprinis, Suryansh Chandra, Yevgeniya Pozigun**ZHA Project Team**
Alexandros Kallegias, Ashwin Shah, Carlos Michel-Medina, Carlos Piles Puig, Chao Wei, Charbel Chagoury, Christy Yin, David Doody, Duarte Reino, Elena Scripelliti, Emma Chen, Ermis Chalvatzis, Eugene Leung, Frenji Koshy, George Frenji, Ho-Ping Hsia, Hongdi Li, Igor Pantic, Jamie Mann, John Randle, Julia McLeod, Katharina Hieger, Konstantinos Mouratidis, Leonid Krykhtin, Leo Wu, Mattia Gambardella, Michael Grau, Michael Sims, Mostafa El Sayed, Mu Ren, Nassim Eshaghi, Natassa Lianou, Nicholette Chan, Niqui Berkowski, Patryk Ruszkowski, Sebastian Andia, Shajay Bhooshan, Soomeen Hahm, Spyridon Kaprinis,

Vincent Nowak, Yuchen Zhang, Yue Shi, Yun Zhang

ZHA Site Supervision Team
Juan Liu, David Chen, Liyuan Zhang, Vincenzo Cocomero, Xi Wang, Xin Ji, Yan Geng**Consultants****Architect of Record**
China Architecture Design and Research Group**Structural Engineer**
BuroHappold Engineering, China Architecture Design and Research Group**MEP Engineer**
BuroHappold Engineering, China Architecture Design and Research Group**Vertical Transportation Consultant**
Dunbar and Boardman**Façade Engineer**
BuroHappold Engineering**Landscape Architect**
SWA Group**Lighting Consultant**
Brandston Partnership Ltd**Acoustics Consultant**
Zhejiang University, China**Theatre Consultant**
China Art and Technology Institute**Main Contractor**
China State Construction Engineering Corporation Division 8, China State Construction Engineering Corporation Division 3**Data****Tower 1**
255 m**Tower 2**
315 m**Conference Hall**
seats 2,100**Auditorium**
seats 500**Hotels**
136,000 m²**Conference Centre**
106,500 m²**Offices**
122,500 m²**Basement**
100,000 m²

The towers create a dynamic transition from the vertical of the urban CBD to the horizontal topography of the river. The taller tower signifies the position of the plaza both within the urban grid of Hexi New Town and on the Nanjing Skyline. The natural landscapes of the river are connected to the urban streetscape of the new CBD through the fluid architectural language of the mixed-use podium and conference centre. This architectural composition juxtaposes the vertical (city) and horizontal (river and landscape).

At the interface between tower and podium, the glass facade gradually transforms into a grid of rhomboid fibre-concrete panels, giving the large surfaces of podium and conference centre a solid and sculptural appearance; underlining the dynamic character of the form and providing daylight to the building's interior.

The centre is the first completely top-down/bottom-up tower construction in China - starting at street level and building upwards and downwards in tandem - constructed in only 34 months using ZHA's expertise and experience in 3D digital BIM (Building Information Modelling) design and construction management to reduce the on-site programme by a year to only 18 months.

The 465,000m² Nanjing International Youth Cultural Centre initially opened for the 2014 Youth Olympic Games. Jumeirah Hotel Nanjing now occupies the centre's tallest tower. One of the world's leading luxury hotel brands, Jumeirah recently completed their Nanjing Hotel as the city's premier hospitality destination.



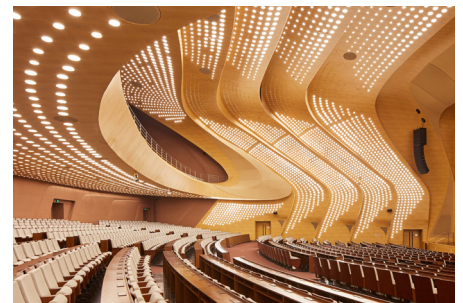
04



05



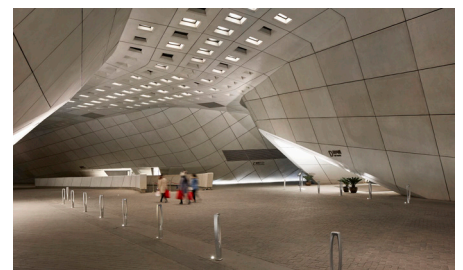
06



07



08



09