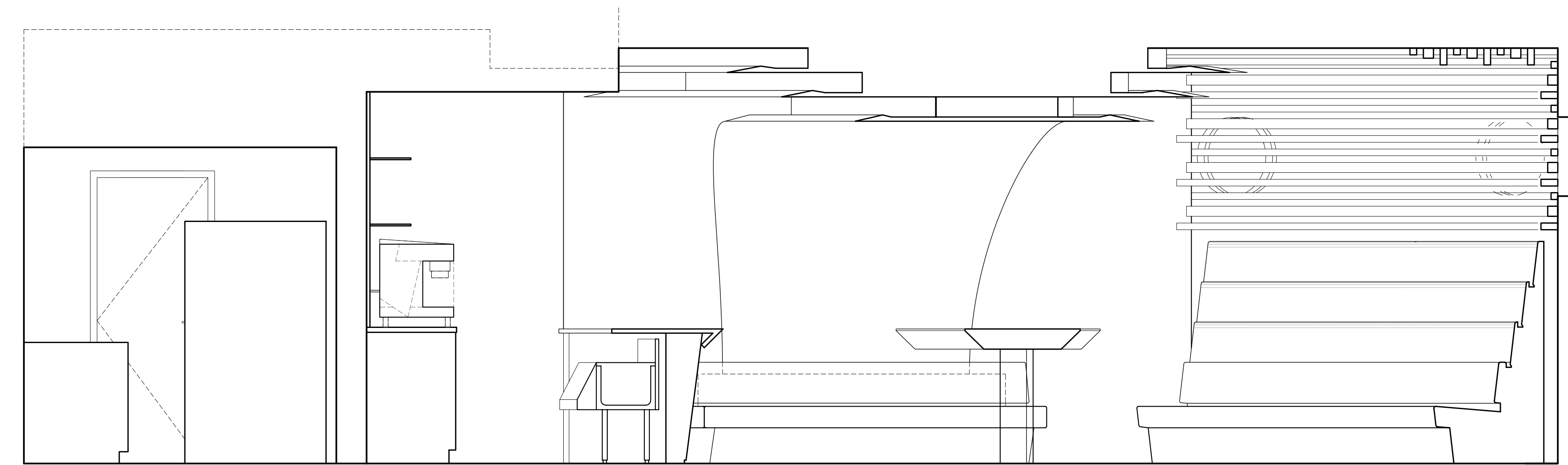
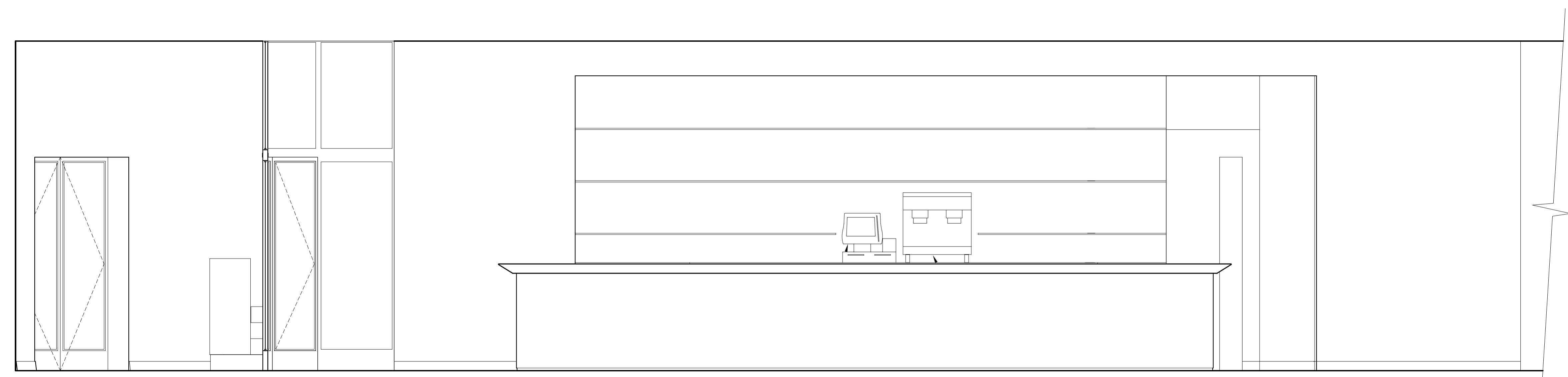


0 1' 2' 4'
SECTION 03
 SCALE: 1/2" = 1'-0"



0 1' 2' 4'
SECTION 02
 SCALE: 1/2" = 1'-0"



0 1' 2' 4'
ELEVATION NORTH-EAST 01
 SCALE: 1/2" = 1'-0"

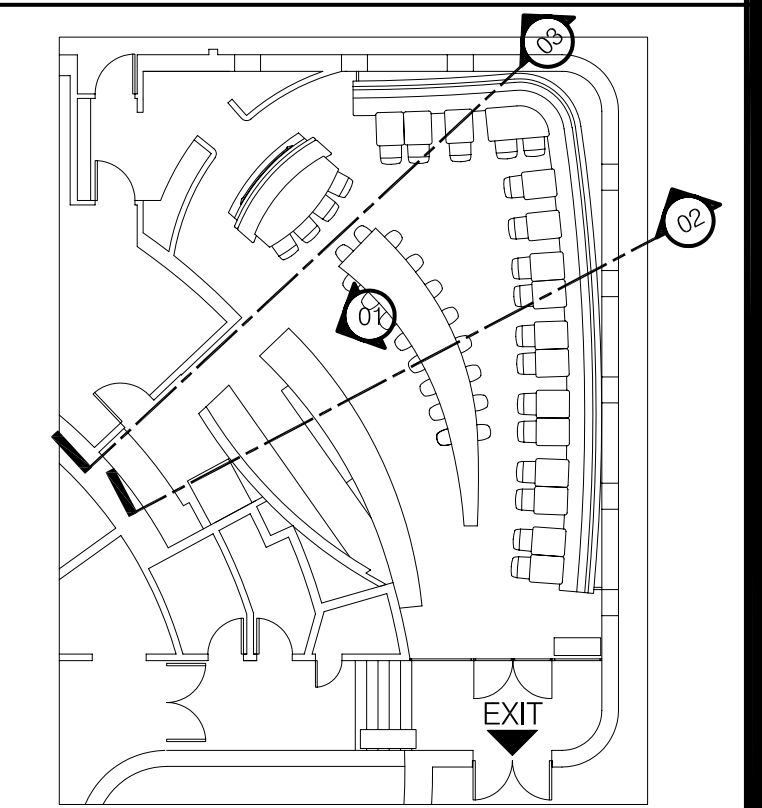
ARCHITECT:
 ANDRE KIKOSKI ARCHITECT, PLLC
 180 VARICK STREET, SUITE 1316
 NEW YORK, NY 10014
 P: 212.627.0240
 F: 212.627.0242

CLIENT:
 RESTAURANT ASSOCIATES
 330 FIFTH AVENUE
 NEW YORK, NY 10001
 P: 212.613.5500
 F: 212.295.5777

MEP ENGINEER:
 HHF DESIGN CONSULTING, LTD.
 1751 SECOND AVENUE, SUITE 201
 NEW YORK, NY 10128
 P: 212.876.5341
 F: 212.860.7394

LIGHTING DESIGNER:
 TILLOTSON DESIGN ASSOCIATES
 40 WORTH STREET, SUITE 1680
 NEW YORK, NY 10014
 P: 212 675-7760
 F: 212 675-7826

INSPECTIONS:
 - DIRECTIVE 14
 - NO CHANGE OF USE, OCCUPANCY, EGRESS, OR ZONING THIS APPLICATION
 - FIRESTOP / DRAFTSTOP



KEY PLAN

FOR CONSTRUCTION

NO.	REVISION/SUBMISSION	DATE
--	95% CONSTRUCTION DOCUMENTS	04/14/2009
--	95% CONSTRUCTION DOCUMENTS	04/27/2009
--	RA - DESIGN REVIEW	06/18/2009
--	SRGM - DESIGN REVIEW	07/01/2009
--	100% CONSTRUCTION DOCUMENTS - BID	07/02/2009
--	DOB / LPC SUBMITTAL	07/06/2009
1	CONSTRUCTION DRAWINGS	09/01/2009

**GUGGENHEIM:
 RESTAURANT**
 1071 5TH AVENUE
 NEW YORK, NEW YORK

ELEVATIONS & SECTIONS

PROJ. NUM: 0818
 SET: CONSTRUCTION DOCUMENTS
 ISSUED: 09/01/2009
 DRAWN BY: GJ
 CHECKED BY: AK, BL
 FILENAME: AKA_A-402_REST_ELEV

SEAL & SIGNATURE:

A-402.01