

VIP Area
Design Concept

Concept

A concept that creates an inviting atmosphere with its use of Oak and carpeted flooring as well as high end details and beautifully designed furnishings.



Concept : Floor Plan



House of Coffee Bar

The original House of Coffee bar incorporates a new Birch Ply work top. This allows room for coffee machines and ample space to serve and engage with visitors.



Seating Area

The seating area encourages visitors to sit and relax whilst enjoying a coffee. The area will receive ambient light from festoon lighting suspended above.



Seating Area

The seating area offers a relaxed contrast to the rest of the space with its' oak floor, sofas and black dividers. Coffee related artwork on these dividers act as a little detail to make the whole interior look high end and immersive.



Seating Area

Stool areas allow space for people to sit and chat. Set back partitioning booths are well lit with tables and benches, this area breaks up the space whilst functioning as areas of interaction.



Enclosed Seating Area

This area provides a private space for individuals to sit and talk .
The area has large amounts of table and bench space.



Hotel Chocolat.

The Hotel Chocolat stand is spacious and well lit. A shelving unit allows products to be easily displayed from behind the bar. The bar allows space for coffee machines and the ability to serve customers with ease.



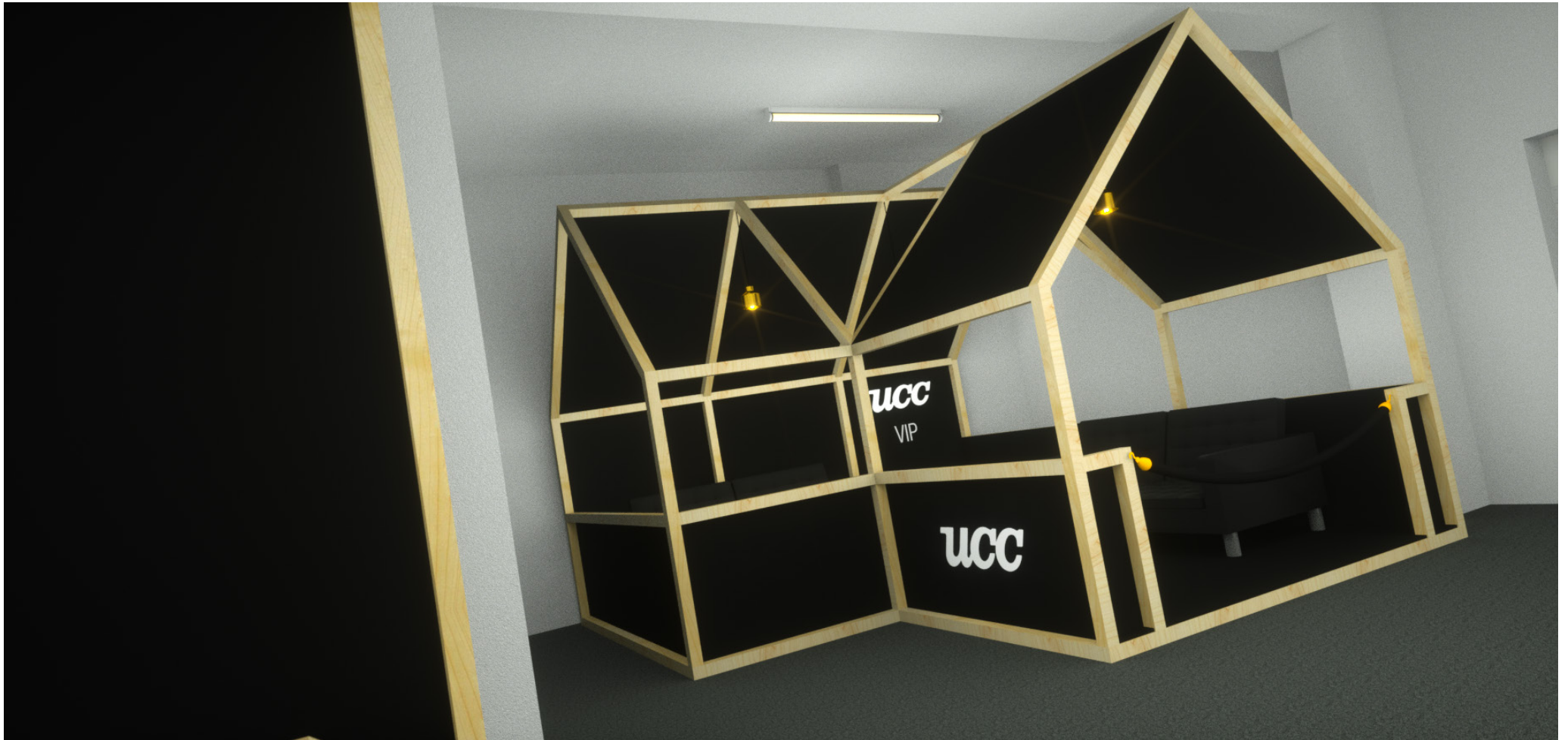
Hotel Chocolat.

Birch Ply signage clearly displays the company logo from behind the bar. The thick bar top gives a premium look to the stand and is accentuated by the gold pendant lighting.



UCC

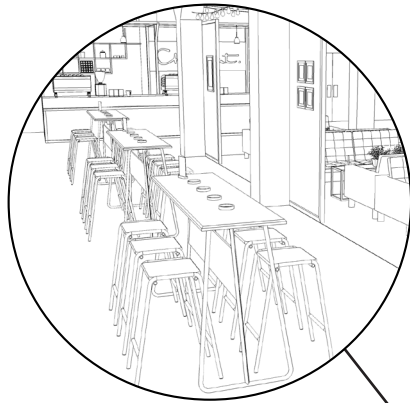
UCC VIP stand offers seating area with pendant lighting. Area is private with a low wall surrounding the booth.



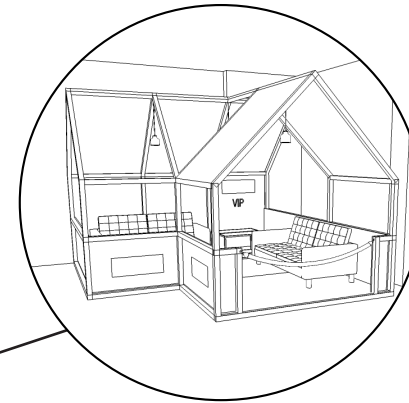
UCC VIP



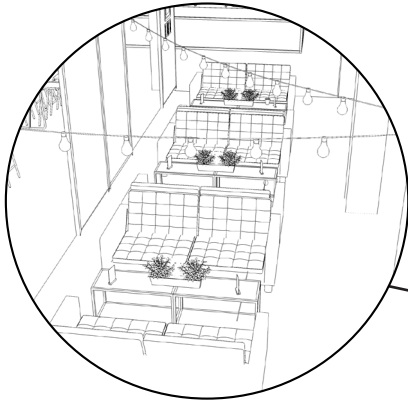
Concept Details



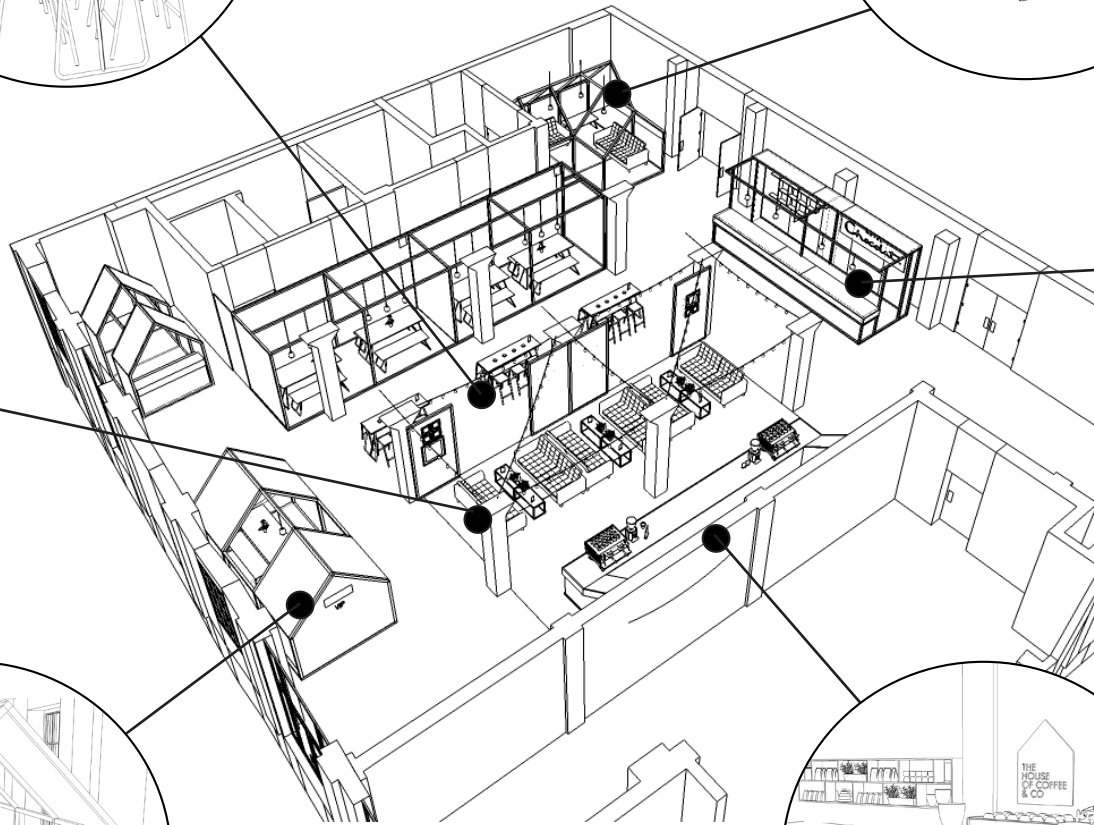
Benches and stools for casual sitting and chatting. Plant pots run centrally along the benches to add colour to the environment.



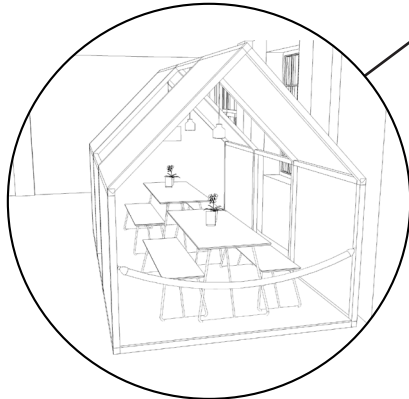
UCC area is a private area with seating and pendant lighting suspended within the area.



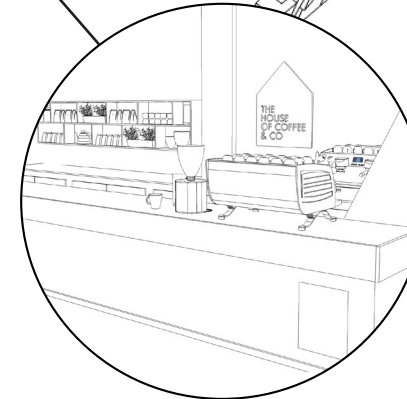
Central seating area for guests to relax. It makes use of coffee tables, sofas and festoon lighting to differentiate the area.



Hotel Chocolat has a large counter top to serve customers with a shelving unit behind to display items.



Private UCC area for guests to discuss services.



Large bar area to serve visitors. New Birch Ply counter top has a Scandinavian style this compliments the shelving unit mounted behind the bar.