

HORTUS CONCLUSUS

As intended to create a new standard for building in Dubai, the house has been designed to be both terraced and stand alone.

The house is surrounded by a wall fence on each of four sides of the plot and hasn't any direct view on the Main Street. This "introversion" is focused on giving the maximum privacy to the residents and to make it cosy, welcoming and safe as well.

Actually the house mainly develops on the inside: the living room, two bedrooms and the office are facing the inner garden and also remaining rooms (majlis, other bedrooms, kitchen etc.) overlook private courts.

In order to respond to the climatic conditions, a particular attention has been paid to building criteria and materials.

As to that, no surface of the building is exposed to direct solar radiation: roofs are covered by floating floors, sun screens or photovoltaic panels, on blank walls we can find a ventilated façade with WPC cladding and glazed surfaces are shielded by sun screens.

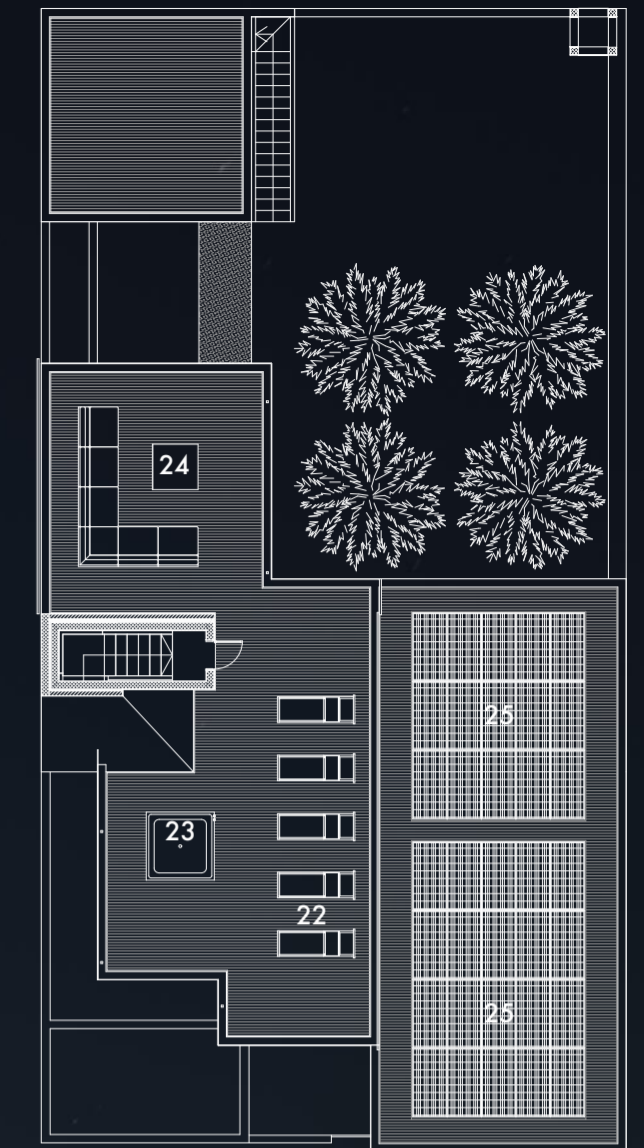
The WPC (Wood Plastic Composite) has been chosen for its low specific heat capacity (to prevent overheating), sustainability, durability and low maintenance request. On the contrary, inside the building we can find materials with high specific heat capacity (ceramic, concrete) to preserve cool. Moreover, exterior walls have a heavy mass composition (concrete structure, graphite insulation and brick counter-wall) to promote thermal phase shift.



Ground floor



First floor



Terrace

1. Entrance patio - 2. Driver room - 3. Garage - 4. Entrance - 5. Majlis - 6. Jasmine garden - 7. Living room and dining area - 8. Pantry - 9. Maid room - 10. Technical room - 11. Courtyard - 12. Laundry and ironing room - 13. Kitchen - 14. Storage - 15. Garden - 16. Pergola - 17. Breakfast area - 18. Master bedroom - 19. Dressing room - 20. Office - 21. Bedroom - 22. Solarium - 23. Jacuzzi - 24. Outdoor lounge - 25. Photovoltaic panels

0 1 5 10m

