

RUTA DEL PEREGRINO HHF LOOKOUT POINT

JALISCO/ MEXICO 2008–2010



PROJECT HHF

PROGRAM Lookout Point

LOCATION Espinazo del Diablo, Jalisco, Mexico

CONSTRUCTION 2008–2010

TEAM HERLACH HARTMANN FROMMENWILER

with Alexa den Hartog, Janna Jessen

PHOTOS Iwan Baan

AWARD Wallpaper* Design Award 2012

EXHIBITION 13th Architecture Biennale, Venice, Italy

La Ruta del Peregrino (Pilgrim's Route) stretches out on a distance of 117 kilometers. Approximately two million people participate each year in this religious phenomenon coming from different states of México to walk through the mountain range of Jalisco, starting in the town of Ameca, ascending to el Cerro del Obispo at an altitude of 2000 meters above sea level, crossing the peak of Espinazo del Diablo to descend to its final destination in the town of Talpa de Allende to meet with the Virgin of Talpa as an act of devotion, faith and gratitude.

This religious voyage has taken place since the 17th century, for the pilgrims the act of faith is carried to a penitence, the conditions of the route are harsh. This sacrifice carried with austerity is an essential part of the promise or offering that become the ritual of purification.

This project aims to provide the historical route with better conditions for the pilgrims as well as to maximize the social and economical profit for this area by taking advantage of this massive event. Based on a systematic vision the project becomes a sustainable site with different layers of meaning. As we focus on the whole, the master plan consists of an ecological corridor with infrastructure and iconic architectural pieces that add to the religious ritual and also aim to appeal to a broader audience and allow the Route to have a flow of visitor beyond the religious.

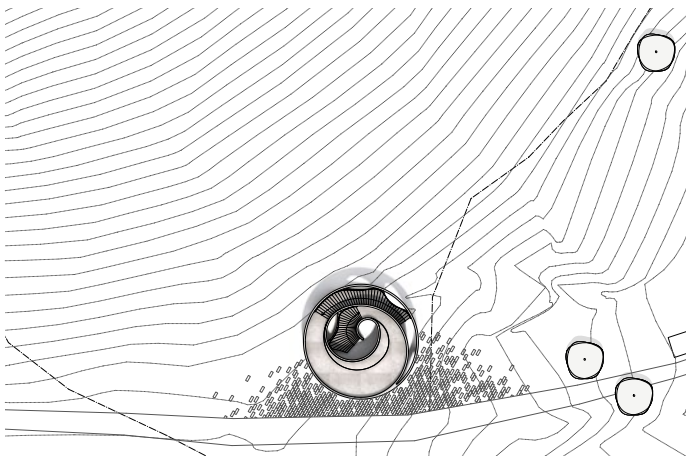
The focus is on the iconic narrative given to the Route with 7 pieces that strongly relate both to the extraordinary landscape and to the religious ritual, becoming the imaginary landmarks of a deeply rutted phenomenon. Each landmark by a different designer, a group of individual dialogues with specific sites and intentions that add up, to weave a single story.

HHF LOOKOUT POINT

The HHF Lookout Point is designed to be an additional loop in the pilgrimage's path. Its round shape was developed as a formal anticipation of the peoples movement through the platform, going up to enjoy the great outlook in the surrounding countryside. The asymmetric arched openings provide access to an open hall, which is covered by the platform above. The inner walls are a shifted repetition of the primary facade in four tangential circles, between which the two

staircases define a route up to the platform and back down.

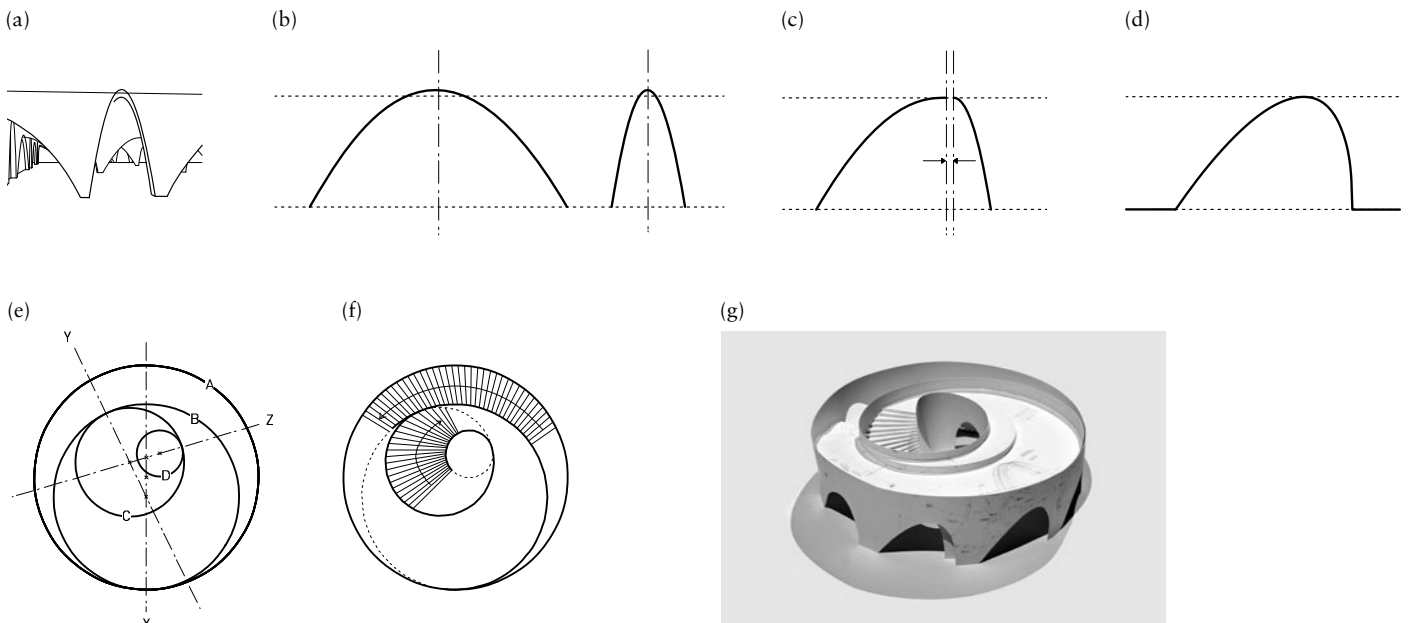
The Lookout Point is, with exception of the black metal handrail and the brick wall with the cross, entirely built out of cast concrete. To simplify the rather complex basic geometry and to facilitate its construction, each arc is formed by an identical element of formwork. This frame can be reused as the circles are erected one after another.



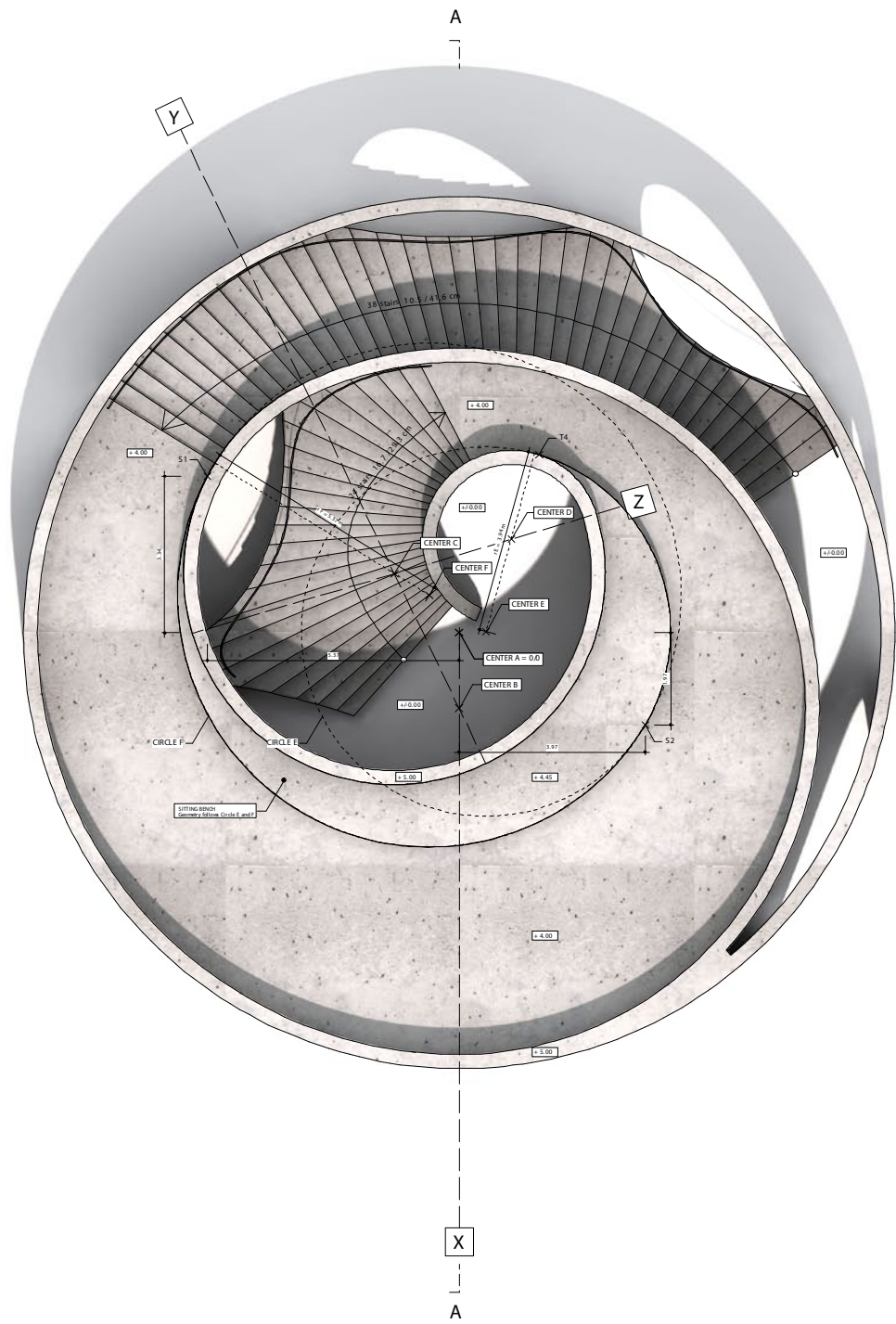
Site Plan 



Landscape view over Jalisco



(a) We became interested in how the curves used in Labels 2 change when viewed from different perspectives. (b) We experimented with the two sine curves from Labels 2. In the final form for Ruta they are cut down the central axis. (c) And then put back together to form a new curve. (d) This new curve becomes the form for the arches in Ruta. (e) The largest circle A is drawn first. The midpoint of the next circle B must fall on the central axis of X. In addition B is also on a tangent to A. The next biggest circle, C, is drawn at a tangent to, and on the central axis of Y. The smallest circle, D, is drawn using the same geometrical rules, but this time in relation to C. (f) The staircases define a route between the four tangential circles. (g) Paper model.



Top View



HHF Lookout Point – Espinazo de Diablo

RUTA DEL PEREGRINO

TITLE OF WHOLE PROJECT: Ruta del Peregrino (Route of Pilgrim)

CLIENT: Secretaría de Turismo de Jalisco, Mexico

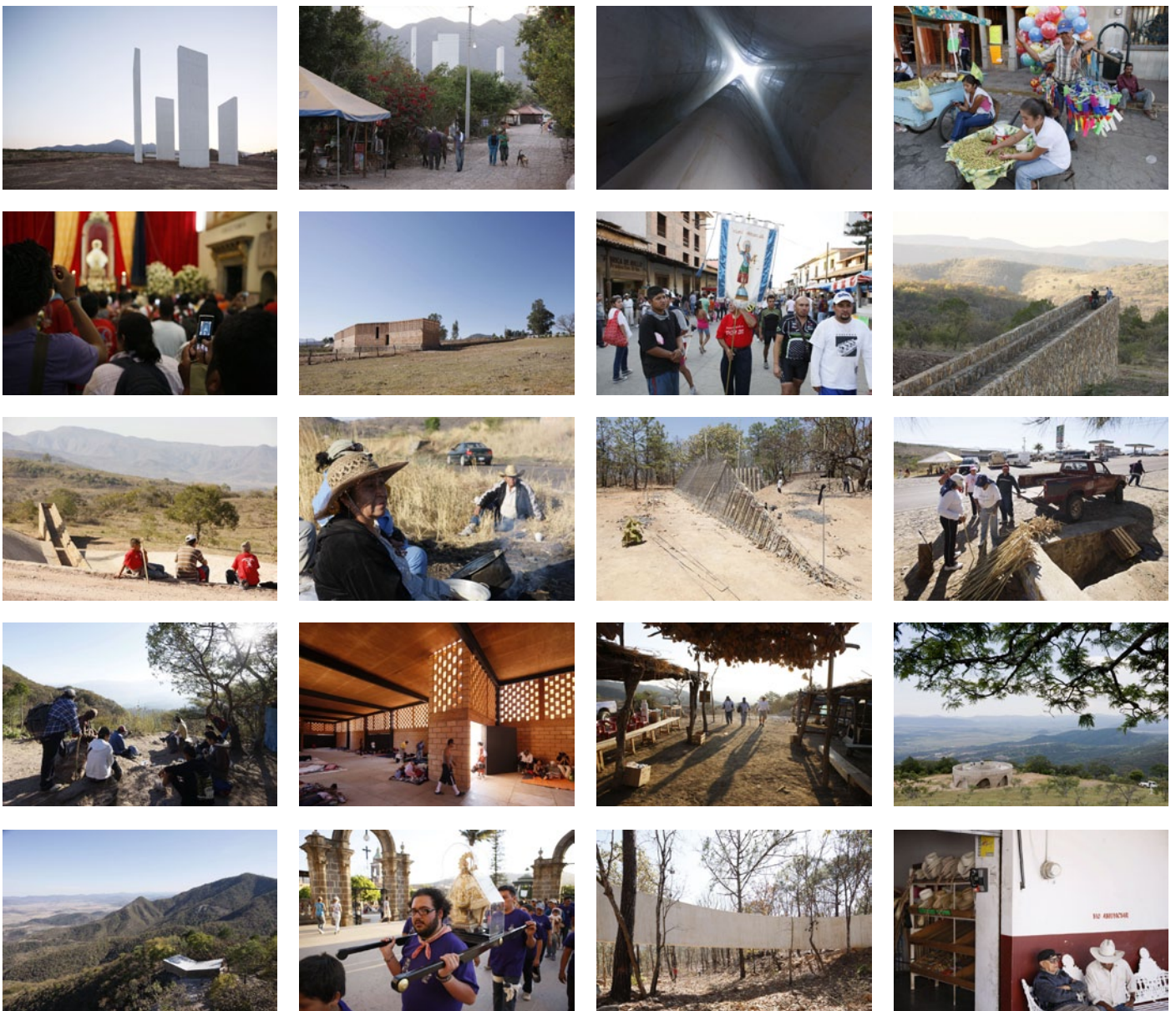
LOCATION: From Ameca to Talpa de Allende, Jalisco, Mexico

CURATORIAL TEAM: Tatiana Bilbao and Derek Dellekamp

MASTERPLAN AND PROJECT COORDINATION: Rozana Montiel and Derek Dellekamp

ENVIRONMENTAL STRATEGY: T.O.A. | Taller de Operaciones Ambientales

INVITED ARCHITECTS AND DESIGNERS: Ai Weiwei / Fake Design (China), Luis Aldrete (Mexico), Tatiana Bilbao (Mexico), Christ & Gantenbein (Switzerland), Dellekamp Arquitectos (Mexico), Elemental (Chile), Godoylab (Mexico), HHF (Switzerland), Periférica (Mexico), Taller TOA (Mexico)



1	2	3	4
5	6	7	8
8	10	11	12
13	14	15	16
17	18	19	20

1, 2. Lagunillas Gratitude Open Chapel – Bilbao + Dellekamp 3. Cerro del Obispo Viewpoint – Christ & Gantenbein 6. Estanzuela Shelter– Luis Aldrete 8, 9. Estanzuela Sanctuary – Ai Weiwei Fake Design 11. Mixtlán Sanctuary – Tatiana Bilbao 13. Atenguillo Shelter – Luis Aldrete 15. Espinazo de Diablo Lookout Point – HHF 17. Las Cruces Lookout Point – Elemental 19. Concinas Void Temple – Dellekamp + Periférica 4, 7, 10, 12, 14, 16, 18, 20. Pilgrims in Ruta del Peregrino