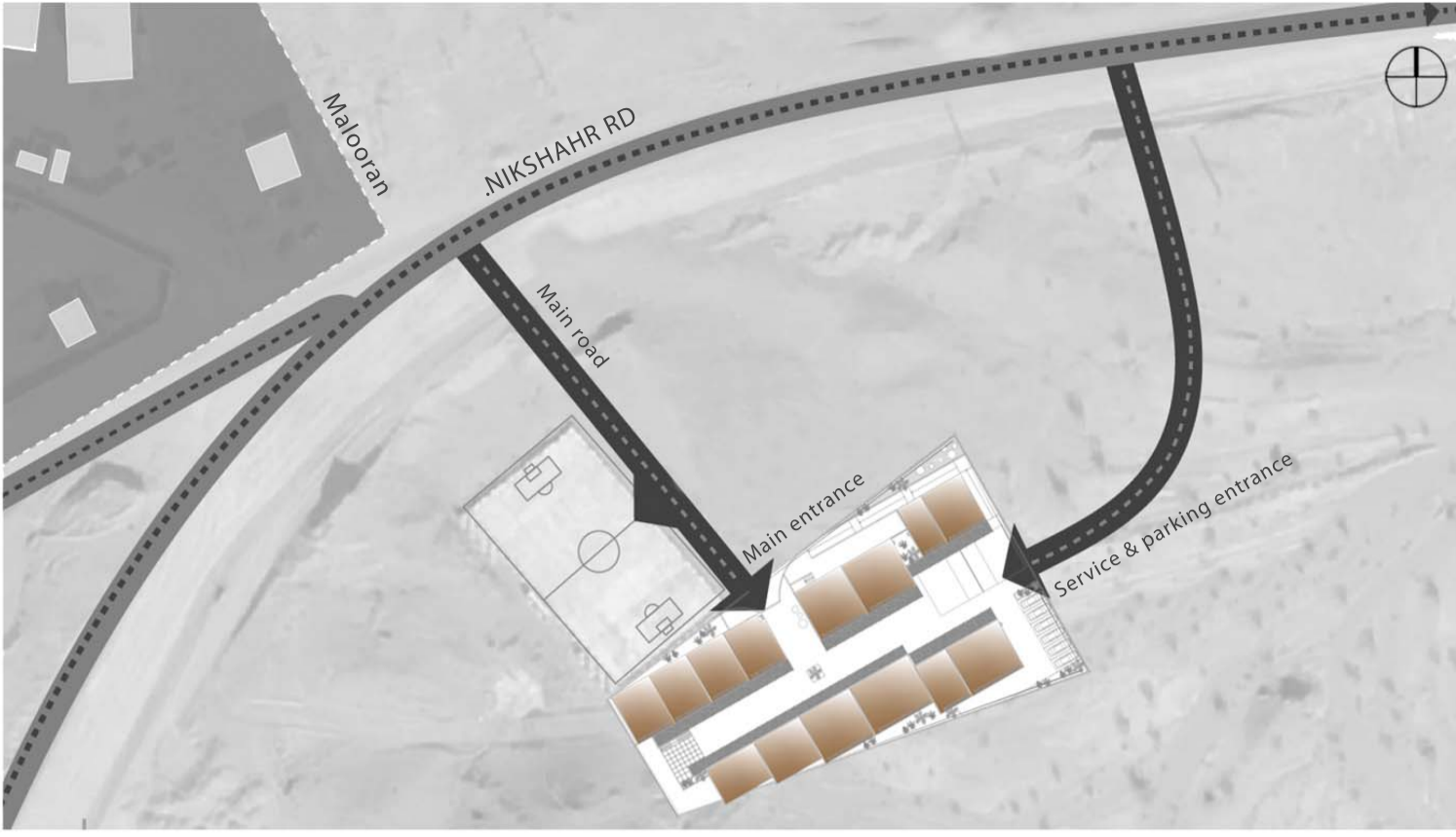
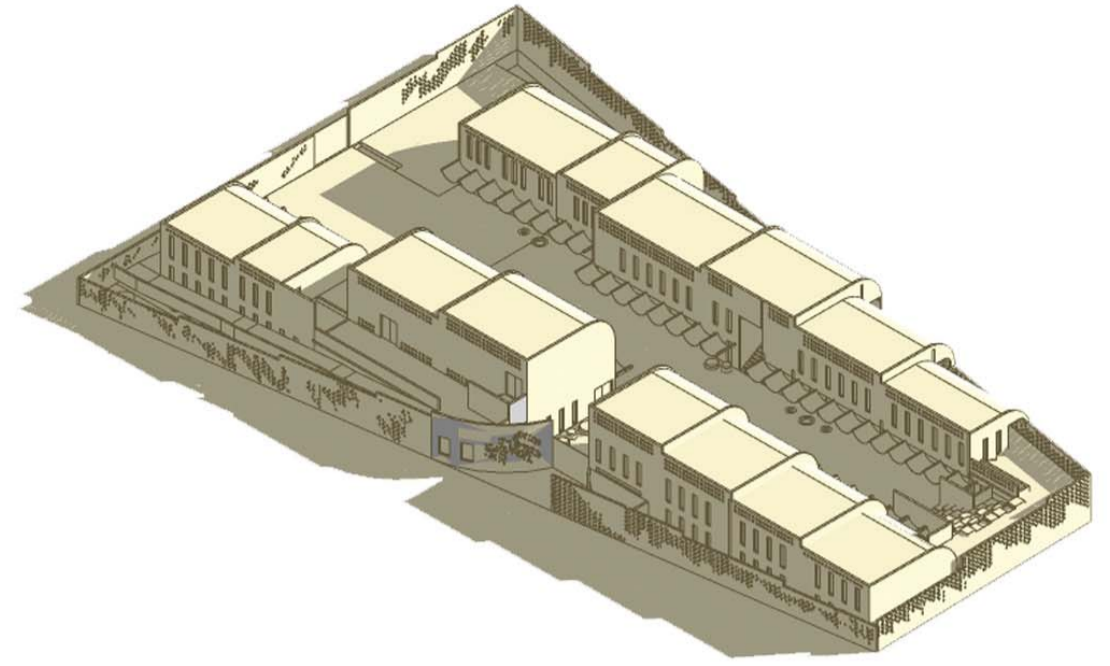


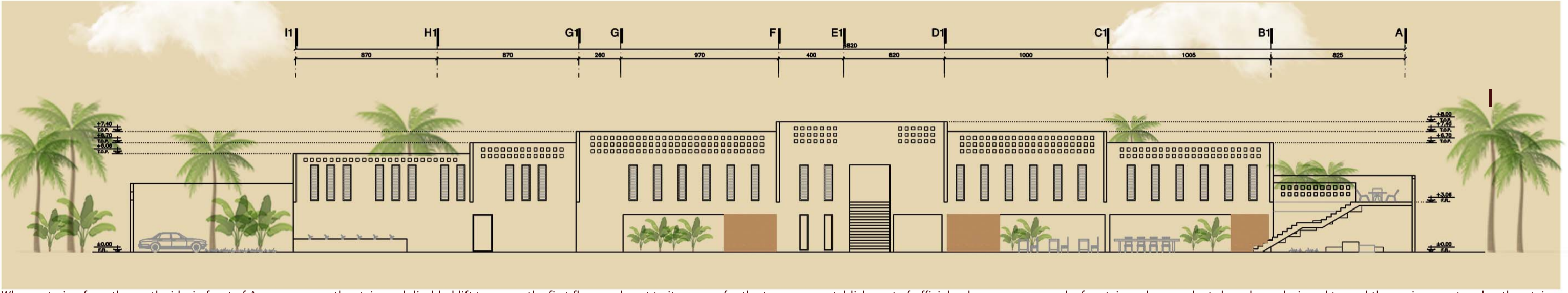
The project is designed in two floors. The main entrance is considered to be on the north side of the land and the service entrance and parking lot is on the east side of this matter Prevents the functionality of spaces. The first floor includes educational, service and utility use and parking, and the second floor, in addition to education, includes cultural spaces and It is also administrative



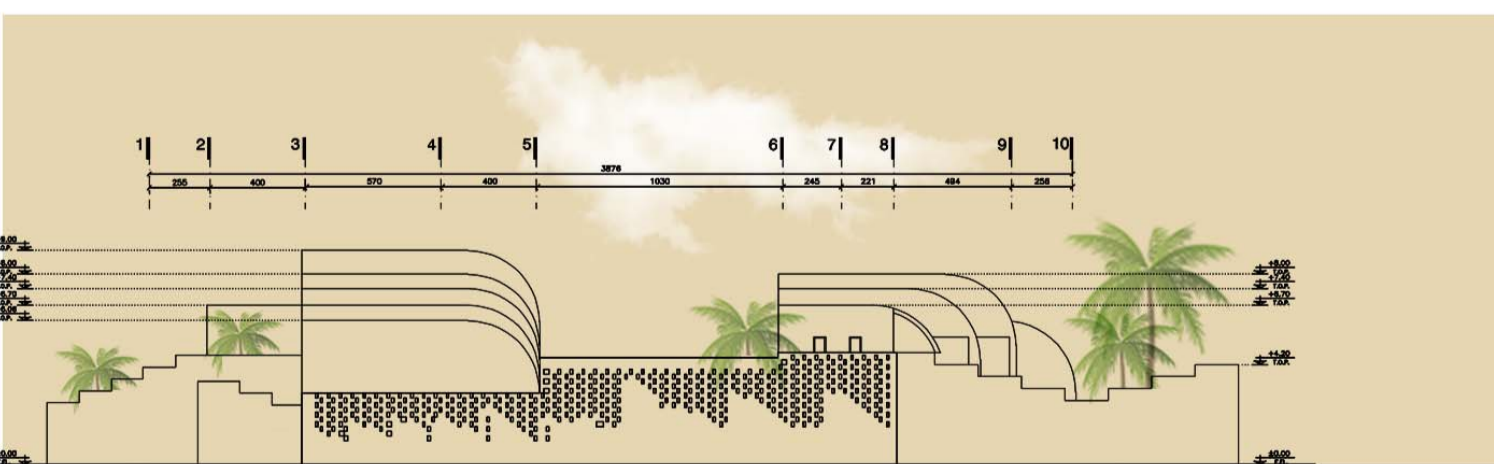
Site plan | scale 1:500



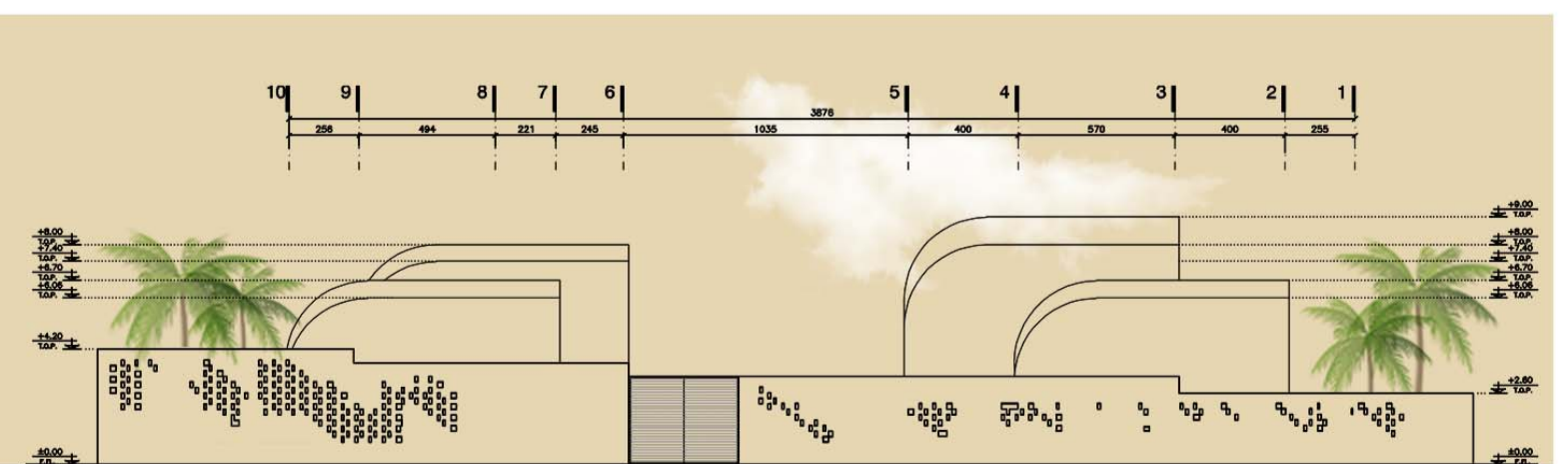
Interior Facade to south blocks | scale 1: 200



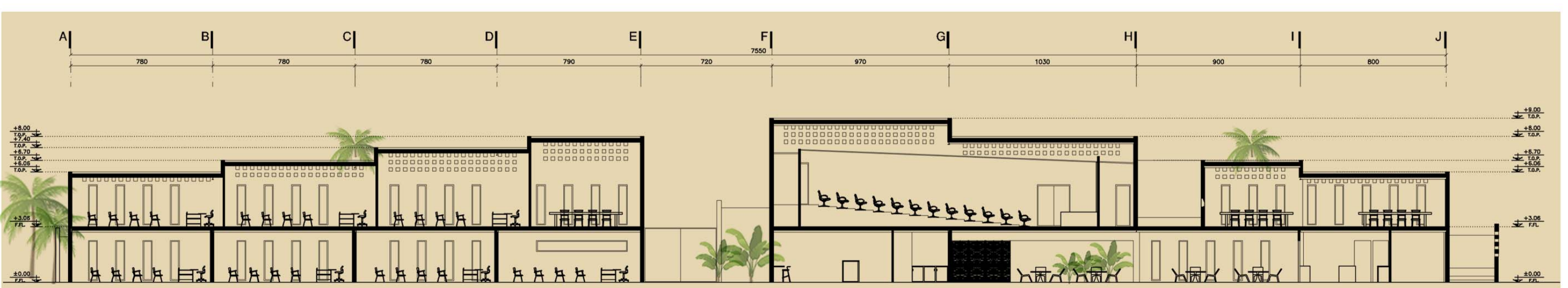
When entering from the north side, in front of Ax, you can see the stairs and disabled lift to access the first floor, and next to it, a space for the temporary establishment of officials when necessary, and a fountain and many plants have been designed to cool the environment under the stairs. The space of the prayer room and workshops is separated from the courtyard with movable partitions made of bamboo, which makes it flexible. It has become space. The most important factor in a hot and dry climate is the creation of shading spaces. This has been created in the yard by installing a tent canopy. Also, in order to increase the flexibility of the space and expand the open space, the prayer room, workshop and restaurant on the ground floor are separated from the surrounding environment with bamboo partitions. This matter It creates a space as a covered courtyard in very hot seasons (pilot and shade) for gathering and group activities



West elevation | scale : 1:400



east elevation | scale : 1:400



Section A-A | scale : 1:400