

La Providence High school

Saint-Malo – France

ALTA

ARCHITECTES | URBANISTES

Press kit

June 2022



Press kit
June 2022

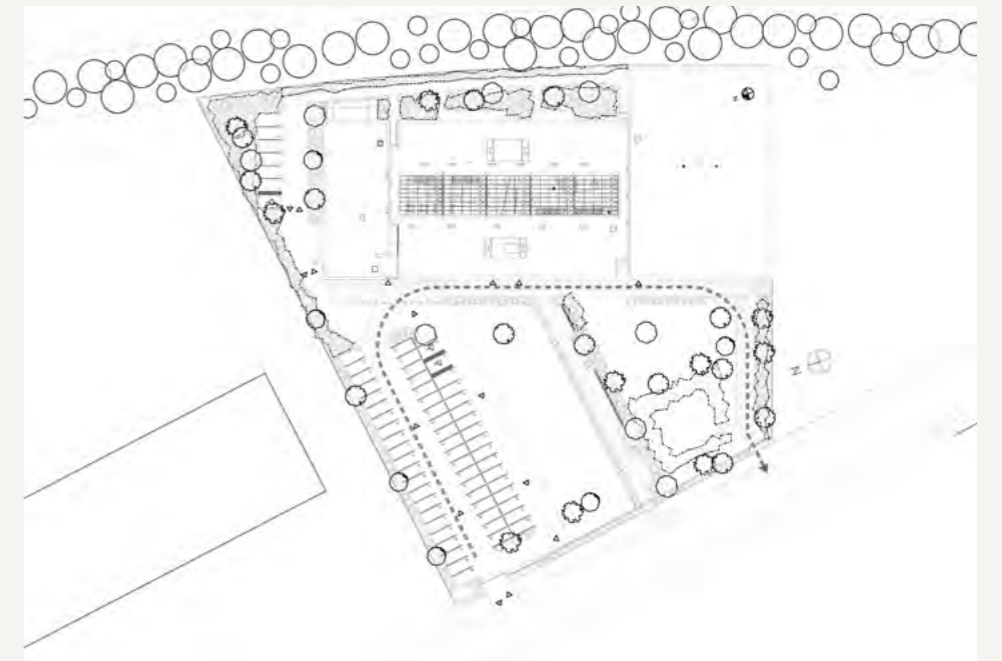


La Providence High school

Saint-Malo – France

ALTA

ARCHITECTES | URBANISTES



Floor plan

Technical Sheet

Place : Saint-Malo (France)
Client : L'Institution La Providence
Architects : ALTA Le Trionnaire - Le Chapelain
project manager Mathias Robert
Delivery : 2022
Mission accomplished : Complete mission
Surface : 5 600 m² (Floor Area)
Program : High school with 500 students, 19 classes + workshops + cafeteria + school library + auditorium + gymnasium
Performance : Eco-referential for high schools Brittany region

The project





La Providence

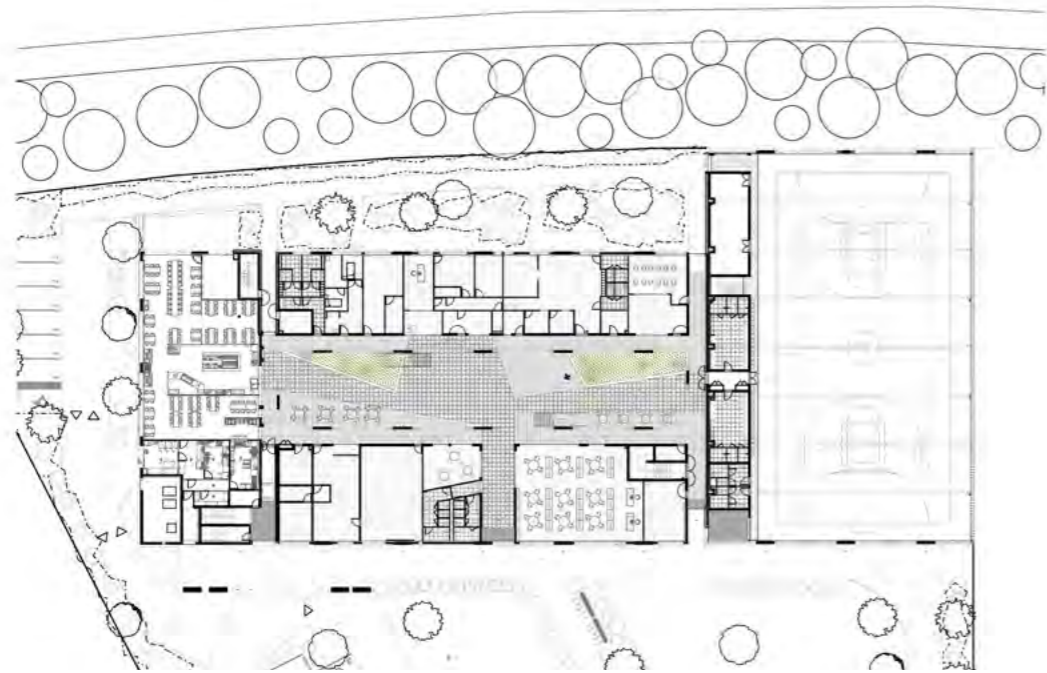


The project, located on rue de La Croix Desille, is an educational establishment divided into 3 entities: a post-baccalaureate establishment with 6 classes for 150 students and a cafeteria on the ground floor; a high school with 10 classes and technical and administrative facilities for 350 students; and a sports hall.

These three entities distributed in R+2 form a single building gravitating around an atrium covered with a glass roof. This central space is a reference to the glass-covered foyer of the «mother house», the Institution in Intramuros, a real meeting place, a place of conviviality, where everything happens.

La Providence high school





Ground floor



+1



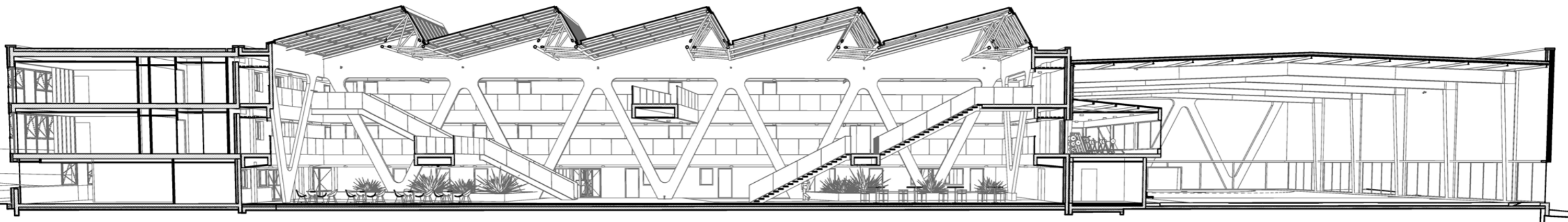
+2

Malo Identity

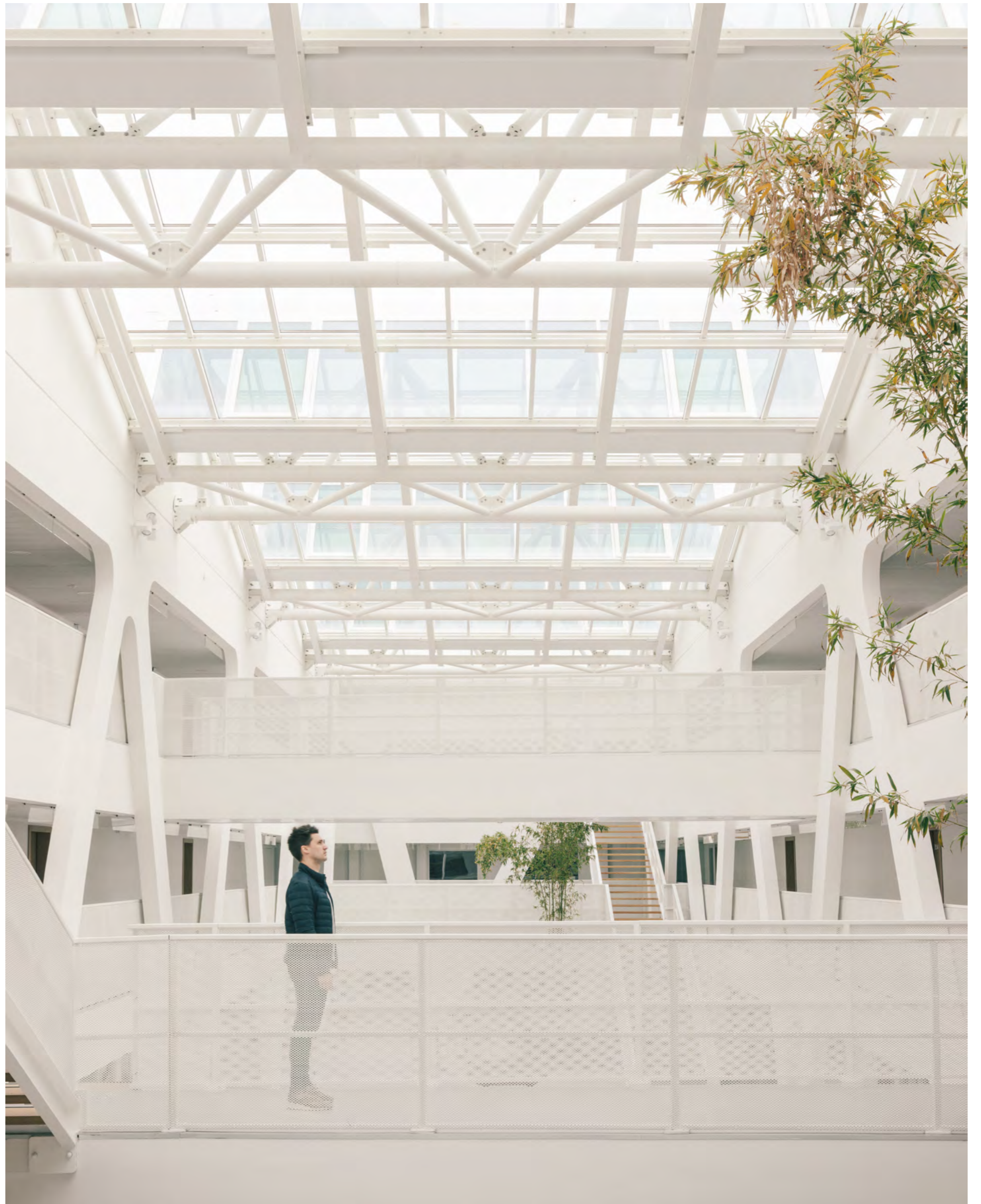




The project is part of an iconic writing of Malo identity: as it is a partially «professional» high school dedicated to construction techniques, two architectural elements are highlighted: two large beams that carry all the floors and facades of the equipment. The W-shaped structure reproduces the image of port cranes; the shed glass roof is in keeping with the architectural identity of the buildings that can be seen around the port of Saint-Malo.



The Atrium





B03

ACCUEIL
SECRETAR



The atrium distributes the entire program from the corridors and walkways. It acts as a buffer space, allowing the regulation of the climatic atmosphere of the building (solar contribution in winter, cooling and natural ventilation in summer). The CDI, the administration, the school life premises, the sports room and the cafeteria are grouped together on the ground floor; the two floors bring together the classrooms and the different areas/workshops linked to the vocational baccalaureate specializations.



The Gymnasium

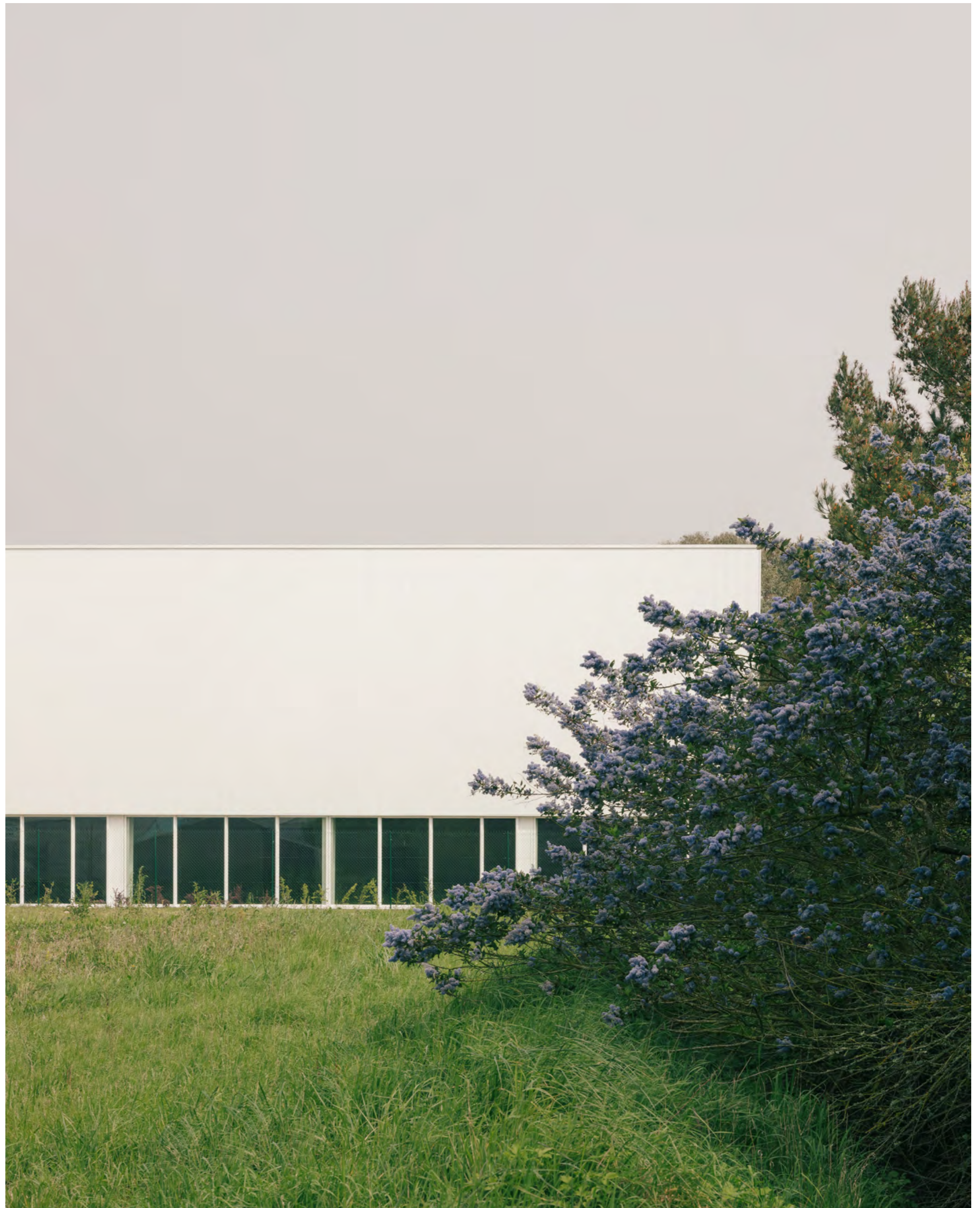






The gymnasium, a space dedicated to the high school and the agglomeration, hosts on the first floor multi-sports (basketball, handball, volleyball, badminton ...) and upstairs a weight room and a climbing wall. The architecture continues the W-shaped structural motif, allowing the built volume to be suspended and freeing up a total transparency of the sports field towards the outside.

Natural Landscape





La Providence





The project takes advantage of the presence of existing trees of various species that border the avenue, not as a dimensional constraint but as a revelation of the landscape identity that allows a balanced dialogue between the project and the future development of the «campus» district.

School Spaces







Architects

ALTA
22 avenue Henri Fréville
35203 Rennes
T : +33 2 99 26 33 26

contact@a-lta.fr
www.a-lta.fr



Press contact

Fatma Erhalac Consulting
18 rue de la Forge Royale
75011 Paris
T : +33 9 51 31 41 31
M : +33 6 01 48 26 24
contact@fatmaerhalac.com
www.fatmaerhalac.com



Plans : © ALTA

Photographs : © Charly Broyez

Graphic design : © FE Consulting

La Providence